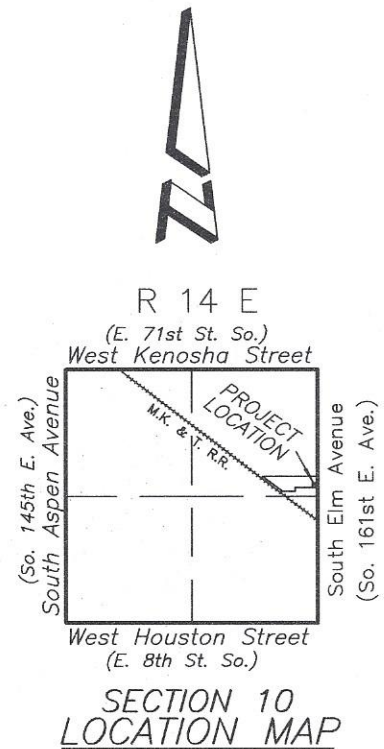
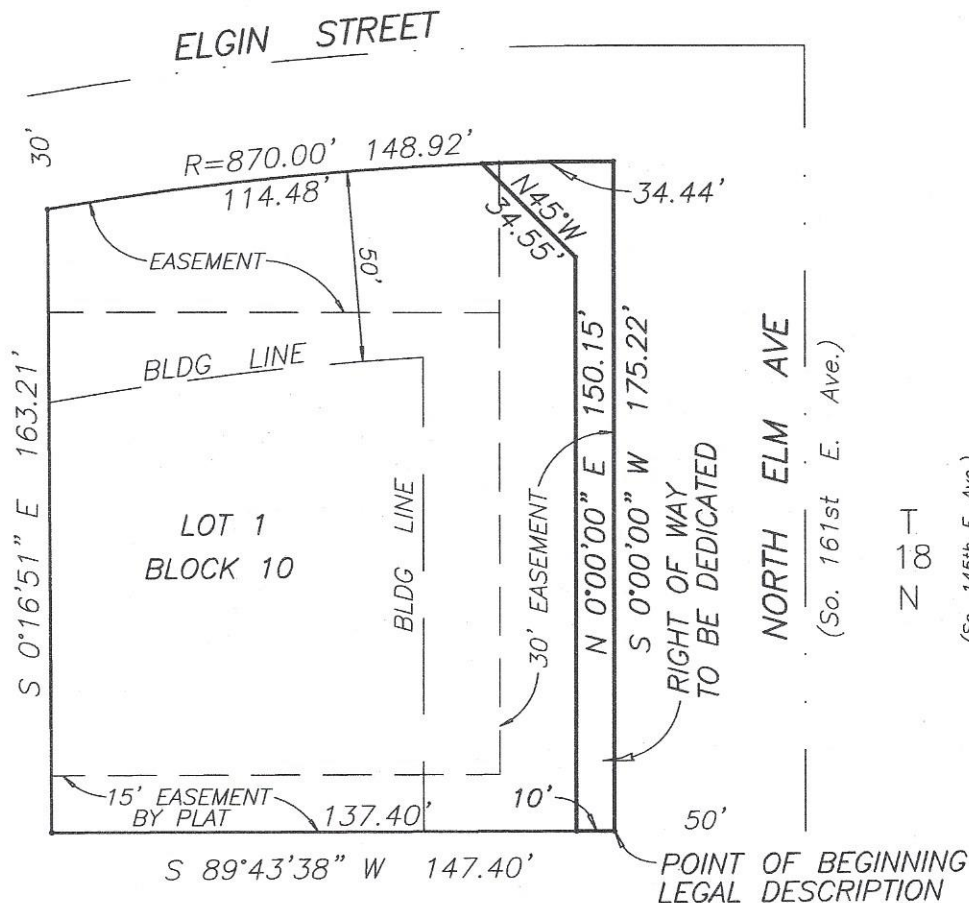


GRAHAM-FRANKLIN INDUSTRIAL PARK IV

BOOK 4256, PAGE 2246

EXHIBIT B



RIGHT OF WAY DEDICATION

LEGAL DESCRIPTION:

A PART OF LOT ONE (1), BLOCK TEN (10), GRAHAM-FRANKLIN INDUSTRIAL PARK IV, AN ADDITION TO THE CITY OF BROKEN ARROW, TULSA COUNTY, STATE OF OKLAHOMA, ACCORDING TO THE RECORDED PLAT THEREOF, BEING MORE PARTICULARLY DESCRIBED AS FOLLOWS, TO-WIT:

BEGINNING AT THE SOUTHEAST CORNER OF LOT 1, BLOCK 10, GRAHAM-FRANKLIN INDUSTRIAL PARK IV; THENCE S 89°43'38" W AND ALONG THE SOUTH LINE OF SAID LOT 1, A DISTANCE OF 10.00 FEET; THENCE N 0°00'00" E AND PARALLEL WITH THE EAST LINE OF SAID LOT 1, A DISTANCE OF 150.15 FEET; THENCE N 45°00'00" W A DISTANCE OF 34.55 FEET TO A POINT ON THE NORTH LINE OF SAID LOT 1; THENCE ALONG A CURVE TO THE RIGHT, HAVING A RADIUS OF 870.00 FEET, A CURVE LENGTH OF 34.44 FEET, WITH A CHORD BEARING OF N 88°51'57" E, AND A CHORD DISTANCE OF 34.44 FEET TO THE NORTHEAST CORNER OF SAID LOT 1; THENCE S 0°00'00" W AND ALONG THE EAST LINE OF SAID LOT 1, A DISTANCE OF 175.22 FEET TO THE SOUTHEAST CORNER OF SAID LOT 1 AND THE POINT OF BEGINNING.