

Conceptual Utilities Plan
Planned Unit Development 289

Harvest Center

A subdivision in the City of Broken Arrow, being a part of the
W/2 of the NE/4 of Section 8, Township 18 North, Range 15 East
of the Indian Meridian, Tulsa County, State of Oklahoma

ENGINEER / SURVEYOR

Tulsa Engineering & Planning Associates, Inc.

an Oklahoma corporation
9820 East 41st Street, Suite 102
Tulsa, Oklahoma 74146
918.252.9621

CERTIFICATE OF AUTHORIZATION NO. 531
RENEWAL DATE: JUNE 30, 2019

OWNER / DEVELOPER

Harvest Property Investments, L.L.C.

an Oklahoma Limited Liability Company

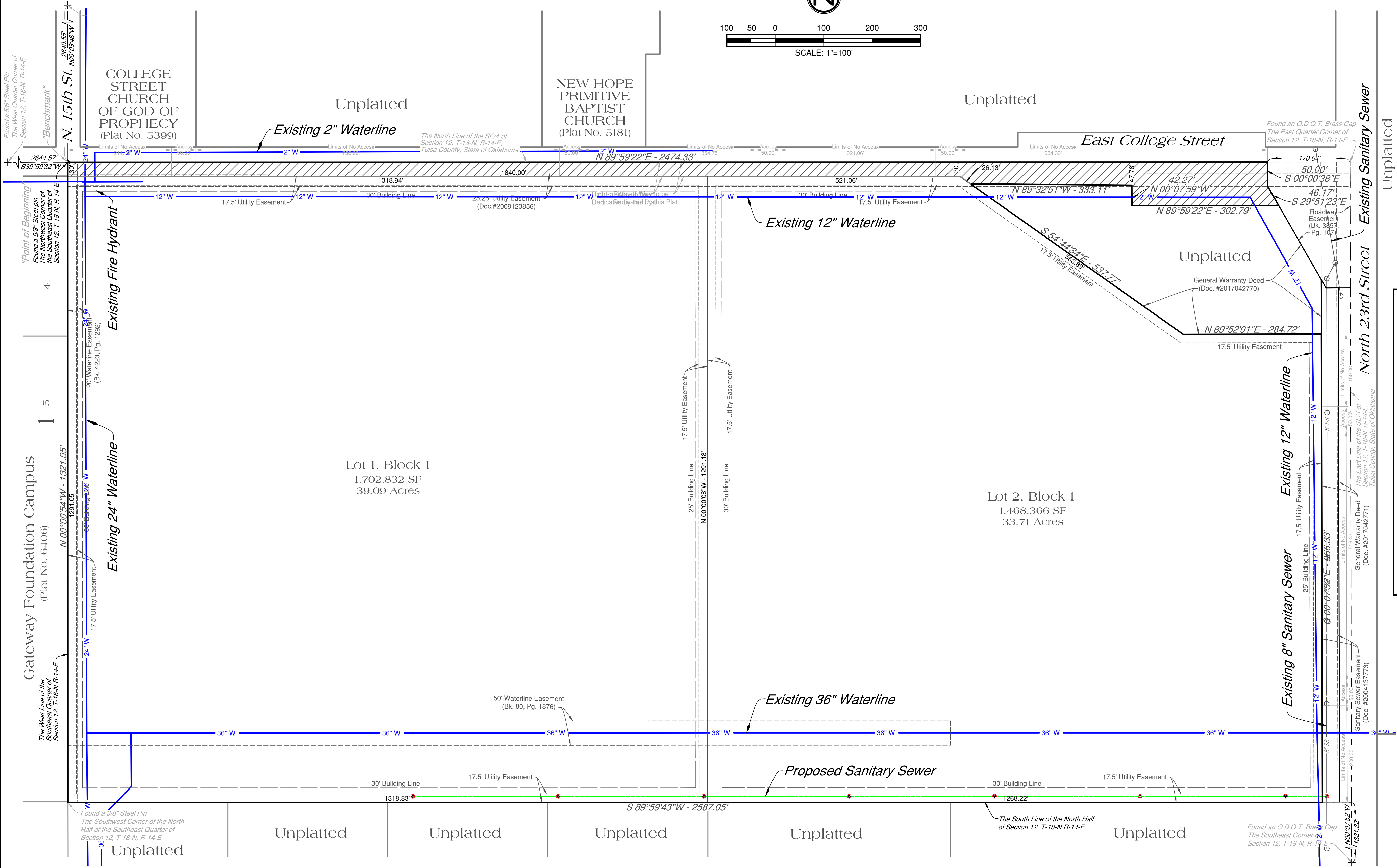
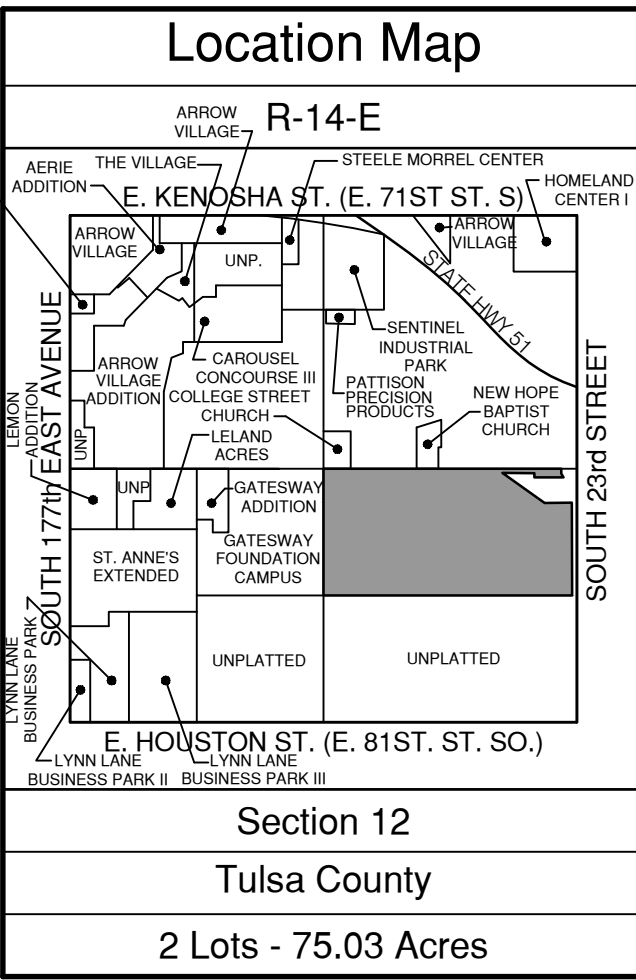
and

Margaret Scraper Trust

2727 East 21st Street, Suite 200
Tulsa, OK 74114-3533
918.747.8900



100 50 0 100 200 300
SCALE: 1"=100'



Legend

	ROW Dedicated by this Plat	Bk. = Book
	PLC = Plat Cabinet	Pg. = Page

Monument Notes

A 5/8" x 18" deformed bar with a yellow plastic cap stamped "TEP CA531" to be set at all plat boundary corners, prior to recordation unless noted otherwise.

A 3/8" x 18" deformed bar with a yellow plastic cap stamped "TEP CA531" to be set at all lot corners after completion of improvements, unless noted otherwise.

Basis of Bearings

The Non-Astronomic Bearings for Said Tract Are Based on an Assumed Bearing of N00°00'54"W Along the East Line of "Gateway Foundation Campus", Subdivision in the City of Broken Arrow, Tulsa County, State of Oklahoma, According to Official Recorded Plat Thereof, Plat No. 6406, as Filed in the Records of the Tulsa County Clerk.

Benchmark

A 5/8" Steel Pin Found at the Northwest Corner of the Southeast Quarter of Section 12, T-18-N, R-14-E, Tulsa County, State of Oklahoma

Elevation = 752.14 NAVD88

Stormwater Detention

Stormwater detention accommodations for this plat are provided in accordance with Fee-In-Lieu of Detention Determination No. DD-021219-06. Stormwater detention for this plat will be provided on the site.

APPROVED _____ by the City Council
of the City of Broken Arrow, Oklahoma

Mayor

Attest: City Clerk