

5. Does the sponsor have control of the ROW for the project? If so, has the ROW been acquired in accord with the Federal Uniform Relocation Assistance and Acquisition Policies Act?

The City has all needed right of way for the "share the road" on street bikeway and pedestrian improvements. The City has also received a letter from the Broken Arrow Independent School District No. 3 indicating that "The School District will provide the required rights-of-way or easements where the trails cross school properties", which will provide the needed ROW to meet Federal requirements. The trail ROW north of 101st Street to East Ithica Place is all within the City's current ROW.

6. Describe the proposed ownership and maintenance responsibilities for the project once it is completed.

The project will be maintained by the City of Broken Arrow Parks and Recreation Department. They will provide the right-of-way (mowing, cleanup, fencing, etc.) and they will budget funding for all of the other needed maintenance. The Streets and Stormwater Department will maintain the roadway (pavement repairs, striping, signage) with Parks and Recreation making the maintenance requests to them for those repairs on the bikeway and the trail.

7. Use this space to provide any additional details that relate to the rating criteria that were not addressed in the questions above.

Broken Arrow has received support of this trail/bikeway corridor from the Broken Arrow School District and has offered to convey needed right of way for construction. In addition, the City has received support from a local developer within the corridor for future trail and park development by Broken Arrow as shown below.

From: Dave [<mailto:dave@paradigmtulsa.com>]
Sent: Friday, April 19, 2013 9:41 AM
To: Daroga, Farhad
Cc: 'Eric Anderson'
Subject: Broken Arrow Trails

Farhad,

As you know we have been working with Broken Arrow Parks as we expand Washington Lane from its current 100 acres. There is an additional 300 acres we own adjacent to the original development. Eighty of these acres are across Lynn Lane and 200 are across Washington Street. It has always been hoped that this central community of nearly 400 acres when built out would be linked in with Broken Arrow's trail system. One of the natural connection points would be along Broken Arrow creek that parallels Lynn Lane and runs along the western border of our 80 acre property line. We have had early discussions with Parks to determine what portions of this property would be suitable for the City to use for these purposes. We believe that working together we could donate this land for such a purpose and with Parks efforts it could become a treasured amenity for not only our 400 acre community but for the citizens of Broken Arrow in general.

Please keep us informed of any initiatives in this regard. You will find us willing participants.

Sincerely,

Dave Cocolin



LANDPLAN CONSULTANTS INCORPORATED
 1110 West 23rd
 Tulsa, OK 74107
 (918) 584-6464

Seal:

**BROKEN ARROW CREEK TRAIL
 LAYOUT PLAN (3)**

Revisions:

North

Design		
Drawn		
Checked		
Approved		



Sheet: **3** of 3





LANDPLAN CONSULTANTS INCORPORATED

1110 West 23rd
Tulsa, OK 74107
(918) 584-6464

Sect:

BROKEN ARROW CREEK TRAIL
CONCEPTUAL LAYOUT PLAN (1)

Revisions:

North



Design

Drawn

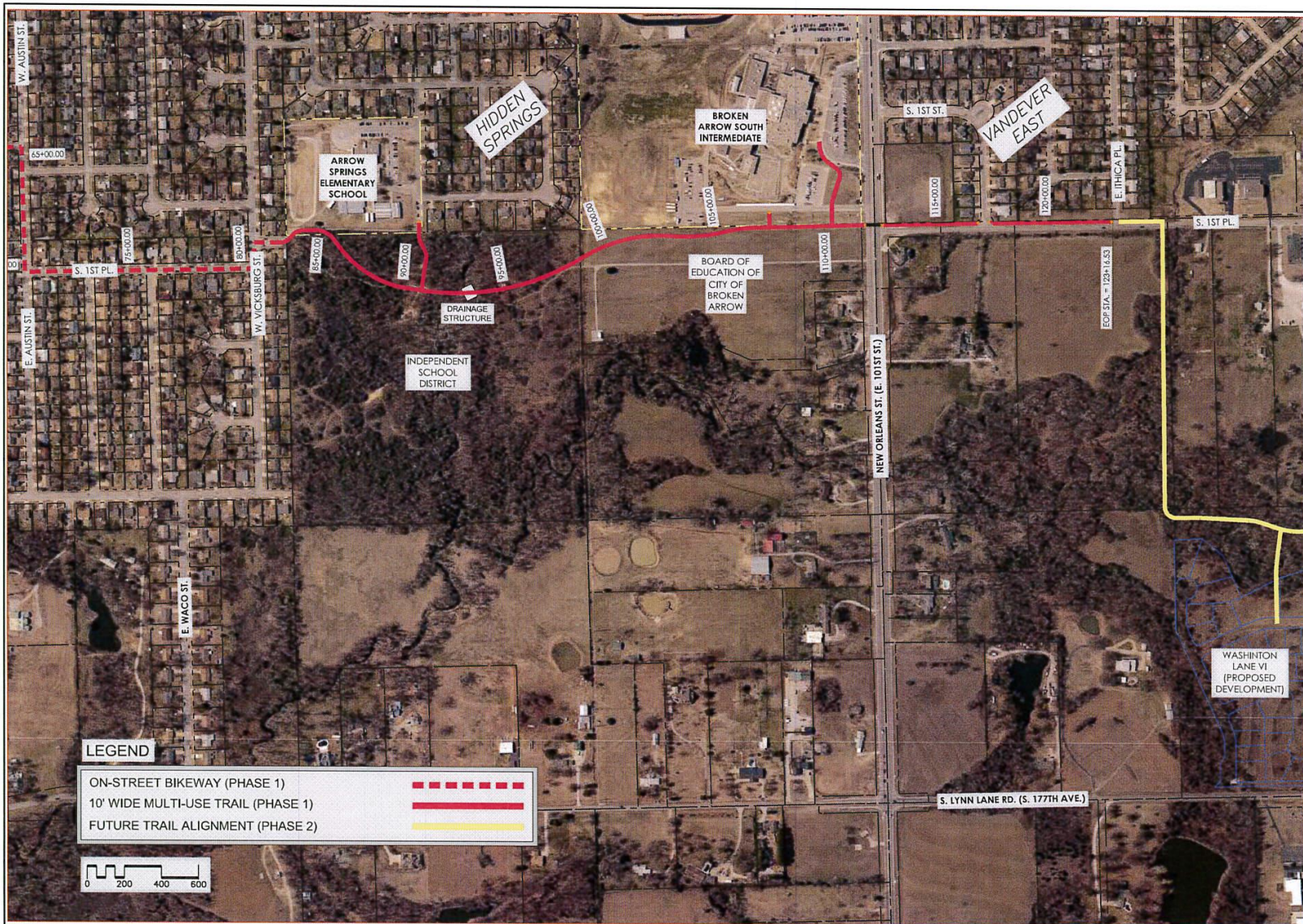
Checked

Approved



BEFORE YOU DO, USE-IT-OUT, CALL OUR

Sheet: 1 of 3





LANDPLAN
CONSULTANTS
INCORPORATED

1110 West 23rd
Tulsa, OK 74107
(918) 584-6464

Seal:

BROKEN ARROW CREEK TRAIL
CONCEPTUAL LAYOUT PLAN (2)

Revisions:

North



Design	Drawn	Checked	Approved



BEFORE
YOU DO
"ANY" WORK
CALL OKR

Sheet: 2 of 3