

Forest Hills Health Care Center

A part of the SE/4 of the SW/4 and a part of the SW/4 of the SE/4 of Section 8,
T-18-N, R-14-E, City of Broken Arrow, Tulsa County, State of Oklahoma, and
a Resubdivision of "The Gardens", an Addition to the City of Broken Arrow,
Tulsa County, State of Oklahoma

OWNERS/DEVELOPERS:
Forest Hills Health Care Centers, Inc.
an Oklahoma corporation

and

Autumn Nursing Centers, Inc.
an Oklahoma corporation

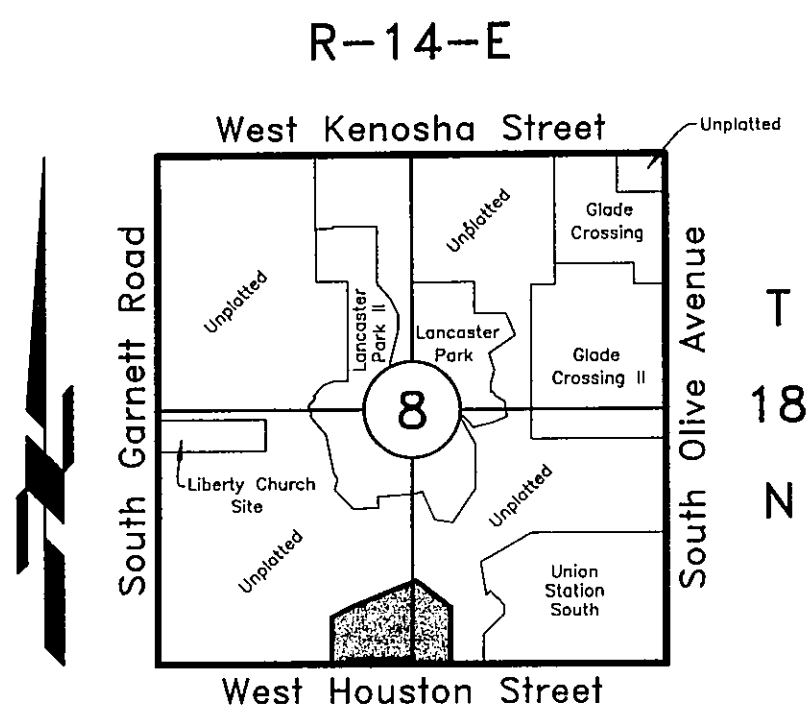
and

Daniel S. Buford
a single person

P.O. Box 3669
Tulsa, Oklahoma 74101
Phone: (918) 599-0033

ENGINEER:

Tulsa Engineering & Planning Associates, Inc.
an Oklahoma corporation
8209 East 63rd Place South
Tulsa, Oklahoma 74133
Phone: (918) 252-9621



TULSA COUNTY
LOCATION MAP

2 Lots - 18.4797 Acres

CERTIFICATE

I hereby certify that all real estate taxes involved in this plat have been paid as reflected by the current tax rolls. Security as required has been provided in the amount of \$ 5,346.00

per trust receipt no. 11969 to applied to 1997 taxes.

This certificate is NOT to be construed as payment of 1997

taxes in full but is given in order that this plat may be filed on record

19 97 taxes could exceed the amount of the security deposit.

Dated 7-31 19 97

Dennis Semler
Tulsa County Treasurer
by Heather McMillan
Deputy

STATE OF OKLAHOMA } SS.
COUNTY OF TULSA

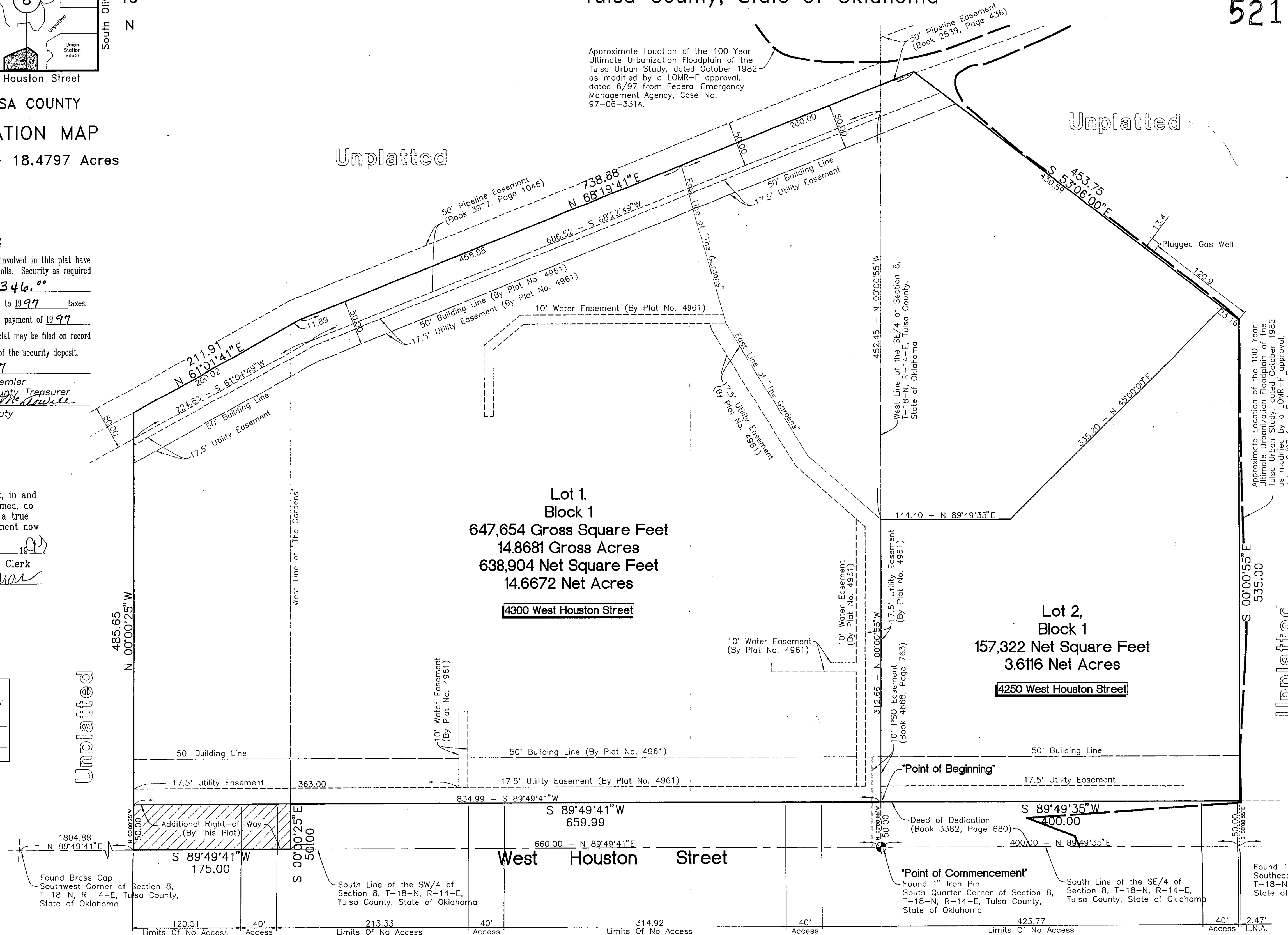
I, Joan Hastings, Tulsa County Clerk, in and for the County and State above named, do hereby certify that the foregoing is a true and correct copy of a like instrument now on file in my office.

Dated the 31 day of July 1997

JOAN HASTINGS, Tulsa County Clerk

by Heather McMillan
Deputy

APPROVED 7/1/97 by the City Council of the City of Broken Arrow, Oklahoma.
James C. Reynolds, Jr.
Mayor
Brenda Ray, Jr.
Attest: City Clerk

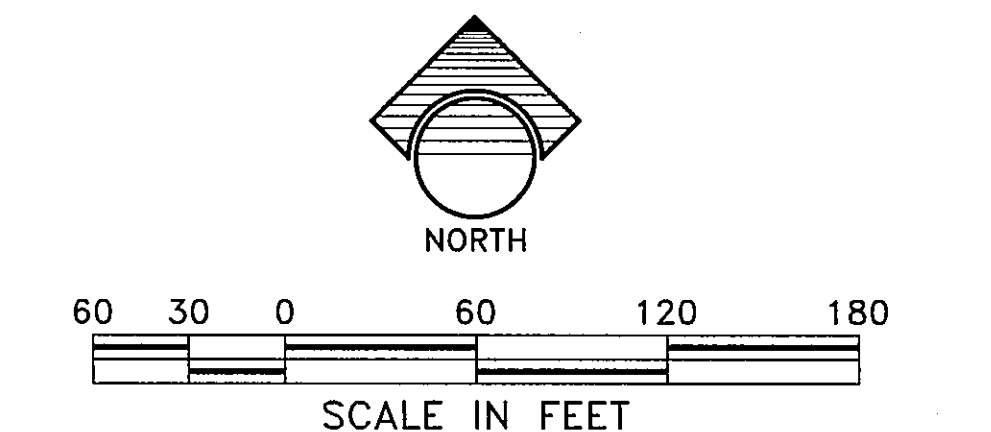


Benchmark ♦
1" Iron Pin located at the South Quarter Corner of Section 8, T-18-N, R-14-E, Tulsa County, State of Oklahoma.
ELEVATION = 664.25 N.G.V.D. 1929

Basis of Bearings
The non-astronomic for said tract are based on an assumed bearing of S 89°49'41"W along the south line of the SW/4 of Section 8, T-18-N, R-14-E, of the Indian Meridian, Tulsa County, State of Oklahoma, according to the Official U.S. Government Survey thereof.

Legend
L.N.A. = Limits of No Access
[Symbol] = Additional Right-of-Way by this plat

Monument Notes
A 5/8" x 18" deformed bar with a yellow plastic cap stamped "RLS 1253" to be set at all plot boundary corners, prior to recordation unless noted otherwise.
A 3/8" x 18" deformed bar with a yellow plastic cap stamped "RLS 1253" to be set at all lot corners after completion of improvements, unless noted otherwise.
A 3/8" x 18" deformed bar with a yellow plastic cap stamped "RLS 1253" to be set at all street centerline intersections, points of curve, points of tangent, points of compound curve, points of reverse curve, center of cul-de-sacs and center of eyebrows, after completion of improvements, unless noted otherwise.



Forest Hills Health Care Center
Sheet 1 of 2