

An ordinance amending Section 3.1.F (Table 3.1-1) Table of Allowed Uses; and Section 5.4 (Table 4.4.1) Off-Street Parking Schedule A; and Section 10.3.D.1 Definitions of General Use Categories and Specific Use Types; and Section 10.3.D.9 Definitions of General Use Categories and Specific Use Types of the Broken Arrow Zoning Ordinance (No. 2931); repealing all ordinances or parts of ordinances in conflict herewith; and declaring an emergency


MEDICAL MARIJUANA:

RETAIL SALE / DISPENSATORY, COMMERCIAL GROWING, & MANUFACTURING



| | | | | | | | | | | | | | | | | | | | | | | | | | |
|-----------------|---|---|---|---|---|---|---|---|---|---|---|---|---|---|---|---|---|---|---|---|---|---|---|---|--|
| | minor | P | P | P | P | P | P | P | P | P | P | P | P | P | P | P | P | P | P | P | P | P | P | P | |
| COMMERCIAL USES | | | | | | | | | | | | | | | | | | | | | | | | | |
| Agriculture | Agriculture | P | | | | | | | | | | | | | | | | | | | | | | | |
| | Medical Marijuana Commercial Growing /Cultivation | | | | | | | | | | | | | | | | | | | | | | P | P | |
| Animal Sales | Animal pet | | | | | | | | | | | | | | | | | | | | | | | | |

MEDICAL MARIJUANA:
COMMERCIAL GROWING



a. Medical Marijuana Commercial Growing /Cultivation
Indoor commercial medical marijuana
growing/cultivation as established by Title 63 O.S. § 422A
State of Oklahoma. Must be contained within a building
per the Building Code adopted by the City of Broken
Arrow.

MEDICAL MARIJUANA:

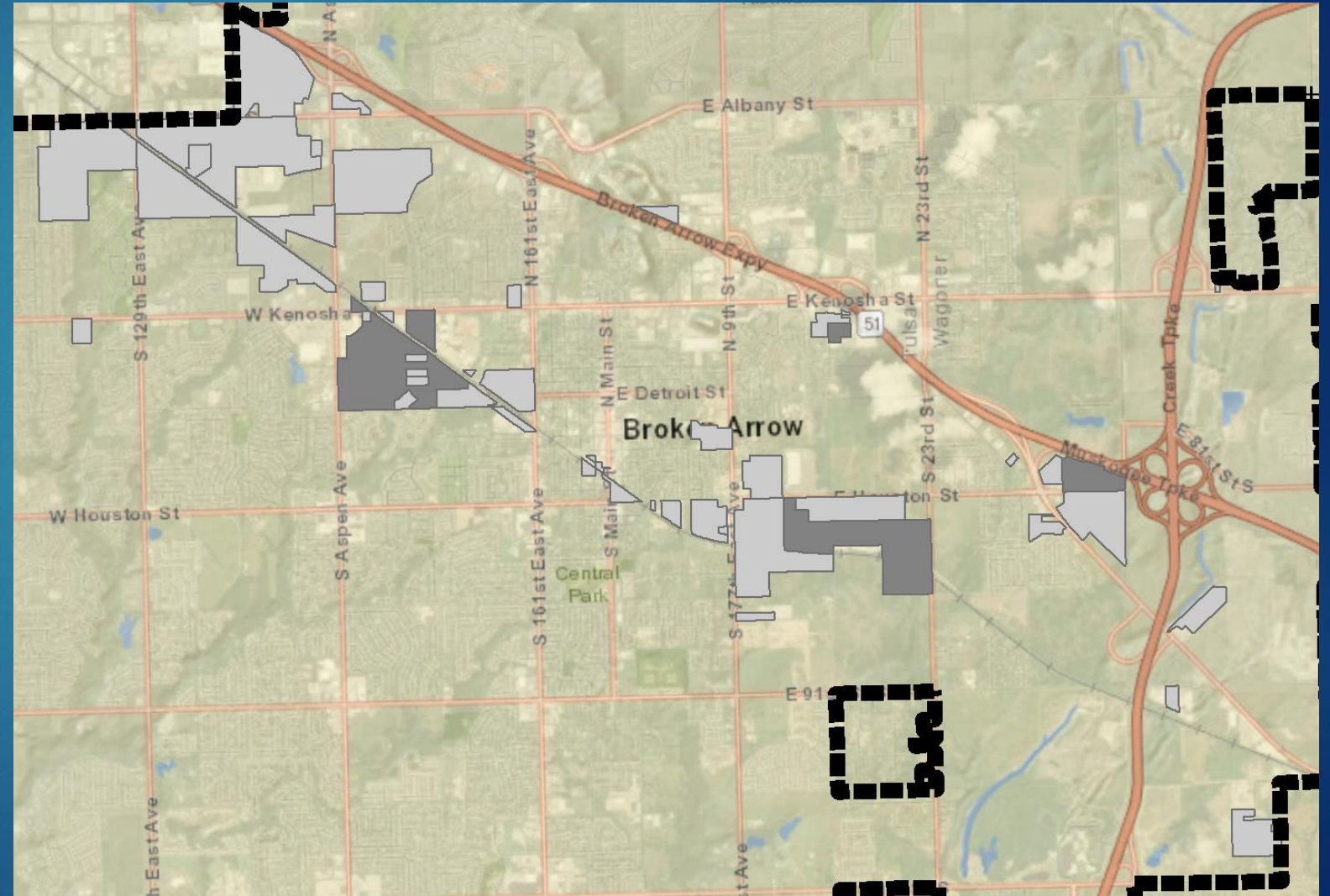
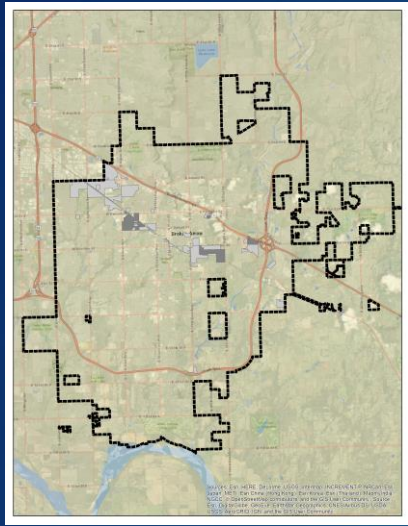
GROWING

Manufacturing, Light

An establishment engaged in the manufacture, predominantly from previously prepared materials, of finished products or parts, including processing, fabrication, assembly, treatment, and packaging of such products, and incidental storage, sales, and distribution of such products, but excluding basic industrial processing. The manufacture, assembly, research, or processing of products and goods occurs entirely within an enclosed structure requiring no outdoor industrial wastewater treatment system, and producing no airborne emissions, objectionable noise, glare, odor, vibrations, smoke or dust associated with the industrial operation. Outdoor storage of raw materials and products is permitted with proper screening. Examples include, but are not limited to: airplane, automobile, or truck assembly, remodeling, or repair; bottling works; boat building, computer chip manufacturing; machine or blacksmith shops; metalworking or welding shops; paint shops; and printing and publishing shops.

MEDICAL MARIJUANA:

MANUFACTURING / PROCESSING



MEDICAL MARIJUANA: COMMERCIAL GROWING

b. Medical Marijuana, Retail Sales

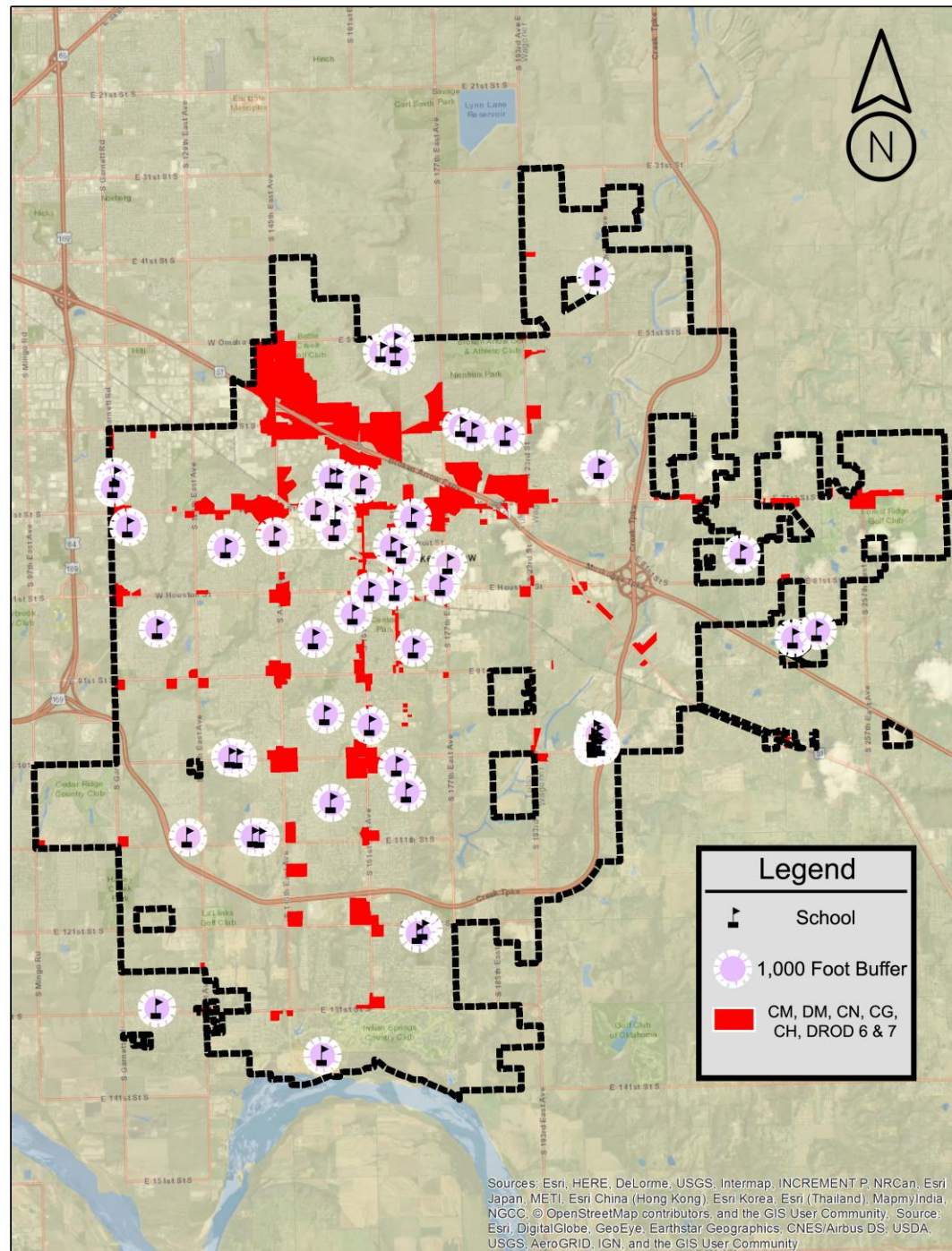
A retail establishment, like a Medical Marijuana Dispensary, licensed to sell Medical Marijuana as established by Title 63 O.S. § 421A State of Oklahoma.

i. A Medical Marijuana Dispensary permit will not be granted to any applicant where the proposed location would be located within one thousand (1,000) feet from any public or private school entrance. The distance specified shall be measured from any entrance of the school to the nearest property line point of the dispensary.

MEDICAL MARIJUANA:

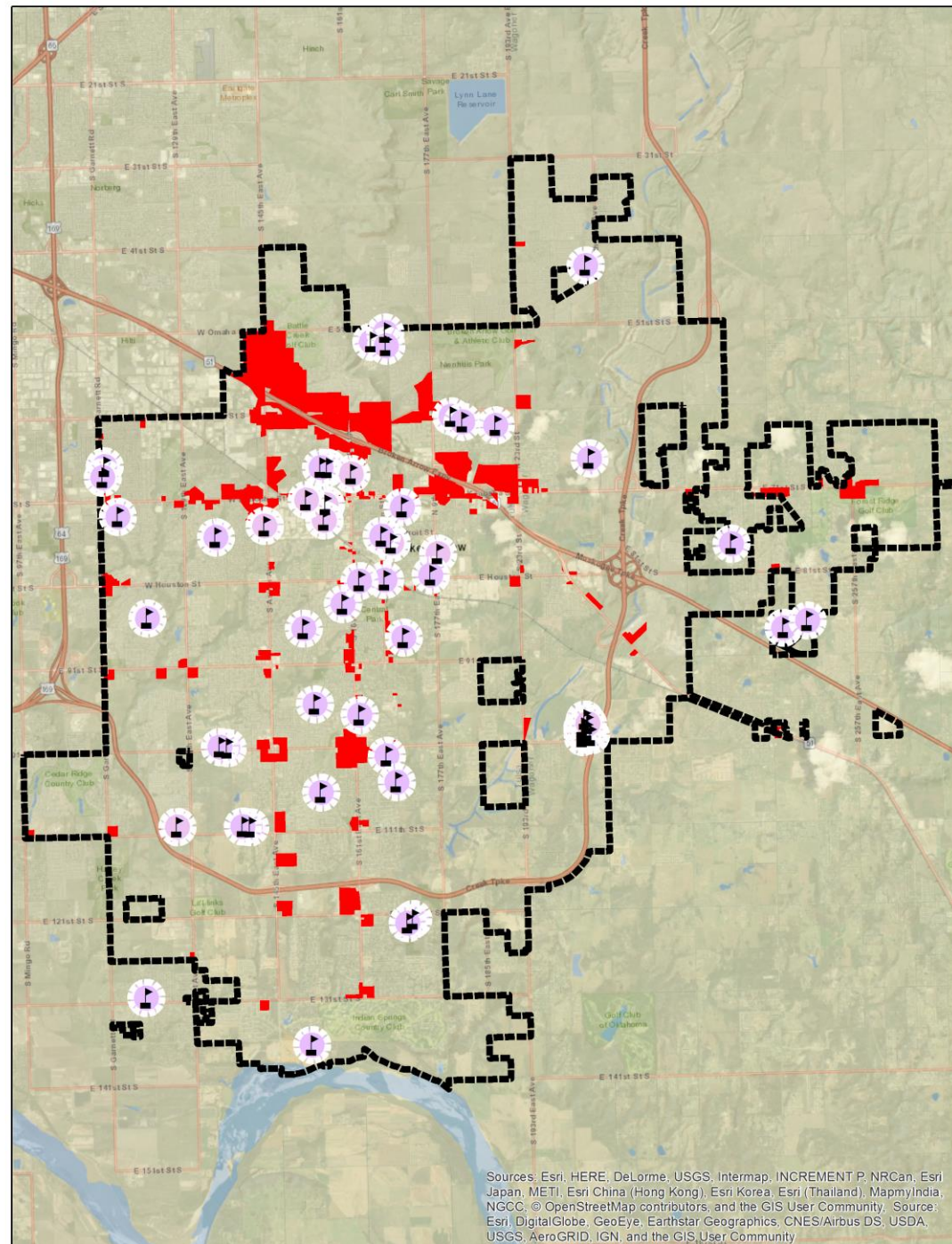
RETAIL SALES / DISPENSARY

MEDICAL MARIJUANA: RETAIL SALE / DISPENSARY



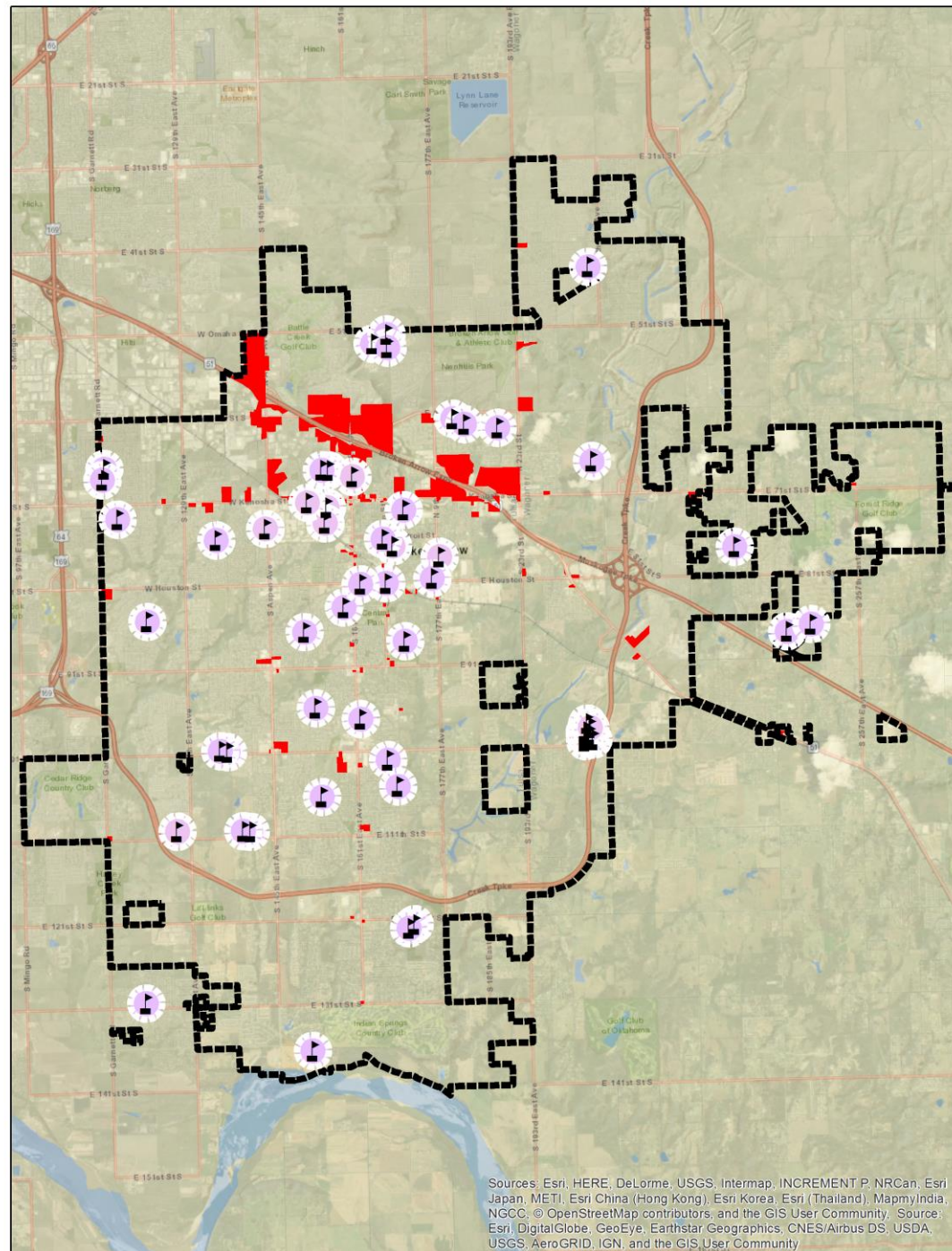
MEDICAL MARIJUANA:
RETAIL SALE / DISPENSARY

MEDICAL MARIJUANA: RETAIL SALE / DISPENSARY

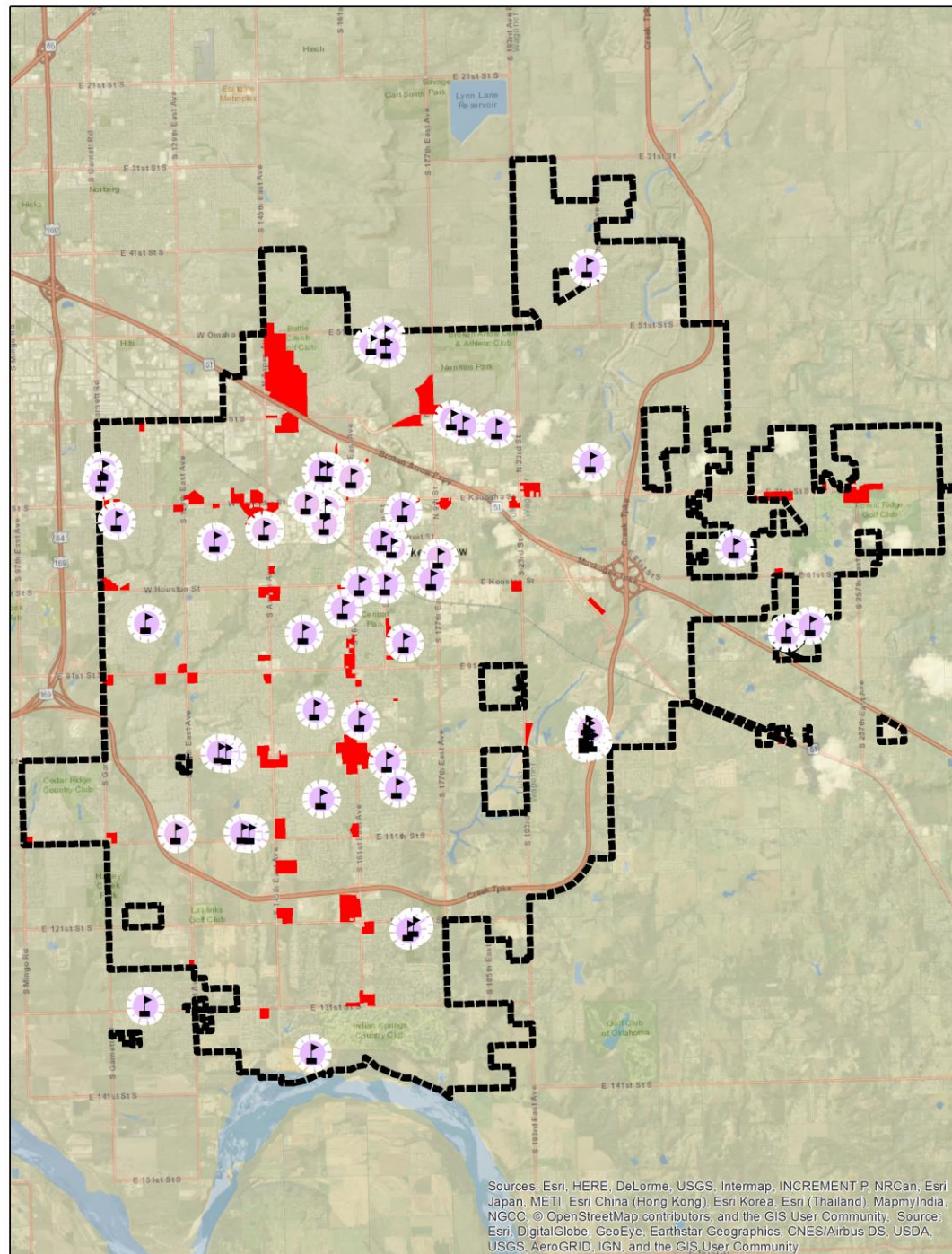


CH

MEDICAL MARIJUANA: RETAIL SALE / DISPENSARY



MEDICAL MARIJUANA: RETAIL SALE / DISPENSARY

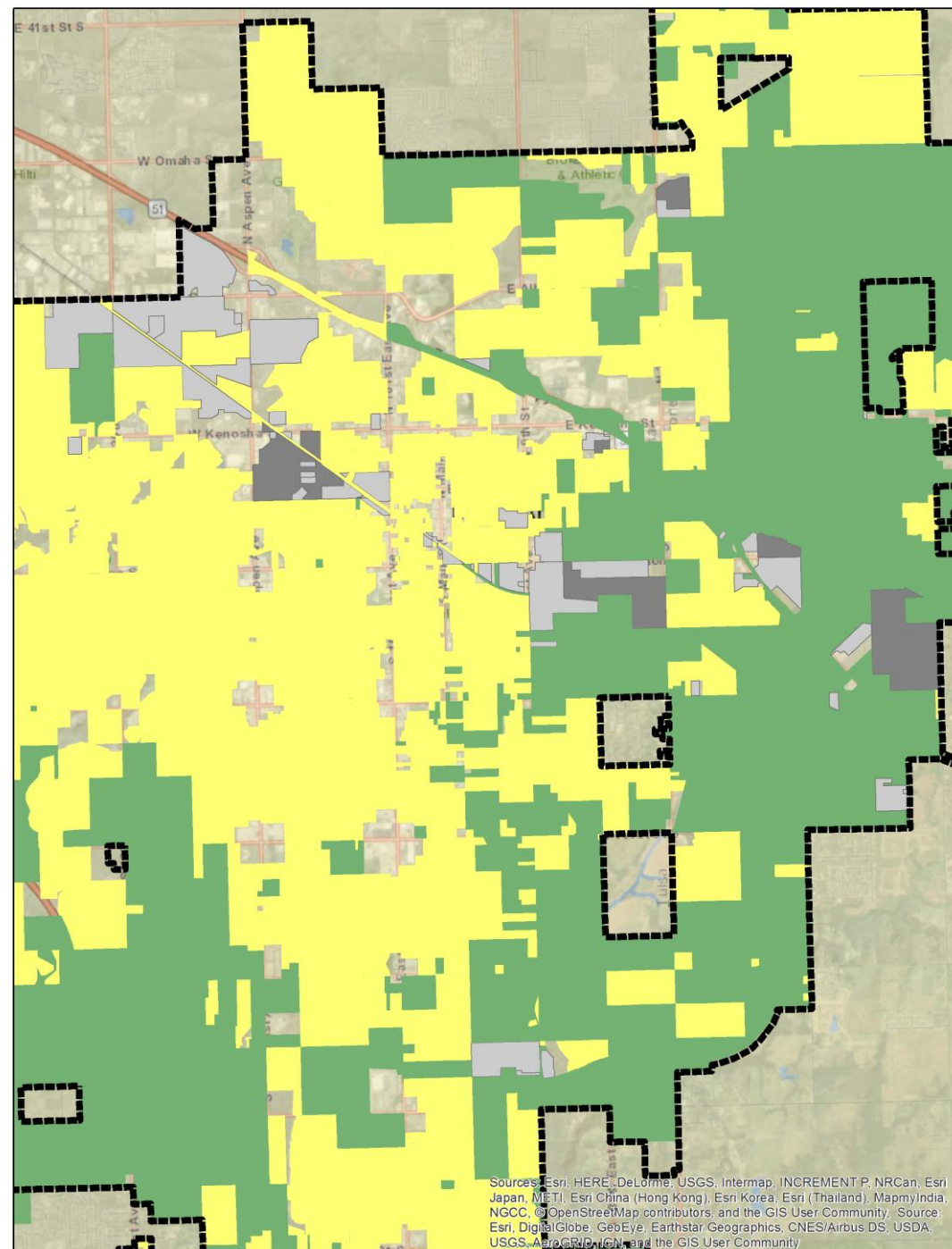


IL & IH

RESIDENTIAL

AGRICULTURAL

MEDICAL MARIJUANA:
RETAIL SALE / DISPENSARY



MEDICAL MARIJUANA:
RETAIL SALE / DISPENSARY