



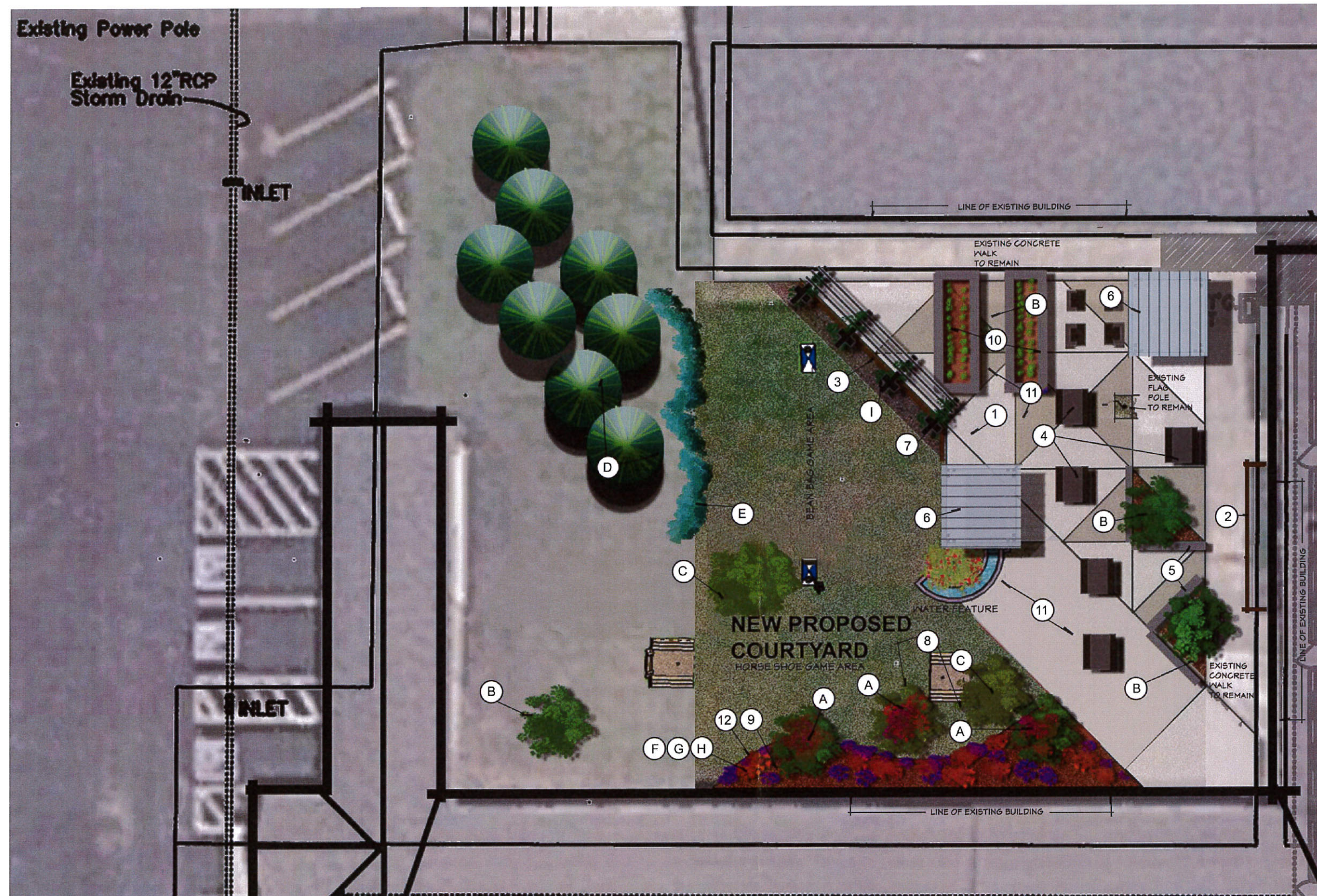


## KEYNOTES:

- 1 NEW CONCRETE PAVING
- 2 NEW FENCING SCREEN AROUND EXISTING COMPRESSORS
- 3 NEW FENCING SCREEN FOR PRIVACY AND WIND CONTROL
- 4 NEW TABLES AND BENCHES
- 5 NEW CONCRETE BENCHES
- 6 NEW 12'X12' SHADE PAVILLIONS
- 7 NEW WOOD TRELLIS FOR VINES TO SOFTEN HARDSCAPE
- 8 NEW TREES WITH BIRD FEEDING AREA
- 9 NEW ORNAMENTAL LANDSCAPE BED TO SOFTEN EXISTING BUILDING
- 10 NEW RAISED BED GARDEN AREA
- 11 NEW COLORED CONCRETE AREA W/ EXPANSION & CONTROL JOINTS FOR PHASED CONSTRUCTION
- 12 METAL EDGING AND WOOD MULCH

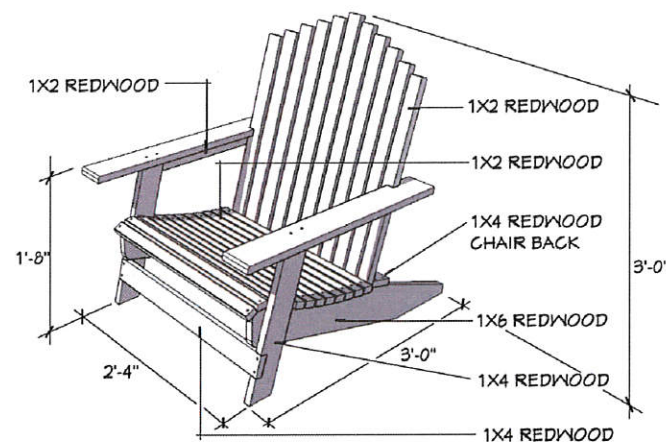
## PLANT TYPES:

- A CREPE MYRTLE (TREE)
- B PURPLE LEAF PLUMB TREE
- C TULIP TREE
- D LOBLOLLY PINE TREE
- E BOXWOOD HEDGE
- F INDIAN HAWTHORN
- G MONDO GRASS GROUND COVER
- H CREPE MYRTLE (BUSH)
- I JESSAMINE VINE

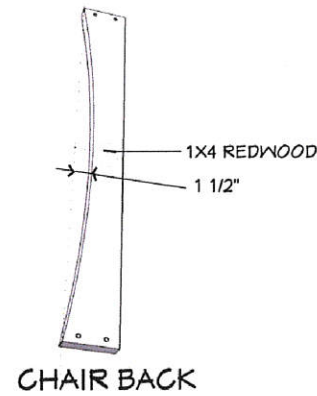


## NEW PROPOSED COURTYARD ENLARGED COURTYARD PLAN

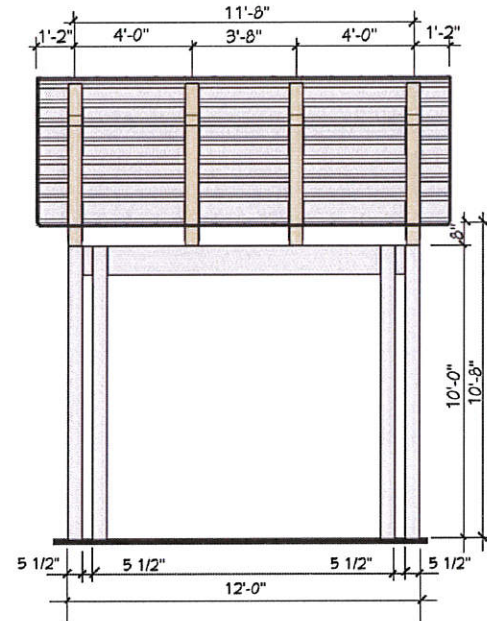




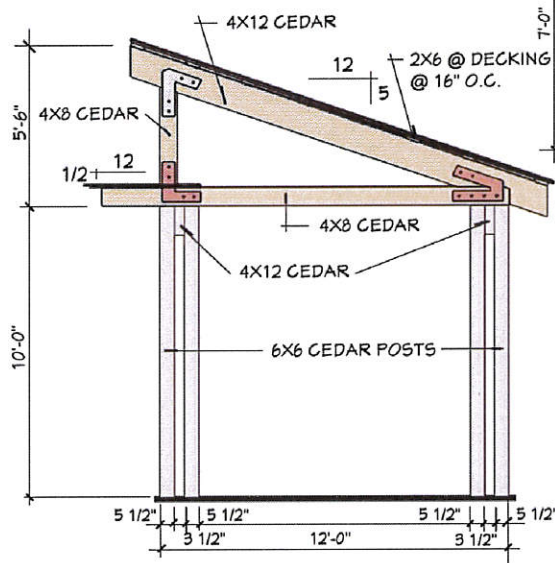
ADIRONDACK CHAIR DETAIL



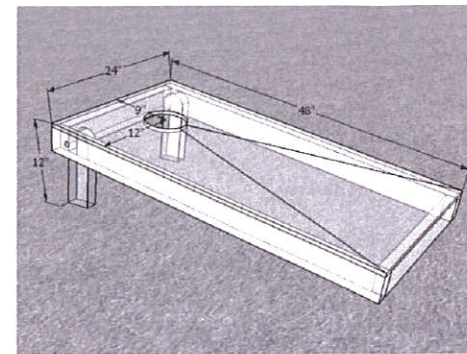
CHAIR BACK



PAVILION DETAIL



PERSPECTIVE TRELLIS DETAIL



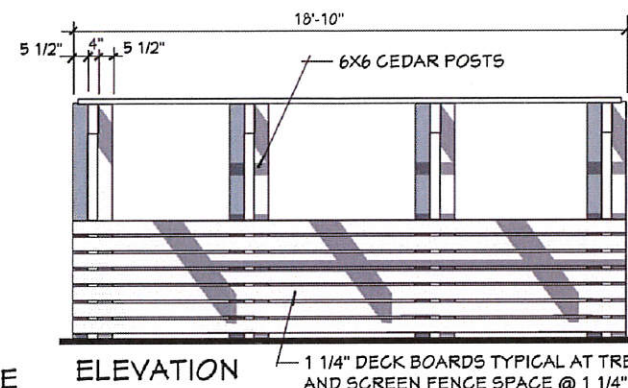
Project Cut List and Plans

You will need two 24" x 48" sections of 1/2" plywood; four 2x4 x 48" for the frame; four 2x4 x 21" for the frame; and four 2x4 x 11-1/2" for the legs

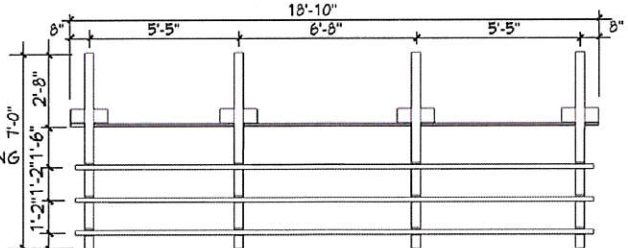
Construct the Platform Box

Cut the plywood into two 2' x 4' sections. Cut the 2x4s to the length specified in the cut list for the frame. Fasten the 2x4s into a box with the 21-inch pieces inside the 48-inch pieces to form a 2' x 4' box. Lay the plywood on top of the box, use the plywood to square up the 2x4 frame. Fasten the plywood onto the frame with 1-5/8" screws. Repeat for the second platform box.

BEAN BAG GAME DETAIL

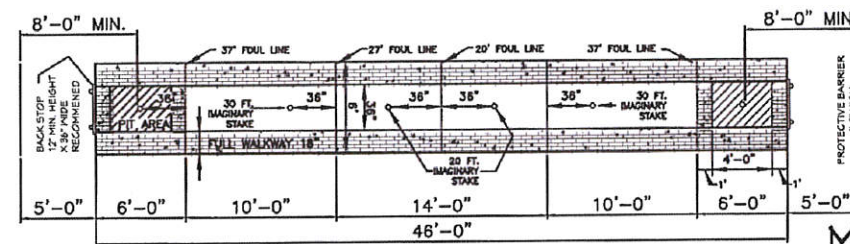


ELEVATION

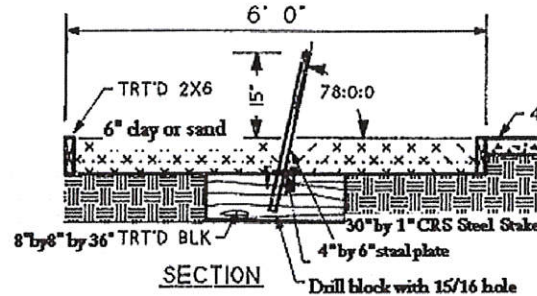


OVERHEAD PLAN

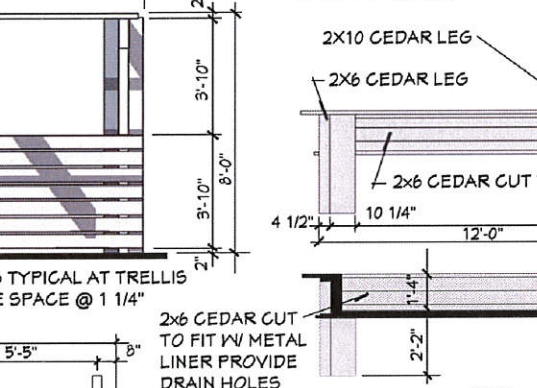
NOTE: 1. ALL CONNECTIONS AT BEAMS ARE GLUED AND LAG BOLTED TYPICAL  
2. USE GLUE AND SCREWS AT CONNECTIONS



HORSESHOE COURT LAYOUT

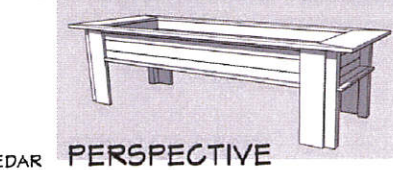


HORSE SHOE GAME DETAILS



SECTION

NOTE: 1. ALL CONNECTIONS USE GLUE AND SCREWS



PERSPECTIVE

RAISED GARDEN DETAIL

METAL PICNIC TABLE



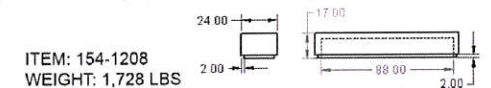
Everest Series 6-Ft. Heavy Duty Picnic Table  
Item # 395-6005

thepark AND FACILITIES CATALOG

HIGHLAND PRODUCTS GROUP LLC

GENERAL SPECIFICATIONS:  
MANUFACTURE'S QUALIFICATIONS:  
MANUFACTURING:  
REINFORCEMENT:  
COLOR:  
MATERIALS:  
REQUIRED MATERIALS FOR APPROVAL:  
A. Shop drawings with dimensions, general construction component parts, anchoring details and materials.  
B. Samples of materials and finishes.  
C. Complete details on materials and technical information.

CONCRETE BENCH



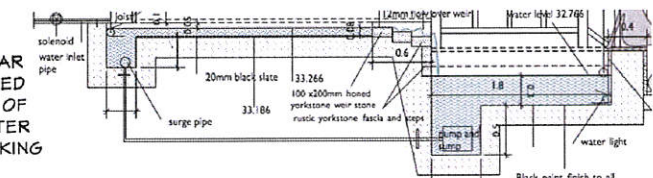
ITEM: 154-1208  
WEIGHT: 1,728 LBS



WATER FEATURE DETAIL

## NEW PROPOSED COURTYARD DETAILS

NOTE: DETAIL IS SIMILAR AND IS PROVIDED FOR CONCEPT OF DESIGNED WATER FEATURE WORKING PARTS ONLY

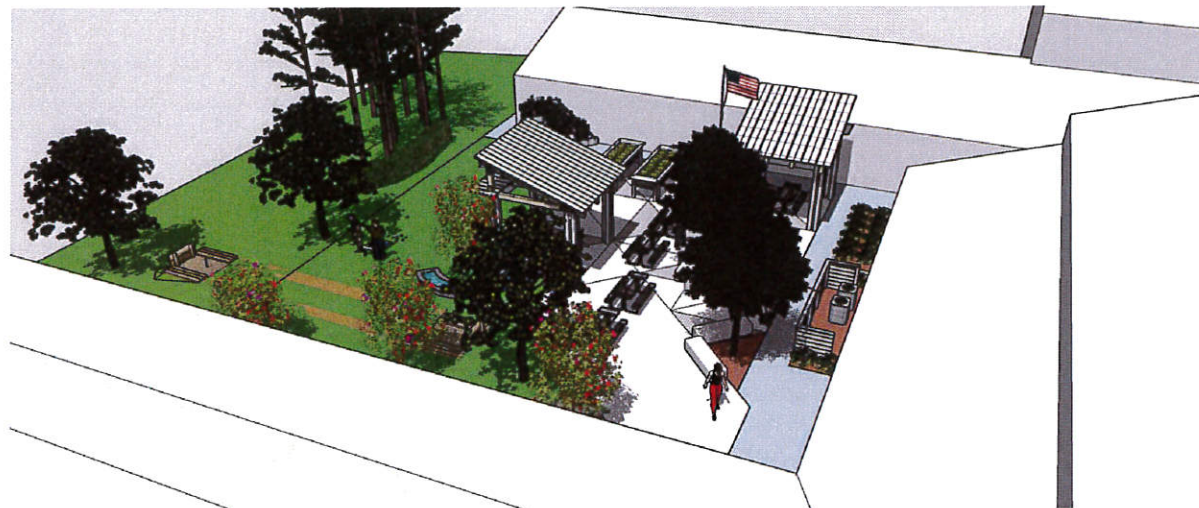


WATER FEATURE DETAIL

Architecture PLLLP  
9

Activity Center  
Broken Arrow Seniors, nc.  
"Center for Older Adults" 1800 South Main Street, Broken Arrow, Ok. 74012

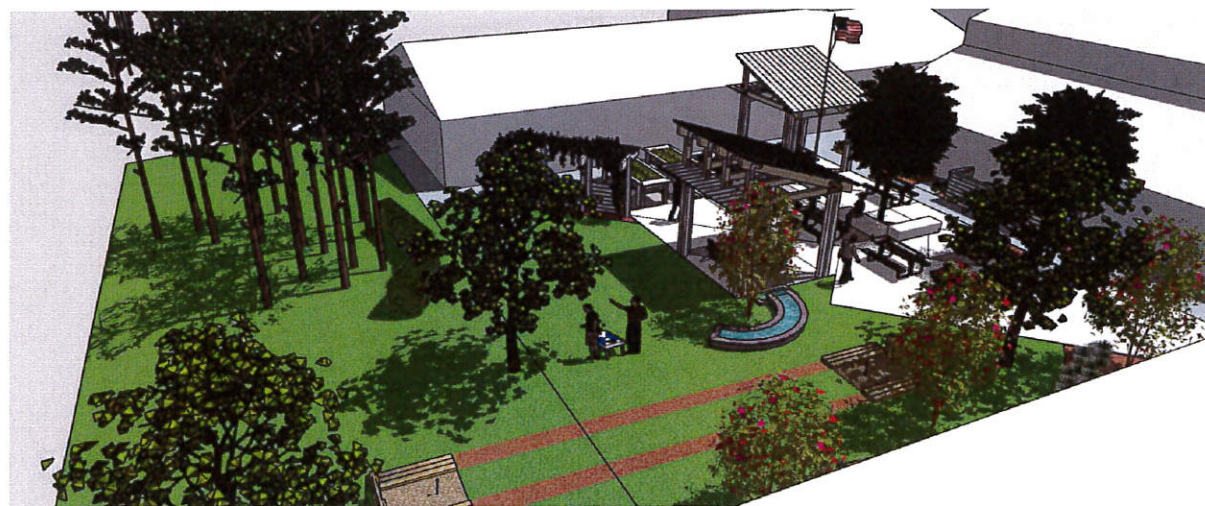




VIEW LOOKING NW - AERIAL



VIEW LOOKING NW



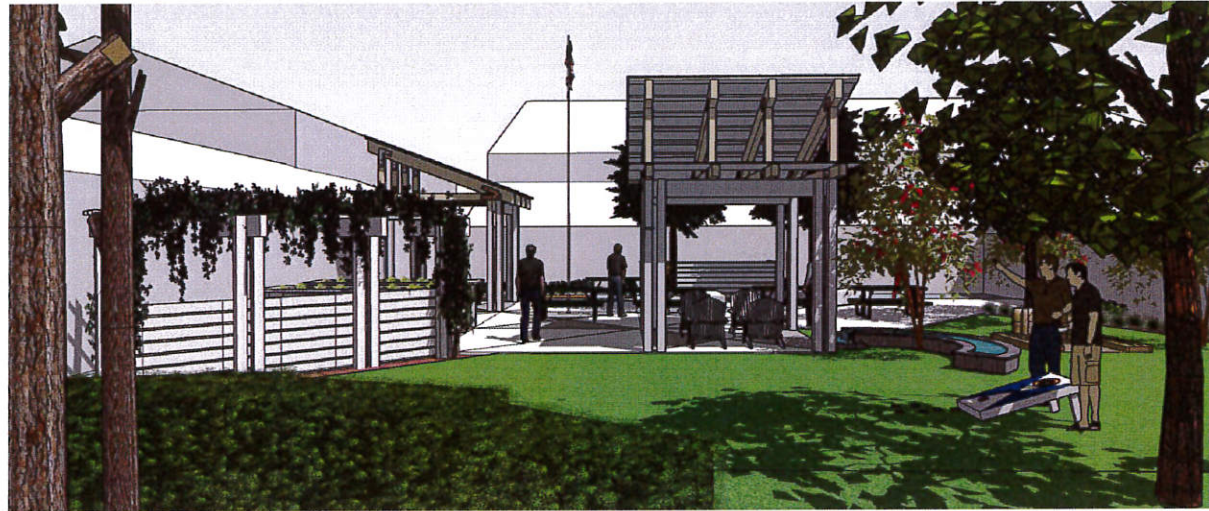
VIEW LOOKING NE - AERIAL



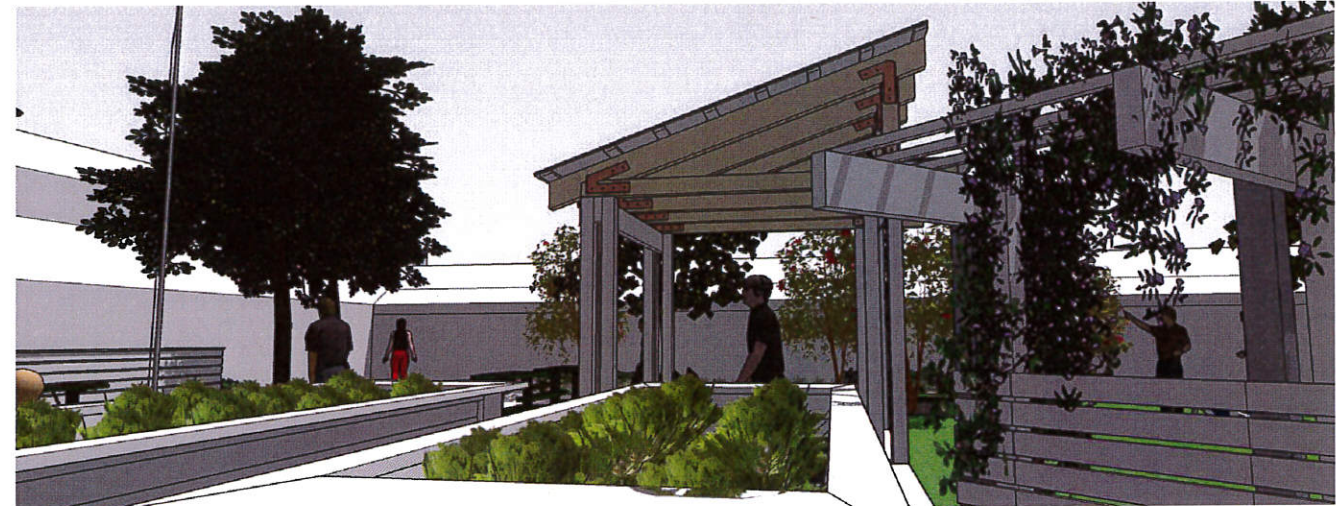
VIEW LOOKING NE

## NEW PROPOSED COURTYARD PERSPECTIVE VIEWS

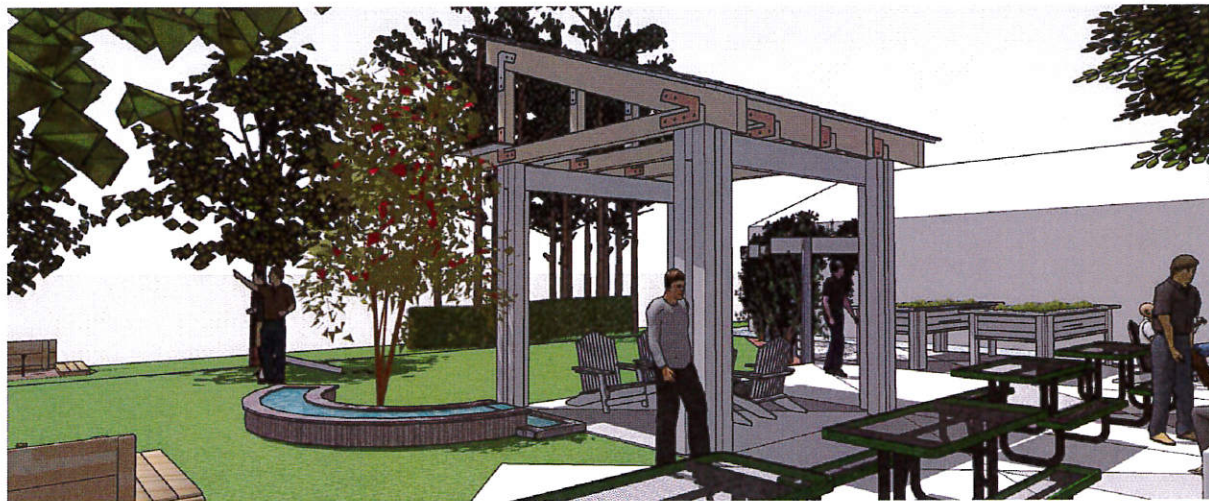




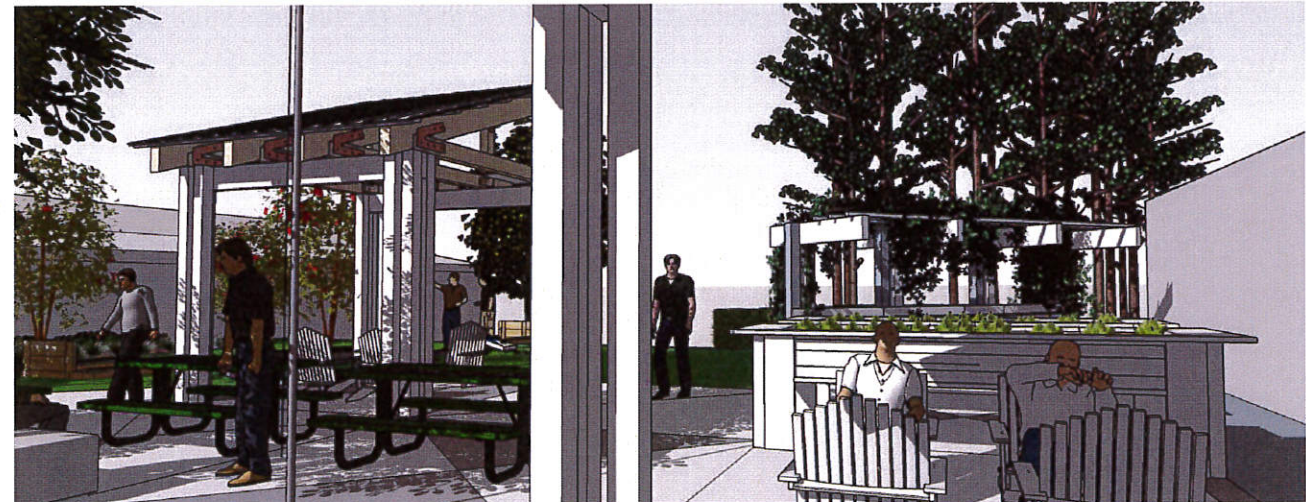
VIEW LOOKING EAST



VIEW LOOKING SOUTH



VIEW LOOKING NW



VIEW LOOKING SW

## NEW PROPOSED COURTYARD PERSPECTIVE VIEWS



**A** **Dynamite Crapemyrtle**

Tulsa Landscape Plant Data Sheet

**Dynamite Crapemyrtle**

Botanical Pronunciation: *Lagerstroemia indica* 'Whit II'

la-ger-STRE-mee-a IN-dik-a

Plant type: Tree

Deciduous/Evergreen: Deciduous

Cold hardiness: Zone 6-10

Light needs: Full Sun

Water needs: 1

Size: 15-20 feet tall and 10-15 feet wide

Growth rate: moderate



Culture: 1

Flower attributes: Clusters

Flower color: Red

Blooms: Summer into Fall

Foliage color: Green to Orange in the Fall

**B** **Thundercloud Plum**

*Prunus cerasifera* 'Thundercloud'

Height: 20 feet

Spread: 20 feet

Soil: O

Hardiness Zone: 4b

Other Names: Myrobolan Plum, Pissard Plum

**Description:**

A stunning accent tree that resembles a cloud of fragrant pink flowers in spring, deep purple foliage all season long, makes a bold statement in the landscape, best used as a solitary feature tree or in street plantings.

**Ornamental Features:**

Thundercloud Plum is bathed in stunning clusters of fragrant pink flowers along the branches in early spring before the leaves. It has attractive deep purple foliage throughout the season. The solitary leaves are highly ornamental and form an outstanding backdrop in the fall. The fruits are showy purple drupes displayed in mid summer.

**Landscape Attributes:**

Thundercloud Plum is a deciduous tree with an upright spreading habit of growth. Its average texture blends into the landscape, but can be balanced by one or two finer or coarser trees or shrubs for an effective composition. This tree will require occasional maintenance and upkeep, and is best placed in the wet or since the threat of extreme cold. Thundercloud Plum has earned it a good choice for attracting birds to your yard. Gardeners should be aware of the following characteristics that may warrant special consideration:


- Insects
- Disease

Thundercloud Plum is recommended for the following landscape applications:

- Accent
- Shade

**Planting & Growing:**

Thundercloud Plum will grow to be about 20 feet tall at maturity, with a spread of 20 feet. It has a low canopy with a typical clearance of 4 feet from the ground, and is suitable for planting under power lines. It grows at a medium rate, and under ideal conditions can be expected to live for approximately 30 years. This tree should only be grown in full sunlight. It does best in average to evenly moist conditions, but will not tolerate standing water. It is not particular as to soil type or pH. It is highly tolerant of urban pollution and will even thrive in inner city environments. This is a selected variety of a species not originally from North America.

**C** **Sweetbay Magnolia Tree**

Product Rating

★★★★★

Average: 5 (1 vote)

Category: Trees

Plant Type: Deciduous

Light Requirement: Full Sun

Soil Condition: Well Drained

Bloom Season: Spring

Bloom Color: White

Mature Height: 30 - 50ft

Growth Rate: Medium-growing

Planting Zone: 5 6 7 8 9



**Description**

**Sweetbay Magnolia Tree**

The Sweetbay Magnolia is a deciduous magnolia tree. You will find this Magnolia virginiana as a wonderful companion tree when planted near Crapemyrtles.

At one of our previous homes, we planted one of our Sweetbay Magnolias near our mailbox in full sun. From late spring to early summer, it became a daily treat to retrieve the mail with its 2 to 3 inch creamy white blossoms. The amazingly fragrant blossoms would entice us to linger for a moment to capture the lemon scented Victorian type fragrance. After 10 years of growth it stands as a magnificent specimen tree in the neighborhood.

The Magnolia Sweetbay Tree can be planted in almost any soil, from moist to wet, and will grow in much of the country with planting Zones 5-9.

**D** **Loblolly Pine**

Tulsa Landscape Plant Data Sheet

**Loblolly Pine**

Botanical Pronunciation: *Pinus taeda*

Plant type: Conifer

Deciduous/Evergreen: Evergreen

Cold hardiness: Zone 6-9

Light needs: Full Sun

Water needs: Moderate

Size: 60 to 90 feet tall and 40 to 50 feet wide

Growth rate: Fast

Culture: Most soils



Flower attributes: Does not flower

Flower color: n/a

Blooms: n/a

Foliage color: Green

TJL recommendations: Great tree for Oklahoma. I design Azaleas under this tree many times. It grows so fast, stand back & watch it grow! The pine straw is very cool also.

**E** **Wintergreen Boxwood**

Tulsa Landscape Plant Data Sheet

**Wintergreen Boxwood**

Botanical Pronunciation: *Buxus microphylla* var. *koreana* 'Wintergreen'

Plant type: Shrub

Deciduous/Evergreen: Evergreen

Cold hardiness: Zone 5-8

Light needs: Full sun to partial shade

Water needs: Moderate - low once established

Size: 3-4 feet wide, 4-5 feet tall

Growth rate: Moderate

Culture: Most soils




Flower attributes: Not showy

Flower color: n/a

Blooms: n/a

Foliage color: green

TJL recommendations: Great choice for foundation or edge planting. Not hard to maintain smaller. There are dwarf varieties too.

**F** **Indian Hawthorn**

Tulsa Landscape Plant Data Sheet

**Indian Hawthorn**

Botanical Pronunciation: *Raphiolepis indica*

Plant type: Shrub

Deciduous/Evergreen: Broadleaf Evergreen

Cold hardiness: Zones 7-10

Light needs: Partial to full sun

Water needs: Drought tolerate once established

Size: In Oklahoma 3 feet tall & wide, bigger further south

Growth rate: Moderate

Culture: Many soils




Flower attributes: 1

Flower color: White- but there are pink varieties

Blooms: Spring

Foliage color: Green

TJL recommendations: I grew up in Texas loving this shrub. Some winters can be a little tough in the transition zone.

**G** **Mondo/Dwarf Mondo Grass**

Tulsa Landscape Plant Data Sheet

**Mondo Grass**

**Dwarf Mondo Grass**

Botanical Pronunciation: *Ophiopogon japonicus*

o-fo-PO-gon ja-PON-i-kus

Plant type: Groundcover/Perennial

Deciduous/Evergreen: Evergreen

Cold hardiness: Zones 6-11

Light needs: Partial to full Sun

Water needs: low

Size: 10-12 inches tall

Growth rate: slow

Culture: most soil



Flower attributes: small

Flower color: Lilac

Blooms: Summer

Foliage color: Green

TJL recommendations: Both sizes are great addition to the landscape as a groundcover or edging

**H** **Pocomoke Crapemyrtle**

Tulsa Landscape Plant Data Sheet

**Pocomoke Crapemyrtle**

Botanical Pronunciation: *Lagerstroemia indica* 'Pocomoke'

Plant type: Shrub

Deciduous/Evergreen: Deciduous

Cold hardiness: Zone 6-9

Light needs: Full Sun

Water needs: Moderate

Size: 3-4 feet tall, 3-4 feet wide

Growth rate: Moderate

Culture: 1



Flower attributes: Cluster

Flower color: Pink

Blooms: Early Spring

Foliage color: Green

TJL recommendations: Love this low growing shrub form Crapemyrtle. Blooms like an Azalea, all season long.

**I** **Carolina Jessamine**

Tulsa Landscape Plant Data Sheet

**Carolina Jessamine**

Botanical Pronunciation: *Gelsemium sempervirens*

jel-SEM-ee-un sem-per-VY-renz

Plant type: Vine

Deciduous/Evergreen: Evergreen

Cold hardiness: Zones 5-9

Light needs: Full sun to light shade

Water needs: Moist soils

Size: 6-8 wide up to 20 feet tall

Growth rate: moderate

Culture: Most soil types



Flower attributes: Small five petal-profile

Flower color: Yellow

Blooms: Usually spring

Foliage color: Green

TJL recommendations: Great plant that overtakes fencing. Good for screening. Loves the heat.

**SPEC.**

**PLANT TYPES:**

A CREPE MYRTLE (TREE)

B PURPLE LEAF PLUMB TREE

C TULIP TREE

D LOBLOLLY PINE TREE

E BOXWOOD HEDGE

F INDIAN HAWTHORN

G MONDO GRASS GROUND COVER

H CREPE MYRTLE (BUSH)

I JESSAMINE VINE