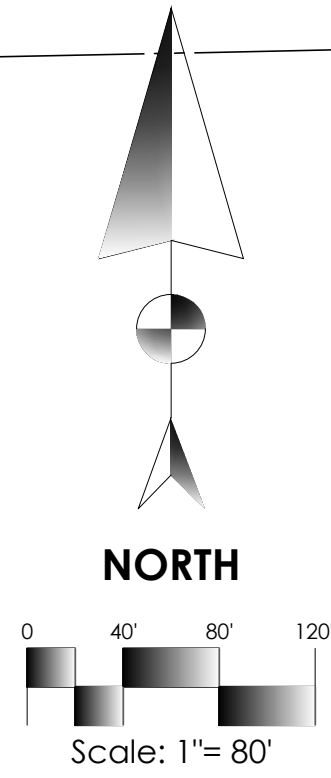
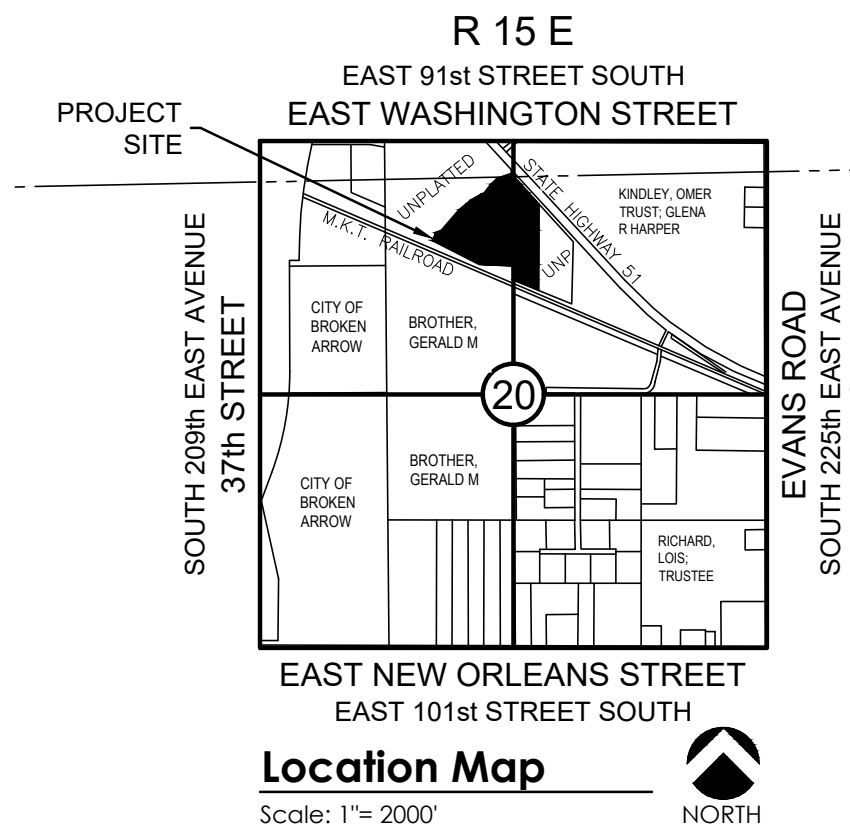


Site Plan Notes:

1. ALL DIMENSIONS SHOWN HEREON ARE TO FACE OF CURB AND FACE OF BUILDING UNLESS OTHERWISE SHOWN OTHERWISE ON PLANS.
2. THE CONTRACTOR SHALL MAINTAIN A TWO FOOT (2') SEPARATION BETWEEN THE GAS LINE CONDUIT AND ALL OTHER CONDUITS.
3. THE CONTRACTOR SHALL BE RESPONSIBLE FOR THE INSTALLATION OF ALL CONDUITS PRIOR TO PAVING WHETHER OR NOT SHOWN ON CIVIL PLANS.
4. BUILDINGS SHOWN HEREON ARE REPRESENTATIVE ONLY AND NOT FOR CONSTRUCTION.
5. CONTRACTOR TO COORDINATE ALL UTILITY SERVICES WITH UTILITY SUPPLIER.
6. COORDINATE ALL BUILDING CONNECTIONS AND LINE/METER SIZING WITH THE MECHANICAL, ELECTRICAL AND PLUMBING PLANS.
7. UTILITY SERVICE CONNECTIONS SHALL BE INSTALLED AS PER APPLICABLE CITY CODES AND SPECIFICATIONS.
8. ELECTRICAL CONDUIT SHALL BE 4" PVC SCH40 (GRAY), TELEPHONE CONDUIT SHALL BE 4" PVC SCH40 (WHITE) AND CABLE TELEVISION CONDUIT SHALL BE 4" SDR 35 PVC (WHITE). ALL ARE TO BE INSTALLED WITH A PULL STRING.
9. HANDICAP PARKING SIGNS SHALL BE CENTERED ON THE HANDICAPPED PARKING STALLS. SIGNS SHALL HAVE THE INTERNATIONAL SYMBOL OF ACCESSIBILITY ON THEM AND ONE SIGN SHALL HAVE THE STATEMENT 'VAN ACCESSIBLE' BELOW THE SYMBOL OF ACCESSIBILITY. BOTTOM OF SIGNS SHALL BE A MINIMUM OF 60" AND A MAXIMUM OF 72" ABOVE THE SIDEWALK.
10. THE UTILITY LOCATIONS REPRESENTED ON THIS DRAWING WERE COMPILED FROM BOTH FIELD OBSERVATIONS AND INFORMATION FROM VARIOUS UTILITY COMPANIES. CONTRACTOR SHALL CONTACT THE VARIOUS UTILITY COMPANIES AND THE OKIE ONE-CALL SYSTEM IN ORDER TO VERIFY LOCATIONS PRIOR TO CONSTRUCTION.
11. TOPOGRAPHIC INFORMATION SHOWN HEREON IS BASED ON THE TOPOGRAPHIC DESIGN SURVEY BY BENNETT SURVEY DATED 4/1/2015.
12. THE CONTRACTOR SHALL BE RESPONSIBLE FOR OBTAINING ALL NECESSARY WORK ORDERS AND PERMITS FROM THE CITY, INCLUDING PROVISION OF BONDS AND INSURANCE AS REQUIRED.
13. THE CONTRACTOR SHALL NOTIFY THE CITY ENGINEERING & CONSTRUCTION DEPARTMENT AT LEAST 24 HOURS PRIOR TO START OF CONSTRUCTION.
14. THE CONTRACTOR IS RESPONSIBLE FOR CONSTRUCTION STAKING.
15. VERTICAL DATUM BASED ON GPS DATA (NAVD88)
16. HORIZONTAL DATUM BASED ON OKLAHOMA STATE PLANE COORDINATE SYSTEM (NAD83).
17. FOR SITE LIGHTING LOCATIONS AND CONDUIT REFERENCE ELECTRICAL PLANS.



Location Map

Scale: 1"= 2000'

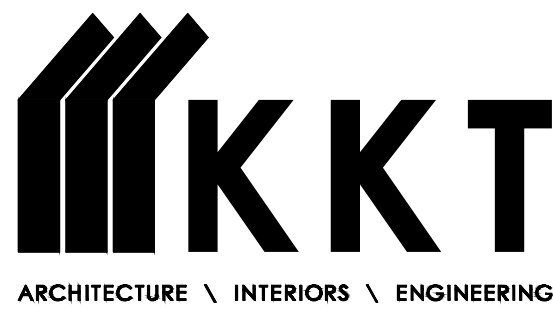
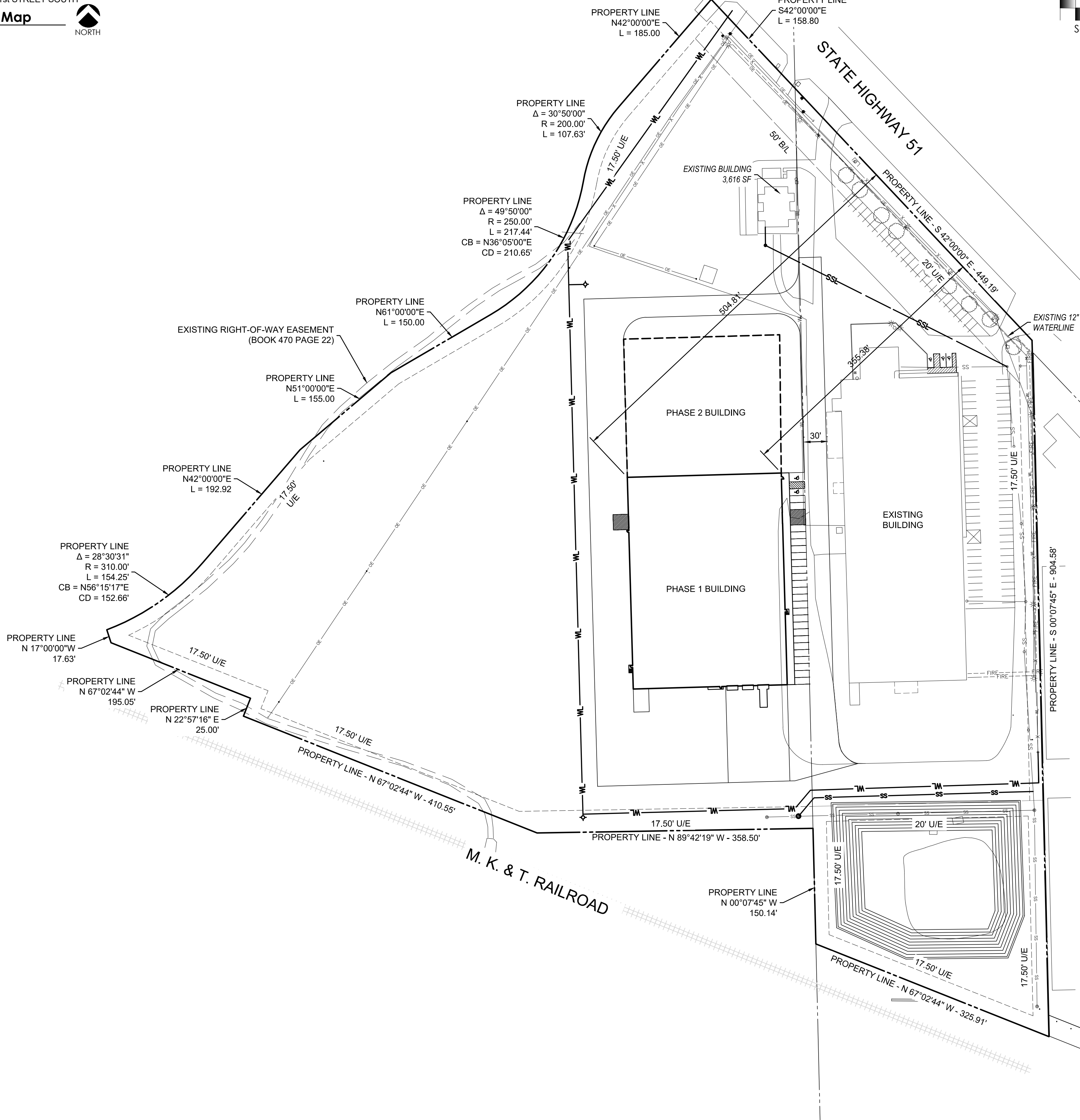


Legend

AC	ACRE
BL	BUILDING LINE
BM	BENCH MARK
CHBS	CHISELED BOX, SET
CL	CENTERLINE
CO	SEWER CLEAN-OUT
CONC	CONCRETE
COR	CORNER
CY	CUBIC YARD
E	ELECTRIC METER
EPED	ELECTRIC PEDESTAL
EL	ELEVATION
ESMT	EASEMENT
EX	EXISTING
FH	FIRE HYDRANT
FL	FLOWLINE (INVERT)
FNC	FENCE
FND	FOUND
FP	FIRE PROTECTION
G	GUTTER
GL	GAS LINE
GM	GAS METER
GUY	GUY ANCHOR
HEP	HORIZONTAL ELLIPTICAL PIPE
IP	IRON PIN
IPF	IRON PIN FOUND
IPS	IRON PIN SET
IR	IRRIGATION
IRC	IRRIGATION CONDUIT
LF	LINEAR FEET
MAE	MUTUAL ACCESS EASEMENT
OHE	OVERHEAD ELECTRIC
OT	OVERHEAD TELEPHONE
PP	POWER POLE
PPD	POWER POLE WITH DIP
PVC	POLYVINYL CHLORIDE PIPE
R	RADIUS
RCP	REINFORCED CONCRETE PIPE
RD	ROOF DRAIN
RWE	RESTRICTED WATERLINE EASEMENT
SD	STORM SEWER PIPE
SDMH	STORM SEWER MANHOLE
SF	SQUARE FEET
SS	SANITARY SEWER PIPE
SSMH	SANITARY SEWER MANHOLE
ST	STORM SEWER
SWGR	SWITCHGEAR
SY	SQUARE YARD
TC	TOP OF CURB
TG	TOP OF GUTTER
TP	TOP OF PAVING
TPED	TELEPHONE PEDESTAL
TS	TOP OF SIDEWALK
TW	TOP OF WALL
TYP	TYPICAL
U/E	UTILITY EASEMENT
UGE	UNDERGROUND ELECTRIC
UT	UNDERGROUND TELEPHONE
W	WATER LINE
W/E	WATER LINE EASEMENT
WM	WATER METER
WMH	WATER MANHOLE
WSL	WATER SERVICE LINE
WV	WATER VALVE
XMR	TRANSFORMER

Benchmark 1

ADS MONUMENT BA 25 - 3" ALUMINUM CAP SET
STAMPED "BA 25" ON THE NORTH SIDE OF E. 91ST ST
S., APPROX. 0.45 MILE EAST OF S. 225TH AVE
ELEV = 717.78 (NGVD 1929)



KKT ARCHITECTS, INC.
2200 SOUTH UTICA PLACE, SUITE 200
TULSA, OKLAHOMA 74114
[P] 918.744.4270 \ [F] 918.744.7849
WWW.KKTARCHITECTS.COM

CONTINENTAL
INDUSTRIES
ADDITION

21808 EAST
HIGHWAY 51
BROKEN
ARROW, OK

COWEN
CONSTRUCTION

NOT FOR
CONSTRUCTION

HORT SCALE	•	1"=80'
VERT SCALE	•	-
ATLAS PAGE NO.	•	-
MANAGER	•	ANW
DRAWN BY	•	TBW
DATE	•	5/15/2018
•	•	
•	•	
•	•	
•	•	

CONCEPTUAL
SITE PLAN

EXHIBIT A