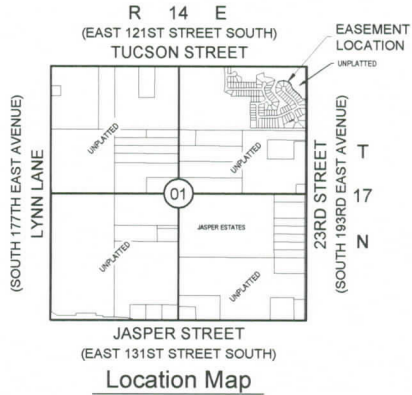
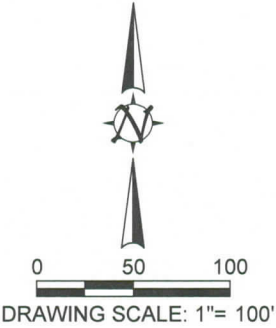


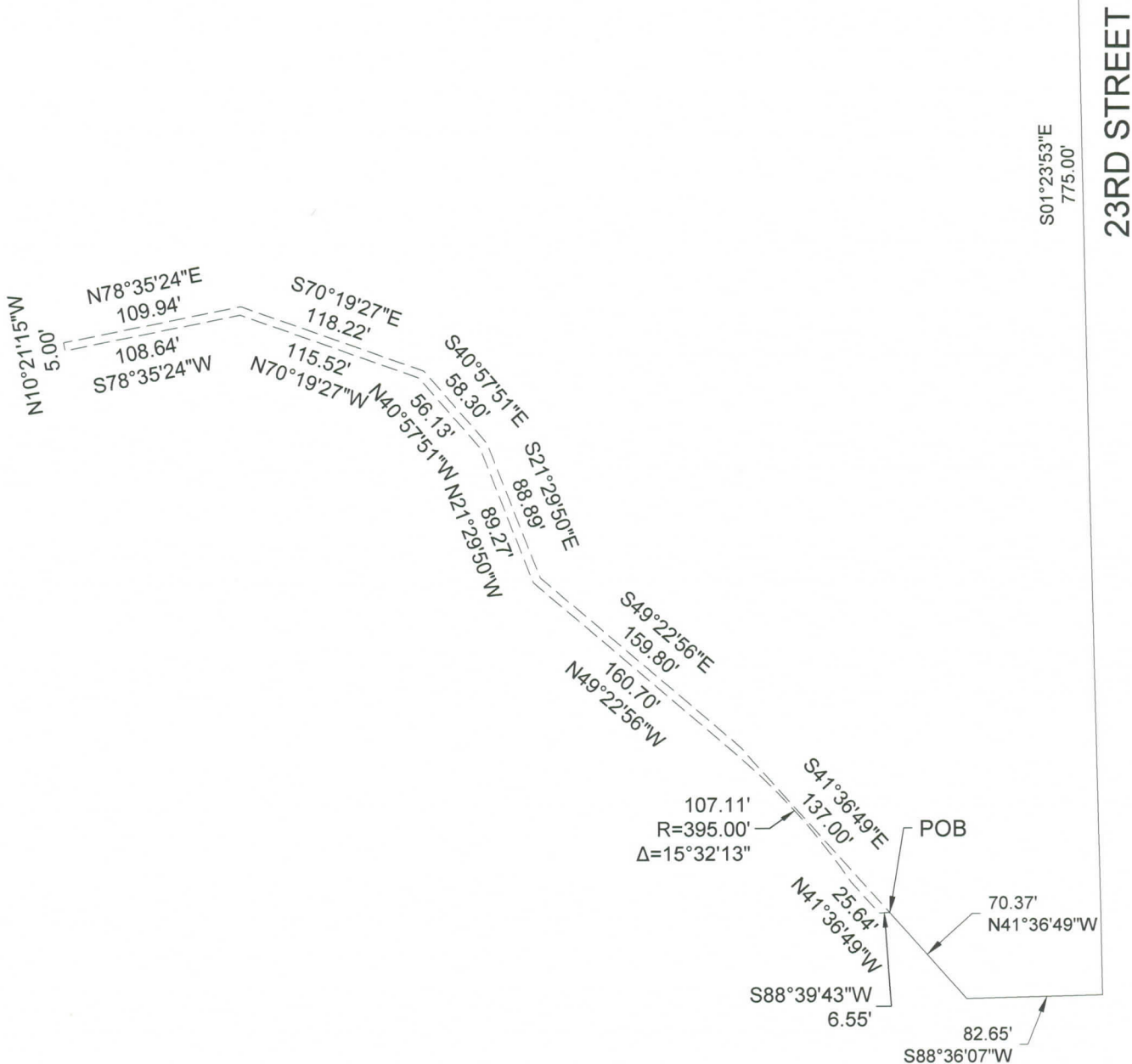
Utility Easement

Exhibit F

(Page 1 of 2)



POC
NE COR.
SECTION 1



Utility Easement Exhibit F

(Page 2 of 2)

A TRACT OF LAND SITUATED IN GOVERNMENT LOT 1 OF SECTION 1, TOWNSHIP 17 NORTH, RANGE 14 EAST, OF THE INDIAN BASE AND MERIDIAN, CITY OF BROKEN ARROW, TULSA COUNTY, STATE OF OKLAHOMA, ACCORDING TO THE U.S. GOVERNMENT SURVEY THEREOF, MORE PARTICULARLY DESCRIBED AS FOLLOWS:

COMMENCING AT THE NORTHEAST CORNER OF SAID SECTION 1; THENCE SOUTH 01°23'53" EAST ALONG THE EAST LINE OF SAID SECTION 1 A DISTANCE OF 775.00 FEET; THENCE SOUTH 88°36'07" WEST A DISTANCE OF 82.65 FEET; THENCE NORTH 41°36'49" WEST A DISTANCE OF 70.37 FEET TO THE POINT OF BEGINNING. THENCE SOUTH 88°39'43" WEST A DISTANCE OF 6.55 FEET; THENCE NORTH 41°36'49" WEST A DISTANCE OF 25.64 FEET; THENCE NORTH 33°50'43" WEST A DISTANCE OF 0.0 FEET TO A POINT OF CURVE; THENCE ON A CURVE TO THE LEFT WITH A RADIUS OF 395.00 FEET, HAVING A CENTRAL ANGLE OF 15°32'13", A CHORD BEARING AND DISTANCE OF NORTH 41°36'49" WEST A DISTANCE OF 106.78 FEET, FOR AN ARC LENGTH OF 107.11 FEET; THENCE NORTH 49°22'56" WEST A DISTANCE OF 160.70 FEET; THENCE NORTH 21°29'50" WEST A DISTANCE OF 89.27 FEET; THENCE NORTH 40°57'51" WEST A DISTANCE OF 56.13 FEET; THENCE NORTH 70°19'27" WEST A DISTANCE OF 115.52 FEET; THENCE SOUTH 78°35'24" WEST A DISTANCE OF 108.64 FEET; THENCE NORTH 10°21'15" WEST A DISTANCE OF 5.00 FEET; THENCE NORTH 78°35'24" EAST A DISTANCE OF 109.94 FEET; THENCE SOUTH 70°19'27" EAST A DISTANCE OF 118.22 FEET; THENCE SOUTH 40°57'51" EAST A DISTANCE OF 58.30 FEET; THENCE SOUTH 21°29'50" EAST A DISTANCE OF 88.89 FEET; THENCE SOUTH 49°22'56" EAST A DISTANCE OF 159.80 FEET; THENCE SOUTH 41°36'49' EAST A DISTANCE OF 137.00 FEET TO THE POINT OF BEGINNING.

SAID TRACT CONTAINS 3,078.82 S.F. OR 0.07 ACRES MORE OR LESS.

REAL PROPERTY CERTIFICATION

I, ERIC ROLLSTON, CERTIFY THAT THE ATTACHED LEGAL DESCRIPTION CLOSES IN ACCORDANCE WITH EXISTING RECORDS, IS A TRUE REPRESENTATION OF THE REAL PROPERTY AS DESCRIBED, AND MEETS THE MINIMUM TECHNICAL STANDARDS FOR LAND SURVEYING OF THE STATE OF OKLAHOMA.

 5/4/2017

ERIC ROLLSTON
OKLAHOMA PLS NO. 1761

