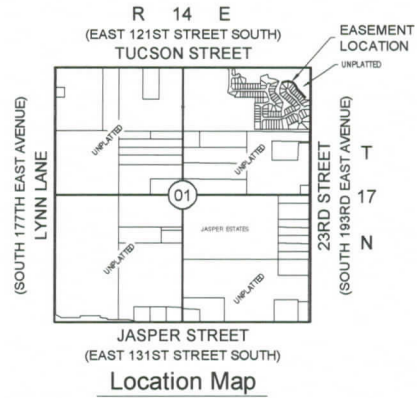
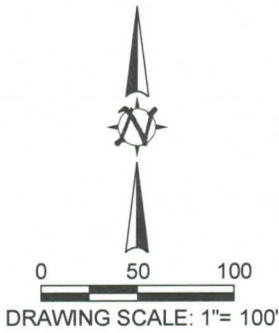


Drainage Easement

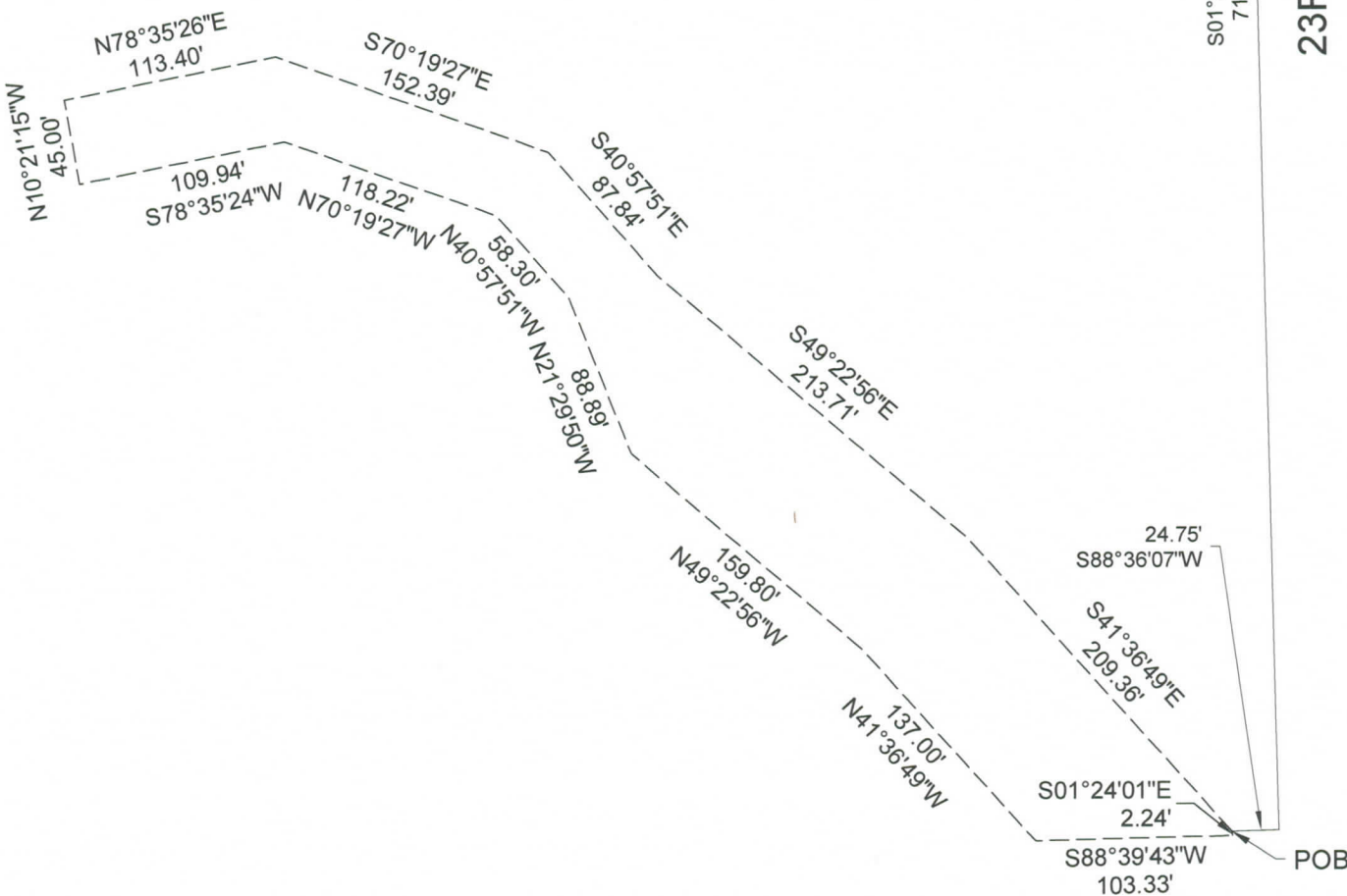
Exhibit D

(Page 1 of 2)



POC
NE COR.
SECTION 1

23RD STREET



PLOT DATE: Thu, 20 Jul 2017 FILE: P:\1714\01-TUCSON VILLAGE\TUCSON BASE - OFFSITE EASEMENTS

Drainage Easement Exhibit D

(Page 2 of 2)

A TRACT OF LAND SITUATED IN GOVERNMENT LOT 1 OF SECTION 1, TOWNSHIP 17 NORTH, RANGE 14 EAST, OF THE INDIAN BASE AND MERIDIAN, CITY OF BROKEN ARROW, TULSA COUNTY, STATE OF OKLAHOMA, ACCORDING TO THE U.S. GOVERNMENT SURVEY THEREOF, MORE PARTICULARLY DESCRIBED AS FOLLOWS:

COMMENCING AT THE NORTHEAST CORNER OF SAID SECTION 1; THENCE SOUTH 01°23'53" EAST ALONG THE EAST LINE OF SAID SECTION 1 A DISTANCE OF 719.14 FEET; THENCE SOUTH 88°36'07" WEST A DISTANCE OF 24.75 FEET TO THE POINT OF BEGINNING. THENCE SOUTH 01°24'01" EAST A DISTANCE OF 2.24 FEET; THENCE SOUTH 88°39'43" WEST A DISTANCE OF 103.33 FEET; THENCE NORTH 41°36'49" WEST A DISTANCE OF 137.00 FEET; THENCE NORTH 49°22'56" WEST A DISTANCE OF 159.80 FEET; THENCE NORTH 21°29'50" WEST A DISTANCE OF 88.89 FEET; THENCE NORTH 40°57'51" WEST A DISTANCE OF 58.30 FEET; THENCE NORTH 70°19'27" WEST A DISTANCE OF 118.22 FEET; THENCE SOUTH 78°35'24" WEST A DISTANCE OF 109.94 FEET; THENCE NORTH 10°21'15" WEST A DISTANCE OF 45.00 FEET; THENCE NORTH 78°35'26" EAST A DISTANCE OF 113.40 FEET; THENCE SOUTH 70°19'27" EAST A DISTANCE OF 152.39 FEET; THENCE SOUTH 40°57'51" EAST A DISTANCE OF 87.84 FEET; THENCE SOUTH 49°22'56" EAST A DISTANCE OF 213.71 FEET; THENCE SOUTH 41°36'49" EAST A DISTANCE OF 209.36 FEET TO THE POINT OF BEGINNING.

SAID TRACT CONTAINS 44,831 S.F. OR 1.03 ACRES OR MORE OR LESS.

REAL PROPERTY CERTIFICATION

I, ERIC ROLLSTON, CERTIFY THAT THE ATTACHED LEGAL DESCRIPTION CLOSES IN ACCORDANCE WITH EXISTING RECORDS, IS A TRUE REPRESENTATION OF THE REAL PROPERTY AS DESCRIBED, AND MEETS THE MINIMUM TECHNICAL STANDARDS FOR LAND SURVEYING OF THE STATE OF OKLAHOMA.

 7/20/2017

ERIC ROLLSTON

OKLAHOMA PLS NO. 1761

