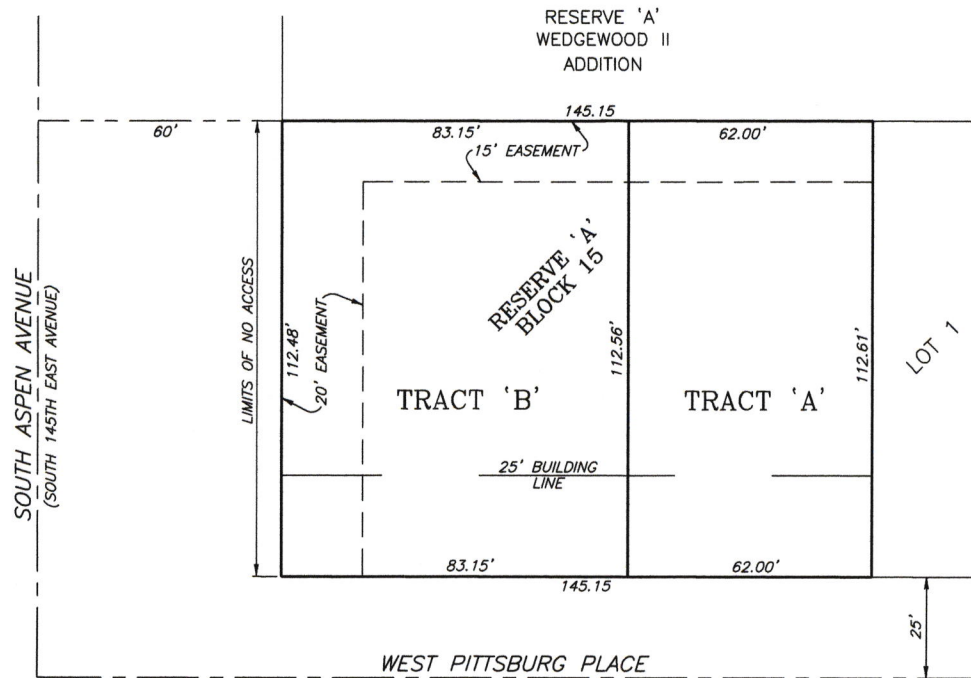


LOT SPLIT EXHIBIT



Legal Description

PARENT TRACT

RESERVE 'A', BLOCK FIFTEEN (15), STACEY LYNN FIFTH ADDITION, AN ADDITION TO THE CITY OF BROKEN ARROW, TULSA COUNTY, STATE OF OKLAHOMA, ACCORDING TO RECORDED PLAT NO. 3300.

TRACT 'A'

THE EAST 62.00 FEET OF RESERVE 'A', BLOCK FIFTEEN (15), STACEY LYNN FIFTH ADDITION, AN ADDITION TO THE CITY OF BROKEN ARROW, TULSA COUNTY, STATE OF OKLAHOMA, ACCORDING TO RECORDED PLAT NO. 3300. CONTAINING 6754.99 SQ. FT. OR 0.16 ACRES, MORE OR LESS.

TRACT 'B'

RESERVE 'A', BLOCK FIFTEEN (15), STACEY LYNN FIFTH ADDITION, AN ADDITION TO THE CITY OF BROKEN ARROW, TULSA COUNTY, STATE OF OKLAHOMA, ACCORDING TO RECORDED PLAT NO. 3300, LESS AND EXCEPT THE EAST 62.00 FEET THEREOF. CONTAINING 9580.91 SQ. FT. OR 0.22 ACRES, MORE OR LESS.

Surveyor's Statement

HRAOK AND I, SALVADOR TITONE, A PROFESSIONAL LAND SURVEYOR IN THE STATE OF OKLAHOMA, DO HEREBY STATE THAT THE ABOVE MAP REPRESENTS A SURVEY PERFORMED IN THE FIELD UNDER MY DIRECT SUPERVISION AND IS TRUE AND CORRECT TO THE BEST OF MY KNOWLEDGE AND BELIEF AS OF THIS DATE. THIS SURVEY MEETS OR EXCEEDS THE MINIMUM STANDARDS FOR SURVEYING IN THE STATE OF OKLAHOMA AS SET FORTH BY THE OKLAHOMA STATE BOARD OF REGISTRATION FOR PROFESSIONAL ENGINEERS AND LAND SURVEYOR'S AS OF THIS DATE.

WITNESS MY HAND AND SEAL THIS 7TH DAY OF JUNE 2017.

HRAOK

SALVADOR TITONE
PROFESSIONAL LAND SURVEYOR
OKLAHOMA NO. 1460



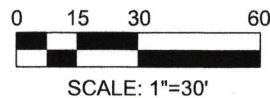
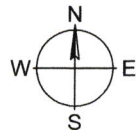
PATH: A:\18-14-19\170607.61 BOOS LOT SPLIT\Final Drawings
FILE: LOT SPLIT FINAL.dwg
DATE: Jun 08, 2017 - 9:19AM



BEFORE YOU DIG
CONTACT OKLAHOMA
ONE-CALL:

1-800-522-6543

EXISTING UNDERGROUND LINES HAVE
BEEN SHOWN TO THE EXTENT KNOWN



PREPARED FOR: BOOS BUILDERS

CHECKED BY:	ST	SCALE:	1"=30'
SURVEY BY:	N/A	DRAFTED BY:	DWM
SURVEY DATE:	N/A	JOB NUMBER:	170607.61
BOOK / PAGE:	N/A	FILE NUMBER:	1814.15



1913 WEST TACOMA - SUITE A
BROKEN ARROW, OKLAHOMA 74012
VOICE: (918) 258-3737
FAX: (918) 258-2554



1913 W Tacoma, Suite A
Broken Arrow, Oklahoma 74012

Office: 918.258.3737
Fax: 918.258.2554

JUNE 7, 2017

PARENT TRACT

RESERVE 'A', BLOCK FIFTEEN (15), STACEY LYNN FIFTH ADDITION, AN ADDITION TO THE CITY OF BROKEN ARROW, TULSA COUNTY, STATE OF OKLAHOMA, ACCORDING TO RECORDED PLAT NO. 3300.


TRACT 'A'

THE EAST 62.00 FEET OF RESERVE 'A', BLOCK FIFTEEN (15), STACEY LYNN FIFTH ADDITION, AN ADDITION TO THE CITY OF BROKEN ARROW, TULSA COUNTY, STATE OF OKLAHOMA, ACCORDING TO RECORDED PLAT NO. 3300. CONTAINING 6754.99 SQ. FT. OR 0.16 ACRES, MORE OR LESS.

TRACT 'B'

RESERVE 'A', BLOCK FIFTEEN (15), STACEY LYNN FIFTH ADDITION, AN ADDITION TO THE CITY OF BROKEN ARROW, TULSA COUNTY, STATE OF OKLAHOMA, ACCORDING TO RECORDED PLAT NO. 3300, LESS AND EXCEPT THE EAST 62.00 FEET THEREOF. CONTAINING 9580.91 SQ. FT. OR 0.22 ACRES, MORE OR LESS.

WITNESS MY HAND AND SEAL


SALVADOR TITONE
OKLAHOMA PROFESSIONAL
LAND SURVEYOR NO. 1460

06/07/17
DATE





1913 W Tacoma, Suite A
Broken Arrow, Oklahoma 74012


Office: 918.258.3737
Fax: 918.258.2554

JUNE 7, 2017

TRACT 'A'

THE EAST 62.00 FEET OF RESERVE 'A', BLOCK FIFTEEN (15), STACEY LYNN FIFTH ADDITION, AN ADDITION TO THE CITY OF BROKEN ARROW, TULSA COUNTY, STATE OF OKLAHOMA, ACCORDING TO RECORDED PLAT NO. 3300. CONTAINING 6754.99 SQ. FT. OR 0.16 ACRES, MORE OR LESS.

WITNESS MY HAND AND SEAL

 06/07/17
SALVADOR TITONE DATE
OKLAHOMA PROFESSIONAL
LAND SURVEYOR NO. 1460





1913 W Tacoma, Suite A
Broken Arrow, Oklahoma 74012


Office: 918.258.3737
Fax: 918.258.2554

JUNE 7, 2017

TRACT 'B'

RESERVE 'A', BLOCK FIFTEEN (15), STACEY LYNN FIFTH ADDITION, AN ADDITION TO THE CITY OF
BROKEN ARROW, TULSA COUNTY, STATE OF OKLAHOMA, ACCORDING TO RECORDED PLAT NO.
3300, LESS AND EXCEPT THE EAST 62.00 FEET THEREOF. CONTAINING 9580.91 SQ. FT. OR 0.22
ACRES, MORE OR LESS.

WITNESS MY HAND AND SEAL

 06/07/17
SALVADOR TITONE DATE
OKLAHOMA PROFESSIONAL
LAND SURVEYOR NO. 1460

