

Line Table		
No.	Bearing	Distance
L1	N 01°19'28"W	150.00'
L2	N 02°29'23"E	150.33'
L3	N 01°19'28"W	65.00'
L4	N 43°40'32"E	49.50'

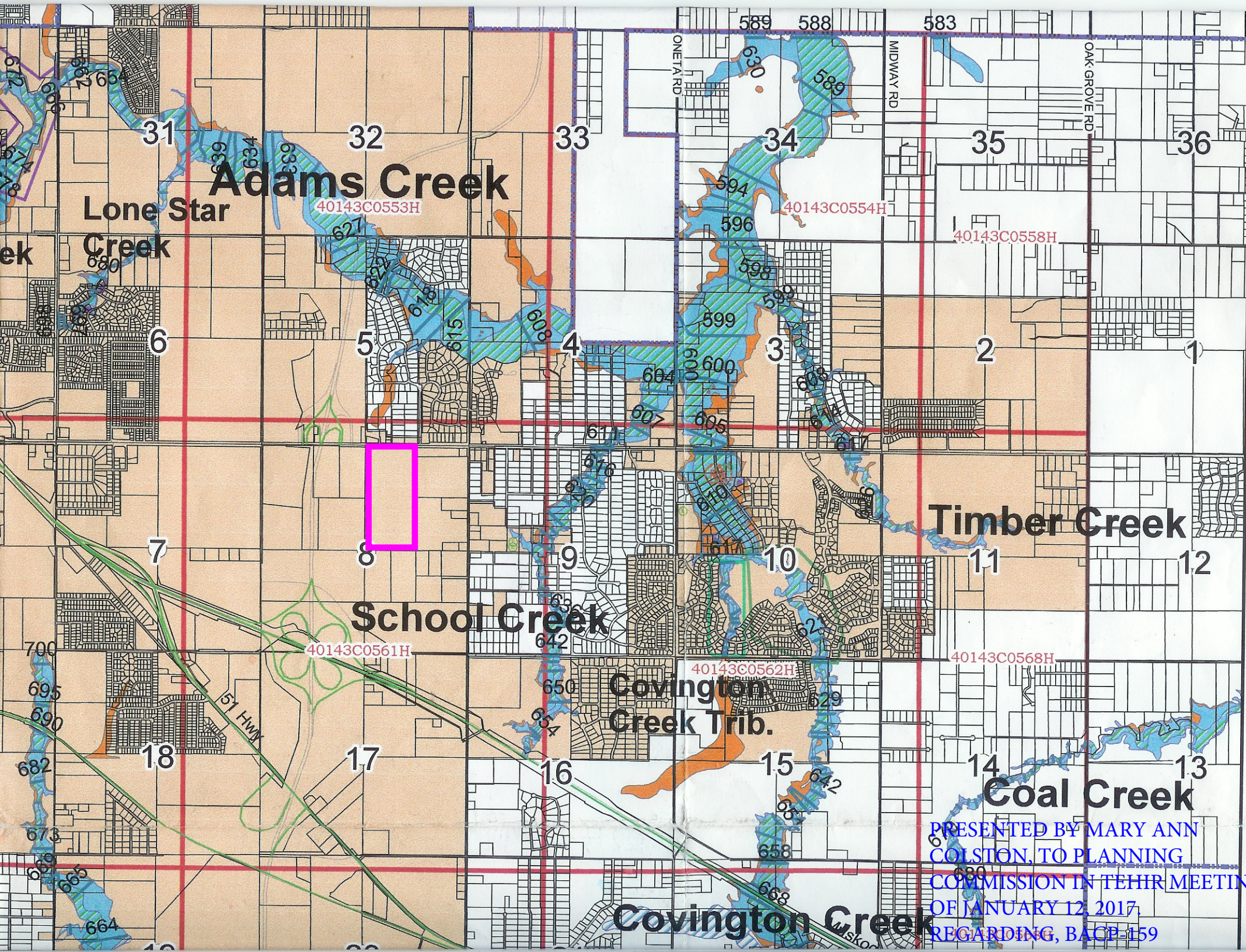
PRESENTED BY MARY ANN COLSTON, TO PLANNING COMMISSION IN TEHIR MEETING OF JANUARY 12, 2017. REGARDING, BACP-159

Exhibit C

# Muhich Tract

## Existing Conditions Plan





**Adams Creek**

**Lone Star Creek**

**Timber Creek**

**School Creek**

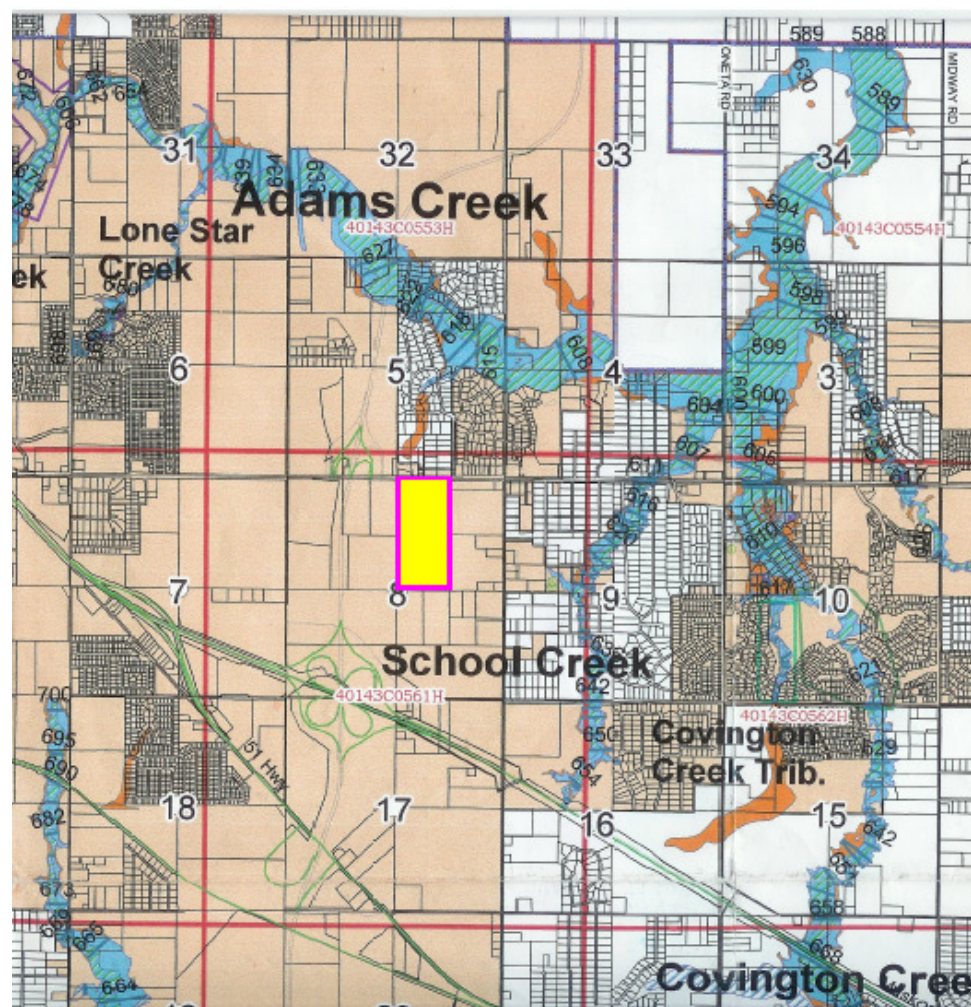
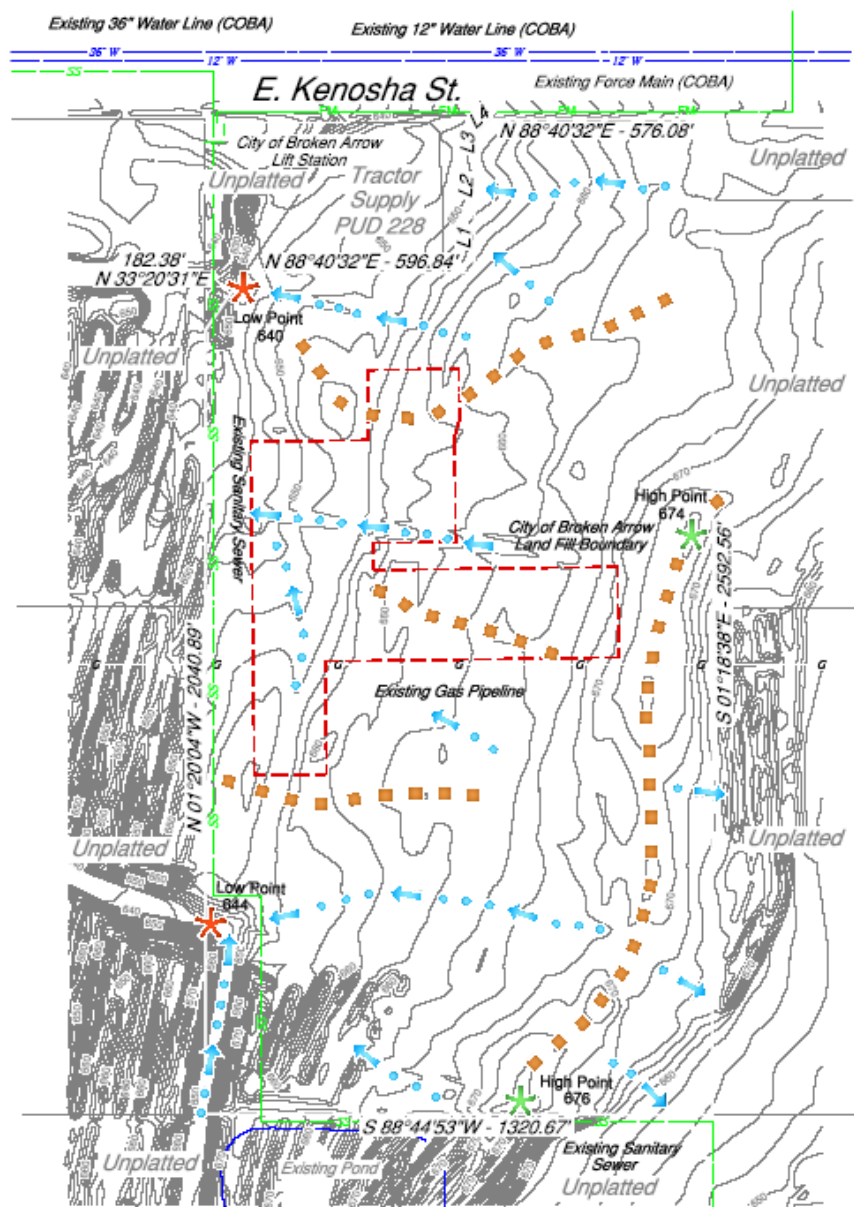
**Covington Creek Trib.**

**Coal Creek**

**Covington Creek**

PRESENTED BY MARY ANN COLSTON, TO PLANNING COMMISSION IN THEIR MEETING OF JANUARY 12, 2017, REGARDING, BACP-159





PRESENTED BY MARY ANN COLSTON, TO PLANNING COMMISSION IN THEIR MEETING OF JANUARY 12, 2017. REGARDING, BACP-159