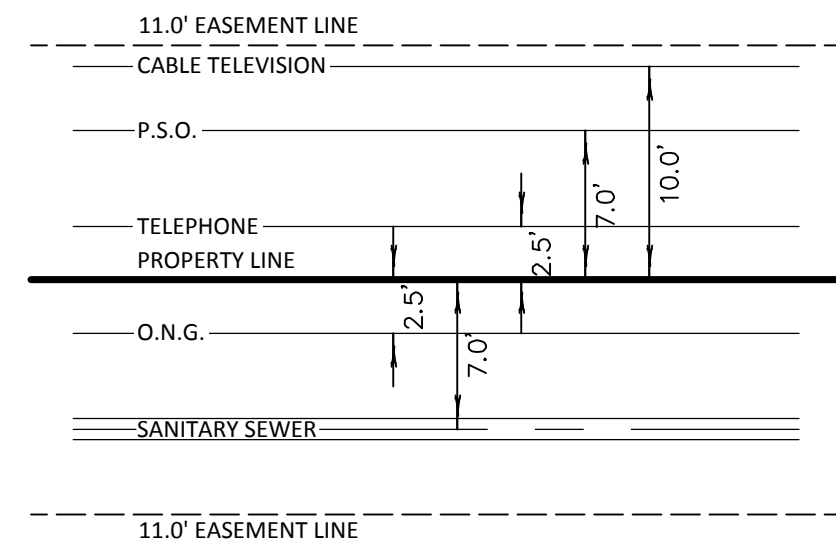


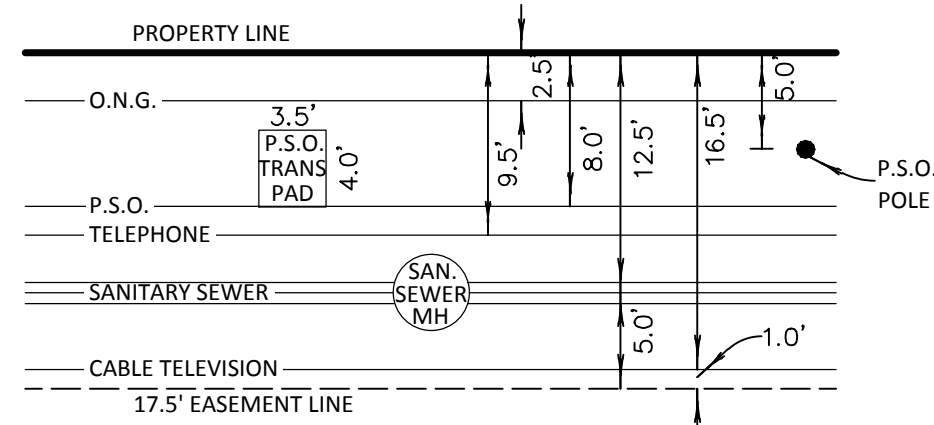
CONCEPTUAL UTILITY PLAN

Bentley Square

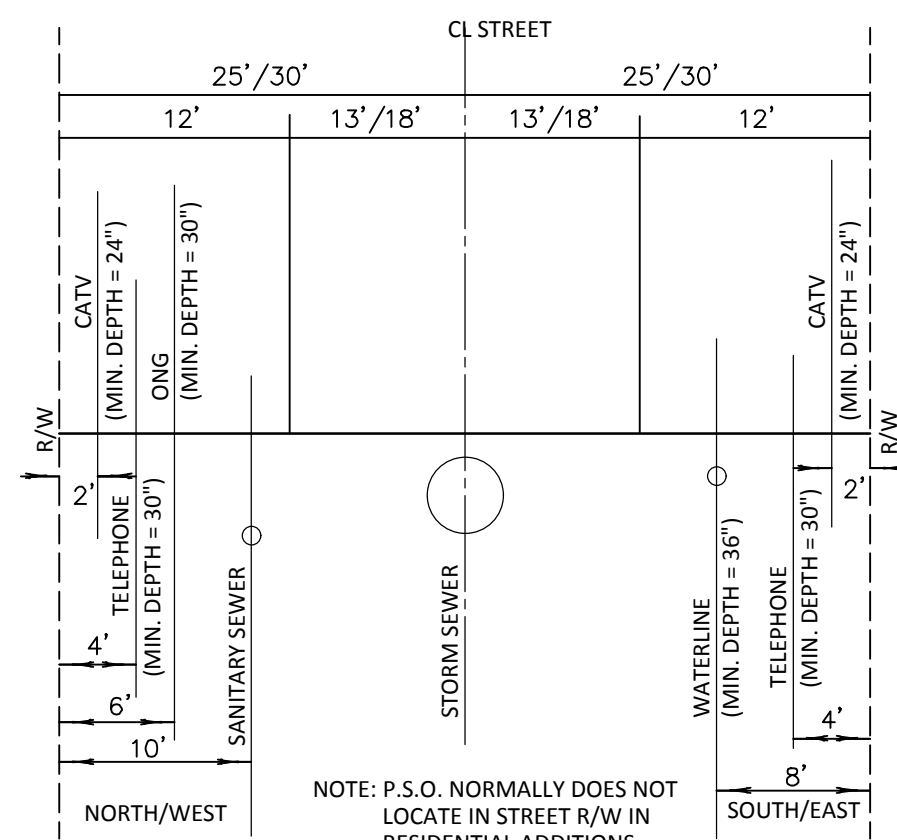
PART OF THE NORTHEAST QUARTER (NE/4) OF SECTION NINE (09)
TOWNSHIP SEVENTEEN (17) NORTH, RANGE FOURTEEN (14) EAST, OF THE INDIAN MERIDIAN
A SUBDIVISION WITHIN THE CITY OF BROKEN ARROW, TULSA COUNTY, STATE OF OKLAHOMA



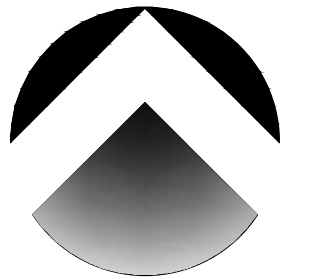
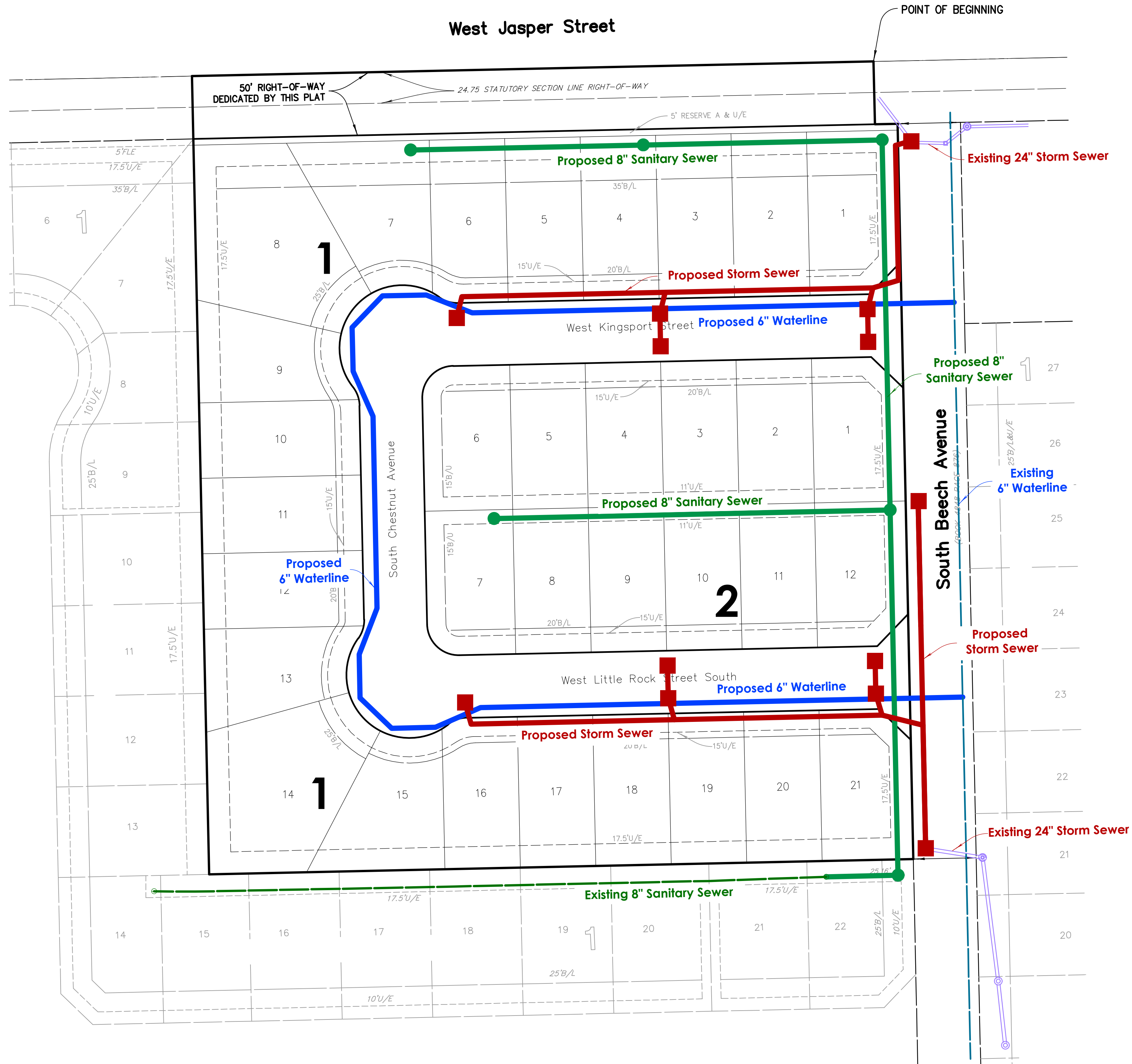
BACK TO BACK 11.0' EASEMENTS
STANDARD LOCATION OF UNDERGROUND UTILITIES



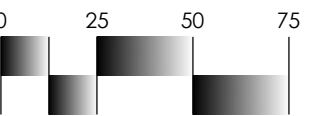
17.5' PERIMETER EASEMENT
STANDARD LOCATION OF UNDERGROUND UTILITIES



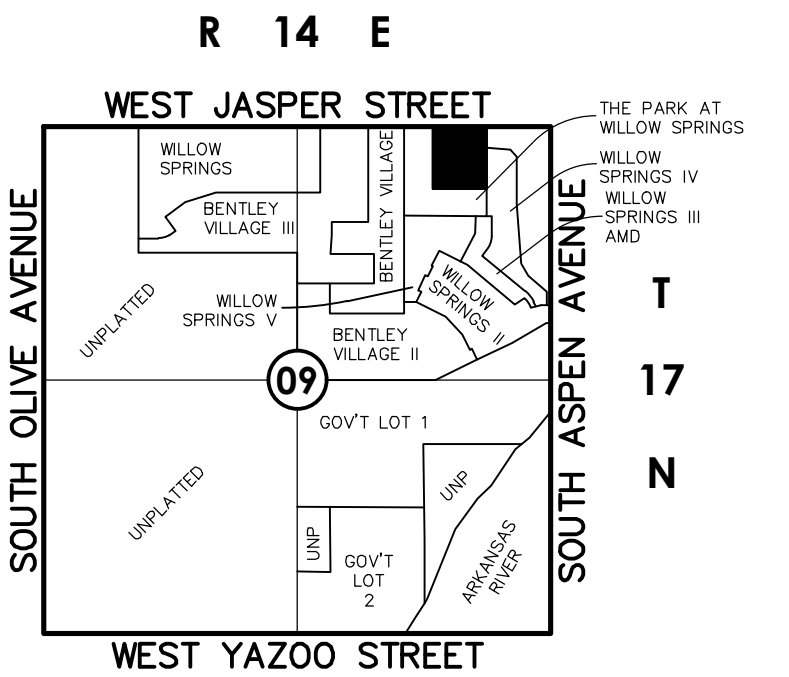
STANDARD LOCATION OF
UNDERGROUND UTILITY LINES FOR
RESIDENTIAL STREETS



NORTH



Scale: 1"= 50'
Tanner Consulting



Location Map

Scale: 1"= 2000'



SUBDIVISION CONTAINS:

THIRTY-THREE (33) LOTS
IN THREE (3) BLOCKS & ONE (1) RESERVE
GROSS SUBDIVISION AREA: 8.143 ACRES

SURVEYOR/ENGINEER:
Tanner Consulting, L.L.C.

DAN E. TANNER, P.L.S. NO. 1435
OK CA NO. 2661, EXPIRES 6/30/2017
5323 South Lewis Avenue
Tulsa, Oklahoma 74105
Phone: (918)745-9929

OWNER:
HHBG, LLC

CONTACT: DAVID GIBSON
1908 N. Willow Ave. Suite "A"
Broken Arrow, Oklahoma 74012
Phone: (918)252-2417