

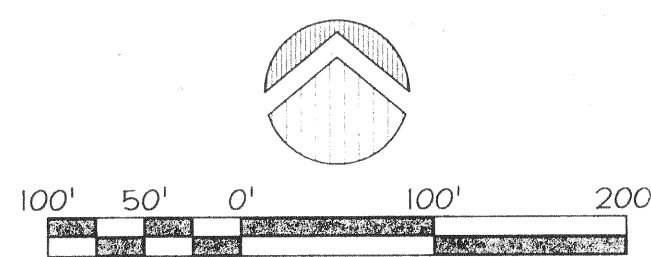
PLAT No.

6206

CURVE TABLE

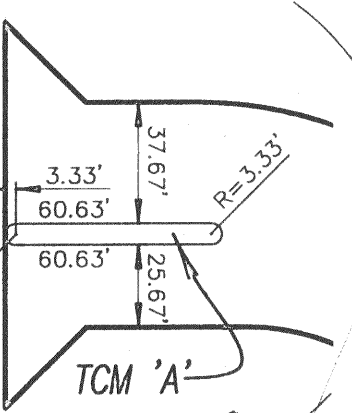
| NUMBER | DELTA ANGLE | RADIUS | ARC LENGTH |
|--------|-------------|---------|------------|
| C1 | 24°41'24" | 175.00' | 75.41' |
| C2 | 24°41'24" | 225.00' | 96.96' |
| C3 | 90°00'00" | 25.00' | 39.27' |
| C4 | 48°11'23" | 25.00' | 21.03' |
| C5 | 276°22'46" | 50.00' | 241.19' |
| C6 | 186°22'46" | 50.00' | 162.65' |

UNLESS OTHERWISE NOTED, CURVES SHOWN ARE TANGENT



SEE FLOOD PLAIN NOTE

Unplatted



TCM 'A'

Unplatted

Unplatted

Unplatted

Unplatted

Unplatted

Unplatted

Unplatted

Unplatted

Unplatted

Unplatted

Unplatted

Unplatted

Unplatted

Unplatted

Unplatted

Unplatted

Unplatted

Unplatted

Unplatted

Unplatted

Unplatted

Unplatted

Unplatted

Unplatted

Unplatted

Unplatted

Unplatted

Unplatted

Unplatted

Unplatted

Unplatted

Unplatted

Unplatted

Unplatted

Unplatted

Unplatted

Unplatted

Unplatted

Unplatted

Unplatted

Unplatted

Unplatted

Unplatted

Unplatted

Unplatted

Unplatted

Unplatted

Unplatted

Unplatted

Unplatted

Unplatted

Unplatted

Unplatted

Unplatted

ASPEN POND

AN ADDITION TO THE CITY OF BROKEN ARROW
BEING A SUBDIVISION OF THE NW/4 OF SECTION 22, TOWNSHIP 18 NORTH, RANGE 14 EAST,
TULSA COUNTY, OKLAHOMA

Unplatted

Unplatted
City of Broken Arrow

Sewer Line Easement
(Book 4107, Page 1312)

UE DOCUMENT
#2007125200

UE DOCUMENT
#2007125200

UE DOCUMENT
#2007125200

UE DOCUMENT
#2007125200

UE DOCUMENT
#2007125200

UE DOCUMENT
#2007125200

UE DOCUMENT
#2007125200

UE DOCUMENT
#2007125200

UE DOCUMENT
#2007125200

UE DOCUMENT
#2007125200

UE DOCUMENT
#2007125200

UE DOCUMENT
#2007125200

UE DOCUMENT
#2007125200

UE DOCUMENT
#2007125200

UE DOCUMENT
#2007125200

UE DOCUMENT
#2007125200

UE DOCUMENT
#2007125200

UE DOCUMENT
#2007125200

UE DOCUMENT
#2007125200

PROJECT DATA

OWNER

CHARLES SANDERS HOMES, INC.
107 SOUTH ASH AVENUE
BROKEN ARROW, OKLAHOMA 74012
918.455.1111

ENGINEER / SURVEYOR

COOK & ASSOCIATES ENGINEERING, INC.
121 EAST COLLEGE
BROKEN ARROW, OK 74012
918.258.9442 (VOICE) 918.258.9488 (FAX)
CA#4479 EXPIRES JUNE 30, 2008

MUNICIPAL AUTHORITY

CITY OF BROKEN ARROW
210 SOUTH 1st STREET
BROKEN ARROW, OK 74012
DAVID L. WOODEN, P.E., ASSISTANT CITY MANAGER
MICHAEL SKATES, COMMUNITY DEVELOPMENT DIRECTOR
TOM HENDRIX, P.E., ENGINEERING DIRECTOR
FARHAD DAROGA, PLANNING DIRECTOR

UTILITY CONTACTS

OKLAHOMA NATURAL GAS COMPANY
5848 EAST 15TH STREET
TULSA, OKLAHOMA 74112
918.831.8334
ATTN: JOHN KISKA

VALOR TELECOM COMPANY
2300 EAST 1st PLACE
BROKEN ARROW, OK 74012
918.451.3406
ATTN: ROY VARNER
918.451.3427
ATTN: ANGELA RAHE

AEP / PSO
212 EAST SIXTH STREET
TULSA, OK 74119
918.599.2912
ATTN: CURTIS BRYANT

COX COMMUNICATIONS
11811 EAST 51st STREET
TULSA, OK 74145
918.286.4658
ATTN: KEVIN CATLETT

SITE DATA

BENCHMARK

5/8" IRON PIN, LOCATED AT THE WEST
QUARTER CORNER OF SECTION 22,
TOWNSHIP 18 NORTH, RANGE 14 EAST,
TULSA COUNTY, OKLAHOMA
ELEVATION 679.57 (NAVD 1988)

BASIS OF BEARINGS

ASSUMED BEARING OF N 01°23'24" W
ALONG THE WEST LINE OF THE NW/4
OF SECTION 22, T-18-N, R-14-E OF
THE INDIAN BASE AND MERIDIAN, TULSA
COUNTY, STATE OF OKLAHOMA

LAND AREA

1,821,587.93 SF ± / 41.818 Acres ±

MONUMENTATION

A 3/8" X 18" DEFORMED BAR WITH AN
ORANGE PLASTIC CAP STAMPED "CA4479"
SET AT ALL LOT CORNERS,

A 5/8" X 18" DEFORMED BAR WITH AN
ORANGE PLASTIC CAP STAMPED "CA4479"
SET AT ALL BOUNDARY CORNERS.

ADDRESSES

ADDRESSES SHOWN ON THIS PLAT WERE
ACCURATE AT THE TIME THIS PLAT WAS
FILED. ADDRESSES ARE SUBJECT TO CHANGE
AND SHOULD NEVER BE RELIED ON IN
PLACE OF LEGAL DESCRIPTION.

DETENTION NOTE

STORMWATER DETENTION ACCOMMODATIONS FOR THIS SITE ARE IN ACCORDANCE WITH
FEE-IN-LIEU OF DETENTION DETERMINATION # DD-51807-26

WATER AND SEWER

POTABLE WATER SUPPLY WILL BE SERVED BY THE CITY
OF BROKEN ARROW, OKLAHOMA.

SANITARY SEWER SERVICE WILL BE SUPPLIED BY THE
CITY OF BROKEN ARROW, OKLAHOMA.

FLOOD PLAIN NOTE

--- FEMA FLOOD PLAIN ZONE AE
ADJUSTED TO RECENT
TOPOGRAPHIC DATA.

FEMA FLOOD PLAIN DATA PER FLOOD
INSURANCE RATE MAP PANEL 543 OF
725, MAP NUMBER 40143C0543 J,
REVISED APRIL 16, 2003.

STATE OF OKLAHOMA COUNTY OF TULSA

I, Earlene Wilson, Tulsa County Clerk, in and for the
County and State above named, do hereby certify that
the foregoing is a true and correct copy of a like instrument
now on file in my office.

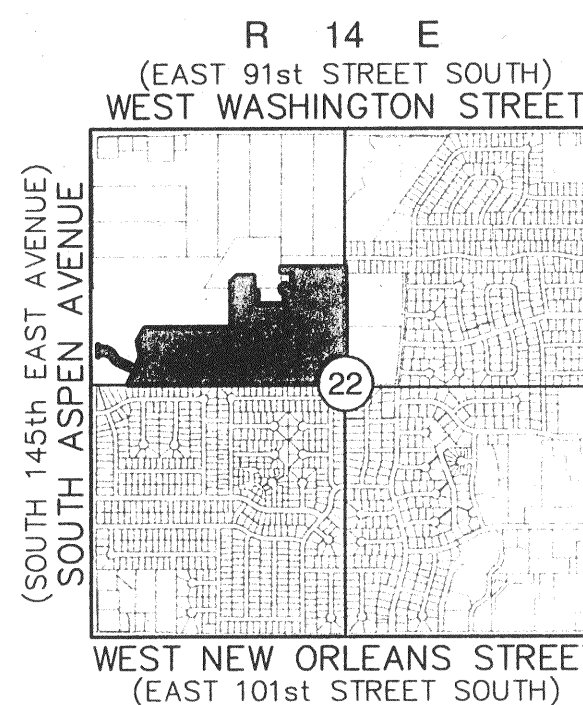
Dated the 1st day of Dec, 2006
EARLENE WILSON, Tulsa County Clerk
Deputy

CERTIFICATE

I certify that all real estate taxes involved in this plat have
been paid as reflected by the current tax rolls. Security as required
has been provided in the amount of \$
Receipt no. _____ to be applied to 20____ taxes.
This certificate is NOT to be construed as payment of 20____ taxes.
This plat is given in order that this plat may be filed on record
and taxes could exceed the amount of the security deposit.

Dated _____, 20____
Dennis Semler
Tulsa County Treasurer
by _____ Deputy

ASPEN POND
DIV. #05129 / CASE NO. P106125
Sheet 1 of 3
Date Prepared: 2/20/08



Location Map

Subdivision Contains One-Hundred
Eighty (180) Lots in Seven (7) Blocks
1,821,587.93 SF ± / 41.818 Acres ±