

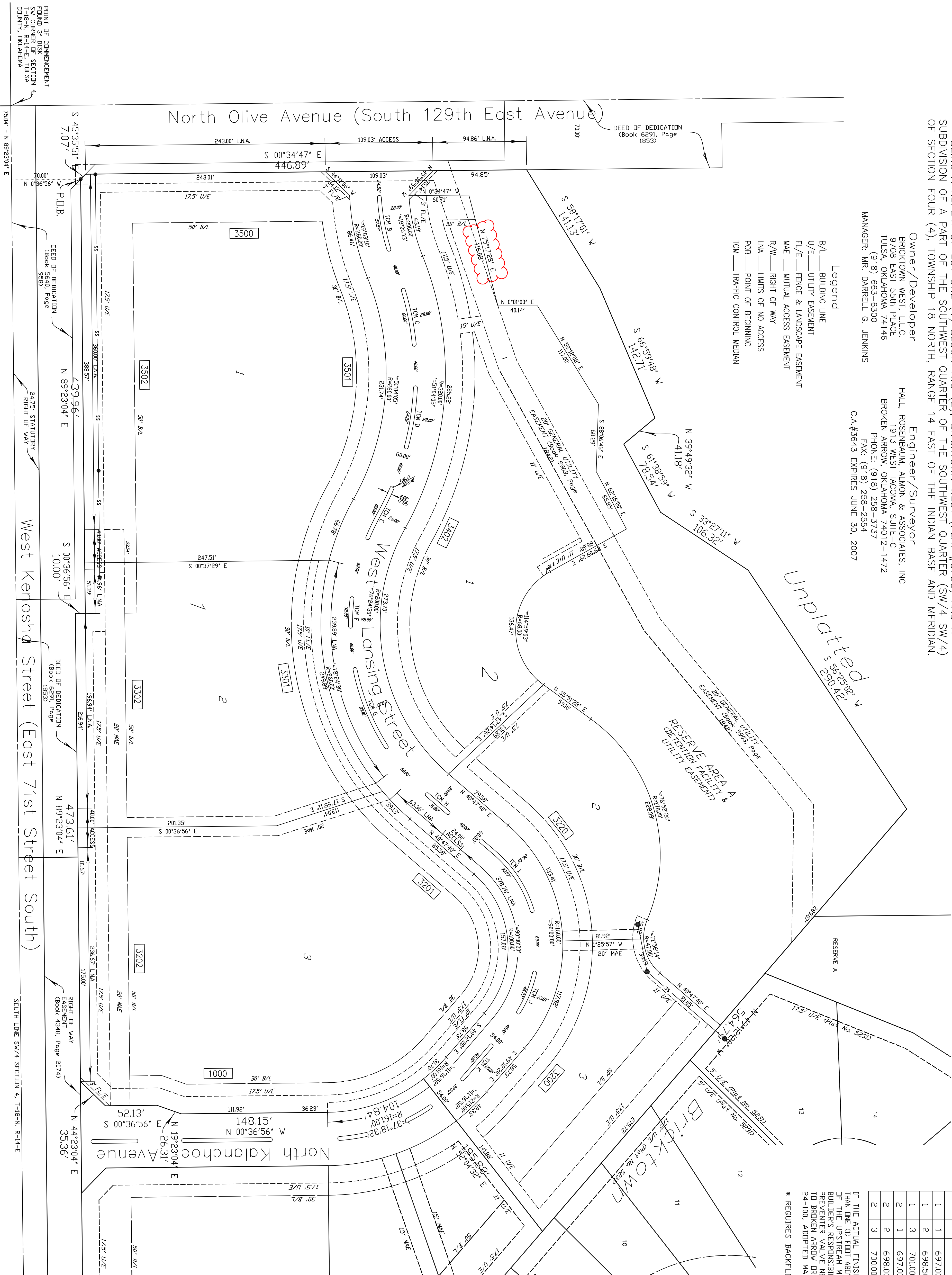
P.U.D. 161
Bricktown West Extended

A SUBDIVISION IN THE CITY OF BROKEN ARROW, TULSA COUNTY, OKLAHOMA
BEING A REPLAT OF LOT ONE (1) BLOCK TWO (2), BRICKTOWN WEST (PLAT #5796) AND A
SUBDIVISION OF A PART OF THE SOUTHWEST QUARTER OF THE SOUTHWEST QUARTER (SW/4 SW/4)
OF SECTION FOUR (4), TOWNSHIP 18 NORTH, RANGE 14 EAST OF THE INDIAN BASE AND MERIDIAN.

Owner/Developer
BRICKTOWN WEST, L.L.C.
9708 EAST 55th PLACE
TULSA, OKLAHOMA 74146
(918) 663-6300
MANAGER: MR. DARRELL G. JENKINS

Engineer/Surveyor
HALL, ROSENBAUM, ALMON & ASSOCIATES, INC
1913 WEST TACOMA, SUITE-C
BROKEN ARROW, OKLAHOMA 74012-1472
PHONE: (918) 258-3737
FAX: (918) 258-2554
C.A.#3643 EXPIRES JUNE 30, 2007

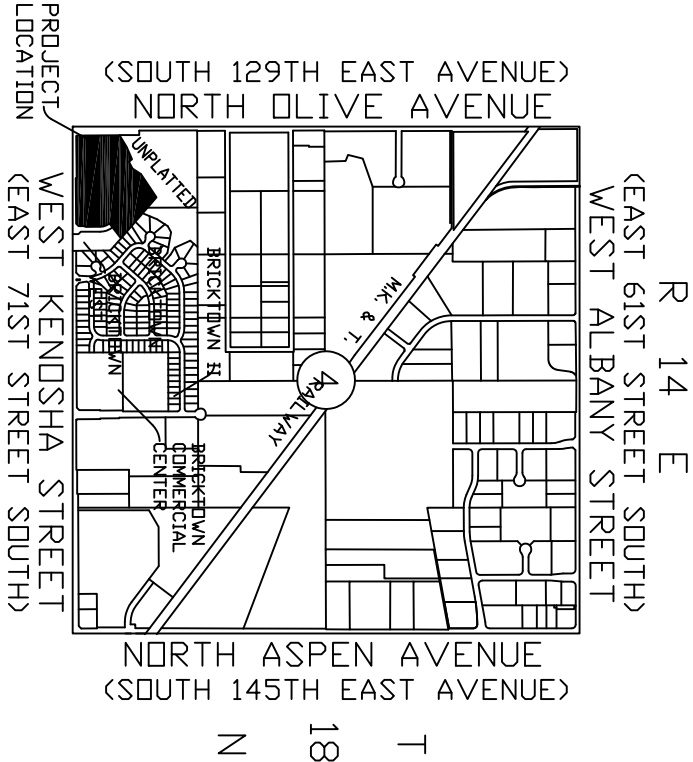
- Legend
- B/L — BUILDING LINE
 - U/E — UTILITY EASEMENT
 - F/E — FENCE & LANDSCAPE EASEMENT
 - MAE — MUTUAL ACCESS EASEMENT
 - R/W — RIGHT OF WAY
 - LMA — LIMITS OF NO ACCESS
 - POB — POINT OF BEGINNING
 - TOM — TRAFFIC CONTROL MEDIAN



Backflow Preventer Valve Table		Lot		Valve		Table	
BLOCK	LOT'S FINISH FLOOR ELEVATION	UPSTREAM MANHOLE	TOP OF RIM ELEVATION	LOT	VALVE	TABLE	TABLE
1	1	697.00	C	685.37			
1	2	698.50	S	696.75			
1	3	701.00	A	699.58			
2	1	697.00	D	692.40			
2	2	698.00	LH-6	695.95			
2	3	700.00	2	696.14			

IF THE ACTUAL FINISH FLOOR ELEVATION IS LOWER THAN ONE (1) FOOT ABOVE THE TOP OF RIM ELEVATION OF THE UPSTREAM MANHOLE, IT SHALL BE THE BUILDER'S RESPONSIBILITY TO INSTALL A BACKFLOW PREVENTER VALVE NEAR THE BUILDING ACCORDING TO BROKEN ARROW ORDINANCE NO. 1777, SECTION 24-100, ADOPTED MAY 17, 1993.

* REQUIRES BACKFLOW PREVENTER VALVE.



Location Map

SCALE: 1"=200'
Subdivision Containing Six (6) Lots
in Two (2) Blocks
Block 1 contains 3 lots
Block 2 contains 3 lots
630,835.83 SF / 14.48 Acres

Scale: 1"=50'
0 25 50 100



Basis of Bearing
PLATTED BEARING OF S 89°23'04" W
ALONG THE SOUTH LINE OF "BRICKTOWN"
AN ADDITION TO THE CITY OF BROKEN
ARROW, TULSA COUNTY, STATE OF
OKLAHOMA (PLAT NO. 5231)

Benchmark
ADS 3" ALUMINUM CAP-FLUSH-SET IN
CONCRETE POST-STAMPED "BAS-8", SET
ON THE NORTH SIDE OF ALBANY AND
EAST END OF EXPRESSWAY OVERPASS
ELEVATION = 776.99 (NGVD 1929)

Notes
ADDRESSES SHOWN ON THIS PLAT WERE
ACCURATE AT THE TIME THIS PLAT WAS
FILED. ADDRESSES ARE SUBJECT TO
CHANGE AND SHOULD NEVER BE RELIED
ON IN PLACE OF LEGAL DESCRIPTION.

ALL WATER AND SANITARY SEWER
SERVICES WILL BE SUPPLIED AND
MAINTAINED BY THE CITY OF BROKEN
ARROW.

Monumentation
ALL CORNERS SHOWN HEREON WERE
SET USING A 3/8"x 18" STEEL PIN WITH
A PLASTIC CAP STAMPED "PLS 1283" AT
ALL CORNERS.

APPROVED _____ by the City
County of Tulsa
I, Earlene Wilson, Tulsa County Clerk, in and for the
County and State above named, do hereby certify that
the foregoing is a true and correct copy of a file instrument
now on file in my office.

Mayor _____
Attest: City Clerk _____

Dated the _____ day of _____, 20____
EARLENE WILSON, Tulsa County Clerk
Deputy _____

Tulsa County Treasurer