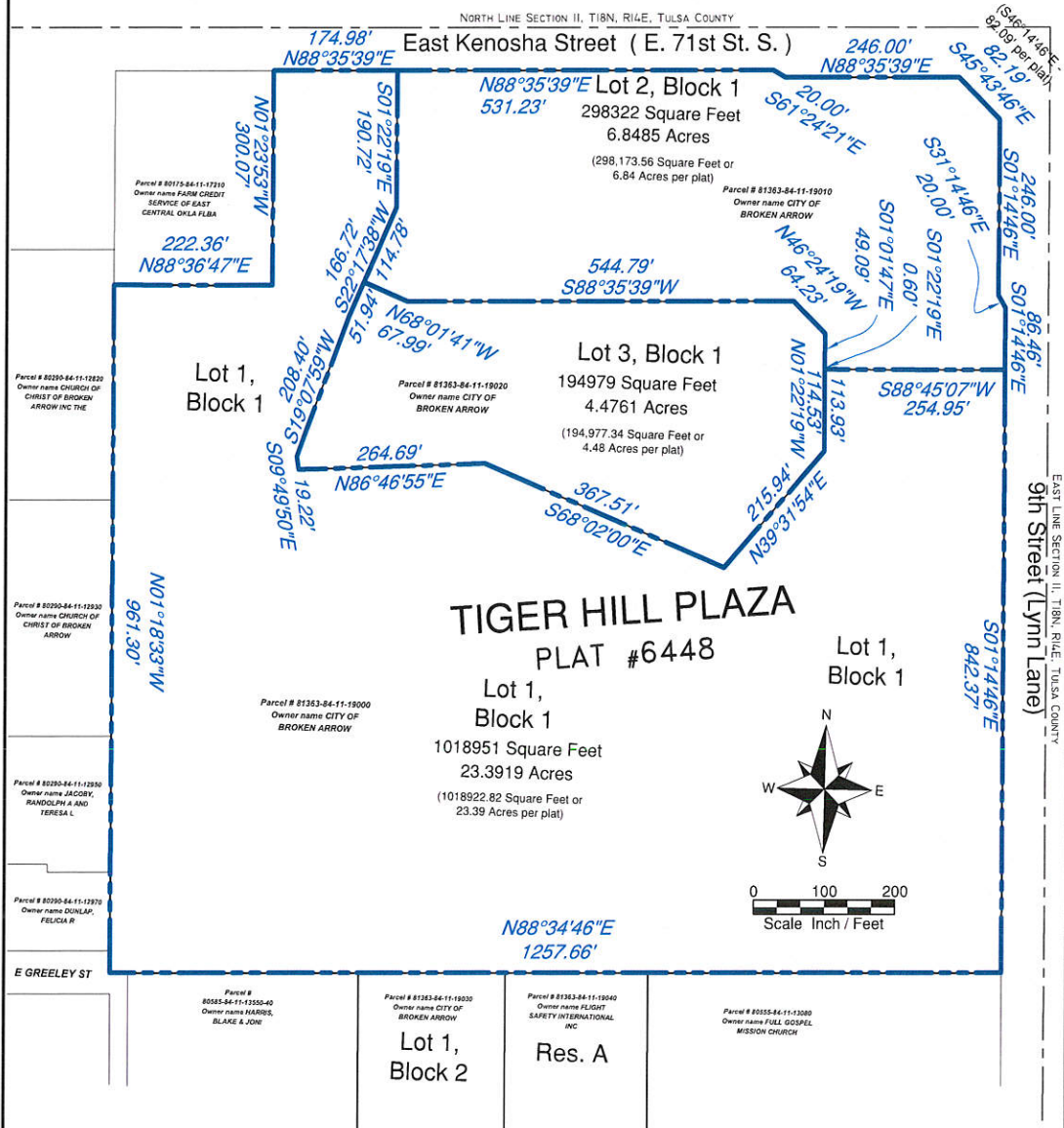
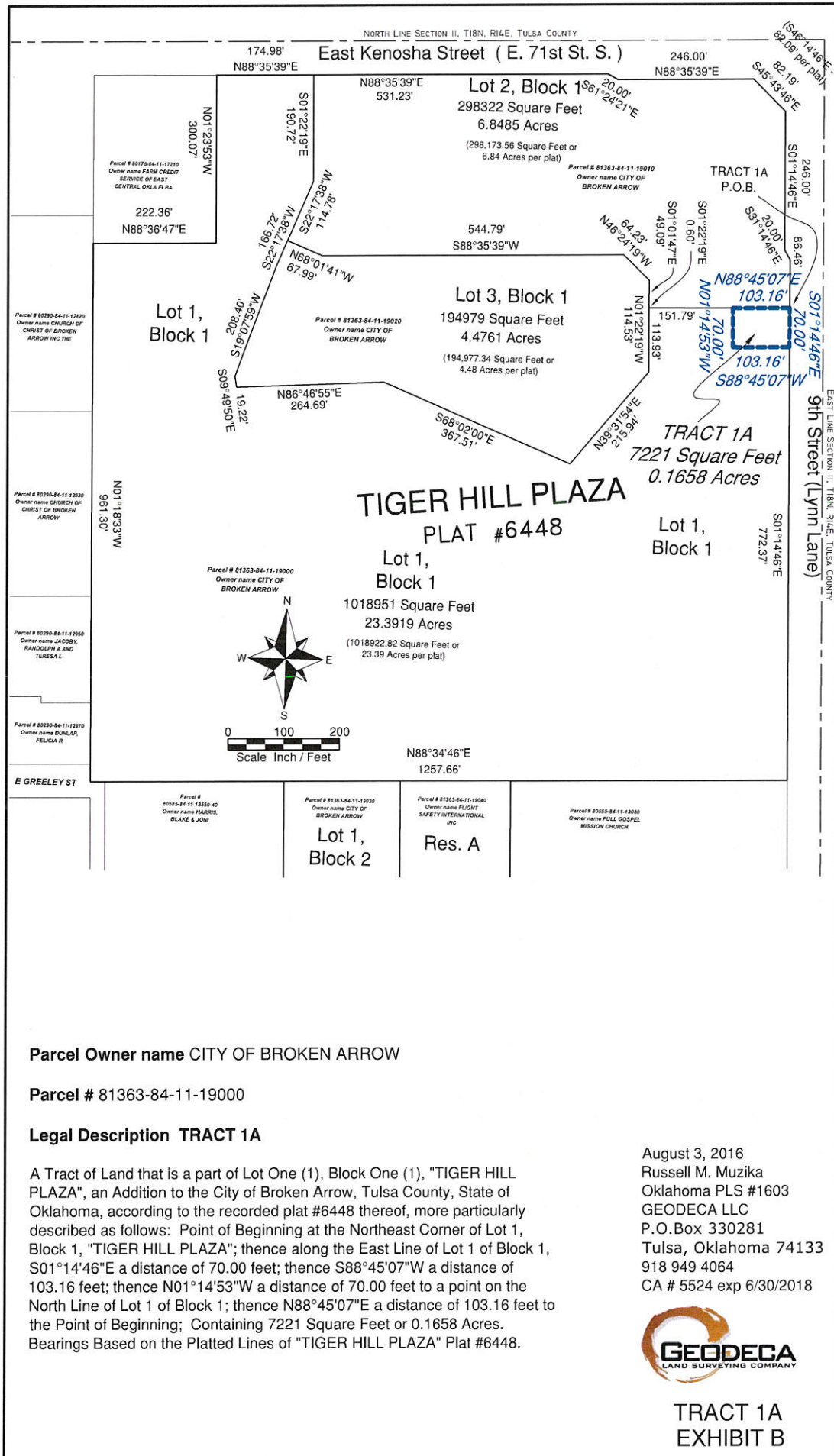
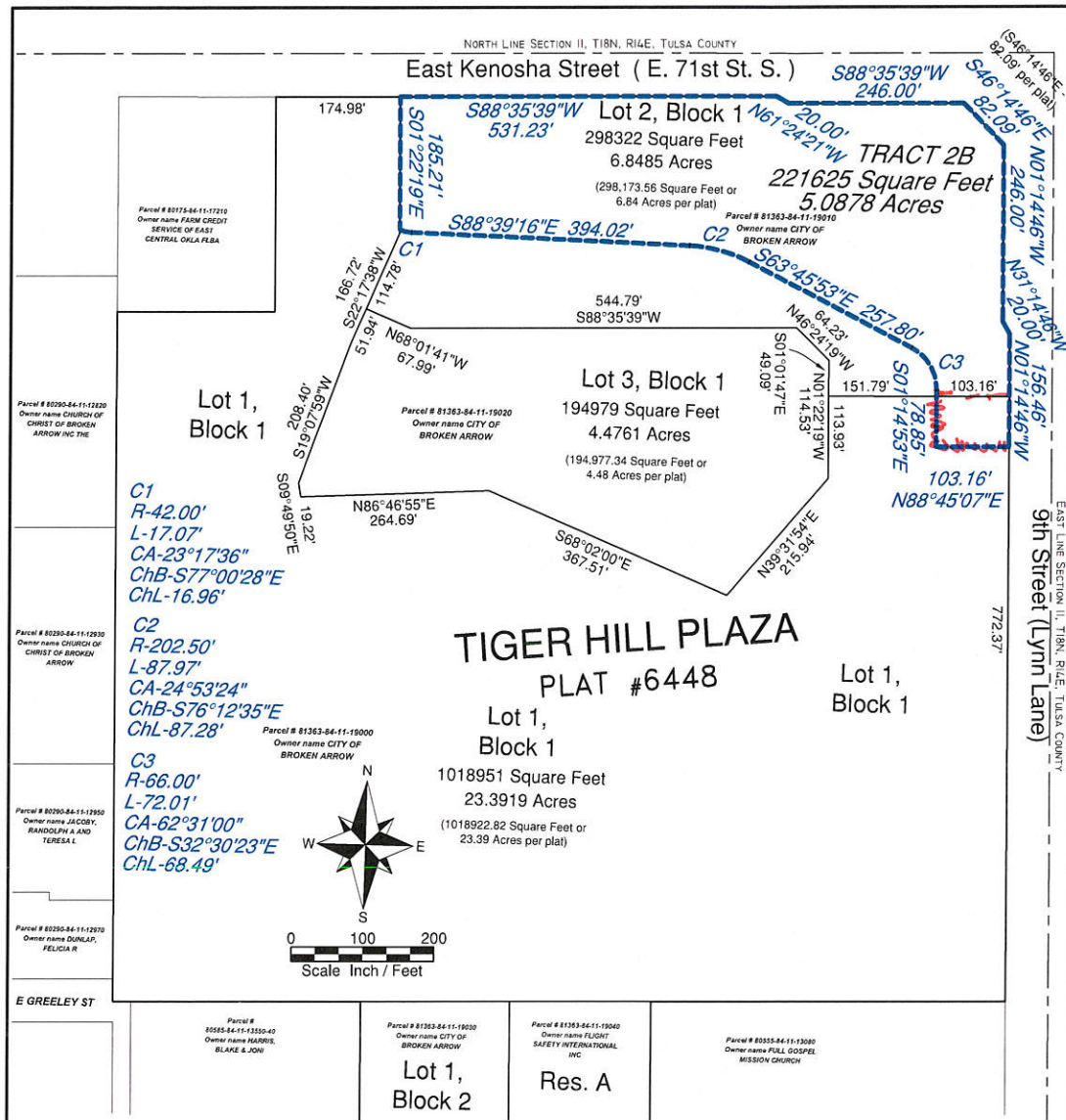


UNDIVIDED TRACTS







Undivided Parcel Owner name CITY OF BROKEN ARROW

Undivided Parcel # 81363-84-11-(19000)(19010)

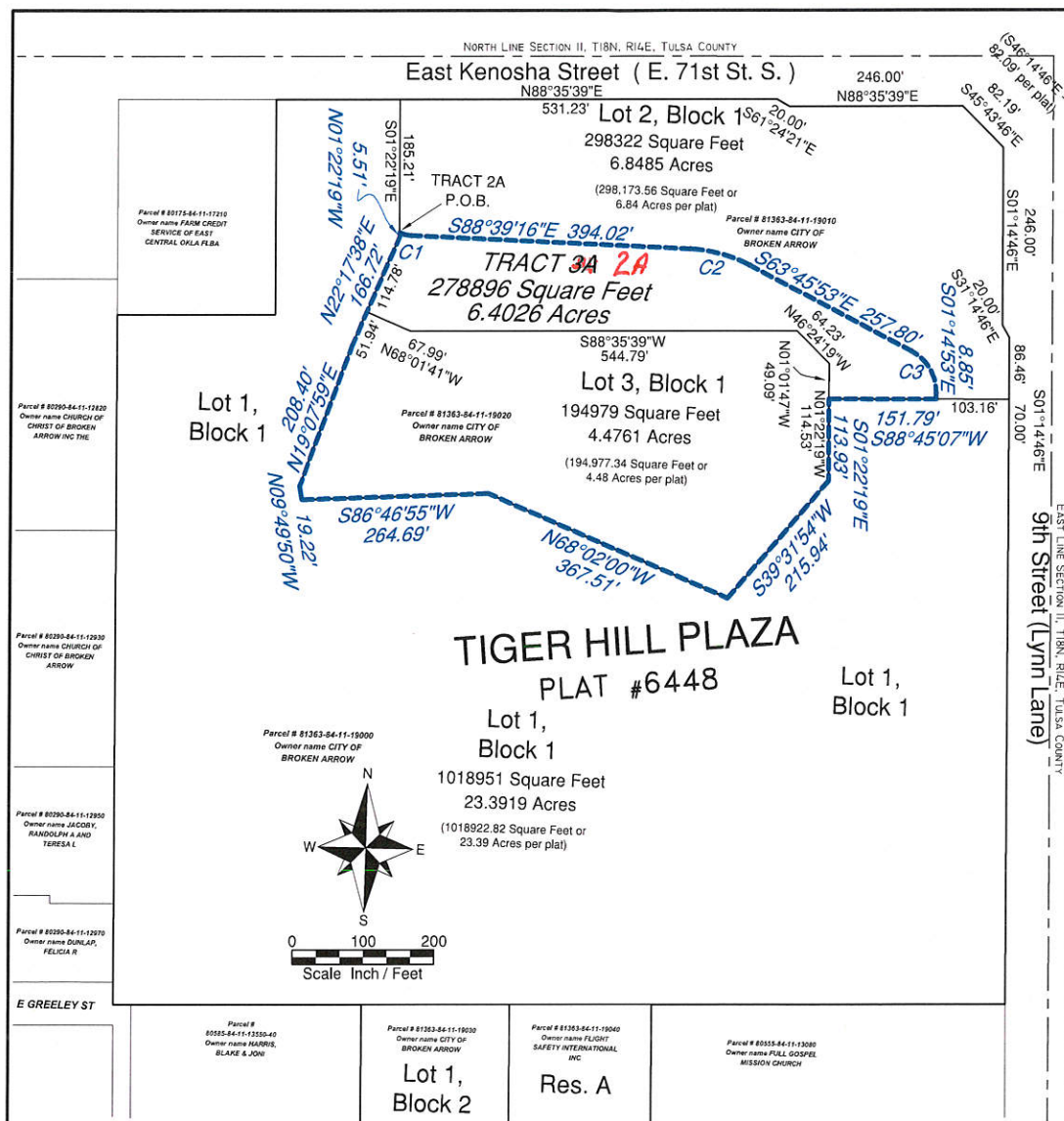
Legal Description TRACT 2B

A Tract of Land that is a part of Lot One (1) and Lot Two (2), Block One (1), "TIGER HILL PLAZA", an Addition to the City of Broken Arrow, Tulsa County, State of Oklahoma, according to the recorded plat #6448 thereof, more particularly described as follows: Beginning at a Point that is the Northwest Corner of Lot 2, Block 1, "TIGER HILL PLAZA", thence along the West Line of said Lot 2, S01°22'19"E a distance of 185.21 feet; thence with a curve to the left having a radius of 42.00 feet, an arc length of 17.07 feet, a central angle of 23°17'36", a chord bearing of S77°00'28"E, and a chord length of 16.96 feet; thence S88°39'16"E a distance of 394.02 feet; thence with a curve to the right having a radius of 202.50 feet, an arc length of 87.97 feet, a central angle of 24°53'24", a chord bearing of S76°12'35"E, and a chord length of 87.28 feet; thence S63°45'53"E a distance of 257.80 feet; thence with a curve to the right having a radius of 66.00 feet, an arc length of 72.01 feet, a central angle of 62°31'00", a chord bearing of S32°30'23"E, and a chord length of 68.49 feet; thence S01°14'53"E a distance of 78.85 feet; thence N88°45'07"E a distance of 103.16 feet to a point on the East Line of Lot 1, Block 1; thence N01°14'46"W a distance of 156.46 feet; thence N31°14'46"W a distance of 20.00 feet; thence N01°14'46"W a distance of 246.00 feet; thence N45°43'46"W a distance of 82.19 feet; thence S88°35'39"W a distance of 246.00 feet; thence N61°24'21"W a distance of 20.00 feet; thence S88°35'39"W a distance of 531.23 feet to the Point of Beginning. Having an area of 221625 Square Feet or 5.0878 Acres. Bearings based on the platted lines of "TIGER HILL PLAZA".

August 3, 2016
 Russell M. Muzika
 Oklahoma PLS #1603
 GEODECA LLC
 P.O. Box 330281
 Tulsa, Oklahoma 74133
 918 949 4064
 CA # 5524 exp 6/30/2018



TRACT 2B
EXHIBIT E



Undivided Parcel Owner name CITY OF BROKEN ARROW

Undivided Parcel # 81363-84-11-(19020)(19010)

Legal Description ~~TRACT 3A~~ **TRACT 2A COMBINED WITH LOT 3**

A Tract of Land that is Lot Three (3) of Block One (1), together with a part of Lot Two (2), Block One (1), "TIGER HILL PLAZA", an Addition to the City of Broken Arrow, Tulsa County, State of Oklahoma, according to the recorded plat #6448 thereof more particularly described as follows: Beginning at a Point on the West Line of Lot 2 of Block 1, "TIGER HILL PLAZA" that is 185.21 feet from the Northwest Corner of said Lot 2; thence with a curve to the left having a radius of 42.00 feet, an arc length of 17.07 feet, a central angle of 23°17'36", a chord bearing of S77°00'28"E, and a chord length of 16.96 feet; thence S88°39'16"E a distance of 394.02 feet; thence with a curve to the right having a radius of 202.50 feet, an arc length of 87.97 feet, a central angle of 24°53'24", a chord bearing of S76°12'35"E, and a chord length of 87.28 feet; thence S63°45'53"E a distance of 257.80 feet; thence with a curve to the right having a radius of 66.00 feet, an arc length of 72.01 feet, a central angle of 62°31'00", a chord bearing of S32°30'23"E, and a chord length of 68.49 feet; thence S01°14'53"E a distance of 8.85 feet to a Point on the South Line of Lot 2 of Block 1, "TIGER HILL PLAZA" that is 103.16 feet from the Southeast Corner of said Lot 2; thence S88°45'07"W a distance of 151.79 feet; thence S01°22'19"E a distance of 113.93 feet; thence S39°31'54"W a distance of 215.94 feet; thence N68°02'00"W a distance of 367.51 feet; thence S86°46'55"W a distance of 264.69 feet; thence N09°49'50"W a distance of 19.22 feet; thence N19°07'59"E a distance of 208.40 feet; thence N22°17'38"E a distance of 166.72 feet; thence N01°22'19"W a distance of 5.51 feet to the Point of Beginning. Having an area of 278896 square feet or 6.4026 acres. Bearings based on the platted lines of "TIGER HILL PLAZA".

August 3, 2016
Russell M. Muzika
Oklahoma PLS #1603
GEODECA LLC
P.O.Box 330281
Tulsa, Oklahoma 74133
918 949 4064
CA # 5524 exp 6/30/2018



TRACT 3A
EXHIBIT F G