

EAST HILLSIDE DRIVE

NORTHEAST CROSSROADS

LOT 1 BLOCK 2

± 12.10 AC.

**LOT 1
BLOCK 2
(Less and Except)
± 9.1635 AC.**

**LOT 1A
BLOCK 2
± 2.9365 AC.
(± 127,914 sft)**

$\Delta = 43^{\circ}17'17''$
 $R = 460.00'$
 $L = 347.54'$
 ChBearing = S 20°18'02" W
 ChLength = 339.33'

$\Delta = 25^{\circ}08'08''$
 $R = 1040.00'$
 $L = 456.25'$
 ChBearing = S 29°22'36" W
 ChLength = 452.60'

$\Delta = 28^{\circ}34'46''$
 $R = 1040.00'$
 $L = 518.76'$

Note:
 Refer Recorded Plat of the
 NORTHEAST CROSSROADS
 (Plat No. PLC4-335 A) for
 Description of the Utility
 Easements, Right of Way,
 Roadway Centerline and
 other Information not Shown
 here for Clarity.

LEGEND

- D/E Drainage Easement
- U/E Utility Easement
- SS/E Sanitary Sewer Easement
- MAE Mutual Access Easement
- S.S. Sanitary Sewer
- W.L. Waterline

**EXHIBIT A (2 of 2)
 PLOT PLAN
 LOT SPLIT OF LOT 1, BLOCK 2
 NORTHEAST CROSSROADS
 BROKEN ARROW, WAGONER COUNTY,
 OKLAHOMA**

P.O.B. LOT 1,
 BLOCK 2
 (LESS AND
 EXCEPT)

P.O.C. and P.O.B. LOT 1A
 Southwest Corner of Lot
 One (1), Block Two (2),
 NORTHEAST CROSSROADS,
 an Addition to the City of
 Broken Arrow, Wagoner
 County, State of Oklahoma,
 according to the United
 States Government Survey
 thereof.

NOT INCLUDED

**LOT 2
BLOCK 2**

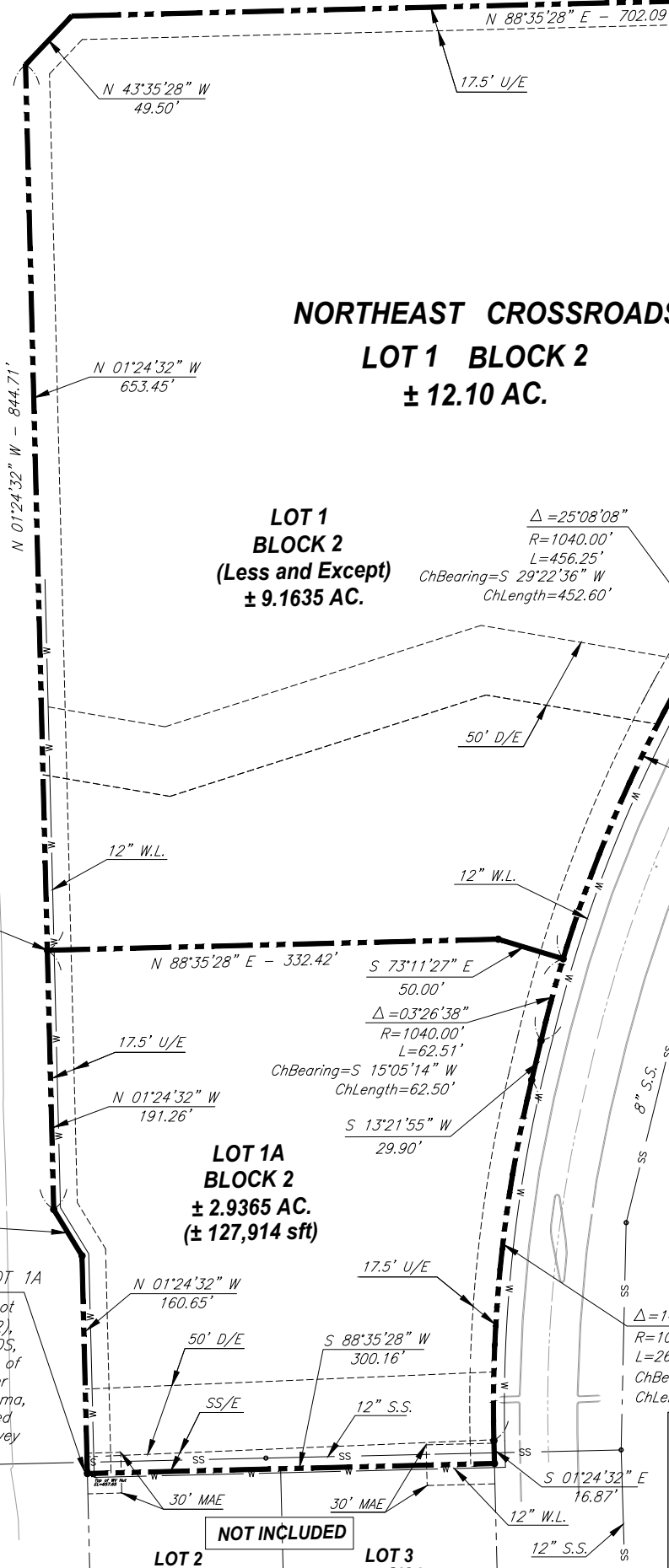
**LOT 3
BLOCK 2**

NOT TO SCALE

254 Other Station #
 10/10/2010
 10:44:22
 10/10/2010
 10:44:22

NORTH 37th STREET

NORTH 38th STREET



N 88°35'28" E - 702.09'

N 43°35'28" W 49.50'

17.5' U/E

N 01°24'32" W 653.45'

N 01°24'32" W - 844.71'

N 88°35'28" E - 332.42'

S 73°11'27" E 50.00'

$\Delta = 03^{\circ}26'38''$
 $R = 1040.00'$
 $L = 62.51'$
 ChBearing = S 15°05'14" W
 ChLength = 62.50'

17.5' U/E

N 01°24'32" W 191.26'

S 13°21'55" W 29.90'

N 31°24'32" W 40.00'

N 01°24'32" W 160.65'

50' D/E

SS/E

12" S.S.

30' MAE

30' MAE

12" W.L.

12" S.S.

17.5' U/E

$\Delta = 14^{\circ}46'27''$
 $R = 1040.00'$
 $L = 268.17'$
 ChBearing = S 05°57'54" W
 ChLength = 267.43'

S 01°24'32" E 16.87'

12" W.L.

12" S.S.