

**EXHIBIT "A.1"**  
**Immanuel Luthern Church**  
**Detention and Drainage Easement**

**LEGAL DESCRIPTION**

A tract of land in the Northwest Quarter of the Southeast Quarter (NW/4 SE/4) of Section 9, Township 18 North, Range 14 East of the Indian Base and Meridian in the City of Broken Arrow, Tulsa County, State of Oklahoma, and more particularly described as follows, to wit:

Commencing at a point 60.00 feet West of the Southeast corner of the N/2 SE/4 NE/4 of Section 9, Township 18 North, Range 14 East, of the Indian Base and Meridian, said point being the Southeast corner of CHRISTIAN HEIGHTS ADDITION to the City of Broken Arrow according to the recorded plat, Number 5032, thereof; Thence S88°34'46"W along the South line of said CHRISTIAN HEIGHTS a distance of 356.32 feet to the POINT OF BEGINNING; Thence S88°34'46"W along said South Line a distance of 559.72 feet; Thence along a curve to the left with a radius of 25.00 feet, arc distance of 40.68 feet, chord length of 36.34 feet and chord bearing of S41°57'58"W; Thence S04°38'51"E a distance of 299.45 feet; Thence along a curve to the left with a radius of 250.00 feet, arc distance of 18.06 feet, chord length of 18.06 feet and chord bearing of S06°43'03"E; Thence S08°47'15"E a distance of 26.44 feet; Thence along a curve to the left with a radius of 50.00 feet, arc distance of 38.44 feet, chord length of 37.50 feet and chord bearing of S30°48'41"E; Thence S52°50'08"E a distance of 13.38 feet; Thence S59°21'14"E a distance of 23.02 feet; Thence along a curve to the right with a radius of 40.67 feet, arc distance of 64.39 feet, chord length of 57.87 feet and chord bearing of N82°09'10"E; Thence along a curve to the left having a radius of 85.00 feet, arc distance of 57.85 feet, chord length of 56.74 feet and chord bearing of S71°59'28"E; Thence N88°30'38"E a distance of 32.33 feet; Thence N04°47'40"E a distance of 84.94 feet; Thence N36°01'17"E a distance of 119.22 feet; Thence N61°13'42"E a distance of 63.83 feet; Thence N52°47'39"E a distance of 155.64 feet; Thence N42°00'59"E a distance of 34.50 feet; Thence N26°37'56"E a distance of 34.25 feet; Thence N00°13'09"E a distance of 55.37 feet; Thence N67°27'02"E a distance of 69.70 feet to the POINT OF BEGINNING, and containing 152,400.75 square feet, or 3.50 Acres, more or less;

The bearings shown herein are based on the Oklahoma State Plane Coordinate System (3501), and any recorded bearings have been rotated to this System.

**REAL PROPERTY CERTIFICATION**

I, Tom A. Haynes, L.S. 1052, certify that the above tract description closes in accord with existing records and is a true representation of the real property as described.

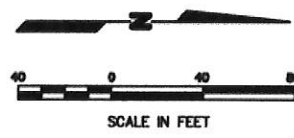
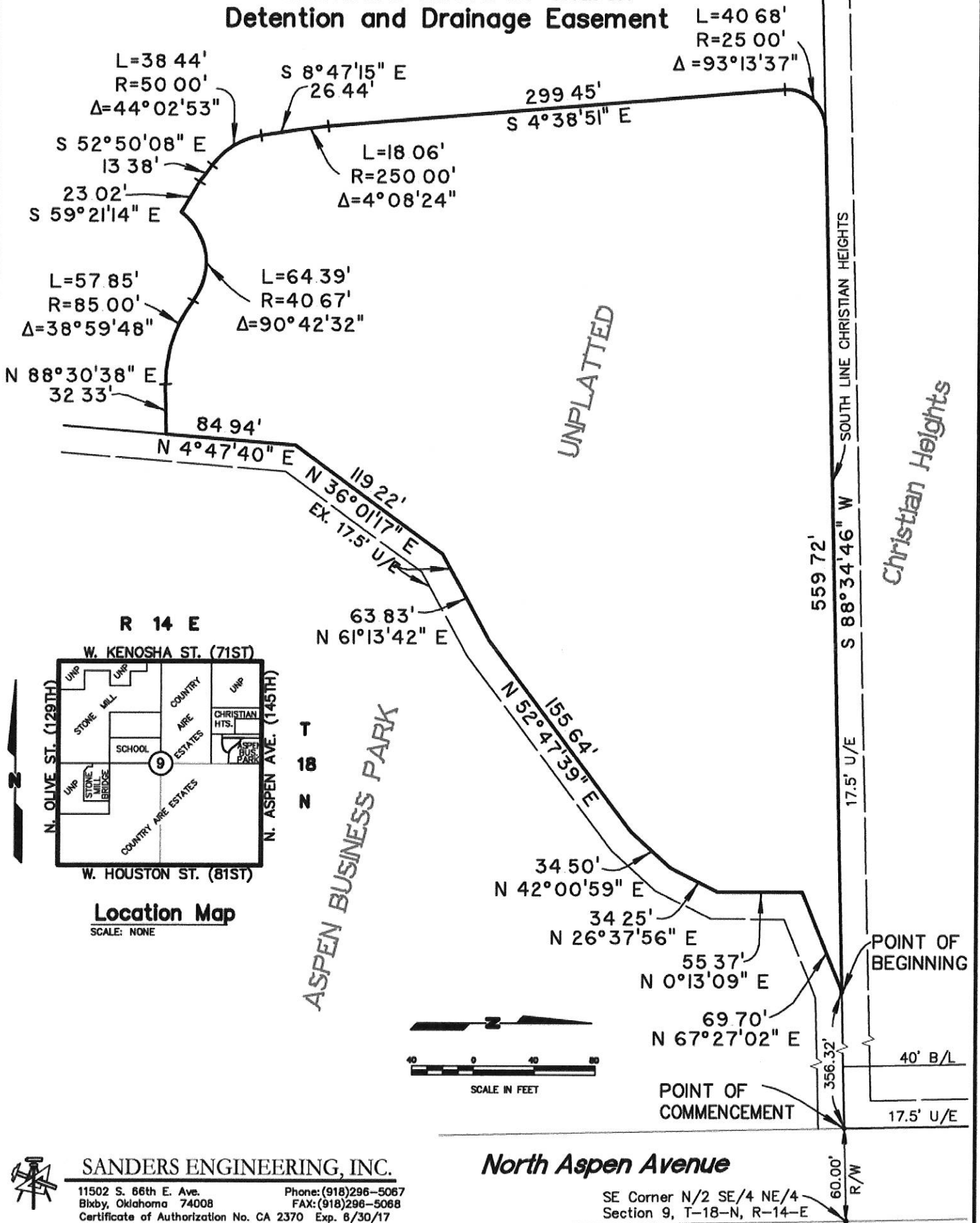
11/18/16  
Date



*Tom A. Haynes*  
SIGNATURE

# EXHIBIT "A.2"

## Immanuel Lutheran Church Detention and Drainage Easement



**SANDERS ENGINEERING, INC.**  
 11502 S. 86th E. Ave. Phone: (918)296-5067  
 Bixby, Oklahoma 74008 FAX: (918)296-5068  
 Certificate of Authorization No. CA 2370 Exp. 6/30/17

**North Aspen Avenue**

SE Corner N/2 SE/4 NE/4  
Section 9, T-18-N, R-14-E