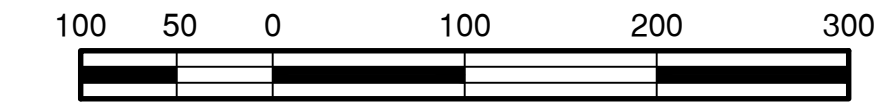
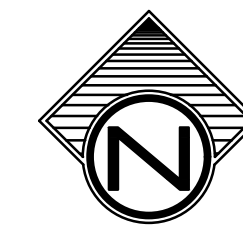


Spring Hill at Forest Ridge

A subdivision in the City of Broken Arrow, being a part of the N/2 of Section 11, Township 18 North, Range 15 East, Wagoner County, State of Oklahoma



SCALE: 1"=100'

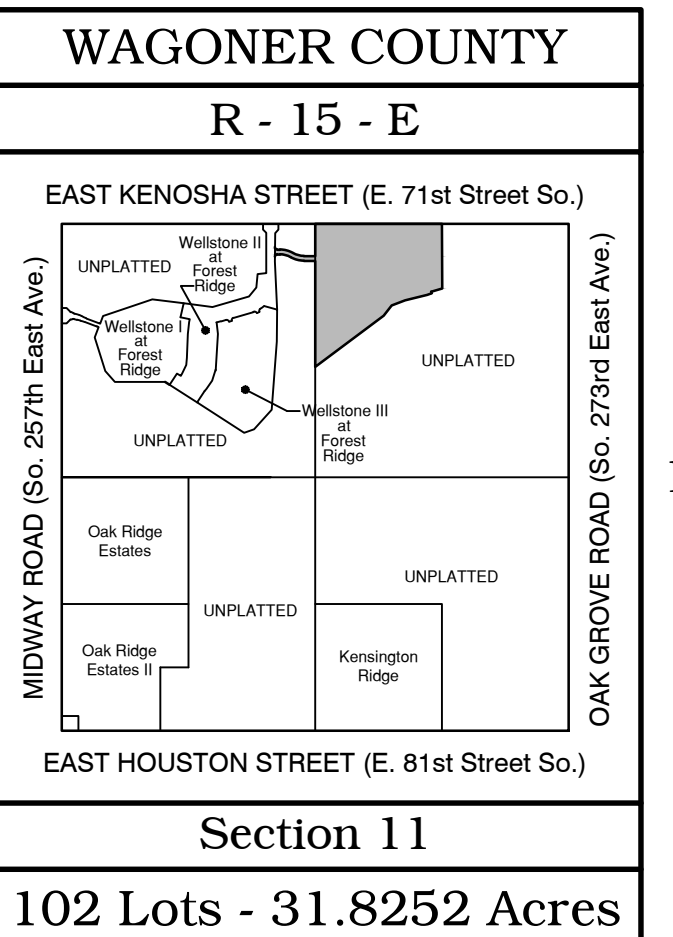
OWNER / DEVELOPER

The Robson Companies, Inc.,
an Oklahoma corporation
901 North Forest Ridge Boulevard
Broken Arrow, Oklahoma 74014
918.357.2787

ENGINEER / SURVEYOR

Tulsa Engineering & Planning Associates, Inc.
an Oklahoma corporation
9820 East 41st Street, Suite 102
Tulsa, Oklahoma 74146
918.252.9621

CERTIFICATE OF AUTHORIZATION NO. 531
RENEWAL DATE: JUNE 30, 2019



Section 11
102 Lots - 31.8252 Acres

Line Table

No.	Bearing	Distance	No.	Bearing	Distance
L01	S 70°32'28"W	50.00'	L14	N 53°35'34"W	18.39'
L02	N 89°40'26"E	16.50'	L15	N 53°16'20"E	21.79'
L03	N 00°19'34"E	100.00'	L16	N 19°19'38"E	10.09'
L04	S 89°40'26"E	16.50'	L17	N 27°16'37"W	12.92'
L05	N 03°39'16"W	32.43'	L18	S 88°56'47"E	12.92'
L06	S 48°40'13"E	32.38'	L19	S 37°12'15"W	6.98'
L07	N 03°39'16"W	23.92'	L20	N 78°32'44"W	33.05'
L08	S 48°40'13"E	23.92'	L21	N 67°27'38"W	15.57'
L09	S 63°50'16"W	12.77'	L22	N 26°09'44"W	18.12'
L10	N 44°50'14"W	35.46'	L23	N 45°20'39"W	14.51'
L11	S 45°09'46"W	35.26'	L24	N 44°56'44"W	54.88'
L12	S 19°19'38"W	10.09'	L25	N 78°00'03"W	41.22'
L13	S 53°06'05"W	18.72'	L26	S 89°40'26"E	3.59'
			L27	N 37°58'56"W	15.00'

Curve Table

No.	Delta	Radius	Length	Chord Bearing	Chord Distance
C01	03°40'30"	250.00'	16.04'	S 17°39'17"E	16.03'
C02	29°39'35"	275.00'	142.36'	N 74°50'39"W	140.77'
C03	29°39'35"	225.00'	116.47'	N 74°50'39"W	115.18'
C04	90°00'00"	25.00'	39.27'	S 45°19'34"W	35.36'
C05	90°00'00"	25.00'	39.27'	S 44°40'26"E	35.36'
C06	29°39'35"	275.00'	142.36'	S 74°50'39"E	140.77'
C07	29°39'35"	225.00'	116.47'	S 74°50'39"E	115.18'
C08	26°29'18"	150.00'	69.35'	N 77°04'55"E	68.73'
C09	67°29'28"	25.00'	29.45'	N 30°05'05"E	27.78'
C10	134°50'03"	50.00'	117.80'	N 63°50'16"E	92.38'
C11	64°17'03"	25.00'	28.05'	N 60°48'44"E	26.60'
C12	134°50'03"	11.33'	26.70'	N 63°50'16"E	20.94'
C13	112°30'29"	14.33'	28.15'	N 67°35'01"W	23.84'
C14	112°30'29"	14.33'	28.15'	N 59°54'30"W	23.84'
C15	22°57'16"	300.00'	120.19'	N 78°31'22"E	119.39'
C16	90°00'00"	25.00'	39.27'	N 45°00'00"E	35.36'
C17	180°00'00"	7.33'	23.04'	S 90°00'00"W	14.67'
C18	90°00'00"	25.00'	39.27'	S 45°00'00"E	35.36'
C19	36°52'12"	25.00'	16.09'	N 71°33'54"E	15.81'
C20	163°44'23"	50.00'	142.89'	S 45°00'00"E	98.99'
C21	36°52'12"	25.00'	16.09'	S 18°26'06"W	15.81'
C22	115°40'12"	250.00'	69.01'	S 07°54'31"E	68.80'
C23	16°41'41"	300.00'	67.29'	N 11°02'25"E	66.88'
C24	87°10'42"	25.00'	38.04'	N 46°24'39"W	34.47'
C25	17°00'00"	325.00'	96.43'	S 81°30'00"W	96.08'
C26	35°47'46"	200.00'	124.95'	S 55°06'07"W	122.93'
C27	16°04'05"	500.00'	140.22'	S 45°14'17"W	139.76'
C28	43°12'56"	200.00'	150.85'	S 74°54'48"W	147.30'
C29	77°09'37"	25.00'	33.67'	S 57°54'27"W	31.18'
C30	33°56'41"	300.00'	177.74'	S 36°17'59"W	175.15'
C31	14°04'12"	50.00'	12.28'	S 46°14'14"W	12.25'
C32	252°03'52"	50.00'	219.97'	N 14°45'56"W	80.87'
C33	57°59'40"	50.00'	50.61'	N 82°16'10"E	48.48'
C34	33°56'41"	250.00'	148.11'	N 36°17'59"E	145.96'
C35	77°09'37"	25.00'	33.67'	N 19°15'10"W	31.18'
C36	60°22'21"	200.00'	210.74'	N 07°38'49"W	201.13'
C37	10°56'55"	200.00'	38.22'	N 08°00'49"E	38.16'
C38	40°45'54"	25.00'	17.79'	N 06°53'40"W	17.41'
C39	118°19'50"	50.00'	103.26'	N 31°53'18"E	85.87'
C40	40°45'54"	25.00'	17.79'	N 70°40'16"E	17.41'
C41	13°32'57"	200.00'	47.30'	N 57°03'47"E	47.19'
C42	26°09'45"	250.00'	114.16'	N 76°55'08"E	113.17'
C43	26°29'18"	200.00'	92.48'	N 77°04'55"E	91.64'
C44	42°55'16"	200.00'	148.82'	N 21°27'38"W	146.34'
C45	80°07'30"	25.00'	34.96'	N 02°51'30"W	32.18'
C46	16°04'05"	450.00'	126.20'	S 45°14'17"W	125.79'
C47	129°16'02"	150.00'	338.42'	N 62°05'39"W	271.08'
C48	05°46'15"	150.00'	15.11'	N 05°25'29"E	15.10'
C49	161°46'04"	25.00'	70.59'	N 89°11'39"E	49.37'
C50	218°42'48"	25.00'	40.61'	N 81°53'18"E	38.29'
C51	161°46'04"	25.00'	70.59'	N 25°29'03"W	49.37'
C52	08°22'16"	150.00'	21.92'	N 59°39'07"E	21.90'
C53	26°09'44"	200.00'	91.32'	N 76°55'08"E	90.53'
C54	14°31'42"	200.00'	50.71'	S 07°15'51"E	50.58'
C55	87°31'42"	25.00'	38.19'	S 29°14'09"W	34.58'
C56	23°48'01"	250.00'	103.70'	S 61°07'09"W	102.96'
C57	03°03'51"	25.00'	40.61'	S 84°14'05"W	38.29'
C58	37°42'10"	150.00'	98.71'	N 18°51'05"W	96.93'
C59	17°00'00"	375.00'	111.27'	S 81°30'00"W	110.86'
C60	94°27'08"	25.00'	41.21'	N 59°46'26"W	36.70'
C61	12°32'52"	150.00'	32.85'	N 06°16'26"W	32.78'

I, the undersigned, the duly qualified and acting county Treasurer, of Wagoner County, Wagoner, Oklahoma, hereby certify that according to the _____ tax rolls the taxes on the above description are paid.

Dana Patten, County Treasurer

Line Table

No.	Bearing	Distance	No.	Bearing	Distance
L14	N 53°35'34"W	18.39'	L27	N 37°58'56"W	15.00'
L15	N 53°16'20"E	21.79'			
L16	N 19°19'38"E	10.09'			
L17	N 27°16'37"W	12.92'			
L18	S 88°56'47"E	12.92'			
L19	S 37°12'15"W	6.98'			
L20	N 78°32'44"W	33.05'			
L21	N 67°27'38"W	15.57'			
L22	N 26°09'44"W	18.12'			
L23	N 45°20'39"W	14.51'			
L24	N 44°56'44"W	54.88'			
L25	N 78°00'03"W	41.22'			
L26	S 89°40'26"E	3.59'			
L27	N 37°58'56"W	15.00'			

Curve Table

No.	Delta	Radius	Length	Chord Bearing	Chord Distance
C01	03°40'30"	250.00'	16.04'	S 17°39'17"E	16.03'
C02	29°39'35"	275.00'	142.36'	N 74°50'39"W	140.77'
C03	29°39'35"	225.00'	116.47'	N 74°50'39"W	115.18'
C04	90°00'00"	25.00'	39.27'	S 45°19'34"W	35.36'
C05	90°00'00"	25.00'	39.27'	S 44°40'26"E	35.36'
C06	29°39'35"	275.00'	142.36'	S 74°50'39"E	140.77'
C07	29°39'35"	225.00'	116.47'	S 74°50'39"E	115.18'
C08	26°29'18"	150.00'	69.35'	N 77°04'55"E	68.73'
C09	67°29'28"	25.00'	29.45'	N 30°05'05"E	27.78'
C10	134°50'03"	50.00'	117.80'	N 63°50'16"E	92.38'
C11	64°17'03"	25.00'	28.05'	N 60°48'44"E	26.60'
C12	134°50'03"	11.33'	26.70'	N 63°50'16"E	20.94'
C13	112°30'29"	14.33'	28.15'	N 67°35'01"W	23.84'
C14	112°30'29"	14.33'	28.15'	N 59°54'30"W	23.84'
C15	22°57'16"	300.00'	120.19'	N 78°31'22"E	119.39'
C16	90°00'00"	25.00'	39.27'	N 45°00'00"E	35.36'
C17	180°00'00"	7.33'	23.04'	S 90°00'00"W	14.67'
C18	90°00'00"	25.00'	39.27'	S 45°00'00"E	35.36'
C19	36°52'12"	25.00'	16.09'	N 71°33'54"E	15.81'
C20	163°44'23"	50.00'	142.89'	S 45°00'00"E	98.99'
C21	36°52'12"	25.00'	16.09'	S 18°26'06"W	15.81'
C22	115°40'12"	250.00'	69.01'	S 07°54'31"E	68.80'
C23	16°41'41"	300.00'	67.29'	N 11°02'25"E	66.88'
C24	87°10'42"	25.00'	38.04'	N 46°24'39"W	34.47'
C25	17°00'00"	325.00'	96.43'	S 81°30'00"W	96.08'
C26	35°47'46"	200.00'	124.95'	S 55°06'07"W	122.93'
C27	16°04'05"	500.00'	140.22'	S 45°14'17"W	139.76'
C28	43°12'56"	200.00'	150.85'	S 74°54'48"W	147.30'
C29	77°09'37"	25.00'	33.67'	S 57°54'27"W	31.18'
C30	33°56'41"	300.00'	177.74'	S 36°17'59"W	175.15'
C31	14°04'12"	50.00'	12.28'	S 46°14'14"W	12.25'
C32	252°03'52"	50.00'	219.97'	N 14°45'56"W	80.87'
C33	57°59'40"	50.00'	50.61'	N 82°16'10"E	48.48'
C34	33°56'41"	250.00'	148.11'	N 36°17'59"E	145.96'
C35	77°09'37"	25.00'	33.67'	N 19°15'10"W	31.18'
C36	60°22'21"	200.00'	210.74'	N 07°38'49"W	201.13'
C37	10°56'55"	200.00'	38.22'	N 08°00'49"E	38.16'
C38	40°45'54"	25.00'	17.79'	N 06°53'40"W	17.41'
C39	118°19'50"	50.00'	103.26'	N 31°53'18"E	85.87'
C40	40°45'54"	25.00'	17.79'	N 70°40'16"E	17.41'
C41	13°32'57"	200.00'	47.30'	N 57°03'47"E	47.19'
C42	26°09'45"	250.00'	114.16'	N 76°55'08"E	113.17'
C43	26°29'18"	200.00'	92.48'	N 77°04'55"E	91.64'
C44	42°55'16"	200.00'	148.82'	N 21°27'38"W	146.34'
C45	80°07'30"	25.00'	34.96'	N 02°51'30"W	32.18'
C46	16°04'05"	450.00'	126.20'	S 45°14'17"W	125.79'
C47	129°16'02"	150.00'	338.42'	N 62°05'39"W	271.08'
C48	05°46'15"	150.00'	15.11'	N 05°25'29"E	15.10'
C49	161°46'04"	25.00'	70.59'	N 89°11'39"E	49.37'
C50	218°42'48"	25.00'	40.61'	N 81°53'18"E	38.29'
C51	161°46'04"	25.00'	70.59'	N 25°29'03"W	49.37'
C52	08°22'16"	150.00'	21.92'	N 59°39'07"E	21.90'
C53	26°09'44"	200.00'	91.32'	N 76°55'08"E	90.53'
C54	14°31'42"	200.00'	50.71'	S 07°15'51"E	50.58'
C55	87°31'42"	25.00'	38.19'	S 29°14'09"W	34.58'
C56	23°48'01"	250.00'	103.70'	S 61°07'09"W	102.96'
C57	03°03'51"	25.00'	40.61'	S 84°14'05"W	38.29'
C58	37°42'10"	150.00'	98.71'	N 18°51'05"W	96.93'
C59	17°00'00"	375.00'	111.27'	S 81°30'00"W	110.86'
C60	94°27'08"	25.00'	41.21'	N 59°46'26"W	36.70'
C61	12°32'52"	150.00'	32.85'	N 06°16'26"W	32.78'

I, the undersigned, the duly qualified and acting county Treasurer, of Wagoner County, Wagoner, Oklahoma, hereby certify that according to the _____ tax rolls the taxes on the above description are paid.

Line Table

No.	Bearing	Distance	No.	Bearing	Distance
L14	N 53°35'34"W	18.39'	L27	N 37°58'56"W	15.00'
L15	N 53°16'20"E	21.79'			
L16	N 19°19'38"E	10.09'			
L17	N 27°16'37"W	12.92'			
L18	S 88°56'47"E	12.92'			
L19	S 37°12'15"W	6.98'			
L20	N 78°32'44"W	33.05'			
L21	N 67°27'38"W	15.57'			
L22	N 26°09'44"W	18.12'			
L2					