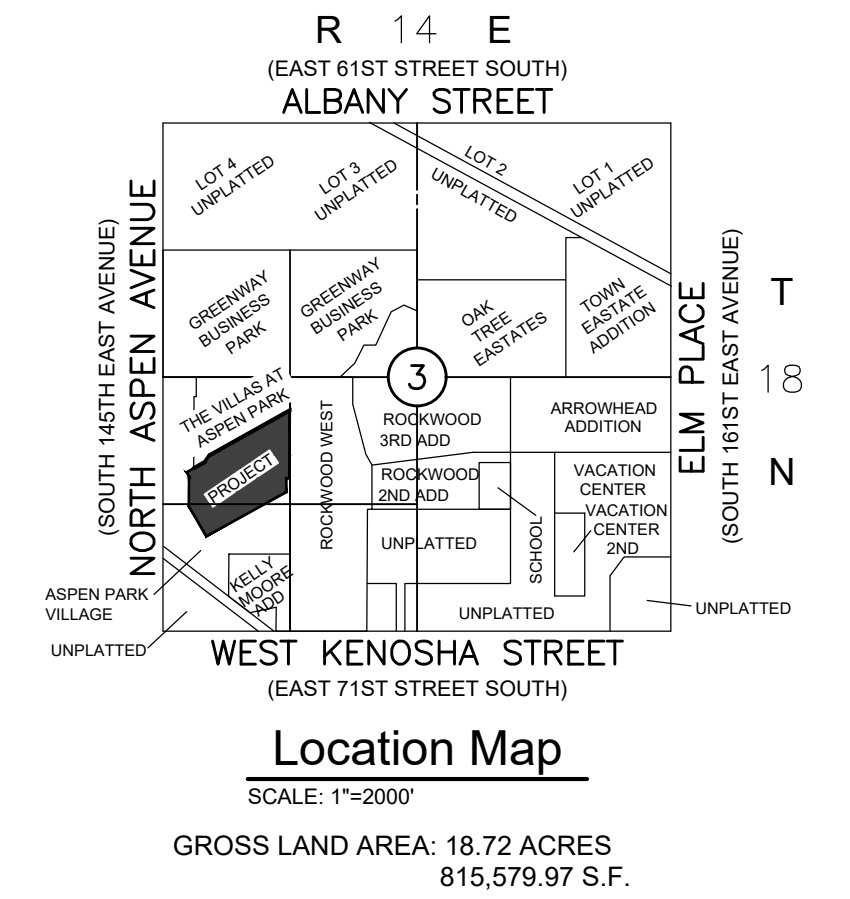


PURCHASER / CLIENT
ASPEN MEADOWS LLC
 4200 E. SKELLY DRIVE
 TULSA, OKLAHOMA 74135
 PHONE: (918) 492-1983

ENGINEER/SURVEYOR
TUTTLE & ASSOCIATES, INC.
 9718 E. 55TH PL.
 TULSA, OKLAHOMA 74146
 PHONE: (918) 663-5567
 CERTIFICATE OF AUTHORITY CA 465
 EXPIRATION 6-30-17

CONCEPTUAL PLANS OF ASPEN MEADOWS RESERVE I AND A PART OF LOT 1, BLOCK 4 Aspen Park Village

A PART OF THE W/2 OF SW/4 OF SECTION 3, T-18-N, R-14-E
 AN ADDITION TO THE CITY OF BROKEN ARROW
 TULSA COUNTY, OKLAHOMA
 P.U.D. No: 118E



NOTE:
 ADDRESS IS AS FOLLOWS:
 OFFICE/CLUBHOUSE = 1216 W. PRINCETON CIRCLE

**LEGAL DESCRIPTION
 ASPEN MEADOWS**

The following Tracts of Land in the SW/4 of Section 3, Township 18 North, Range 14 East of the Indian Base and Meridian, Tulsa County, State of Oklahoma, More particularly described as follows, to-wit:

Reserve I of Aspen Park Village, an addition to the City of Broken Arrow;

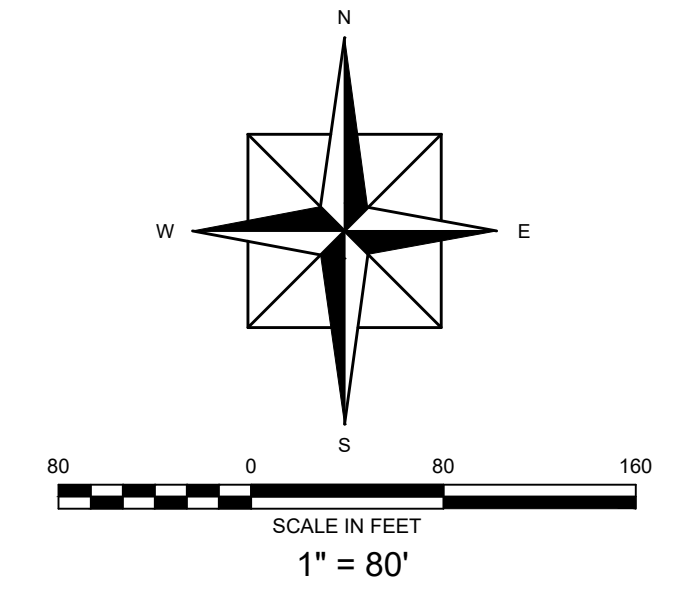
AND

A part of Lot 1, Block 4 of Aspen Park Village, an addition to the City of Broken Arrow, More particularly described as follows, to-wit:

Beginning at the SE Corner of Lot 1, Block 1 of The Villas at Aspen Park a Replat of Blocks 2, 3 and Part of Block 4 of Aspen Park Village, an addition to the City of Broken Arrow;

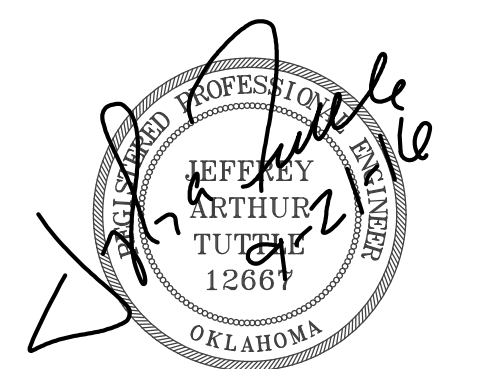
Thence S 00° 19' 32" W along the east boundary of Lot 1, Block 4 of Aspen Park Village, a distance of 705.44;
 Thence West along the east boundary, a distance of 30.00 feet;
 Thence S 00° 19' 32" W along the east boundary, a distance of 143.25 feet;
 Thence leaving said east boundary S 61° 07' 36" W, a distance of 951.64 feet to a point on the west boundary of said Lot 1, Block 4 of Aspen Park Village;
 Thence N 30° 05' 10" W along said west boundary, a distance of 363.62 feet;
 Thence N 00° 18' 32" E along said west boundary, a distance of 307.83 feet;
 Thence N 29° 11' 48" W along said west boundary, a distance of 50.76 feet to the NW corner of said Lot 1, Block 4;
 Thence N 60° 48' 12" E along the north boundary of said Lot 1 Block 4, a distance of 84.95 feet to the SW corner of Lot 1, Block 1 of The Villas at Aspen Park a Replat of Blocks 2, 3 and Part of Block 4 of Aspen Park Village, an addition to the City of Broken Arrow;
 Thence continuing N 60° 48' 12" E along the south boundary of said Lot 1 Block 1, a distance of 134.67 feet;
 Thence N 35° 40' 38" E along said south boundary, a distance of 84.50 feet;
 Thence N 60° 47' 00" E along said south boundary, a distance of 953.91 feet to the Point of Beginning.

Said Tracts Containing a total of 815,579.97 Square Feet or 18.72 Acres.



- SHEET INDEX**
1. TITLE SHEET
 2. WATER PLAN
 3. SANITARY SEWER PLAN
 4. STORM SEWER PLAN

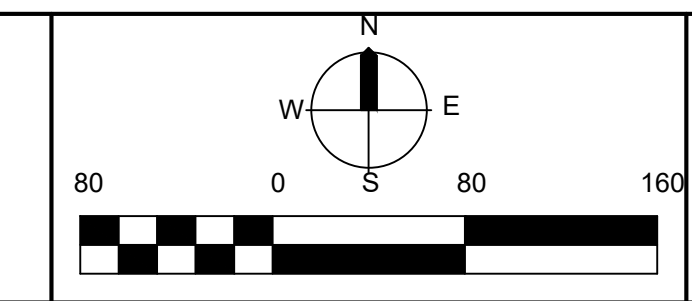
CITY OF BROKEN ARROW
 OCT 01 2016
RECEIVED



CASE NUMBER (PTXX-XXX)
 DEVELOPMENT NUMBER (XX-XXX)
 STORMWATER DETENTION DETERMINATION DD-60316-10

BEFORE YOU DIG
 PUBLIC SERVICE CO OF OKLAHOMA - 582-1511
 OKLAHOMA NATURAL GAS CO - 832-7800
 GTE - 665-8500
 TULSA CABLE TELEVISION - 665-0200
 BEFORE YOU DIG CALL OKIE 1-800-522-6543

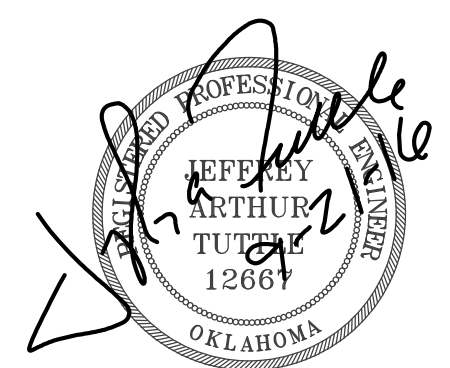
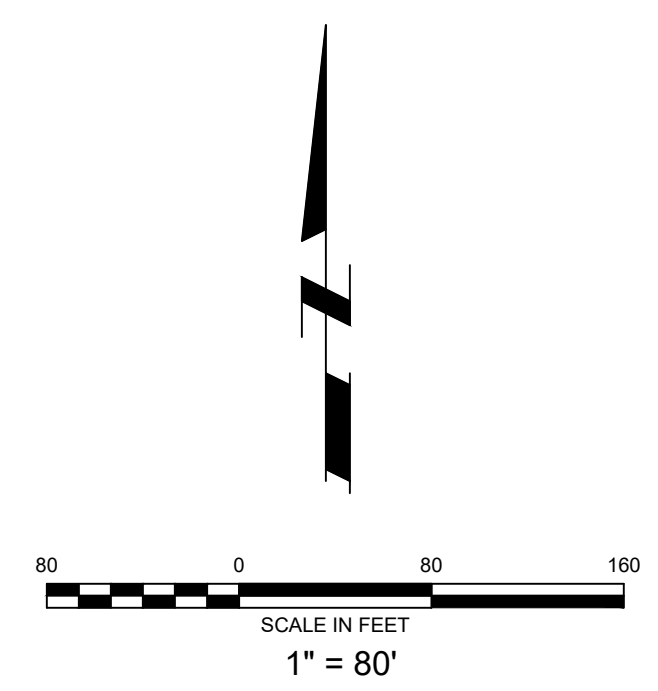
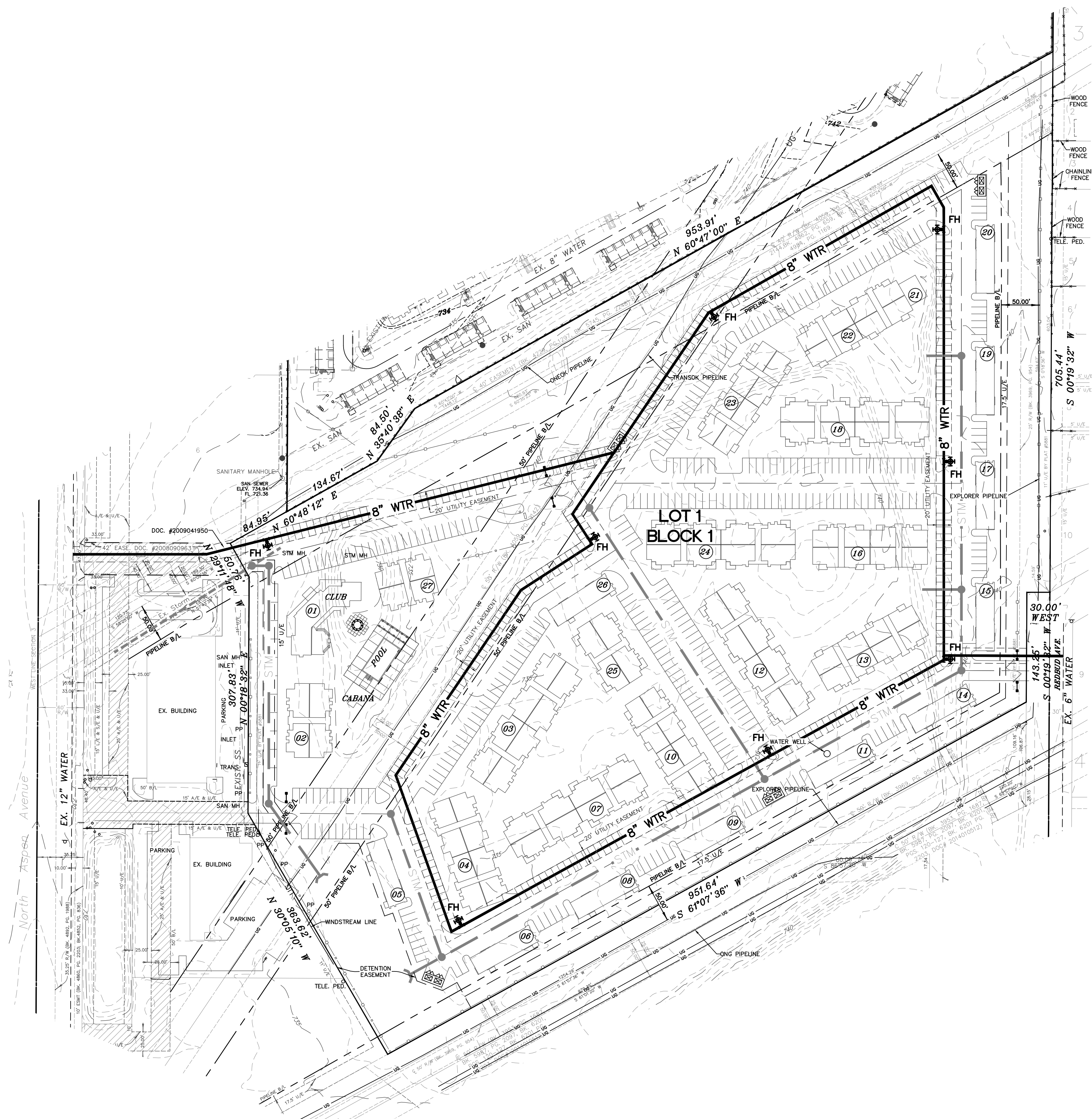
DATE	REVISIONS



**TITLE CONCEPTUAL PLANS
 ASPEN MEADOWS
 CITY OF BROKEN ARROW**

TUTTLE & ASSOCIATES, INC.
 9714 E. 55TH PL.
 TULSA, OK, 74146
 918-663-5567

SCALE:	DESIGN	DATE	DRAFTED	DATE
HORZ. 1"=80'				
VERT.	REVIEWED	DATE	APPROVED	DATE
DRAWING NAME: 5037 CONCEPTUAL TITLE	SHEET 1 OF 4			PROJECT NO.



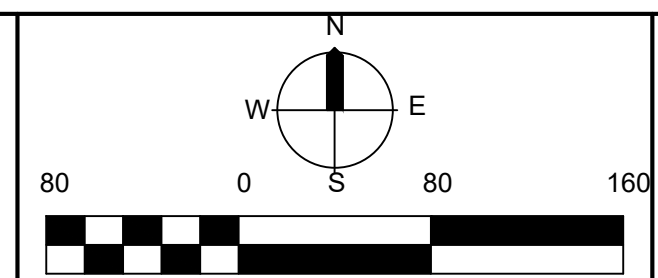
CASE NUMBER (PTXX-XXX)
 DEVELOPMENT NUMBER (XX-XXX)
 STORMWATER DETENTION DETERMINATION DD-60316-10



PUBLIC SERVICE CO OF OKLAHOMA - 582-1511
 OKLAHOMA NATURAL GAS CO - 832-7800
 GTE - 665-8500
 TULSA CABLE TELEVISION - 665-0200

BEFORE YOU DIG CALL OKIE 1-800-522-6543

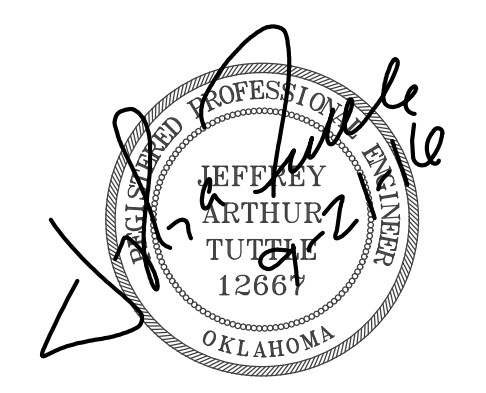
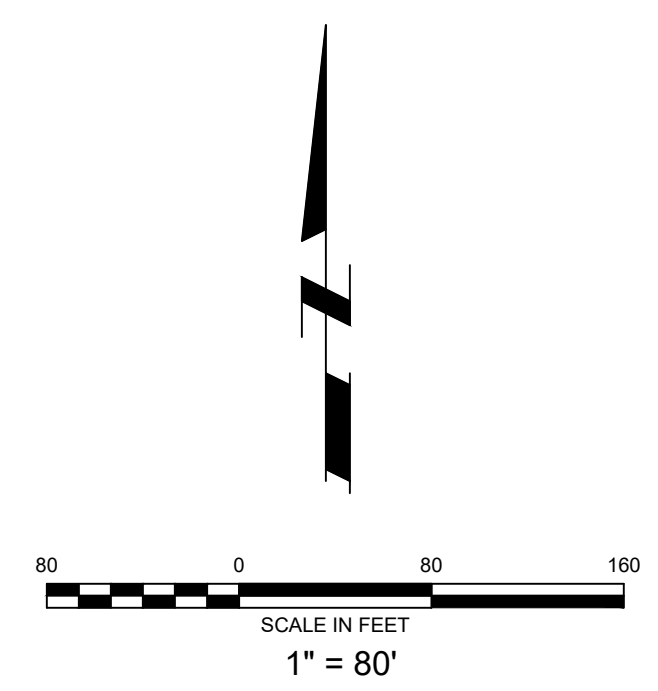
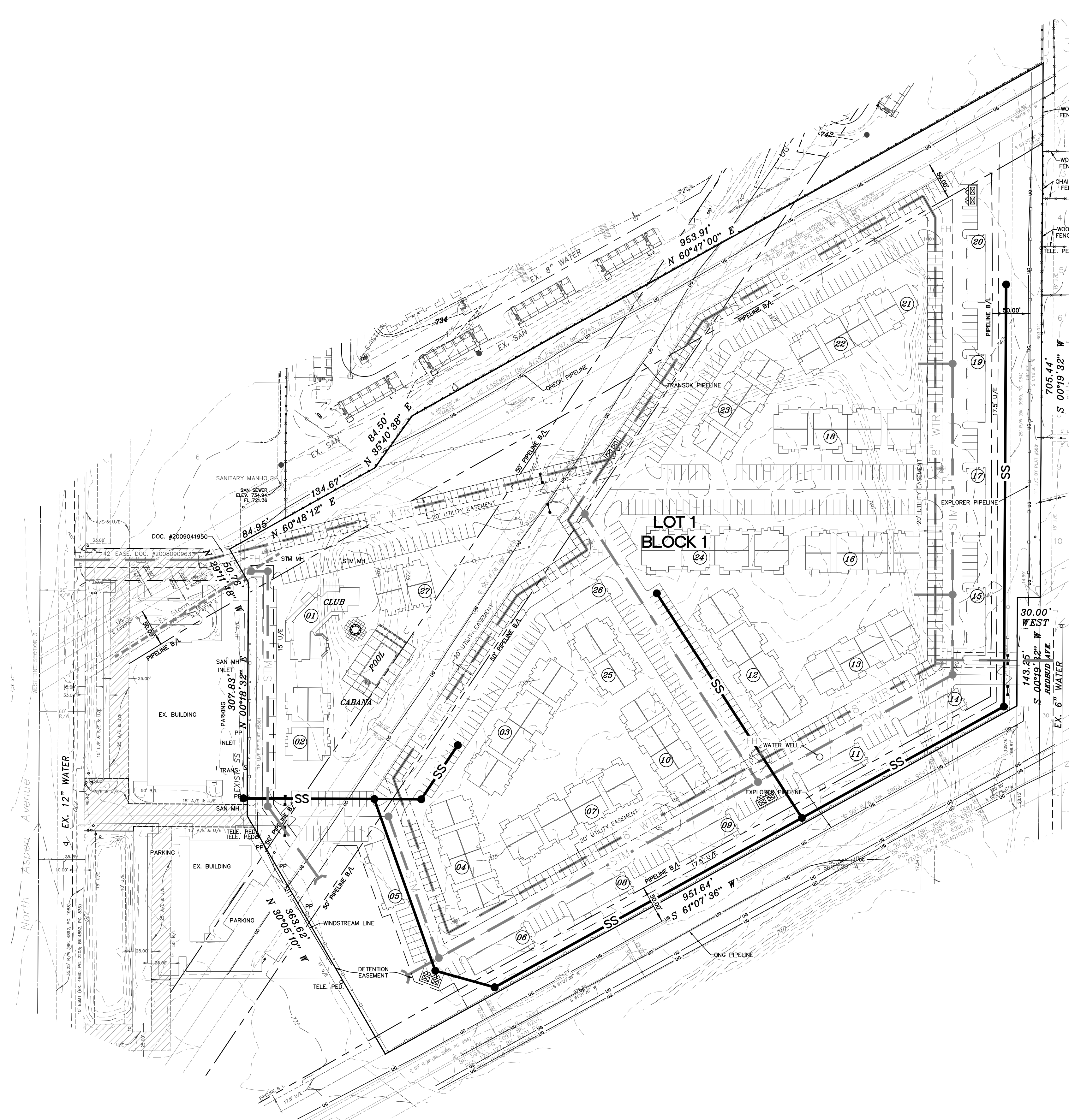
DATE	REVISIONS



WATER CONCEPTUAL PLAN
 ASPEN MEADOWS
 CITY OF BROKEN ARROW

TUTTLE & ASSOCIATES, INC.
 9714 E. 55TH PL.
 TULSA, OK. 74146
 918-663-5567

SCALE:	DESIGN	DATE	DRAFTED	DATE
HORIZ. 1"=80'	REVIEWED	DATE	APPROVED	DATE
VERT. _____	SHEET 2 OF 4		PROJECT NO.	
DRAWING NAME: 5037 WATER PLAN				



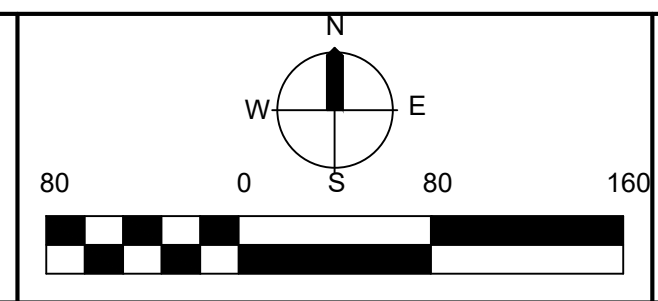
CASE NUMBER (PTXX-XXX)
 DEVELOPMENT NUMBER (XX-XXX)
 STORMWATER DETENTION DETERMINATION DD-60316-10



PUBLIC SERVICE CO OF OKLAHOMA - 582-1511
 OKLAHOMA NATURAL GAS CO - 832-7800
 GTE - 665-8500
 TULSA CABLE TELEVISION - 665-0200

BEFORE YOU DIG CALL OKIE 1-800-522-6543

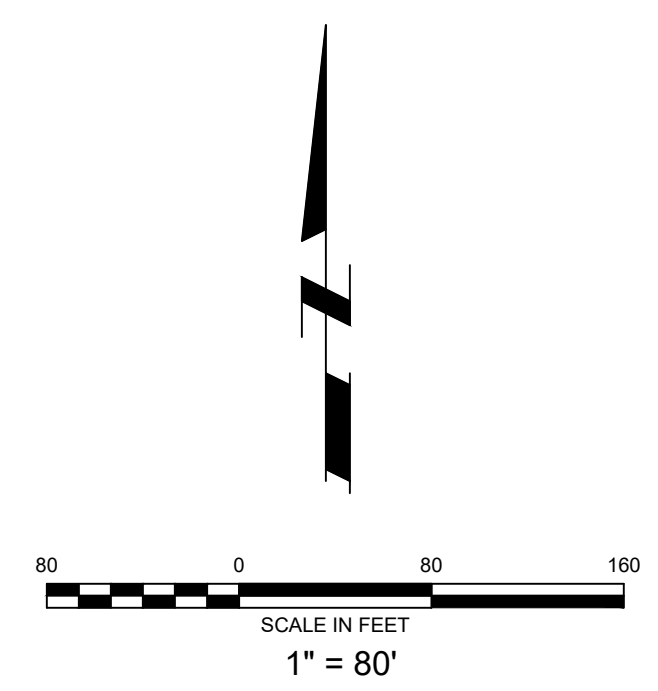
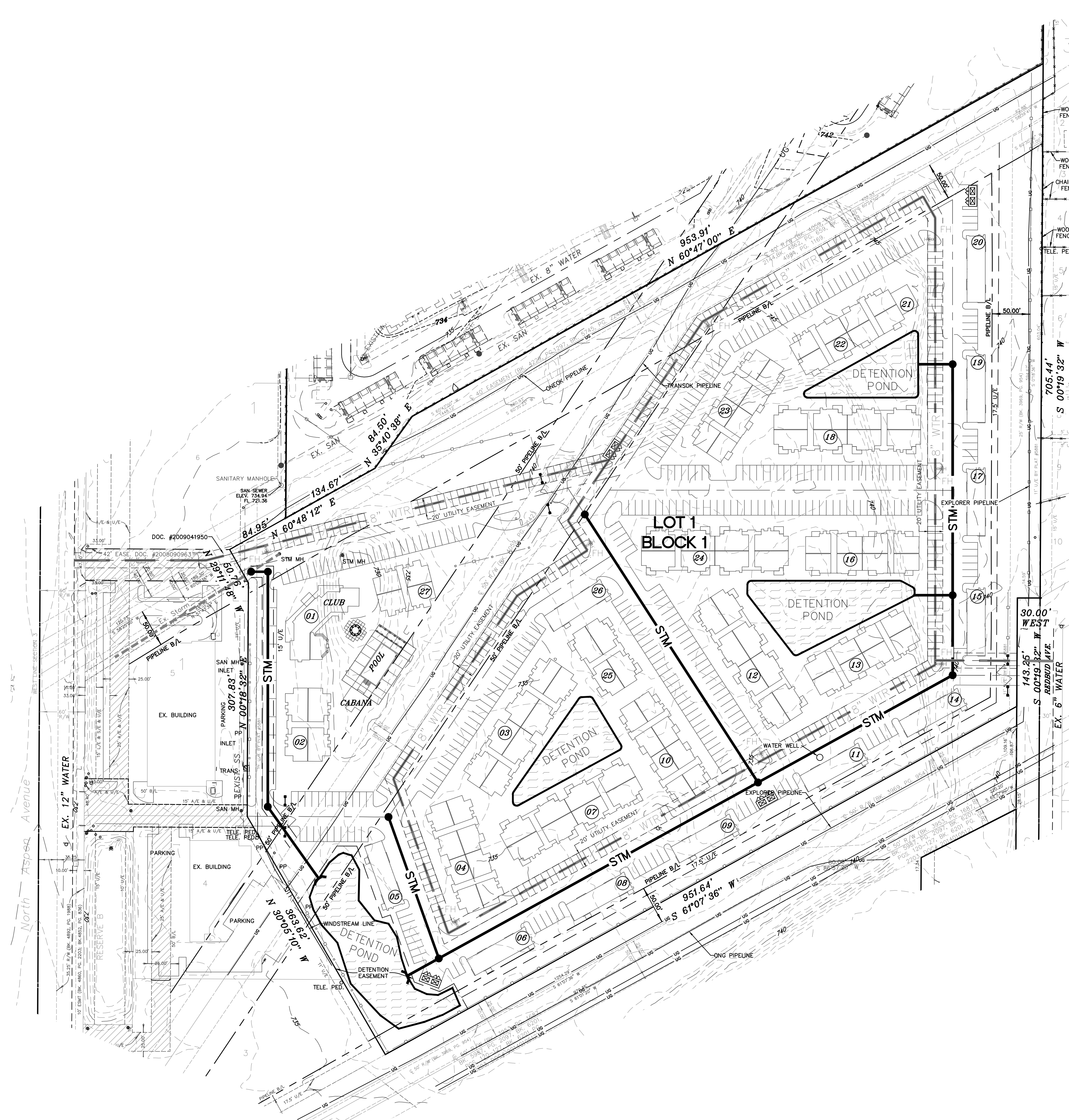
DATE	REVISIONS



SANITARY CONCEPTUAL PLAN
 ASPEN MEADOWS
 CITY OF BROKEN ARROW

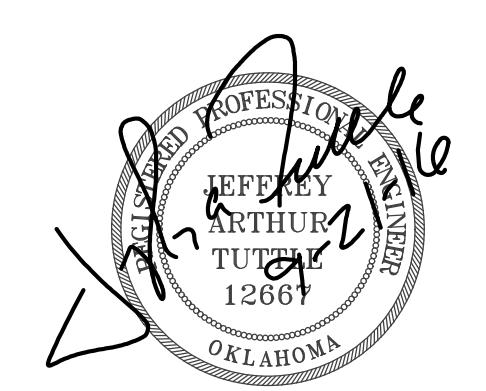
TUTTLE & ASSOCIATES, INC.
 9714 E. 55TH PL.
 TULSA, OK. 74146
 918-663-5567

SCALE:	DESIGN	DATE	DRAFTED	DATE
HORZ. 1"=80'				
VERT.	REVIEWED	DATE	APPROVED	DATE
DRAWING NAME: 5037 SANITARY PLAN	SHEET 3			PROJECT NO.
	OF 4			



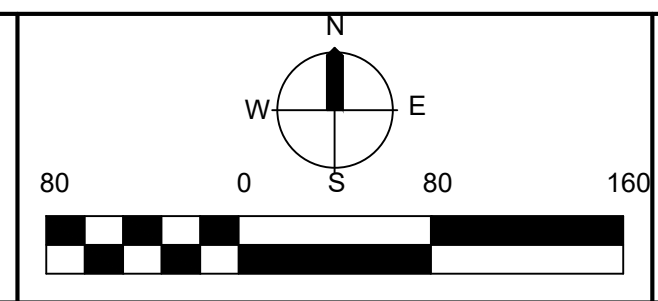
PUBLIC SERVICE CO OF OKLAHOMA - 582-1511
 OKLAHOMA NATURAL GAS CO - 832-7800
 GTE - 665-8500
 TULSA CABLE TELEVISION - 665-0200

BEFORE YOU DIG CALL OKIE 1-800-522-6543



CASE NUMBER (PTXX-XXX)
 DEVELOPMENT NUMBER (XX-XXX)
 STORMWATER DETENTION DETERMINATION DD-60316-10

DATE	REVISIONS



STORM CONCEPTUAL PLAN
 ASPEN MEADOWS
 CITY OF BROKEN ARROW

TUTTLE & ASSOCIATES, INC.
 9714 E. 55TH PL.
 TULSA, OK. 74146
 918-663-5567

SCALE: HORZ. 1"=80' VERT. _____	DESIGN	DATE	DRAFTED	DATE
	DRAWING NAME: 5037 STORM PLAN	REVIEWED	DATE	APPROVED
SHEET 4 OF 4		PROJECT NO.		