

239D3/249D3/259D3/ 279D3/289D3/299D3/ 299D3 XE

Compact Track Loaders



| Engine | 239D3 | 249D3 | 259D3 | 279D3 | 289D3 | 299D3 | 299D3 XE |
|-------------------------|---------------------|---------------------|---------------------|----------------------|----------------------|----------------------|----------------------|
| Gross Power (SAE J1995) | 50.1 kW 67.1 hp | 50.1 kW 67.1 hp | 55.4 kW 74.3 hp | 55.4 kW 74.3 hp | 55.4 kW 74.3 hp | 73 kW 98 hp | 82 kW 110 hp |
| Weights | | | | | | | |
| Operating Weight | 3372 kg 7,434 lb | 3552 kg 7,831 lb | 4076 kg 8,987 lb | 4579 kg 10,095 lb | 4848 kg 10,688 lb | 5200 kg 11,464 lb | 5333 kg 11,756 lb |

239D3/249D3/259D3/279D3/289D3/
299D3/299D3 XE Features

Industry Leading Cab

One piece, modular design provides a premium sealed and pressurized cab for a cleaner and quieter operating environment with excellent visibility, wide opening door, and generous leg room.

Superior Power

High performance power train provides maximum performance with features such as Electronic Torque Management system and an electronic hand/foot throttle with decel pedal capability.

Powerful Hydraulics

High flow hydraulic system available for applications that demand maximum hydraulic work tool performance.

Suspended Undercarriage

Standard torsion suspension undercarriage system provides superior traction, flotation and stability to work in a wide range of applications and underfoot conditions.

Labor Saving Features

The industry leading dual direction electronic self level, return-to-dig, and work tool positioner features make repetitive tasks like grading, digging, and loading fast and easy.

Versatility

One machine, many tasks. Do more with the broad range of performance matched Cat® Work Tool Attachments, built to get the most out of your machine.

Contents

| | |
|--|----|
| Operator Station..... | 4 |
| Power Train..... | 6 |
| Lift Linkages..... | 6 |
| Steel Embedded Rubber Track Undercarriage | 7 |
| Performance | 7 |
| Attachments..... | 8 |
| Serviceability | 9 |
| Customer Support..... | 9 |
| Specifications..... | 10 |
| Feature Availability | 19 |

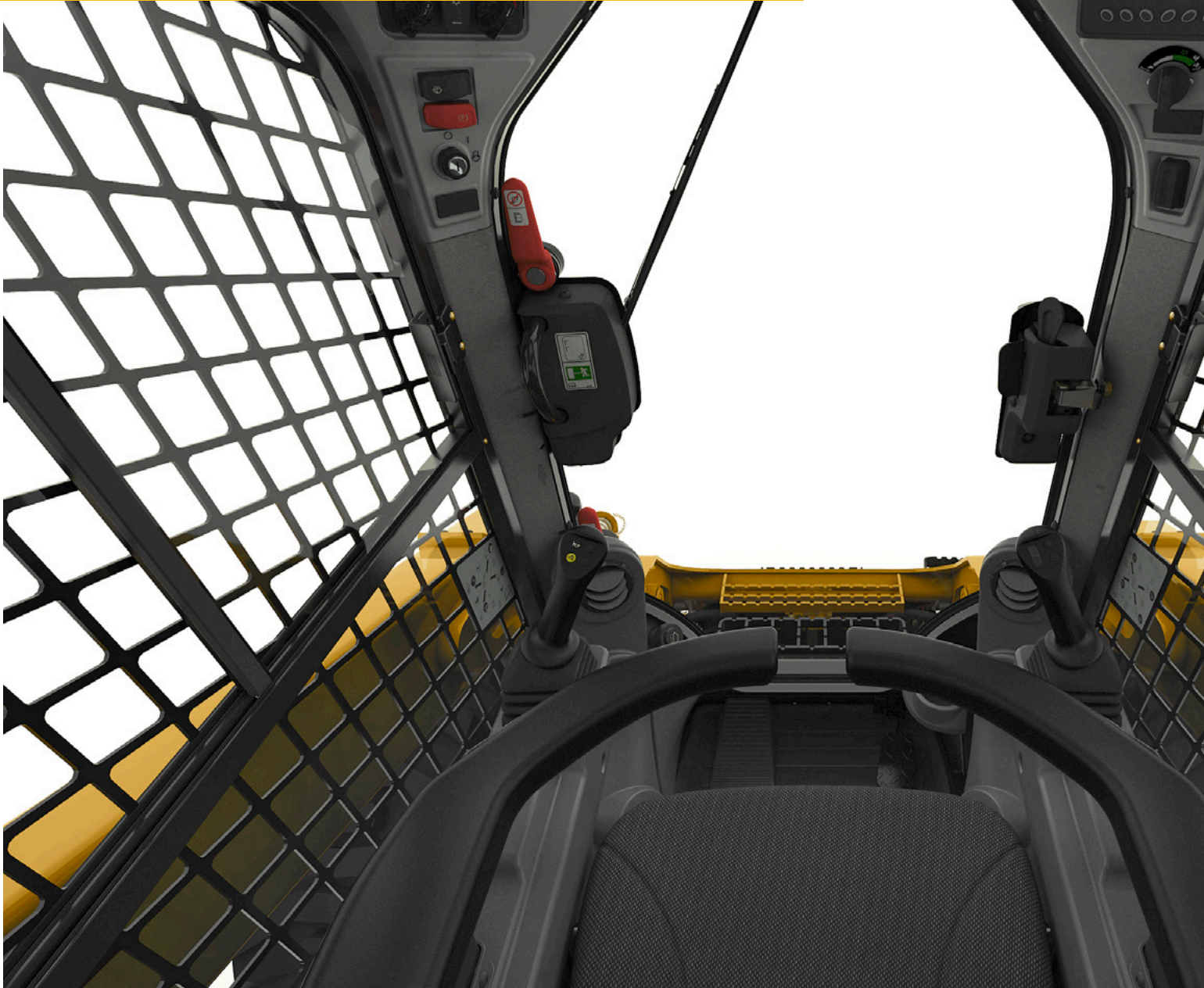




Experience the difference of a Cat Compact Track Loader. Spacious operator station features ergonomic joystick controls, ample leg room and an available high back, heated, air ride seat to keep you comfortable all day long. Built for low ground pressure with outstanding performance, comfort and versatility, the Cat D3 Series Compact Track Loaders help you get more done to improve your bottom line.

Operator Station

Spacious working environment for all day comfort.



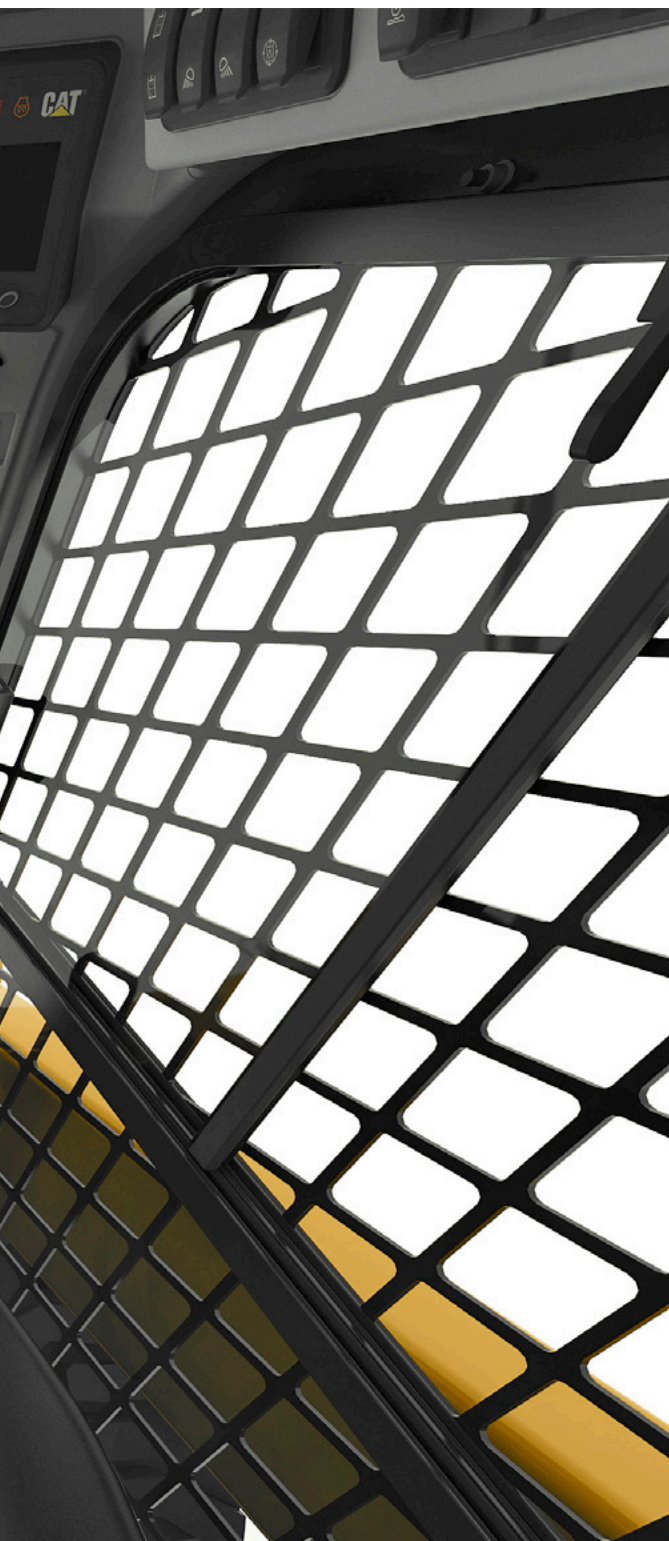
Base Display

The standard control monitor on 239D3 and 249D3 provides single-code security to help prevent theft and unwanted operation. The full color Advanced Display monitor is available as an option on these models and standard on all other Compact Track Loader models.

Best Seat on the Job Site

High back, heated, air ride seat available in both cloth and vinyl.





Superior Comfort

The Cat D3 Series sets a new standard in operator comfort. The wide, spacious interior and uncluttered floor helps you work comfortably and productively all day long. Features include:

- One piece, modular design provides a premium sealed and pressurized cab for cleaner and quieter working environment
- High back, heated, air ride seat with seat-mounted joystick controls for added comfort (option)
- Clear sight lines provide excellent visibility
- Air conditioner and heater for greater comfort in all climates (option)
- Ample leg room with 75 mm (3 in) of additional room for your knees †
- Easier entry and exit with up to a 40% wider-opening door †
- ISO or H-Pattern Control patterns are available to allow the operator to select the control pattern they are most familiar with for greater productivity

†Compared to previous model series

Advanced Display Monitor

The Advanced Display monitor (standard on most models) lets you customize your machine performance to your needs by offering the ultimate in operator control features and functionality. This easy to read 127 mm (5 in) full color display puts machine information at your fingertips. It provides on screen adjustments to working parameters and preferences such as implement response adjustment, drive response adjustment, creep setting, ride control activation speed, top speed limit setting, language, background color and gauge display style. All parameters can be customized and retained for each individual operator's code. It also provides:

- Security system to prevent unauthorized machine usage
- Capability to program up to 50 operator codes to store and recall each operator's preferences and working parameters, allowing the machine to be tailored to experience level and application
- Integrated rearview camera for enhanced job site visibility
- Provides special information and control screens for Smart Attachments
- Favorites button provides quick access to commonly used screens
- Job Clock helps track costs by monitoring and storing statistics by the job
- Machine maintenance schedule and reminders for optimum uptime





Vertical Lift Linkage



Radial Lift Linkage

Lift Linkages

Choice of lift designs.

Two types of lifting arrangement are available – vertical lift and radial lift – to meet your specific application needs.

Vertical Lift

The 249D3, 259D3, 289D3, 299D3 and 299D3 XE feature the vertical lift design which provides extended reach and lift height for material handling or quick and easy truck loading.

Radial Lift

The 239D3 and 279D3 feature the radial lift design which delivers excellent digging performance and superior mid-lift reach.

Power Train

Aggressive performance.

Cat® Engine

The electronically controlled Cat C2.2, C3.3B, and C3.8 engines provide high horsepower and torque. These rugged, reliable engines meet U.S. EPA Tier 4 Final and EU Stage IV* (C3.8), EU Stage V (C3.3B), and EU Stage IIIB* (C2.2) emission standards.

*Stage IV and Stage IIIB engines comply with the transition provisions of the EU non-road emission regulation.

Cat Intelligent Leveling (ILEV) System

The exclusive Cat Intelligent Leveling System takes machine performance to a new level and provides industry leading features such as:

- Electronic Dual Self Leveling that allows the operator to automatically maintain a level load whether lifting or lowering
- Return-to-dig which allows the operator to pre-set the digging angle of the bucket and then automatically lowers the lift arms and recalls the bucket angle
- Work Tool Positioner which allows the angle of the work tool (bucket, box rake, cold planer, forks, trencher, etc.) to be pre-set and then automatically recalled if the machine is repositioned, increasing productivity
- Electronic snubbing that automatically cushions the descent of the lift arms, slowing the downward motion just before the arms reach their stops

Electronic Throttle

An electronic dial-type throttle lets you set precise RPM setting. When the dial is moved to the high-idle position, the foot throttle functions as a decelerator pedal. This gives you greater control, allowing you to quickly adjust the travel speed during precise maneuvers or to regulate engine speed when using hydro-mechanical work tools.

The throttle-smoothing feature monitors the accelerator pedal's movement under the operator's foot when traveling over rough terrain and adjusts to provide a steadier, more even travel speed.



Steel Embedded Rubber Track Undercarriage

Suspended undercarriage for versatility, comfort and durability.

Torsion Suspension Undercarriage

The Cat Compact Track Loaders feature the industry's only standard, torsion suspension undercarriage with a steel embedded rubber track. Heavy-duty torsion axles suspend the CTL undercarriage and can move independently relative to the machine and each other. These axles absorb most of the shock to the undercarriage, machine and operator, especially over rough terrain. This means smooth travel, even at high speeds, as well as better load retention and greater productivity. The performance-tuned undercarriage system delivers improved operating stability while handling heavy loads, grading, or truck loading. Choose bar or block style tread to optimize ride, traction, flotation and ground disturbance for your application.

Outstanding Durability

The CTL undercarriage system features highly durable and easily maintained components. Steel imbeds provide a rigid support for the entire width of the track and provide excellent durability in a wide variety of applications. Continuously wound cables hold these imbeds in place and provide tensile strength, ensuring the track does not stretch. Following the same philosophy as Cat Track-Type Tractors, the elevated external positive drive system keeps drive components away from ground debris. Planetary final drive motors improve torque and drawbar performance, delivering more power to the ground. Steel rollers with metal face seals provide maximum protection for wheel bearings resulting in long-term durability and reliability in even the toughest conditions. The simple recoil grease tensioning system allows quick track tension adjustment.



Performance

Solutions for a wide range of applications.

High Performance Hydraulic System

Maximum power and reliability are built into the Cat hydraulic system to help you get the job done faster. The hydraulic system features outstanding lift and breakout forces. The standard demand fan provides improved fuel efficiency and increased horsepower.

High Flow Hydraulic Systems

High Flow (239D3/249D3/259D3) and High Flow XPS (279D3/289D3/299D3) hydraulic systems are available for applications that demand maximum work tool performance. The 299D3 XE high flow system features the highest level of hydraulic performance with 94 hydraulic HP (70 kW).

Two Speed (Standard on all CTL models)

Increase your productivity with standard Two Speed on all Compact Track Loader models.

Ride Control

The optional Speed Sensitive Ride Control system delivers a smoother ride on uneven terrain for superior comfort, higher speed operation and better material retention.



Attachments

Do more jobs with one machine using Cat Work Tools.

The Right Tool for the Job

Designed and built for optimum performance and durability, Cat Work Tools deliver high productivity in a variety of applications to maximize versatility:

- Augers
- Blades (angle, dozer)
- Buckets (general purpose, high capacity, dirt, utility, light material, multi purpose, industrial grapple, utility grapple)
- Brooms (angle, pickup, utility)
- Brushcutters
- Cold Planers
- Forks (pallet, industrial grapple, utility grapple, utility)
- Hydraulic Hammers
- Landscape Tillers and Rakes
- Material Handling Arm
- Mulchers
- Power Box Rakes
- Shear
- Snow Tools (snow blowers, pushes, plows, wings)
- Stump Grinders
- Trenchers
- Vibratory Compactors
- Wheel Saws
- Smart Backhoe
- Smart Dozer Blade with Assist
- Smart Grader Blade with Assist

Smart Attachments

Plug-and-play recognition between the machine and attachment adapts the joystick controls to match specific Smart Attachments. Special information and control screens can be accessed in the Advanced Display monitor. This high level of integration maximizes productivity by making complex attachments easy to set up and use from the comfort of the cab.

Quick Couplers

Work tools can be changed quickly and easily with the Cat Compact Track Loader's quick coupler system. The standard quick coupler features manual engagement and disengagement of work tools using two high leverage handles. The optional hydraulic quick coupler allows the operator to quickly change tools without leaving the cab.



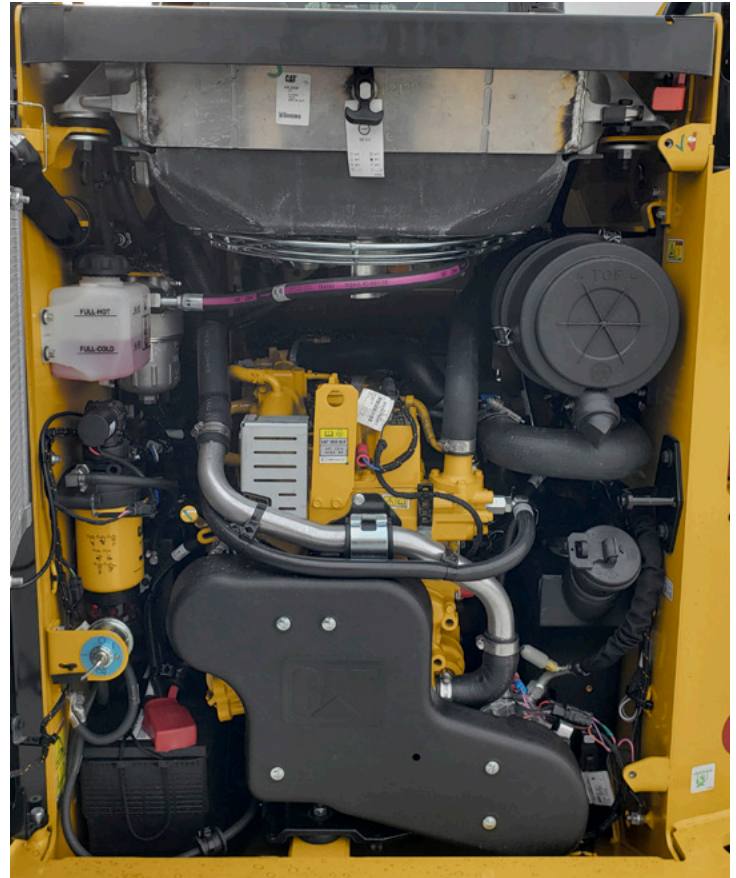
Serviceability

Easy maintenance helps keep your machine working.

Minimize Your Downtime

Convenient service features make maintenance easy, reducing your downtime:

- Easy ground level access to all routine service points
- Wide opening rear door for easy access to both sides of the engine
- Electric priming pump with automatic air bleed for the fuel system eliminates the need to pre-fill filters with fuel, reducing the risk of contaminants
- Cat Product Link™ system provides remote reporting of machine location and operating system parameters



Customer Support

Unmatched support makes the difference.



Renowned Dealer Support

From helping you choose the right machine to knowledgeable ongoing support, Cat dealers provide the best in sales and service.

- Preventive maintenance programs and guaranteed maintenance contracts
- Best-in-class parts availability
- Operator training to help boost your profits
- Genuine Cat Remanufactured parts

239D3/249D3/259D3/279D3/289D3/299D3/299D3 XE

Compact Track Loaders Specifications

| Engine | | | |
|--------------------------------------|--|----------------------|-----------|
| Engine Model | | | |
| 239D3/249D3 | | Cat C2.2 (Turbo) | |
| 259D3/279D3/289D3/ 299D3/299D3 XE | | Cat C3.8 DIT (Turbo) | |
| Gross Power (SAE J1995:2014) | | | |
| 239D3/249D3 | | 50.1 kW | 67.1 hp |
| 259D3 | | 55.4 kW | 74.3 hp |
| 279D3/289D3 | | 55.4 kW | 74.3 hp |
| 299D3 | | 73 kW | 98 hp |
| 299D3 XE | | 82 kW | 110 hp |
| Net Power (SAE J1349:2011)* | | | |
| 239D3/249D3 | | 49.1 kW | 65.8 hp |
| 259D3 | | 54.6 kW | 73.2 hp |
| 279D3/289D3 | | 54.4 kW | 72.9 hp |
| 299D3 | | 71 kW | 95 hp |
| 299D3 XE | | 79 kW | 106 hp |
| Net Power (ISO 9249:2007)* | | | |
| 239D3/249D3 | | 49.6 kW | 66.5 hp |
| 259D3 | | 55.1 kW | 73.9 hp |
| 279D3/289D3 | | 54.9 kW | 73.7 hp |
| 299D3 | | 71 kW | 95 hp |
| 299D3 XE | | 80 kW | 107 hp |
| Displacement | | | |
| 239D3/249D3 | | 2.2 L | 134.3 in³ |
| 259D3/279D3/289D3 | | 3.3 L | 203 in³ |
| 299D3/299D3 XE | | 3.8 L | 232 in³ |
| Stroke | | | |
| 239D3/249D3 | | 100 mm | 3.9 in |
| 259D3/279D3/289D3/ 299D3/299D3 XE | | 120 mm | 4.7 in |
| Bore | | | |
| 239D3/249D3 | | 84 mm | 3.3 in |
| 259D3/279D3/289D3 | | 94 mm | 3.7 in |
| 299D3/299D3 XE | | 100 mm | 3.9 in |

*Net power advertised is the power available at the flywheel when the engine is equipped with alternator, air cleaner, muffler/aftertreatment and cooling fan.

| Weights* | | |
|-----------------------------------|-----------|-----------|
| Operating Weight | | |
| 239D3 | 3372 kg | 7,434 lb |
| 249D3 | 3552 kg | 7,831 lb |
| 259D3 | 4076 kg | 8,987 lb |
| 279D3 | 4579 kg | 10,095 lb |
| 289D3 | 4848 kg | 10,688 lb |
| 299D3 | 5200 kg | 11,464 lb |
| 299D3 XE | 5333 kg | 11,756 lb |
| Power Train | | |
| Travel Speed (Forward or Reverse) | | |
| One Speed | | |
| 239D3/249D3 | 7.2 km/h | 4.5 mph |
| 259D3 | 9.5 km/h | 5.9 mph |
| 279D3/289D3 | 7.2 km/h | 4.5 mph |
| 299D3/299D3 XE | 8.4 km/h | 5.2 mph |
| Two Speed | | |
| 239D3/249D3 | 13.3 km/h | 8.3 mph |
| 259D3 | 13.7 km/h | 8.5 mph |
| 279D3/289D3 | 13.3 km/h | 8.3 mph |
| 299D3/299D3 XE | 13.5 km/h | 8.4 mph |

239D3/249D3/259D3/279D3/289D3/299D3/299D3 XE

Compact Track Loaders Specifications

Operating Specifications*

Rated Operating Capacity at 35% Tipping Load

| | | |
|----------|---------|----------|
| 239D3 | 695 kg | 1,530 lb |
| 249D3 | 790 kg | 1,740 lb |
| 259D3 | 915 kg | 2,010 lb |
| 279D3 | 1010 kg | 2,220 lb |
| 289D3 | 1315 kg | 2,890 lb |
| 299D3 | 1580 kg | 3,480 lb |
| 299D3 XE | 1620 kg | 3,560 lb |

Rated Operating Capacity at 50% Tipping Load

| | | |
|----------|---------|----------|
| 239D3 | 995 kg | 2,185 lb |
| 249D3 | 1130 kg | 2,485 lb |
| 259D3 | 1305 kg | 2,870 lb |
| 279D3 | 1445 kg | 3,170 lb |
| 289D3 | 1880 kg | 4,130 lb |
| 299D3 | 2255 kg | 4,970 lb |
| 299D3 XE | 2315 kg | 5,085 lb |

Rated Operating Capacity with Optional Counterweight (at 50%)

| | | |
|----------|---------|----------|
| 239D3 | 1090 kg | 2,400 lb |
| 249D3 | 1225 kg | 2,700 lb |
| 259D3 | 1390 kg | 3,060 lb |
| 279D3 | 1540 kg | 3,390 lb |
| 289D3 | 1985 kg | 4,370 lb |
| 299D3 | 2380 kg | 5,240 lb |
| 299D3 XE | 2435 kg | 5,360 lb |

Tipping Load

| | | |
|----------|---------|-----------|
| 239D3 | 1985 kg | 4,370 lb |
| 249D3 | 2260 kg | 4,970 lb |
| 259D3 | 2610 kg | 5,745 lb |
| 279D3 | 2885 kg | 6,345 lb |
| 289D3 | 3750 kg | 8,255 lb |
| 299D3 | 4520 kg | 9,945 lb |
| 299D3 XE | 4625 kg | 10,170 lb |

Breakout Force, Tilt Cylinder

| | | |
|----------|---------|----------|
| 239D3 | 1800 kg | 3,968 lb |
| 249D3 | 1797 kg | 3,962 lb |
| 259D3 | 2283 kg | 5,034 lb |
| 279D3 | 3304 kg | 7,285 lb |
| 289D3 | 3307 kg | 7,291 lb |
| 299D3 | 3298 kg | 7,270 lb |
| 299D3 XE | 3298 kg | 7,270 lb |

Continued

Operating Specifications* (Continued)

Ground Contact Area

| | | |
|--------------------------------------|---------------------|-----------------------|
| 239D3 (with 320 mm/12.6 in track) | 0.89 m ² | 1,373 in ² |
| 239D3 (with 400 mm/15.7 in track) | 1.11 m ² | 1,716 in ² |
| 249D3 (with 320 mm/12.6 in track) | 0.89 m ² | 1,373 in ² |
| 249D3 (with 400 mm/15.7 in track) | 1.11 m ² | 1,716 in ² |
| 259D3 (with 320 mm/12.6 in track) | 0.96 m ² | 1,483 in ² |
| 259D3 (with 400 mm/15.7 in track) | 1.19 m ² | 1,848 in ² |
| 279D3 (with 450 mm/17.7 in track) | 1.47 m ² | 2,272 in ² |
| 289D3 (with 450 mm/17.7 in track) | 1.47 m ² | 2,272 in ² |
| 299D3 (with 400 mm/17.7 in track) | 1.40 m ² | 2,171 in ² |
| 299D3 (with 450 mm/17.7 in track) | 1.58 m ² | 2,443 in ² |
| 299D3 XE (with 400 mm/17.7 in track) | 1.40 m ² | 2,171 in ² |
| 299D3 XE (with 450 mm/17.7 in track) | 1.58 m ² | 2,443 in ² |

Ground Pressure

| | | |
|--------------------------------------|----------|---------|
| 239D3 (with 320 mm/12.6 in track) | 37.3 kPa | 5.4 psi |
| 239D3 (with 400 mm/15.7 in track) | 30.6 kPa | 4.4 psi |
| 249D3 (with 320 mm/12.6 in track) | 39.3 kPa | 5.7 psi |
| 249D3 (with 400 mm/15.7 in track) | 32.2 kPa | 4.7 psi |
| 259D3 (with 320 mm/12.6 in track) | 41.8 kPa | 6.1 psi |
| 259D3 (with 400 mm/15.7 in track) | 34.0 kPa | 4.9 psi |
| 279D3 (with 450 mm/17.7 in track) | 30.4 kPa | 4.4 psi |
| 289D3 (with 450 mm/17.7 in track) | 32.2 kPa | 4.7 psi |
| 299D3 (with 400 mm/17.7 in track) | 36.4 kPa | 5.3 psi |
| 299D3 (with 450 mm/17.7 in track) | 32.2 kPa | 4.7 psi |
| 299D3 XE (with 400 mm/17.7 in track) | 37.3 kPa | 5.4 psi |
| 299D3 XE (with 450 mm/17.7 in track) | 33 kPa | 4.8 psi |

239D3/249D3/259D3/279D3/289D3/299D3/299D3 XE

Compact Track Loaders Specifications

Hydraulic System – 239D3 and 249D3

Hydraulic Flow – Standard

| | | |
|------------------------------|------------|------------|
| Loader Hydraulic Pressure | 23 000 kPa | 3,336 psi |
| Loader Hydraulic Flow | 69 L/min | 18 gal/min |
| Hydraulic Power (calculated) | 26.5 kW | 35.5 hp |

Hydraulic Flow – High Flow

| | | |
|-----------------------------------|------------|------------|
| Maximum Loader Hydraulic Pressure | 23 000 kPa | 3,336 psi |
| Maximum Loader Hydraulic Flow | 99 L/min | 26 gal/min |
| Hydraulic Power (calculated) | 38.0 kW | 50.9 hp |

Hydraulic System – 259D3

Hydraulic Flow – Standard

| | | |
|------------------------------|------------|------------|
| Loader Hydraulic Pressure | 23 000 kPa | 3,336 psi |
| Loader Hydraulic Flow | 76 L/min | 20 gal/min |
| Hydraulic Power (calculated) | 29 kW | 39 hp |

Hydraulic Flow – High Flow

| | | |
|-----------------------------------|------------|------------|
| Maximum Loader Hydraulic Pressure | 23 000 kPa | 3,336 psi |
| Maximum Loader Hydraulic Flow | 112 L/min | 30 gal/min |
| Hydraulic Power (calculated) | 43 kW | 58 hp |

Hydraulic System – 279D3 and 289D3

Hydraulic Flow – Standard

| | | |
|------------------------------|------------|------------|
| Loader Hydraulic Pressure | 23 000 kPa | 3,336 psi |
| Loader Hydraulic Flow | 86 L/min | 23 gal/min |
| Hydraulic Power (calculated) | 33 kW | 44 hp |

Hydraulic Flow – High Flow XPS

| | | |
|-----------------------------------|------------|------------|
| Maximum Loader Hydraulic Pressure | 28 000 kPa | 4,061 psi |
| Maximum Loader Hydraulic Flow | 121 L/min | 32 gal/min |
| Hydraulic Power (calculated) | 57 kW | 76 hp |

Hydraulic System – 299D3

Hydraulic Flow – Standard

| | | |
|------------------------------|------------|------------|
| Loader Hydraulic Pressure | 23 000 kPa | 3,335 psi |
| Loader Hydraulic Flow | 86 L/min | 23 gal/min |
| Hydraulic Power (calculated) | 33 kW | 44 hp |

Hydraulic Flow – High Flow XPS

| | | |
|-----------------------------------|------------|------------|
| Maximum Loader Hydraulic Pressure | 28 000 kPa | 4,061 psi |
| Maximum Loader Hydraulic Flow | 121 L/min | 32 gal/min |
| Hydraulic Power (calculated) | 57 kW | 76 hp |

Hydraulic System – 299D3 XE

Hydraulic Flow – Standard

| | | |
|------------------------------|------------|------------|
| Loader Hydraulic Pressure | 23,000 kPa | 3,335 psi |
| Loader Hydraulic Flow | 86 L/min | 23 gal/min |
| Hydraulic Power (calculated) | 33 kW | 44 hp |

Hydraulic Flow – XE

| | | |
|-----------------------------------|------------|------------|
| Maximum Loader Hydraulic Pressure | 28,000 kPa | 4,061 psi |
| Maximum Loader Hydraulic Flow* | 150 L/min | 40 gal/min |
| Hydraulic Power (calculated) | 70 kW | 94 hp |

*When equipped with Cat 400 Series work tools.

239D3/249D3/259D3/279D3/289D3/299D3/299D3 XE

Compact Track Loaders Specifications

Noise Level

Inside Cab**

| | |
|--------------------------------------|----------|
| 239D3, 249D3, 259D3, 299D3, 299D3 XE | 83 dB(A) |
| 279D3, 289D3 | 81 dB(A) |

Outside Cab***

| | |
|----------------------------------|-----------|
| 239D3, 249D3, 259D3, 279D3, 289D | 103 dB(A) |
| 299D3, 299D3 XE | 104 dB(A) |

**The declared dynamic operator sound pressure levels per ISO 6396:2008. The measurements were conducted with the cab doors and windows closed and at 70% of the maximum engine cooling fan speed. The sound level may vary at different engine cooling fan speeds.

***The labeled sound power level for the CE marked configurations when measured according to the test procedure and conditions specified in 2000/14/EC.

Cab

| | |
|------|-----------------------|
| ROPS | ISO 3471:2008 |
| FOPS | ISO 3449:2005 Level I |

Air Conditioning System

The air conditioning system on the 239D3, 249D3, 259D3, 299D3 and 299D3 XE contains the fluorinated greenhouse gas refrigerant R134a (Global Warming Potential = 1430). The system contains 0.81 kg of refrigerant which has a CO₂ equivalent of 1.158 metric tonnes.

The air conditioning system on the 279D3 and 289D3 contains the fluorinated greenhouse gas refrigerant R134a (Global Warming Potential = 1430). The system contains 1.0 kg of refrigerant which has a CO₂ equivalent of 1.430 metric tonnes.

Service Refill Capacities

Cooling System

| | | |
|----------------------------------|------|---------|
| 239D3/249D3 | 12 L | 3.2 gal |
| 259D3/279D3/289D3/299D3/299D3 XE | 14 L | 3.7 gal |
| 299D3/299D3 XE | 16 L | 4.1 gal |

Engine Crankcase

| | | |
|-------------------|------|---------|
| 239D3/249D3 | 10 L | 2.6 gal |
| 259D3/279D3/289D3 | 11 L | 3.0 gal |
| 299D3/299D3 XE | 13 L | 3.5 gal |

Fuel Tank

| | | |
|----------------|-------|----------|
| 239D3/249D3 | 57 L | 15.1 gal |
| 259D3 | 94 L | 24.8 gal |
| 279D3/289D3 | 105 L | 27.7 gal |
| 299D3/299D3 XE | 120 L | 31.7 gal |

Hydraulic System

| | | |
|----------------|------|----------|
| 239D3/249D3 | 45 L | 11.9 gal |
| 259D3 | 50 L | 13.2 gal |
| 279D3/289D3 | 52 L | 13.7 gal |
| 299D3/299D3 XE | 55 L | 14.5 gal |

Hydraulic Tank

| | | |
|----------------------------------|------|----------|
| 239D3/249D3 | 34 L | 9.0 gal |
| 259D3/279D3/289D3/299D3/299D3 XE | 39 L | 10.3 gal |

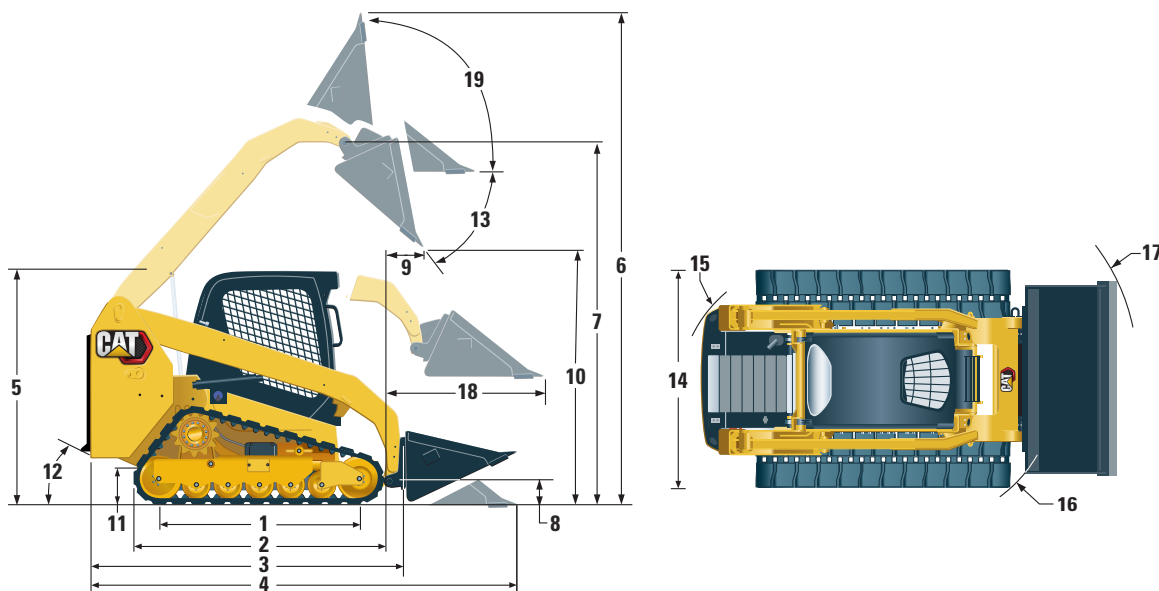
Diesel Exhaust Fluid (DEF) Tank

| | | |
|----------------|------|---------|
| 299D3/299D3 XE | 19 L | 5.0 gal |
|----------------|------|---------|

239D3 Compact Track Loaders Specifications

Dimensions*

All dimensions are approximate.



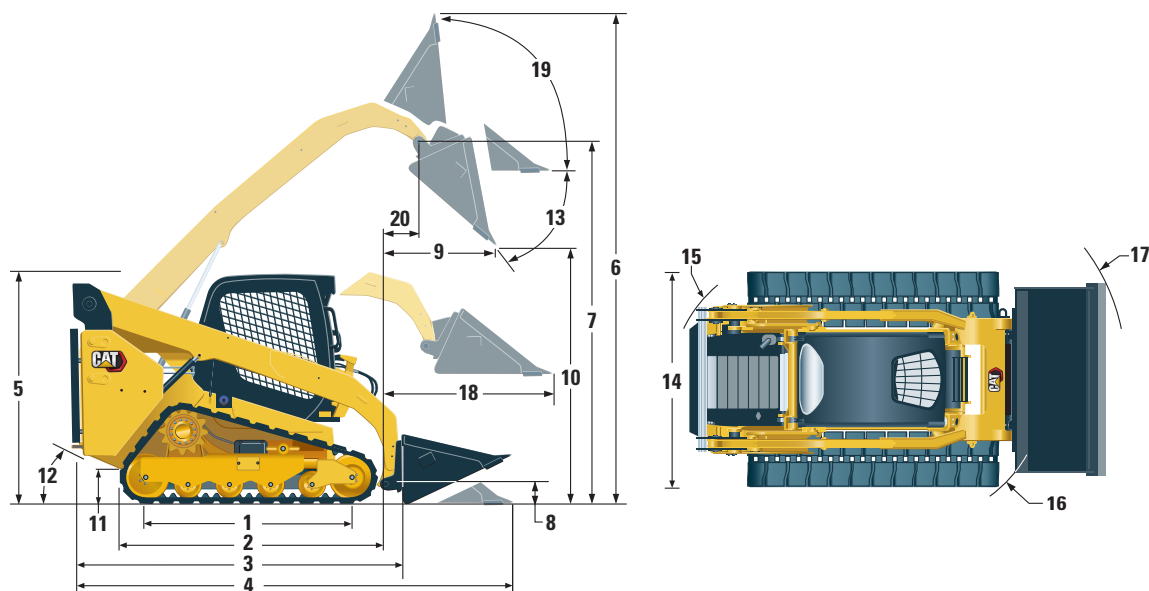
| 239D3 | | |
|---|---------|----------|
| 1 Length of Track on Ground | 1384 mm | 54.5 in |
| 2 Overall Length of Track | 1808 mm | 71.2 in |
| 3 Length without Bucket | 2522 mm | 99.3 in |
| 4 Length with Bucket on Ground | 3234 mm | 127.3 in |
| 5 Height to Top of Cab | 2034 mm | 80.1 in |
| 6 Maximum Overall Height | 3645 mm | 143.5 in |
| 7 Bucket Pin Height at Maximum Lift | 2825 mm | 111.2 in |
| 8 Bucket Pin Height at Carry Position | 218 mm | 8.6 in |
| 9 Reach at Maximum Lift and Dump | 563 mm | 22.2 in |
| 10 Clearance at Maximum Lift and Dump | 2057 mm | 81.0 in |
| 11 Ground Clearance | 195 mm | 7.7 in |
| 12 Departure Angle | 34.5° | |
| 13 Maximum Dump Angle | 50.3° | |
| 14 Vehicle Width (320 mm/12.6 in tracks) | 1676 mm | 66.0 in |
| Vehicle Width (400 mm/15.7 in tracks) | 1756 mm | 69.1 in |
| 15 Turning Radius from Center – Machine Rear | 1458 mm | 57.4 in |
| 16 Turning Radius from Center – Coupler | 1159 mm | 45.6 in |
| 17 Turning Radius from Center – Bucket | 2069 mm | 81.5 in |
| 18 Maximum Reach with Arms Parallel to Ground | 1356 mm | 53.4 in |
| 19 Rack Back Angle at Maximum Height | 85.5° | |

*Operating Weight, Operating Specifications and Dimensions all based on 75 kg (165 lb) operator, all fluids, 1730 mm (68 in) low profile bucket, 320 mm (12.6 in) tracks, standard flow hydraulics, C0 cab (OROPS, static seat), 850 CCA battery, manual quick coupler, no self level and no optional counterweights (unless otherwise noted).

249D3 Compact Track Loaders Specifications

Dimensions*

All dimensions are approximate.



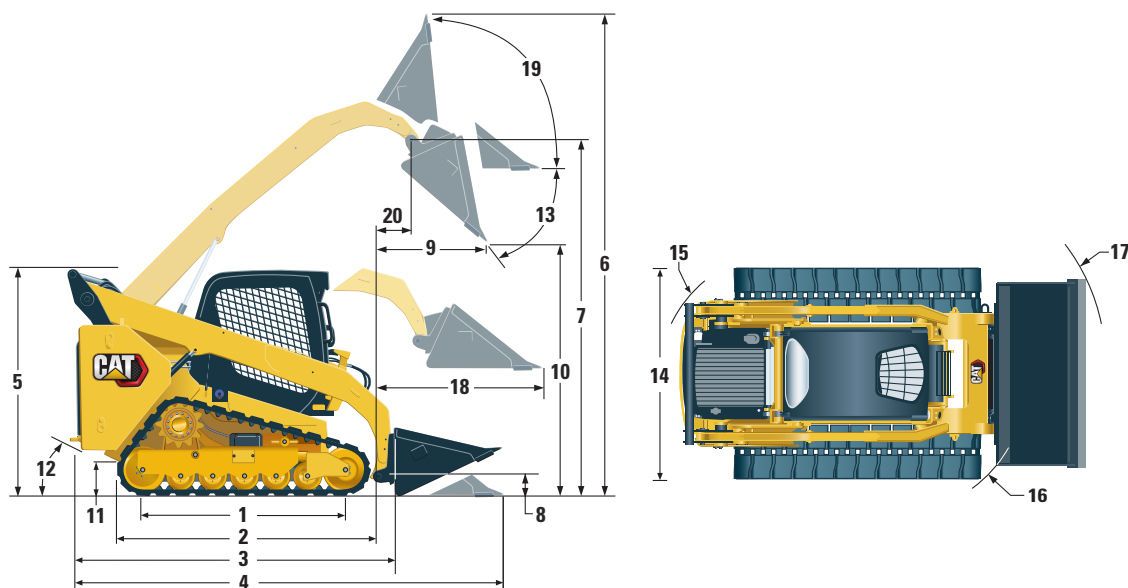
| | 249D3 | |
|---|---------|----------|
| 1 Length of Track on Ground | 1384 mm | 54.5 in |
| 2 Overall Length of Track | 1808 mm | 71.2 in |
| 3 Length without Bucket | 2523 mm | 99.3 in |
| 4 Length with Bucket on Ground | 3233 mm | 127.3 in |
| 5 Height to Top of Cab | 2039 mm | 80.3 in |
| 6 Maximum Overall Height | 3831 mm | 150.8 in |
| 7 Bucket Pin Height at Maximum Lift | 3002 mm | 118.2 in |
| 8 Bucket Pin Height at Carry Position | 219 mm | 8.6 in |
| 9 Reach at Maximum Lift and Dump | 727 mm | 28.6 in |
| 10 Clearance at Maximum Lift and Dump | 2253 mm | 88.7 in |
| 11 Ground Clearance | 194 mm | 7.6 in |
| 12 Departure Angle | 34.5° | |
| 13 Maximum Dump Angle | 48° | |
| 14 Vehicle Width (320 mm/12.6 in tracks) | 1676 mm | 66.0 in |
| Vehicle Width (400 mm/15.7 in tracks) | 1756 mm | 69.1 in |
| 15 Turning Radius from Center – Machine Rear | 1458 mm | 57.4 in |
| 16 Turning Radius from Center – Coupler | 1160 mm | 45.7 in |
| 17 Turning Radius from Center – Bucket | 2060 mm | 81.1 in |
| 18 Maximum Reach with Arms Parallel to Ground | 1317 mm | 51.8 in |
| 19 Rack Back Angle at Maximum Height | 87.5° | |
| 20 Bucket Pin Reach at Maximum Lift | 311 mm | 12.2 in |

*Operating Weight, Operating Specifications and Dimensions all based on 75 kg (165 lb) operator, all fluids, 1730 mm (68 in) low profile bucket, 320 mm (12.6 in) tracks, standard flow hydraulics, C0 cab (OROPS, static seat), 850 CCA battery, manual quick coupler, no self level and no optional counterweights (unless otherwise noted).

259D3/289D3 Compact Track Loaders Specifications

Dimensions*

All dimensions are approximate.



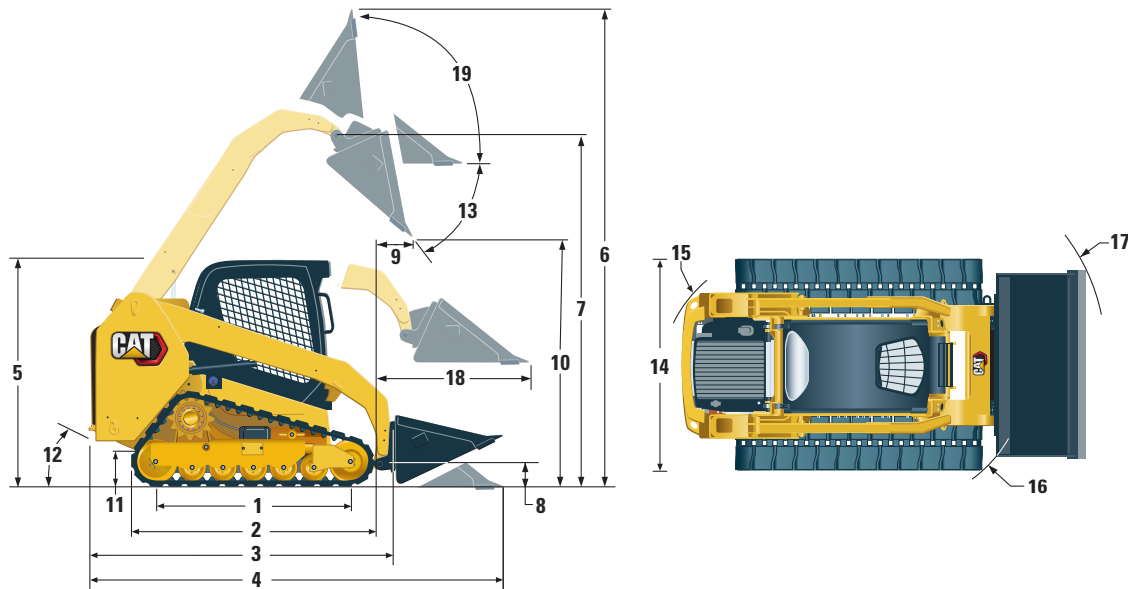
| | 259D3 | | 289D3 | |
|--|---------|----------|---------|----------|
| 1 Length of Track on Ground | 1499 mm | 59.0 in | 1630 mm | 64.2 in |
| 2 Overall Length of Track | 1999 mm | 78.7 in | 2129 mm | 83.8 in |
| 3 Length without Bucket | 2767 mm | 108.9 in | 2995 mm | 117.9 in |
| 4 Length with Bucket on Ground | 3486 mm | 137.3 in | 3714 mm | 146.2 in |
| 5 Height to Top of Cab | 2111 mm | 83.1 in | 2113 mm | 83.2 in |
| 6 Maximum Overall Height | 3915 mm | 154.1 in | 4051 mm | 159.5 in |
| 7 Bucket Pin Height at Maximum Lift | 3075 mm | 121.0 in | 3178 mm | 125.1 in |
| 8 Bucket Pin Height at Carry Position | 198 mm | 7.8 in | 190 mm | 7.5 in |
| 9 Reach at Maximum Lift and Dump | 608 mm | 23.9 in | 761 mm | 30.0 in |
| 10 Clearance at Maximum Lift and Dump | 2283 mm | 89.9 in | 2387 mm | 94.0 in |
| 11 Ground Clearance | 226 mm | 8.9 in | 226 mm | 8.9 in |
| 12 Departure Angle | 35° | | 33° | |
| 13 Maximum Dump Angle | 52° | | 51° | |
| 14 Vehicle Width (320 mm/12.6 in tracks) – 259D only | 1676 mm | 66.0 in | N/A | |
| Vehicle Width (400 mm/15.7 in tracks) – 259D/289D | 1755 mm | 69.0 in | 1931 mm | 76.0 in |
| Vehicle Width (450 mm/17.7 in tracks) – 289D only | N/A | | 1981 mm | 78.0 in |
| 15 Turning Radius from Center – Machine Rear | 1561 mm | 61.5 in | 1796 mm | 70.7 in |
| 16 Turning Radius from Center – Coupler | 1392 mm | 54.8 in | 1410 mm | 55.5 in |
| 17 Turning Radius from Center – Bucket | 2184 mm | 86.0 in | 2256 mm | 88.8 in |
| 18 Maximum Reach with Arms Parallel to Ground | 1305 mm | 51.4 in | 1270 mm | 50.0 in |
| 19 Rack Back Angle at Maximum Height | 87° | | 84° | |
| 20 Bucket Pin Reach at Maximum Lift | 238 mm | 9.4 in | 369 mm | 14.5 in |

*Operating Weight, Operating Specifications and Dimensions for the 259D3 and 289D3 all based on 75 kg (165 lb) operator, all fluids, two speed, OROPS, 1730 mm (68 in) low profile bucket for the 259D3 and 80" low profile bucket for the 289D3, 320 mm (12.6 in) tracks for the 259D3 or 450 mm (17.7 in) tracks for the 289D3, dual flange front idler/single flange rear idler, standard flow hydraulics, mechanical suspension seat, no optional counterweights and manual quick coupler (unless otherwise noted).

279D3 Compact Track Loaders Specifications

Dimensions*

All dimensions are approximate.



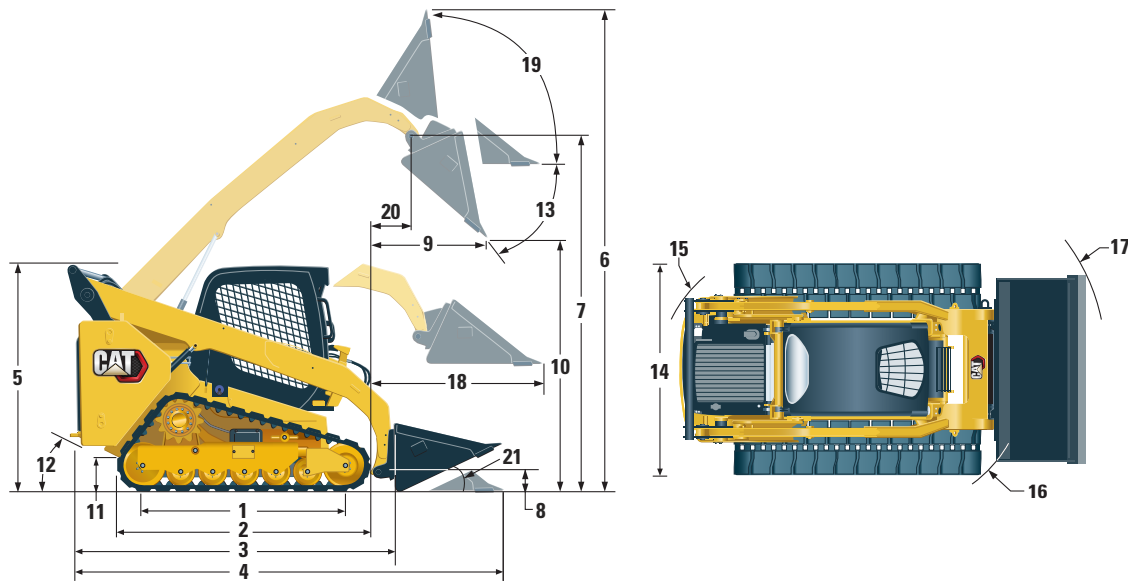
| 279D3 | | |
|---|---------|----------|
| 1 Length of Track on Ground | 1630 mm | 64.2 in |
| 2 Overall Length of Track | 2129 mm | 83.8 in |
| 3 Length without Bucket | 2995 mm | 117.9 in |
| 4 Length with Bucket on Ground | 3714 mm | 146.2 in |
| 5 Height to Top of Cab | 2113 mm | 83.2 in |
| 6 Maximum Overall Height | 4051 mm | 159.5 in |
| 7 Bucket Pin Height at Maximum Lift | 3173 mm | 124.9 in |
| 8 Bucket Pin Height at Carry Position | 198 mm | 7.8 in |
| 9 Reach at Maximum Lift and Dump | 575 mm | 22.6 in |
| 10 Clearance at Maximum Lift and Dump | 2485 mm | 97.8 in |
| 11 Ground Clearance | 226 mm | 8.9 in |
| 12 Departure Angle | 32° | |
| 13 Maximum Dump Angle | 39° | |
| 14 Vehicle Width (400 mm/15.7 in tracks) | 1931 mm | 76.0 in |
| Vehicle Width (450 mm/17.7 in tracks) | 1981 mm | 78.0 in |
| 15 Turning Radius from Center – Machine Rear | 1796 mm | 70.7 in |
| 16 Turning Radius from Center – Coupler | 1410 mm | 55.5 in |
| 17 Turning Radius from Center – Bucket | 2256 mm | 88.8 in |
| 18 Maximum Reach with Arms Parallel to Ground | 1373 mm | 54.0 in |
| 19 Rack Back Angle at Maximum Height | 84° | |

*Operating Weight, Operating Specifications and Dimensions all based on 75 kg (165 lb) operator, all fluids, two speed, OROPS, 2036 mm (80 in) low profile bucket, 450 mm (17.7 in) tracks, dual flange front idler/single flange rear idler, standard flow hydraulics, mechanical suspension seat, no optional counterweights and manual quick coupler (unless otherwise noted).

299D3/299D3 XE Compact Track Loaders Specifications

Dimensions*

All dimensions are approximate.



| 299D3/299D3 XE | | |
|--|---------|----------|
| 1 Length of Track on Ground | 1767 mm | 69.6 in |
| 2 Overall Length of Track | 2270 mm | 89.4 in |
| 3 Length without Bucket | 3189 mm | 125.5 in |
| 4 Length with Bucket on Ground | 3931 mm | 154.7 in |
| 5 Height to Top of Cab | 2125 mm | 83.6 in |
| 6 Maximum Overall Height | 4032 mm | 158.7 in |
| 7 Bucket Pin Height at Maximum Lift | 3208 mm | 126.3 in |
| 8 Bucket Pin Height at Carry Position | 180 mm | 7.1 in |
| 9 Reach at Maximum Lift and Dump | 852 mm | 33.6 in |
| 10 Clearance at Maximum Lift and Dump | 2399 mm | 94.5 in |
| 11 Ground Clearance | 245 mm | 9.6 in |
| 12 Departure Angle | 33° | |
| 13 Maximum Dump Angle | 54° | |
| 14 Vehicle Width over Tires (400 mm/15.7 in tracks) | 1931 mm | 76.0 in |
| Vehicle Width over Tires (450 mm/17.7 in tracks) – 299D3 XE only | 1981 mm | 78.0 in |
| 15 Turning Radius from Center – Machine Rear | 1881 mm | 74.0 in |
| 16 Turning Radius from Center – Coupler | 1476 mm | 58.1 in |
| 17 Turning Radius from Center – Bucket (racked) | 2314 mm | 91.1 in |
| 18 Maximum Reach with Arms Parallel to Ground | 1319 mm | 51.9 in |
| 19 Rack Back Angle at Maximum Height | 81° | |
| 20 Bucket Pin Reach at Maximum Lift | 493 mm | 19.4 in |
| 21 Roll Back Angle | 25° | |

*Operating Weight, Operating Specifications and Dimensions all based on 75 kg (165 lb) operator, all fluids, two speed, ride control, enclosed cab with glass door, side windows, air conditioning, air ride seat, advanced display, rearview camera, 850 CCA battery (299D3) and 1,000 CCA battery (299D3 XE), dual direction self level (299D3 XE), 2036 mm (80 in) low profile bucket, 400 mm (15.7 in) tracks, dual flange front idler/singe flange rear idler (299D3) triple flange front/rear idlers (299D3 XE), no optional counterweights and manual quick coupler (unless otherwise noted).

239D3/249D3/259D3/279D3/289D3/299D3/299D3 XE

Feature Availability

 **Standard**

 **Optional**

 **Not Available**

| Electrical | 239D3 | 249D3 | 259D3 | 279D3 | 289D3 | 299D3 | 299D3 XE |
|--|--------------|--------------|--------------|--------------|--------------|--------------|-----------------|
| 12V Electrical System | ● | ● | ● | ● | ● | ● | ● |
| 80 Ampere Alternator | ● | ● | ● | ● | ● | ● | ● |
| Ignition Key Start/Stop Switch | ● | ● | ● | ● | ● | ● | ● |
| Lights: Gauge Backlighting, Two Rear Tail Lights, Two Rear Halogen Working Lights, Two Adjustable Front Halogen Lights, Dome Light | ● | ● | ● | ● | ● | ● | ● |
| Lights: Two Rear LED Working Lights, Two Adjustable Front LED Lights | ◐ | ◐ | ◐ | ◐ | ◐ | ◐ | ◐ |
| Lights: Rear, with STOP/TAIL/TURN | ◐ | ◐ | ◐ | ◐ | ◐ | ◐ | ◐ |
| Lights: Rear, with STOP/TAIL/TURN. Front Headlights. Front Mirrors. | ◐ | ◐ | ◐ | ◐ | ◐ | ◐ | ◐ |
| Backup Alarm | ● | ● | ● | ● | ● | ● | ● |
| Heavy Duty Battery, 850 CCA | ● | ● | ● | ● | ● | ● | ● |
| Heavy Duty Battery, 1000 CCA | ○ | ○ | ○ | ○ | ◐ | ◐ | ● |
| Top and Rear Windows | ● | ● | ● | ● | ● | ● | ● |
| Floor mat | ● | ● | ● | ● | ● | ● | ● |
| Interior Rearview Mirror | ● | ● | ● | ● | ● | ● | ● |
| 12 Volt Electric Socket | ● | ● | ○ | ○ | ○ | ○ | ○ |
| USB Charging Port (bundled with Advanced Display option only) | ◐ | ◐ | ● | ● | ● | ● | ● |
| Horn | ● | ● | ● | ● | ● | ● | ● |
| Hand (Dial) Throttle, Electronic | ● | ● | ● | ● | ● | ● | ● |
| Adjustable Joystick Controls (Selectable at Dealer: ISO or H-Pattern) | ● | ● | ● | ● | ● | ● | ● |
| Adjustable Joystick Controls (Selectable In-Cab: ISO or H-Pattern) | ◐ | ◐ | ◐ | ◐ | ◐ | ◐ | ◐ |
| Hand and Foot Controls | ◐ | ◐ | ◐ | ◐ | ◐ | ○ | ○ |
| Anti-theft Security System with six-button Keypad | ● | ● | ● | ● | ● | ● | ● |
| Storage Compartment with Netting | ● | ● | ● | ● | ● | ● | ● |
| Engine Block Heater – 120V | ◐ | ◐ | ◐ | ◐ | ◐ | ◐ | ◐ |

(continued on next page)

239D3/249D3/259D3/279D3/289D3/299D3/299D3 XE

Feature Availability

| <div><div></div></div> Standard | <div><div></div></div> Optional | <div><div></div></div> Not Available | | | | | | |
|--|---------------------------------|--------------------------------------|-------------|-------------|-------------|-------------|-------------|-------------|
| Operator Environment | | 239D3 | 249D3 | 259D3 | 279D3 | 289D3 | 299D3 | 299D3 XE |
| Gauges: Fuel Level, Hour Meter | | <div></div> | <div></div> | <div></div> | <div></div> | <div></div> | <div></div> | <div></div> |
| Operator Warning System Indicators: Air Filter Restriction, Alternator Output, Armrest Raised/Operator Out of Seat, Engine Coolant Temperature, Engine Oil Pressure, Glow Plug Activation, Hydraulic Filter Restriction, Hydraulic Oil Temperature, Park Brake Engaged, Engine Emission System | | <div></div> | <div></div> | <div></div> | <div></div> | <div></div> | <div></div> | <div></div> |
| Adjustable Vinyl Seat | | <div></div> | <div></div> | <div></div> | <div></div> | <div></div> | <div></div> | <div></div> |
| Adjustable Vinyl Seat with Suspension | | <div></div> | <div></div> | <div></div> | <div></div> | <div></div> | <div></div> | <div></div> |
| Adjustable Vinyl Seat with Air Suspension and Heat | | <div></div> | <div></div> | <div></div> | <div></div> | <div></div> | <div></div> | <div></div> |
| Adjustable Cloth Seat with Air Suspension and Heat | | <div></div> | <div></div> | <div></div> | <div></div> | <div></div> | <div></div> | <div></div> |
| Fold In Ergonomic Contoured Armrest | | <div></div> | <div></div> | <div></div> | <div></div> | <div></div> | <div></div> | <div></div> |
| Seat Belt: High Visibility 2" | | <div></div> | <div></div> | <div></div> | <div></div> | <div></div> | <div></div> | <div></div> |
| Seat Belt: High Visibility 3" | | <div></div> | <div></div> | <div></div> | <div></div> | <div></div> | <div></div> | <div></div> |
| Control Interlock System, when operator leaves seat or armrest raised: Hydraulic System Disables, Hydrostatic Transmission Disables, Parking Brake Engages | | <div></div> | <div></div> | <div></div> | <div></div> | <div></div> | <div></div> | <div></div> |
| Rops Cab, Open, Tilt Up | | <div></div> | <div></div> | <div></div> | <div></div> | <div></div> | <div></div> | <div></div> |
| Fops, Level I | | <div></div> | <div></div> | <div></div> | <div></div> | <div></div> | <div></div> | <div></div> |
| Advanced Display: Full Color, 127 mm (5 in) LCD screen, Advanced Multi-operator Security System, On-screen Adjustments for Implement Response, Hystat Response, and Creep Control; Rearview Camera Included | | <div></div> | <div></div> | <div></div> | <div></div> | <div></div> | <div></div> | <div></div> |
| Radio Ready with Speakers, Wiring, Radio Box, Antenna and Cable, and hardware for installing single DIN radio | | <div></div> | <div></div> | <div></div> | <div></div> | <div></div> | <div></div> | <div></div> |
| Bluetooth Radio with Microphone (AM/FM/Weather Band Receiver with USB and Auxiliary Input Jack) | | <div></div> | <div></div> | <div></div> | <div></div> | <div></div> | <div></div> | <div></div> |
| Powertrain and Performance | | 239D3 | 249D3 | 259D3 | 279D3 | 289D3 | 299D3 | 299D3 XE |
| Cat® C2.2, Turbo Diesel Engine, Meeting U.S. EPA Tier 4 Final and EU Stage IIIB Emissions Standards | | <div></div> | <div></div> | <div></div> | <div></div> | <div></div> | <div></div> | <div></div> |
| Cat C3.3B, Turbo Diesel Engine, Meeting U.S. EPA Tier 4 Final and EU Stage V Emissions Standards | | <div></div> | <div></div> | <div></div> | <div></div> | <div></div> | <div></div> | <div></div> |
| Cat C3.8, Turbo Diesel Engine, Meeting U.S. EPA Tier 4 Final and EU Stage IV Emissions Standards | | <div></div> | <div></div> | <div></div> | <div></div> | <div></div> | <div></div> | <div></div> |
| Air Cleaner, Dual Element, Radial Seal | | <div></div> | <div></div> | <div></div> | <div></div> | <div></div> | <div></div> | <div></div> |
| S-O-S™ Sampling Valve, Hydraulic Oil | | <div></div> | <div></div> | <div></div> | <div></div> | <div></div> | <div></div> | <div></div> |
| Filter, Cartridge-type, Hydraulic | | <div></div> | <div></div> | <div></div> | <div></div> | <div></div> | <div></div> | <div></div> |
| Filters, Canister-type Fuel and Water Separator | | <div></div> | <div></div> | <div></div> | <div></div> | <div></div> | <div></div> | <div></div> |
| Radiator/Hydraulic Oil Cooler (side-by-side) | | <div></div> | <div></div> | <div></div> | <div></div> | <div></div> | <div></div> | <div></div> |
| Spring Applied, Hydraulically Released Parking Brakes | | <div></div> | <div></div> | <div></div> | <div></div> | <div></div> | <div></div> | <div></div> |
| Two Speed Travel | | <div></div> | <div></div> | <div></div> | <div></div> | <div></div> | <div></div> | <div></div> |
| Hydrostatic Transmission | | <div></div> | <div></div> | <div></div> | <div></div> | <div></div> | <div></div> | <div></div> |

(continued on next page)

239D3/249D3/259D3/279D3/289D3/299D3/299D3 XE

Feature Availability

● Standard

◐ Optional

○ Not Available

| Other | 239D3 | 249D3 | 259D3 | 279D3 | 289D3 | 299D3 | 299D3 XE |
|---|-------|-------|-------|-------|-------|-------|----------|
| Engine Enclosure, Lockable | ● | ● | ● | ● | ● | ● | ● |
| Extended Life Antifreeze, -36° C (-33° F) | ● | ● | ● | ● | ● | ● | ● |
| Cat HYDO™ Advance Hydraulic Oil, -20° C (-4° F) Min | ● | ● | ● | ● | ● | ● | ● |
| Cat Cold Operation Hydraulic Oil, -40° C (-40° F) Min | ◐ | ◐ | ◐ | ◐ | ◐ | ◐ | ◐ |
| Machine Tie Down Points (6) | ● | ● | ● | ● | ● | ● | ● |
| Support, Lift Arm | ● | ● | ● | ● | ● | ● | ● |
| Hydraulic Oil Level Sight Gauge | ● | ● | ● | ● | ● | ● | ● |
| Radiator Coolant Level Sight Gauge | ● | ● | ● | ● | ● | ● | ● |
| Radiator, Expansion Bottle | ● | ● | ● | ● | ● | ● | ● |
| Cat ToughGuard™ Hose | ● | ● | ● | ● | ● | ● | ● |
| Auxiliary, Hydraulics, Continuous Flow | ● | ● | ● | ● | ● | ● | ● |
| Heavy Duty, Flat Faced Quick Disconnects with Integrated Pressure Release | ● | ● | ● | ● | ● | ● | ● |
| Split D-Ring to Route Work Tool Hoses Along Side of Left Lift Arm | ● | ● | ● | ● | ● | ● | ● |
| Worktool Quick Coupler: Manual | ● | ● | ● | ● | ● | ● | ● |
| Worktool Quick Coupler: Hydraulic | ◐ | ◐ | ◐ | ◐ | ◐ | ◐ | ◐ |
| Electrical Outlet, Beacon | ● | ● | ● | ● | ● | ● | ● |
| Beacon, Rotating | ◐ | ◐ | ◐ | ◐ | ◐ | ◐ | ◐ |
| Belly Pan Cleanout | ● | ● | ● | ● | ● | ● | ● |
| Variable Speed Demand Fan | ● | ● | ● | ● | ● | ● | ● |
| Variable Speed Demand Fan: Reversing | ○ | ○ | ◐ | ◐ | ◐ | ◐ | ◐ |
| Product Link PL243, Cellular | ● | ● | ● | ● | ● | ● | ● |
| Product Link PL641, Cellular | ◐ | ◐ | ◐ | ◐ | ◐ | ◐ | ◐ |
| Paint, Custom | ◐ | ◐ | ◐ | ◐ | ◐ | ◐ | ◐ |
| Speed Sensitive Ride Control | ◐ | ◐ | ◐ | ◐ | ◐ | ◐ | ● |
| Work Tool Return to Dig and Work Tool Positioner | ◐ | ◐ | ◐ | ◐ | ◐ | ◐ | ● |

For more complete information on Cat products, dealer services, and industry solutions, visit us on the web at www.cat.com

© 2021 Caterpillar
All rights reserved

Materials and specifications are subject to change without notice. Featured machines in photos may include additional equipment. See your Cat dealer for available options.

CAT, CATERPILLAR, LET'S DO THE WORK, their respective logos, "Caterpillar Corporate Yellow," the "Power Edge" and Cat "Modern Hex" trade dress as well as corporate and product identity used herein, are trademarks of Caterpillar and may not be used without permission.

AEHQ8269-02 (01-2021)
Replaces AEHQ8269-01
(Am North, EU, APD,
ANZP, HRC)

