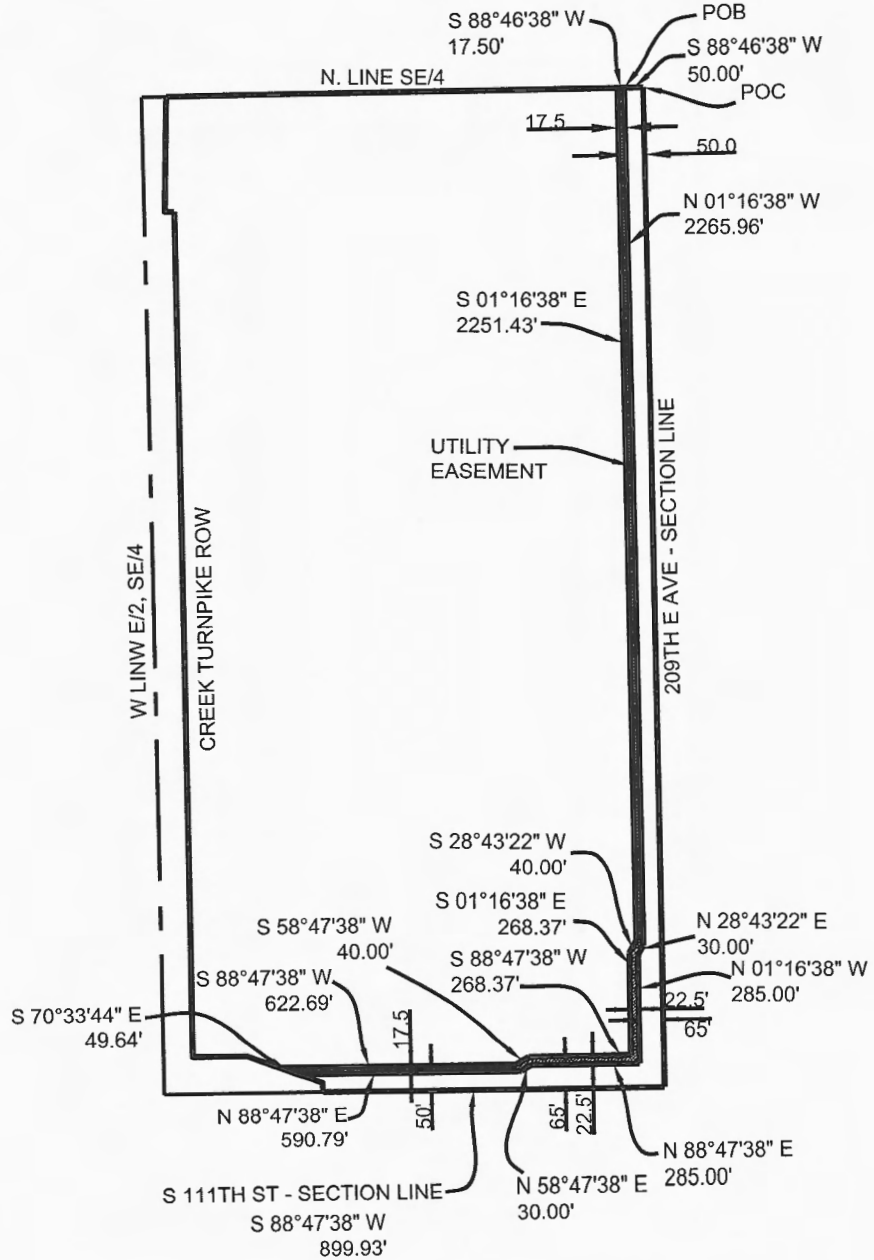
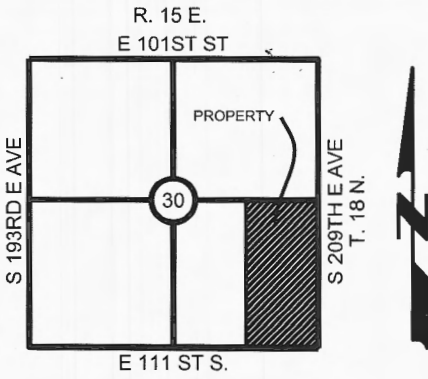


DESCRIPTION PLAT UTILITY EASEMENT



Notes:

1. The basis of bearing NAD 1983, Oklahoma North Zone
2. This is not a plat of survey. All corners have not been set.
3. This plat is for illustrative purposes only
4. See attached legal descriptions and certifications.



Utility Easement Description

Commencing at the Northeast corner of the Southeast Quarter of Section 30, Township 18 North, Range 15 East, Wagoner County, Oklahoma, according to the recorded Government plat thereof;

thence South 88°46'38" West along the North line of said Northeast corner of the Southeast Quarter of Section 30 a distance of 50.00 feet; to the Point of Beginning

thence South 88°46'38" West and continuing along the North line of said Northeast corner of the Southeast Quarter of Section 30 a distance of 17.50 feet;

thence South 01°16'38" East a distance of 2251.43 feet;

thence South 28°43'22" West a distance of 40.00 feet;

thence South 01°16'38" East a distance of 268.37 feet;

thence South 88°47'38" West a distance of 268.37 feet;

thence South 58°47'38" West a distance of 40.00 feet;

thence South 88°47'38" West a distance of 622.69 feet; to the East line of the Creek Turnpike

thence South 70°33'44" East a distance of 49.64 feet; along the East line of the Creek Turnpike

thence North 88°47'38" East a distance of 590.79 feet;

thence North 58°47'38" East a distance of 30.00 feet;

thence North 88°47'38" East a distance of 285.00 feet;

thence North 01°16'38" West a distance of 285.00 feet;

thence North 28°43'22" East a distance of 30.00 feet;

thence North 01°16'38" West a distance of 2265.96 feet; to the Point of Beginning;

containing 1.47 acres or 64166.14 square feet more or less.

Closing Reports

Lot Name: Utility Easement
 Lot Area (Square Feet): 64166.14
 Lot Area (Acres): 1.47
 Lot Perimeter: 7044.74

Course Data:(Mapcheck Through Radius Points Method)

Point	Northing	Easting	Direction	Distance
Begin	365627.1347	2628307.6752	S88°46'38"W	17.50
	365626.7613	2628290.1792	S01°16'38"E	2251.43
	363375.8906	2628340.3633	S28°43'22"W	40.00
	363340.8124	2628321.1404	S01°16'38"E	268.37
	363072.5091	2628327.1224	S88°47'38"W	268.37
	363066.8602	2628058.8118	S58°47'38"W	40.00
	363046.1354	2628024.5995	S88°47'38"W	622.69
	363033.0284	2627402.0474	S70°33'44"E	49.64
	363016.5090	2627448.8581	N88°47'38"E	590.79
	363028.9446	2628039.5172	N58°47'38"E	30.00
	363044.4882	2628065.1765	N88°47'38"E	285.00
	363050.4871	2628350.1133	N01°16'38"W	285.00
	363335.4163	2628343.7607	N28°43'22"E	30.00
	363361.7250	2628358.1779	N01°16'38"W	2265.96
End	365627.1220	2628307.6699		
Error of Closure		1 : 512199		
Departure in Y (Northing):		0.0127		
Departure in X (Easting):		0.0053`		