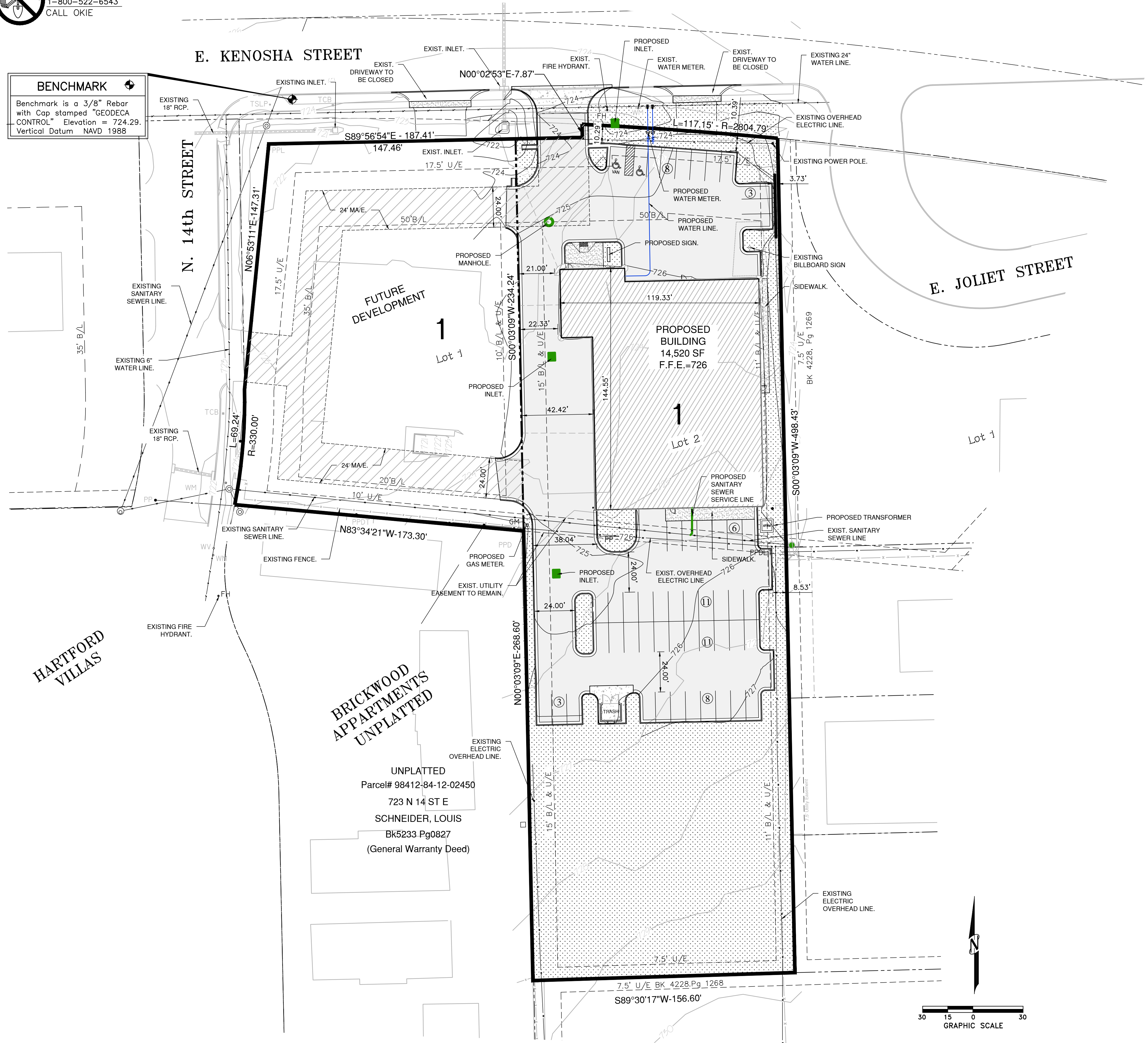
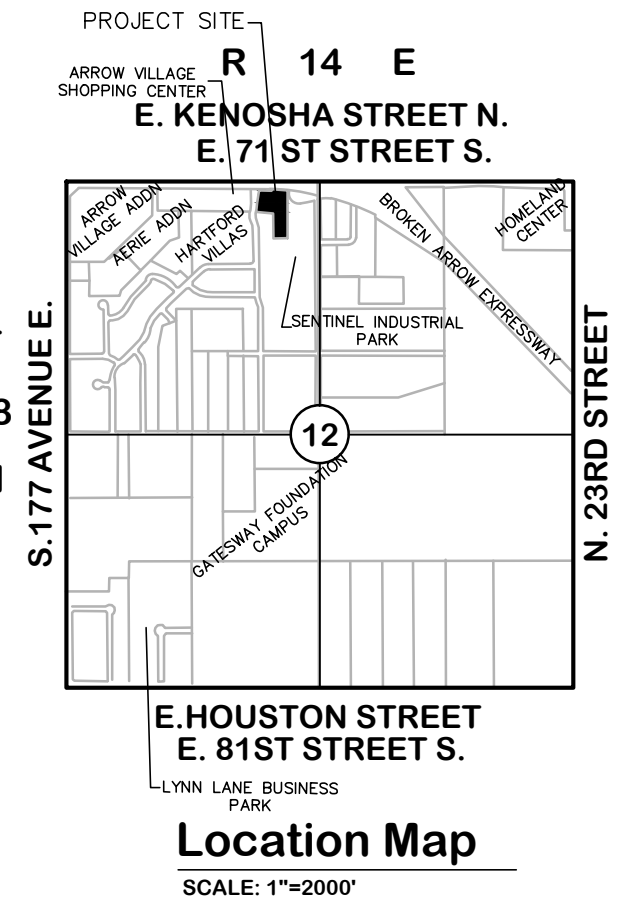
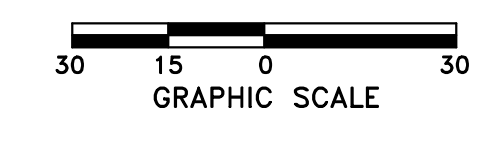


BENCHMARK
 Benchmark is a 3/8" Rebar with Cap stamped "GEODECA CONTROL" Elevation = 724.29 Vertical Datum NAVD 1988



LEGEND

	LANDSCAPE AREA
	CONCRETE SIDEWALK
	BUILDING AREA
	EXISTING CONTOUR
	PROPOSED CONTOUR



1 CONCEPTUAL IMPROVEMENT PLAN
 SCALE: 1"=30'

BRICKWOOD APARTMENTS UNPLATTED
 UNPLATTED
 Parcel# 98412-84-12-02450
 723 N 14 ST E
 SCHNEIDER, LOUIS
 Bk5233 Pg0827
 (General Warranty Deed)

HARTFORD VILLAS

PROJECT SITE: R 14 E E. KENOSHA STREET N. E. 71ST STREET S.	
E.HOUSTON STREET E. 81ST STREET S. LYNN LANE BUSINESS PARK Location Map SCALE: 1"=2000'	
5	No
4	Date
3	Revisions
2	By
1	Date
Eng'r Job #:	30356
Design by:	HS
Checked by:	MEE
Issued Date:	11-09-2015
Khoury Engineering, Inc. Civil Engineering - Land Development 1435 East 41st Street Tulsa, OK 74103 Tel: 918-712-8766 Fax: 918-712-1069 CA #3751, Renewal 06-30-16	
COLLISION WORKS SE corner of E. Kenosha street and N. 14th street CITY OF BROKEN ARROW - TULSA COUNTY - OKLAHOMA	
CONCEPTUAL IMPROVEMENT PLAN	
SHEET No.	C1