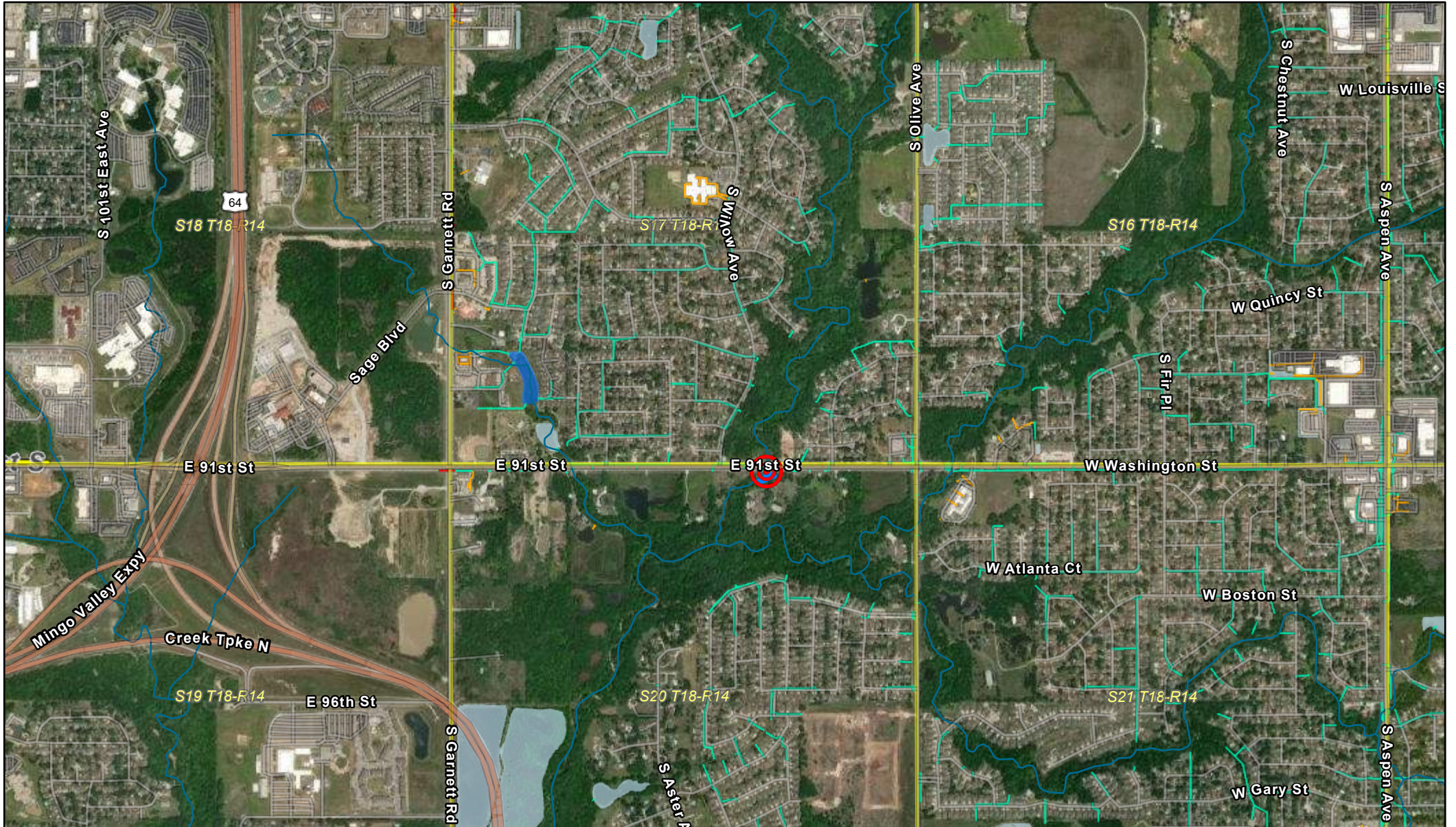


PROJECT REPORT

DATE:	01/14/2025
NAME	Sarah Walters, PE, CFM, Stormwater Project Manager, City of Broken Arrow
ADDRESS / LOCATION	12300 E 91 st St Broken Arrow, OK 74012
WATERSHED	Haikey
ESTIMATE	\$430,000.00 for construction
CASE NO.	24-002

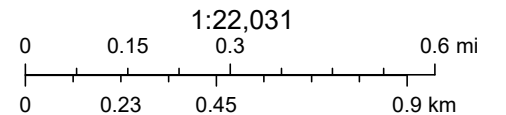
DESCRIPTION	
<p>The four-cell box culvert under Washington Ave (91st) near the Diocese of Tulsa in Broken Arrow was widened during the roadway widening project. The construction/widening of the boxes was completed, but the armoring did not take place. The armoring project was bid out by the City in 2021, but did not receive any bids.</p> <p>The culvert has silted in and is blocking flow in 3 of the boxes. This appears to be causing the flow through the one box to increase thereby increasing the normal velocity through the one cell.</p> <p>The increased velocity has caused the south bank of Haikey creek to erode. The project will be to clean the box culvert, the north channel, and to armor the south-east bank.</p> <p>Money for the design portion of this project was presented and recommended by the DAC on 4/29/24.</p> <p>The area is located in a floodplain and a blue line stream.</p> <p>Staff is requesting \$430,000.00 in construction funds for erosion control and channel stabilization.</p>	
BENEFIT	
<p>To clean out the channel under Washington St and keep Haikey creek flowing unimpeded leading to the proper floodplain and to mitigate erosion.</p>	
RECOMMENDATION	
<p>Approve the request for the expenditure of \$430,000 to construct erosion control and channel stabilization of the southern bank.</p>	
COMPLETED BY:	Sarah Walters
DATE:	01/14/25

Stormwater Utility Map



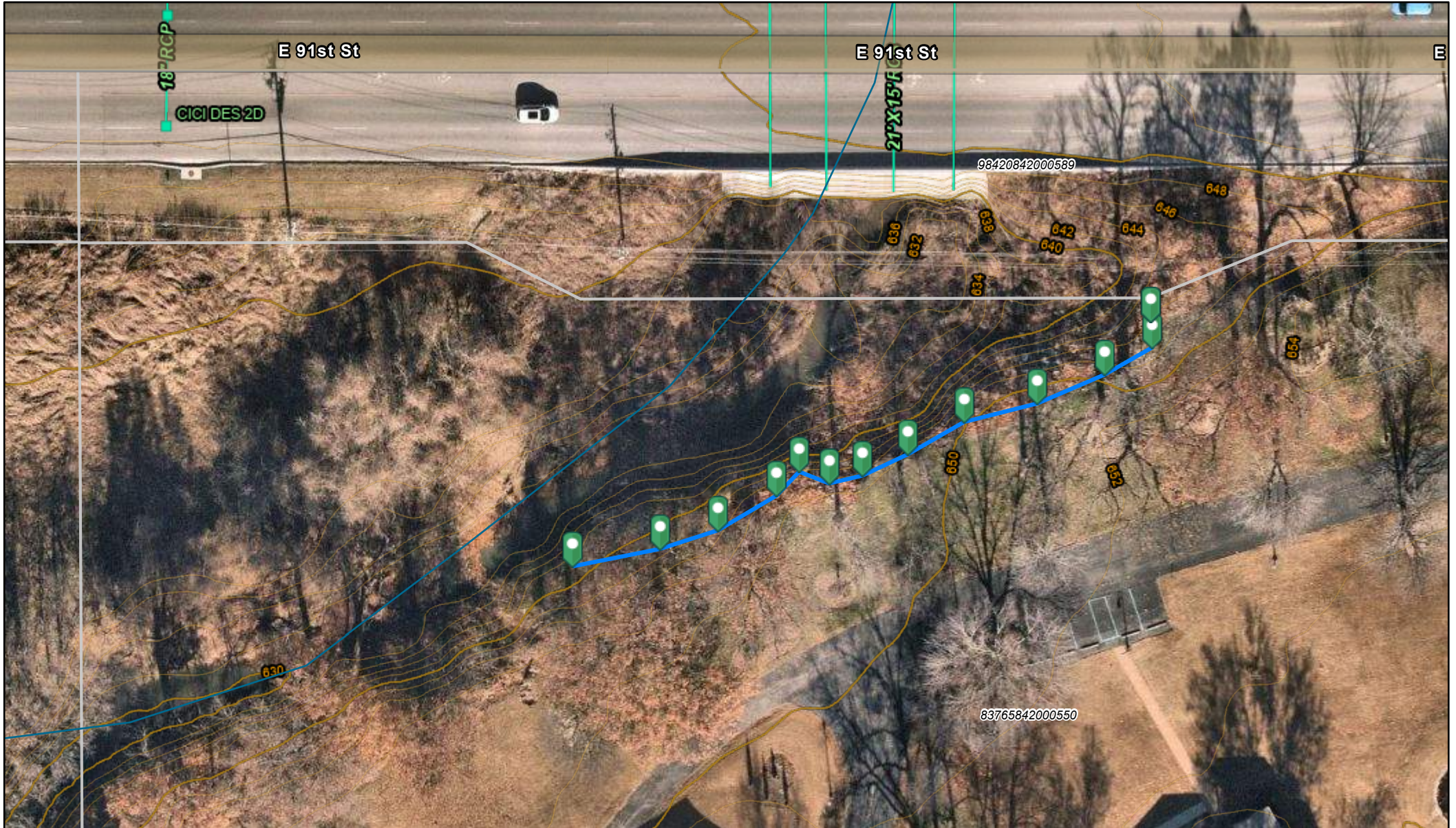
4/8/2024, 9:40:17 AM

- | | | | | | |
|--------------------------|--------------------------------|---|---------|-------|-------|
| Sections (PLSS) | YES Stormwater Lines | Private Stormwater Structures (Private) | Inlet | Other | Other |
| Blue Line Streams (ODOT) | Broken Arrow Stormwater Lines | Inlet | Inlet | Other | Other |
| Detention Ponds | State-Federal Stormwater Lines | Inlet | Manhole | Other | Inlet |
| NO | | Inlet | Other | Other | Inlet |


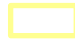







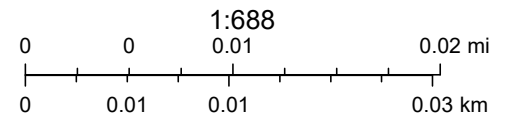
Copyright nearmap 2015. Source: Esri, Maxar, Earthstar Geographics, and the GIS User Community, Sources: Esri, TomTom, Garmin, FAO, NOAA, USGS, © OpenStreetMap contributors, and the GIS User Community

Stormwater Utility Map



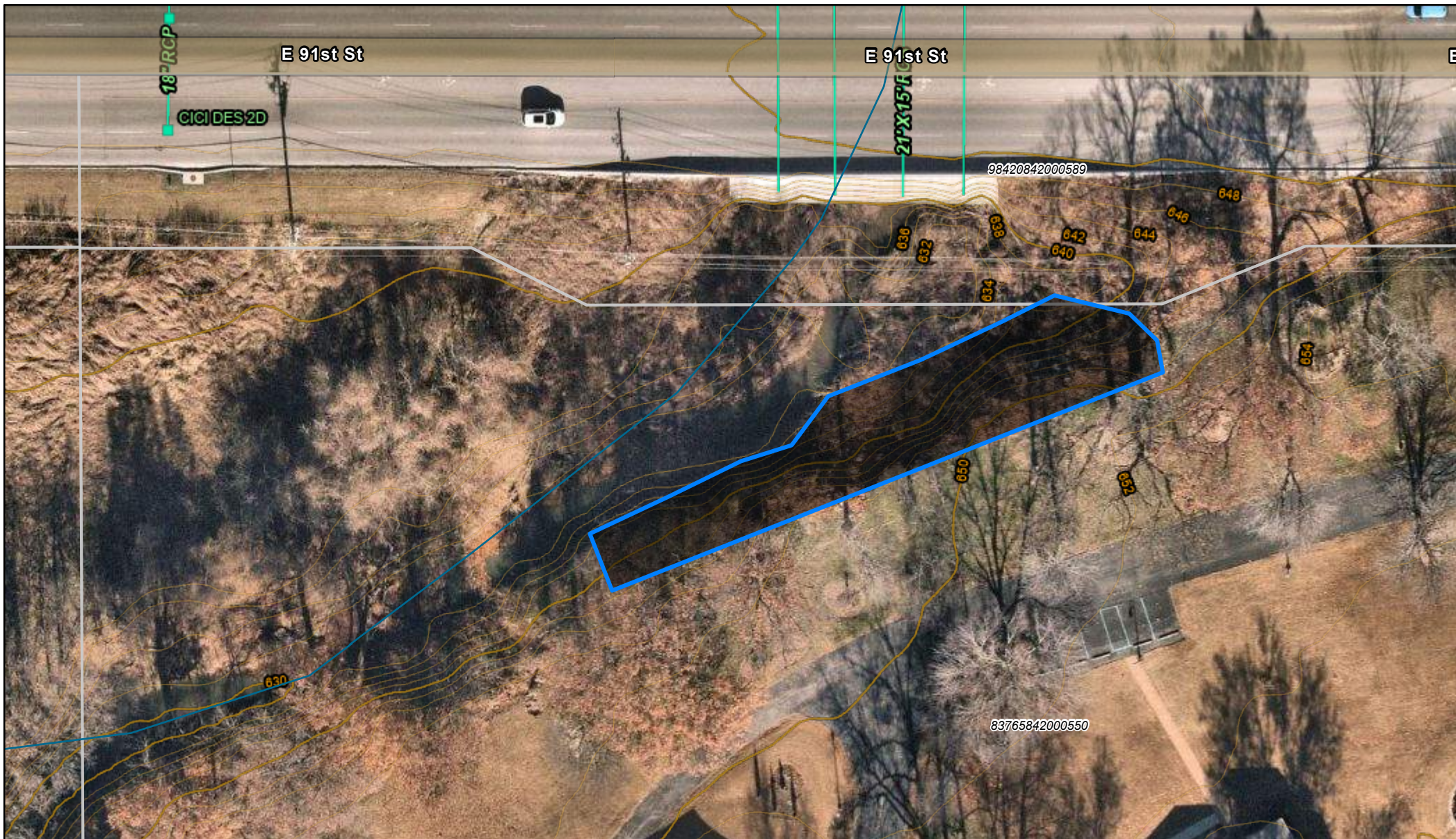
4/8/2024, 9:31:04 AM

- | | | |
|---|--|--|
|  Parcels | Stormwater Lines | Contours_2ft |
|  Sections (PLSS) |  Broken Arrow |  2ft |
|  Blue Line Streams (ODOT) | Stormwater Structures |  10ft |
| |  Inlet | |


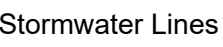
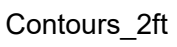

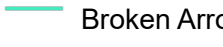
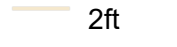

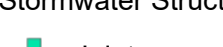
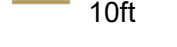



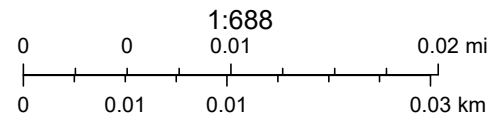
Copyright nearmap 2015, Source: Esri, Maxar, Earthstar Geographics, and the GIS User Community, Sources: Esri, TomTom, Garmin, FAO, NOAA, USGS, © OpenStreetMap contributors, and the GIS User Community

Stormwater Utility Map

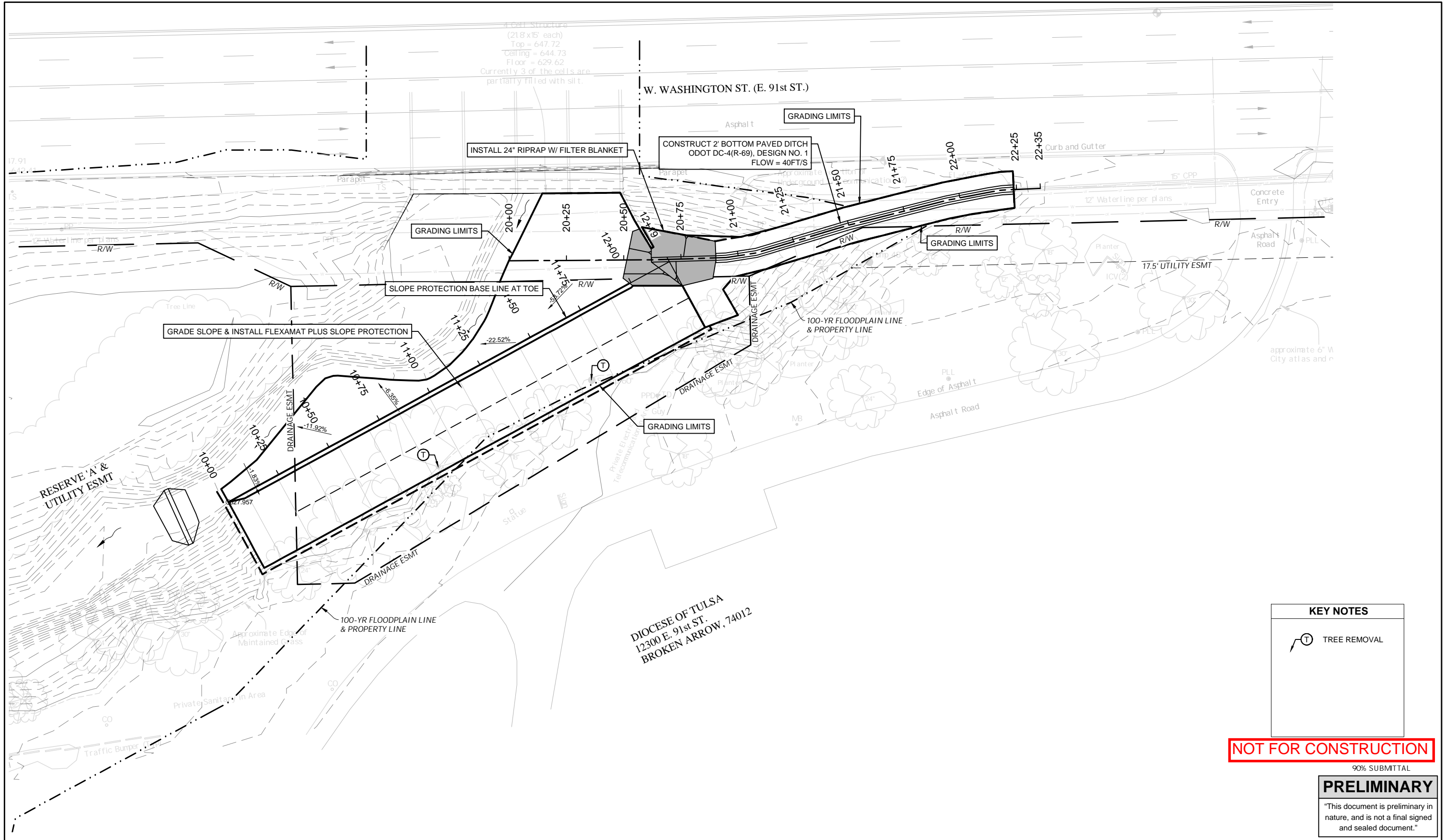


4/8/2024, 9:34:40 AM

- | | | |
|---|---|--|
|  Parcels |  Stormwater Lines |  Contours_2ft |
|  Sections (PLSS) |  Broken Arrow |  2ft |
|  Blue Line Streams (ODOT) |  Stormwater Structures |  10ft |
| |  Inlet | |



Copyright nearmap 2015, Source: Esri, Maxar, Earthstar Geographics, and the GIS User Community, Sources: Esri, TomTom, Garmin, FAO, NOAA, USGS, © OpenStreetMap contributors, and the GIS User Community



4 Cell Structure
 (218' x 15' each)
 Top = 647.72
 Ceiling = 644.73
 Floor = 629.62
 Currently 3 of the cells are
 partially filled with silt.

W. WASHINGTON ST. (E. 91st ST.)

KEY NOTES

TREE REMOVAL

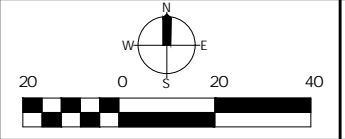
NOT FOR CONSTRUCTION

90% SUBMITTAL

PRELIMINARY

"This document is preliminary in nature, and is not a final signed and sealed document."

BROKEN ARROW
Where Opportunity lives



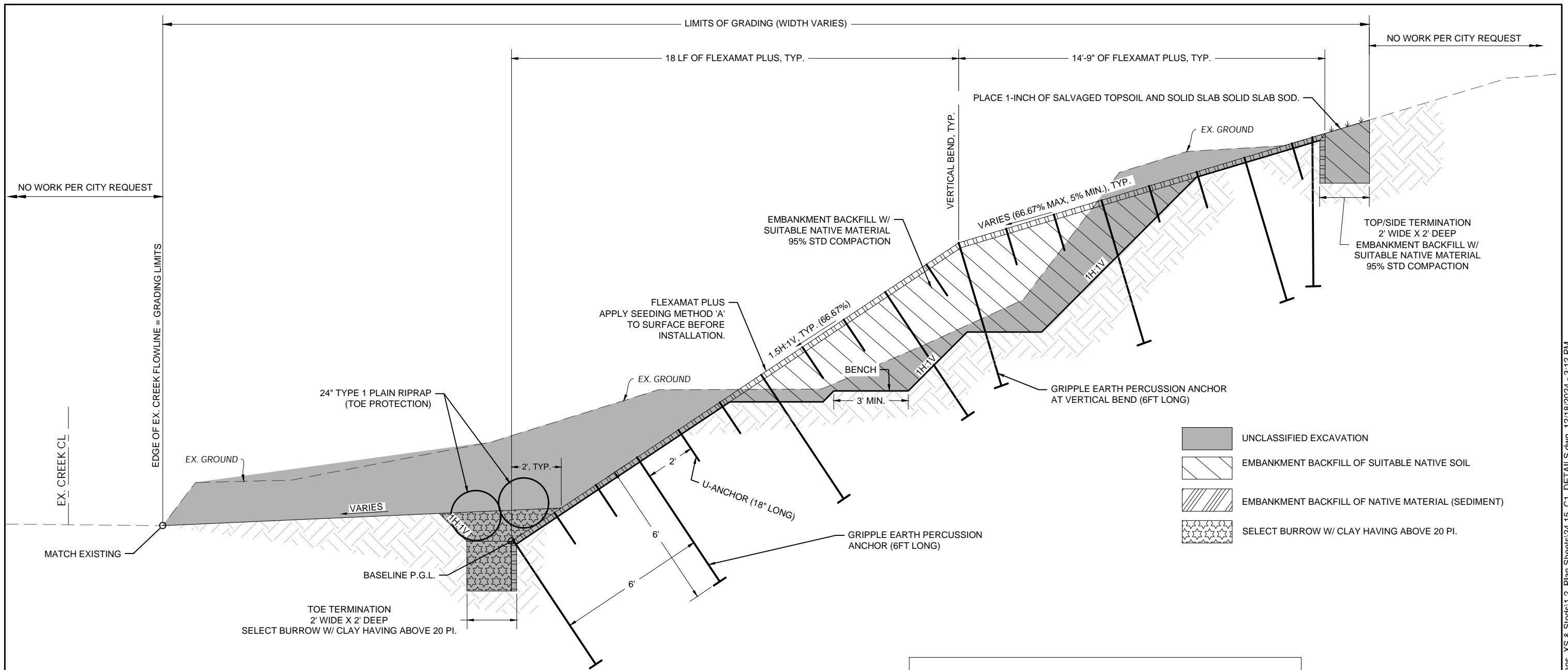
**DAC DIOCESE BANK STABILIZATION
 PROJECT: SW24080**

**PROJECT OVERVIEW
 & REMOVAL SHEET**

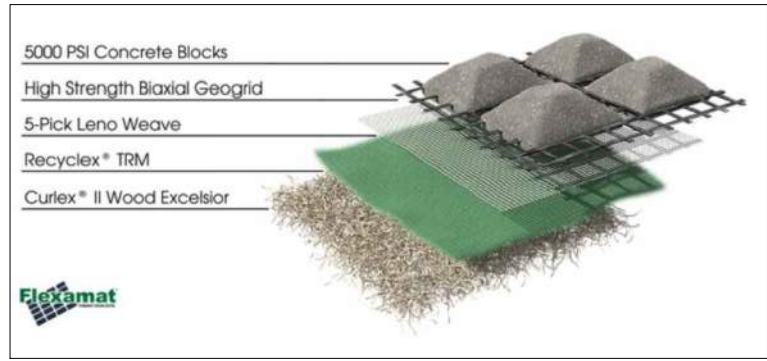
DATE	REVISIONS

DESIGN	DRAFTED	DATE
DAK	ZLM	12/18/2024
REVIEWED	PROJECT NO. SW23030	
APPROVED	SHEET	OF
	04	19

S:\1_P\Projects\20_Broken Arrow\24.15_CAC Diocese Bank Stabilization\03.0_Plan\Xs & Sinds\1.2_Plan Sheets\24.15_B1_Project Overview.dwg, 12/18/2024 - 3:12 PM



1 TYPICAL 1
UNIFORM GRADING TEMPLATE FOR FLEXAMAT PLUS
FULL SIZE SCALE (22x34): 1" = 2'
HALF SIZE SCALE (11x17): 1" = 4'



2 TYPICAL FLEXAMAT PLUS ROLL CONTENTS
FULL SIZE SCALE (22x34): NTS
HALF SIZE SCALE (11x17): NTS

NOT FOR CONSTRUCTION

90% SUBMITTAL

PRELIMINARY

"This document is preliminary in nature, and is not a final signed and sealed document."

DATE	REVISIONS

DESIGN	DRAFTED	DATE
DAK	ZLM	12/18/2024
REVIEWED	PROJECT NO. SW23030	
APPROVED	SHEET OF	05 / 19



