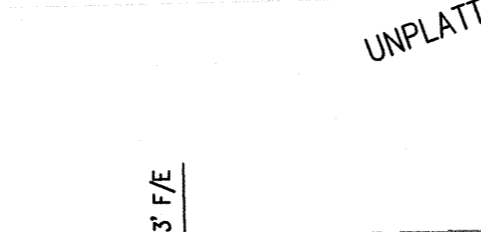




CERTIFICATE

I hereby certify that all real estate taxes involved in this plat have been paid as reflected by the current tax rolls. Security as required has been provided in the amount of \$194.00 per trust receipt no. 14610 to be applied to 2016 taxes. This certificate is NOT to be construed as payment of 2016 taxes. This is given in order that this plat may be recorded. 2016 taxes may exceed the amount of the trust deposit.

Dated: 09/26/16
Dennis Smiley
Tulsa County Treasurer
By: Deputy



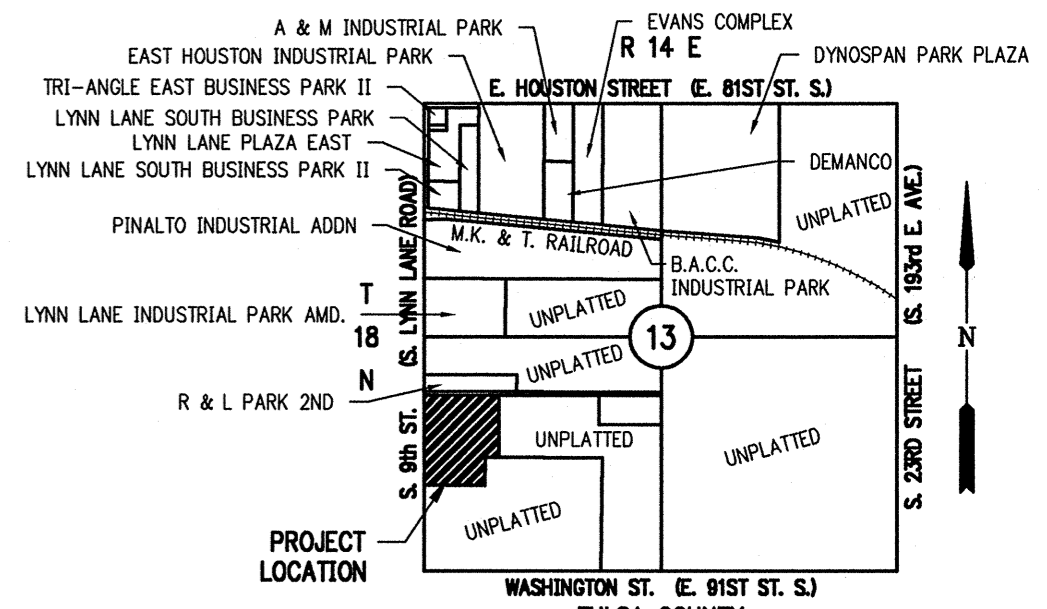
CROSSINGS AT LYNN LANE 1

AN ADDITION TO THE CITY OF BROKEN ARROW, TULSA COUNTY, OKLAHOMA
A PART OF THE SW/4, SECTION 13, T-18-N, R-14-E

BASIS OF BEARING
THE WEST LINE OF SW/4
N 01°17'35" W

BENCHMARK
BA 26
OKLAHOMA NORTH ZONE 3501
HORIZONTAL DATUM NAD 83 (1993)
NORTHING: 383229.887
EASTING: 2630291.884
VERTICAL DATUM NAVD 1988
ELEV. 670.307
DESCRIPTION OF BENCHMARK
5/8" REBAR - 1 1/2" ALUMINUM
CAP - FLUSH - STAMPED "BA26", SET
S.E. OF 91ST ST, AND 193RD E. AVE.

FLOODPLAIN REFERENCE
FIRM PANEL NO. 40143C0392KL DATED AUGUST 3, 2009
CLASSIFIES THE PROPERTY DESCRIBED HEREON AS ZONE "X",
AN AREA DETERMINED TO BE OUTSIDE THE 0.2% ANNUAL
CHANCE FLOODPLAIN.
THE ABOVE STATEMENT IS FOR INFORMATION ONLY AND THIS
SURVEYOR ASSUMES NO LIABILITY FOR THE CORRECTNESS OF
THE CITED MAP(S). IN ADDITION, THE ABOVE STATEMENT
DOES NOT REPRESENT THIS SURVEYOR'S OPINION OF THE
PROBABILITY OF FLOODING.



LOCATION MAP
SCALE IN FEET
0 2000

LEGEND

- SYMBOLS**
- SIP • SET 3/8" IRON PIN YELLOW CAP STAMPED "CTA CA 973"
 - FIP ○ FOUND IRON PIN
 - MAG NAIL
 - U/E UTILITY EASEMENT
 - F/E & L/E FENCE EASEMENT AND LANDSCAPE EASEMENT
 - T.A.E. TEMPORARY ACCESS EASEMENT
 - B/L BUILDING LINE SETBACK
 - L.A. LIMITS OF ACCESS
 - L.N.A. LIMITS OF NO ACCESS
 - R/W RIGHT OF WAY
 - (737.70) BUILDING PAD ELEVATION
 - (1113) STREET ADDRESS

LINWORK LEGEND

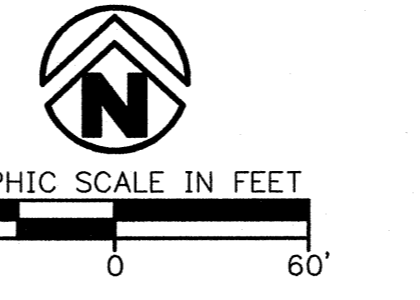
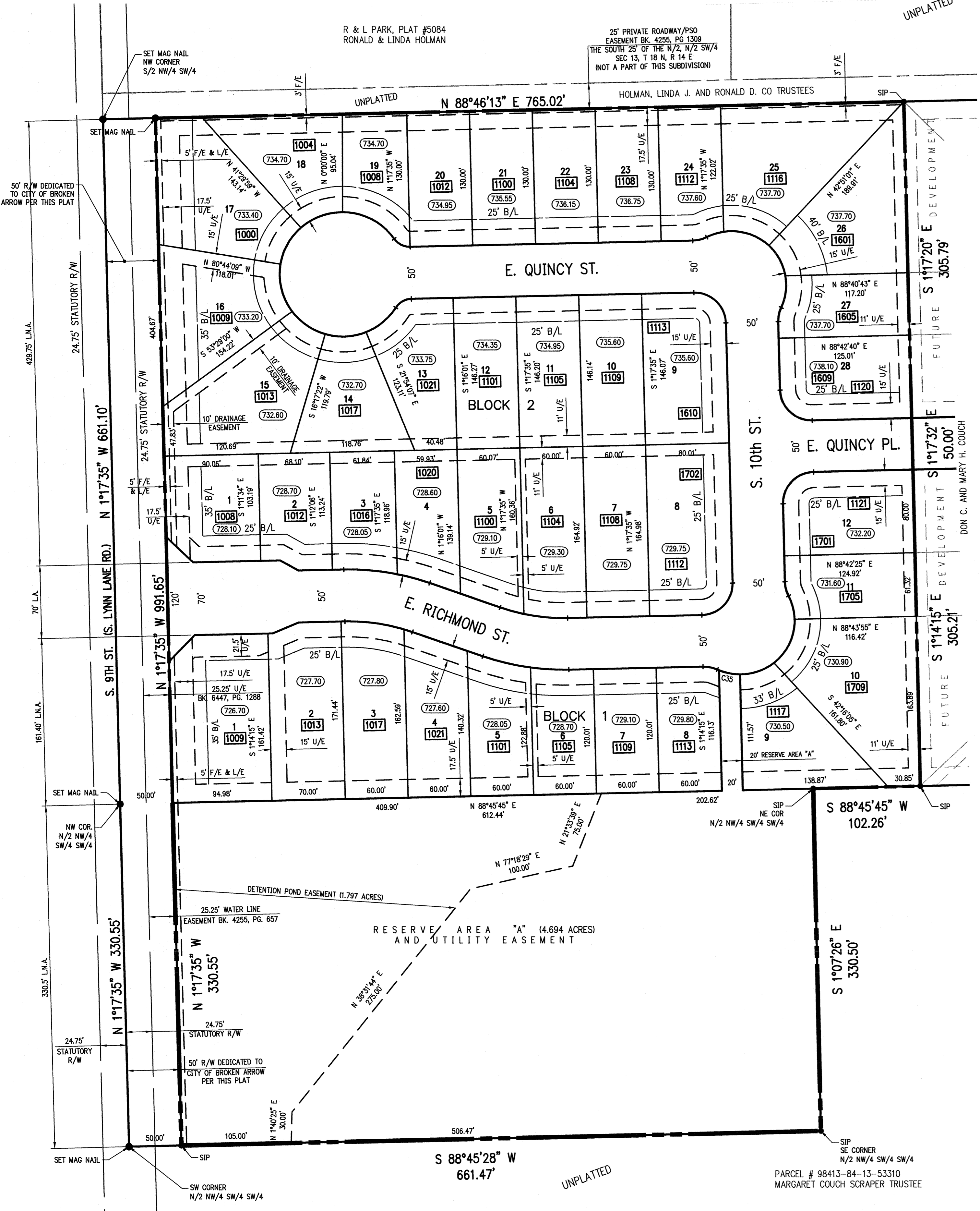
- RIGHT OF WAY LINE (R/W)
- EASEMENT
- SECTION LINE
- PERIMETER PROPERTY LINE
- LOT LINE
- BUILDING SET BACK

STATE OF OKLAHOMA }
COUNTY OF TULSA } SS
I, PAT KEY, Tulsa County Clerk, in and for the County and State above named, do hereby certify that the foregoing is a true and correct copy of a like instrument now on file in my office.
Dated the 26th day of Sept 2016
PAT KEY, Tulsa County Clerk
Dennis Smiley Deputy

APPROVED 9/26/16 by the
City Council of the City of Broken Arrow,
Oklahoma
Mayor *Dana Dean*
Attest: City Clerk *Dana Dean*



DETENTION DETERMINATION NUMBER: DD-42116-06



SITE INFORMATION:
ADDRESS 91st St S & LYNN LANE
ZONING RS-3
LOTS 40
BLOCKS 2
AREA 15.493 ACRES
RESERVE 4.694 ACRES
CITY OF BROKEN ARROW
7000
MINIMUM LOT SF (EA) 25 FT MIN.
FRONT BUILDING SETBACK 20 FT MIN.
BUILDING SETBACK ALONG S. 9th ST. 35 FT MIN.
SIDE SETBACKS 5 FT MIN.
FRONT LOT UTILITY ESMT 15 FT
REAR LOT UTILITY ESMT 11 FT
PROPERTY PERIMETER ESMT 17.5 FT

SLOPE ANALYSIS: ALL LOTS ARE IN COMPLIANCE (1:1) FOR EACH LOT

LINE TABLE			LINE TABLE		
LINE #	LENGTH	DIRECTION	LINE #	LENGTH	DIRECTION
L1	136.43'	N 1°17'35" W	L30	60.00'	S 88°46'13" W
L2	35.34'	N 43°44'19" E	L31	60.00'	S 88°46'13" W
L3	70.14'	N 88°46'13" E	L32	60.00'	S 88°46'13" W
L4	4.60'	N 88°46'13" E	L33	39.95'	S 88°46'13" W
L5	26.99'	N 66°59'00" E	L34	59.90'	N 88°46'13" E
L6	40.33'	N 88°45'45" E	L35	60.00'	N 88°46'13" E
L7	3.76'	N 88°45'45" E	L36	60.00'	N 88°46'13" E
L8	55.60'	S 70°42'34" E	L37	60.00'	N 88°46'13" E
L9	15.73'	S 70°42'34" E	L38	30.09'	N 88°46'13" E
L10	23.56'	N 88°45'45" E	L39	16.00'	S 1°17'37" E
L11	60.00'	N 88°45'45" E	L40	50.01'	S 1°17'37" E
L12	44.83'	N 88°45'45" E	L41	95.00'	N 88°42'25" E
L13	25.01'	N 1°17'37" W	L42	80.00'	N 1°17'20" W
L14	50.00'	N 1°17'37" W	L43	60.07'	N 1°17'20" W
L15	95.00'	N 88°42'25" E	L44	165.73'	N 1°17'20" W
L16	35.37'	S 46°15'41" E	L45	175.02'	S 88°46'13" W
L17	64.88'	N 88°46'13" E	L46	60.00'	S 88°46'13" W
L18	18.55'	N 88°46'13" E	L47	60.00'	S 88°46'13" W
L19	19.97'	S 61°13'47" E	L48	60.00'	S 88°46'13" W
L20	32.27'	N 88°45'45" E	L49	60.00'	S 88°46'13" W
L21	10.98'	N 88°45'45" E	L50	60.00'	S 88°46'13" W
L22	31.21'	S 70°42'34" E	L51	61.50'	S 88°46'13" W
L23	40.12'	S 70°42'34" E	L52	134.64'	S 88°46'13" W
L24	18.41'	N 88°45'45" E	L53	43.86'	S 88°46'13" W
L25	60.00'	N 88°45'45" E	L54	122.58'	S 1°17'35" E
L26	49.98'	N 88°45'45" E	L55	156.17'	S 1°17'35" E
L27	135.01'	N 1°17'37" W	L56	78.09'	S 1°17'35" E
L28	116.02'	N 1°17'37" W			
L29	50.04'	S 88°46'13" W			

ADDRESSES SHOWN ON THIS PLAT ARE ACCURATE AT THE TIME THE PLAT WAS FILED. ADDRESSES ARE SUBJECT TO CHANGE AND SHOULD NEVER BE RELIED ON IN PLACE OF THE LEGAL DESCRIPTION

