

Contract Work Order # 26

Revision: _____

Contractor Assigned to Work Order: Cherokee Pride Construction, Inc.

Contractor Contact: Harlan Yocham

Department Requesting Work Order: Streets and Storm Water

Requesting Party: John Myers

Funding Account Number: 030-5300-431-70.17

Funding Note: ST1415

Work Priority Status: Urgent Normal Low Other: _____

Scope of Work

The following scope of work consisting of work location, work description, established quantities, and timeline for completion has been reviewed and agreed upon by the contractor, the requesting department, and the Engineering and Construction Department.

Total Number of Days Agreed Upon for Construction: 30 Days or Completion Date: _____

Task and Location:

- 1) Install Handicap Ramp Type "B" with ADA Tactile Warning - Install (5) Ramps per the attached plan sheets at various locations.
- 1960 & 1961 W. Indianola St.; 1000 S. Poplar Ave; 1704 W. Jackson Pl.
- 2) Remove and Replace PC Concrete Sidewalk - Install per plan at various locations.

Plan Sheets or Additional Documents Attached: Yes No Other: Plan Sheets with Locations

Work Order Quantities

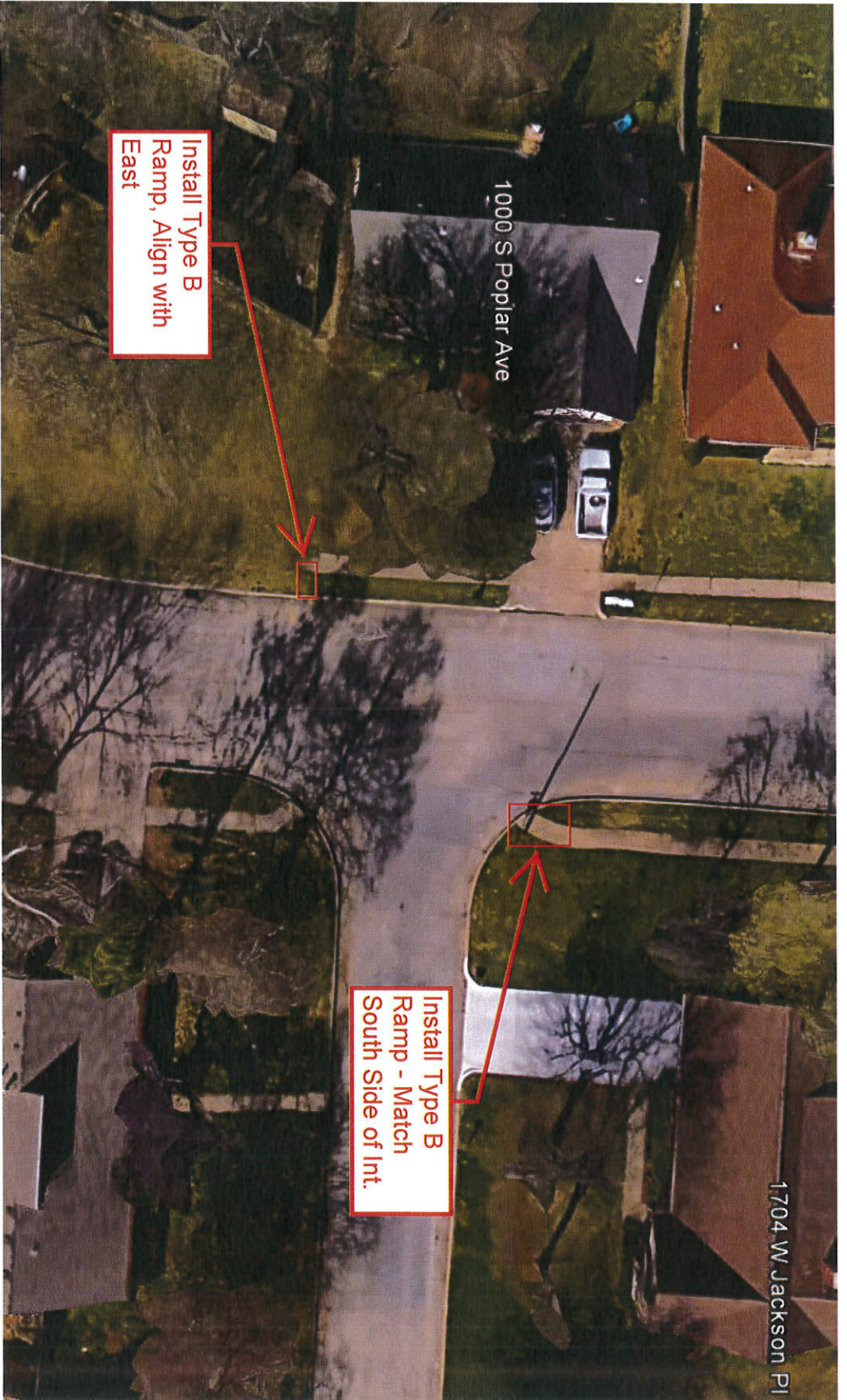
Item#	(Spec)	Item	Units	Price	Quantity	Total Amount
7	SP-14	Remove and Replace Handicap Ramp (Type "B") with ADA Tactile Warning System	EA	\$ 720.00	4	\$ 2,880.00
4	SP-11	Remove and Replace PC Concrete Sidewalk	SY	\$ 55.00	22	\$ 1,210.00
						\$ -
						\$ -
						\$ -
Total Cost: \$						4,090.00

This Work Order in the sum of: \$ 4,090.00 has been reviewed by all parties and is recommended for approval by:

Director of Division Submitting Work Order:	<u>John Myers</u> Name	<u>John Myers</u> Signature	<u>3/7/17</u> Date
Contractor Performing Work Order:	<u>Harlan Yocham</u> Name	<u>Harlan Yocham</u> Signature	<u>3/2/17</u> Date
Construction Division Manager:	<u>Timothy S Robins, PE</u> Name	<u>Timothy S Robins</u> Signature	<u>3/2/17</u> Date
Director of Engineering & Construction:	<u>Alex Mills, PE.</u> Name	<u>Alex Mills</u> Signature	<u>3/2/17</u> Date
Assistant City Manager - Operations:	<u>Kenneth D Schwab, PE</u> Name	<u>Kenneth D. Schwab</u> Signature	<u>3-6-17</u> Date



Work Order #26 - Work Locations

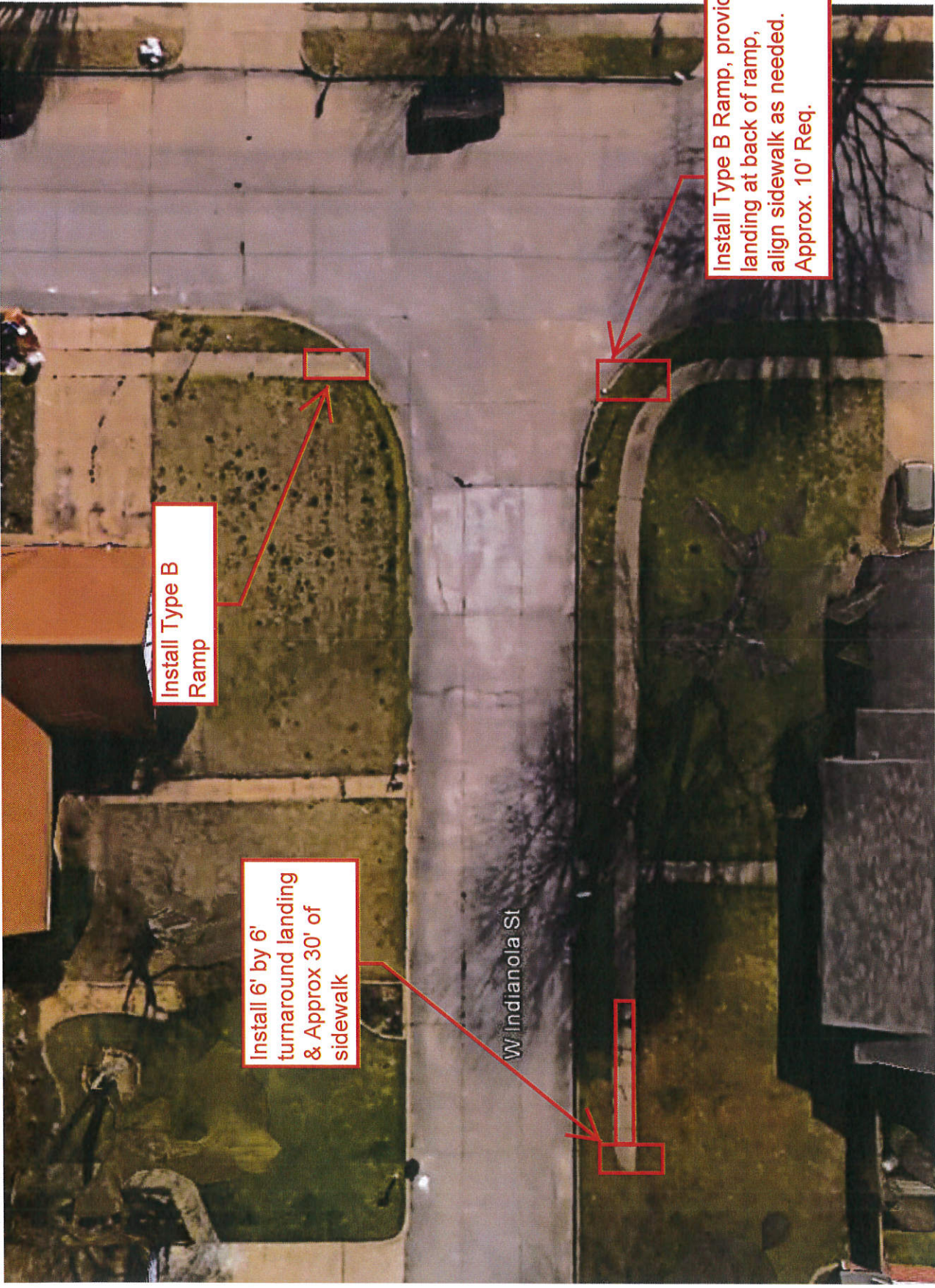


Install Type B
Ramp, Align with
East

Install Type B
Ramp - Match
South Side of Int.

1000 S Poplar Ave

1704 W Jackson Pl



Install Type B Ramp

Install 6' by 6' turnaround landing & Approx 30' of sidewalk

Install Type B Ramp, provide landing at back of ramp, align sidewalk as needed. Approx. 10' Req.

W Indianola St

Request for PC Contract Work Order

Contractor Requested for Work: Cherokee Pride Request Date: 2-8-17
 Department Requesting Work: Storm Water Requesting Party: Jon Tedford
 Funding Account Number: 030-5300-431-70-17 Funding Note: ST1415

Work Priority Status: Urgent Normal Low Other: _____
 0-7 days 7-30 days 30+ days

Scope of Work Being Requested

Below please describe with as much detail as possible the location(s) of the work, the activity requested, quantities if known, and a brief description of reasoning for the work. Also list any pertinent information required to perform such activities. A plan sheet is attached for additional sketches or details. For additional tasks, utilize as many of these sheets as needed. Deliver signed copy to Construction Division attn: Sandy Brannon for execution.

Task #1

Task Location: Install ADA Ramps in Wedge Wood

Task Description: II, III + IV. Additions.

Task Comments: _____

Task #2

Task Location: Install ADA Ramps in Central Park Estates First, Second + Third Additions.

Task Description: A. List of Address's and locations

Task Comments: is provided.

Task #3

Task Location: Note: Some locations Asphalt has been overlaid over existing

Task Description: gutter line. When pouring new gutter, place back to original flow line and street dept. will fill

Task Comments: in Asphalt to match.

Task #4

Task Location: _____

Task Description: Some locations will have water valves that need to be adjusted.

Task Comments: _____

By signing below, your department is giving the authorization to the Engineering and Construction Department to establish a work order following the above described scope of work, utilize the funding source noted above, and administer the scope of work.

Submitted by:			
Requesting Departments Representative:	<u>John Myers</u> Name	<u>John Myers</u> Signature	<u>2/8/17</u> Date
Received by:			
Construction Division Manager:	<u>Timothy S Robins, PE.</u> Name	<u>[Signature]</u> Signature	<u>3/21</u> Date
Contract Administrator Assigned:	<u>Joe V.</u> Name		

Wedge Wood

Total
4

1900	W. Indianola St	S. E. Corner
1901	W. Indianola St.	N. E. Corner
1000	S. Poplar Ave	S. E. corner
1704	W. Jackson Pt.	S. W. corner

Central Park Estates
 move subsequent work orders

Total
50

/ Value

809	S. Lions Ave	N. W. corner
1252	W. Jackson St.	S. W. corner
1001	W. Jackson St.	N. E. corner
1100	W. Knoxville St.	S. E. corner
1101	W. Knoxville St.	N. E. corner
1212	W. Knoxville St.	S. W. corner
901	S. Lions Ave	N. W. corner
912	S. Lions Ave	S. W. corner
1001	S. Lions Ave	N. E. corner
1000	S. Juniper St.	N. E. corner
1001	S. Juniper St.	N. W. corner
1100	W. Louisville St.	S. E. corner
917	S. Ironwood Ave	S. W. corner
1000	S. Ironwood Ave.	N. E. corner
1001	S. Ironwood Ave	N. W. corner
1009	S. Ironwood Ave.	S. W. corner
1016	S. Ironwood Ave.	S. E. corner

Central Park cont.

	1237	W. Memphis St.	N. W. corner
	1105	S. Lions Ave.	S. W. corner
	1100	S. maple pl.	S. E. corner
	1101	S. maple pl.	N. E. corner
	1228	S. maple pl.	N. E. corner
	1229	S. maple pl.	N. W. corner
	1301	W. Pittsburg St.	N. E. corner
	1304	S. Lions Ave.	S. E. corner
2 Values	1301	S. Lions Ave.	N. W. corner
	1212	W. Oak Ridge St.	S. W. corner
	1200	S. Lions Ave	N. E. corner
	1100	S. Lions Ct.	S. E. corner
	1238	W. Nashville St.	S. W. corner
1212	1221	W. Nashville St.	N. W. corner
	900	W. Nashville St.	S. E. corner
	701	W. Nashville St.	N. E. corner
	1101	S. Fern Ave.	N. W. corner
	903	W. Memphis St.	N. E. corner
+6' Sidewalk	800	W. Memphis St.	S. E. corner
+10' Sidewalk	708	W. Memphis St.	S. W. corner
	1100	S. Fern Ave.	N. E. corner
	1101	S. Fern Ave.	N. W. corner
	1309	S. Fern Ave.	S. W. corner
	800	W. Pittsburg St.	S. E. corner
	804	W. Pittsburg St.	S. W. corner

Central Park cont.

900	W. Pittsburg st.	S.E. corner
1300	S. Gum Ave.	N.E. corner
900	W. oakridge st.	S.E. corner
1121	W. oak ridge st.	N.W. corner
1300	S. Juniper Ave.	N.E. corner
1116	W. Pittsburg st.	S.W. corner
1003	W. Pittsburg st.	N.E. corner
921	W. Pittsburg st.	N.W. corner