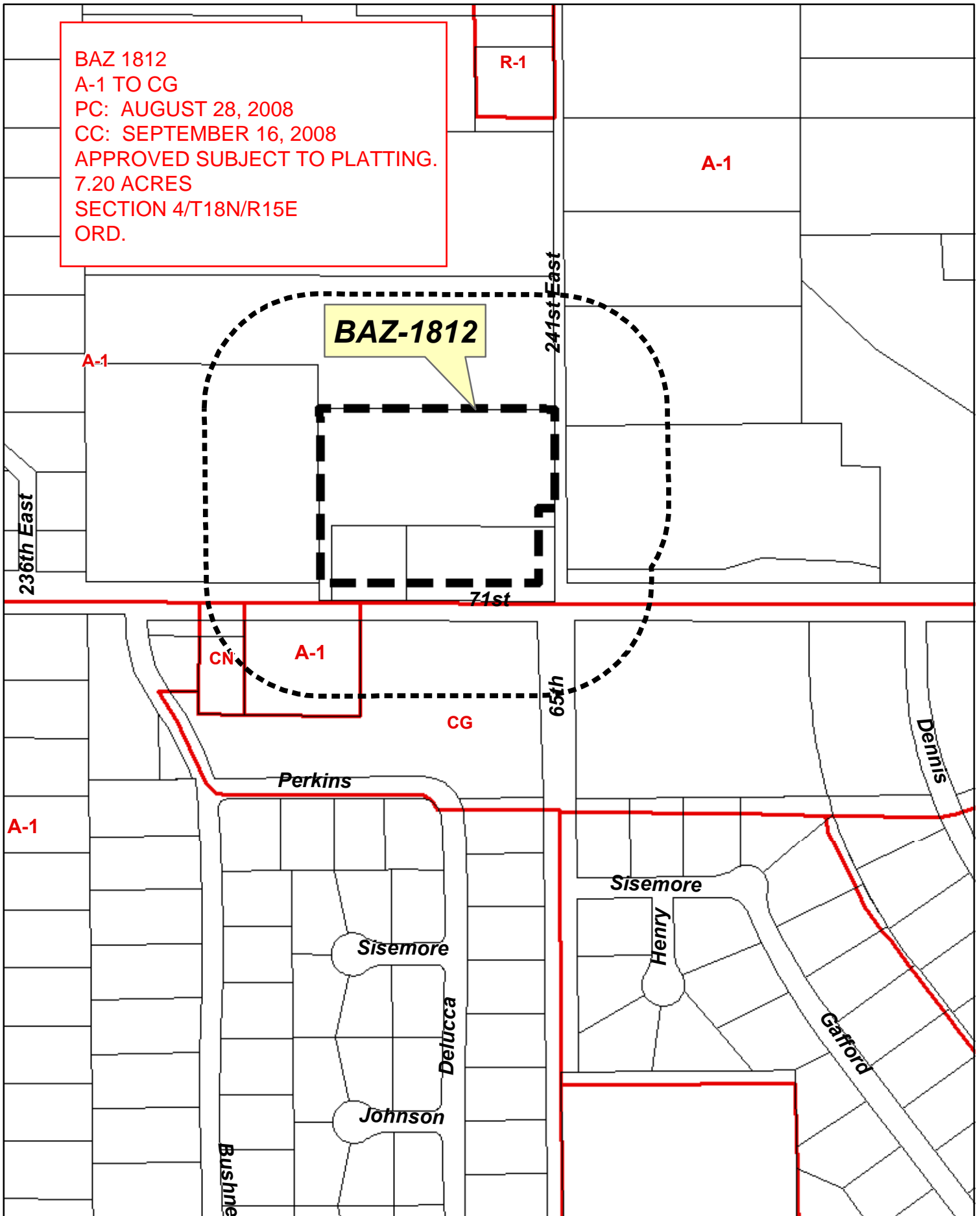


BAZ 1812  
A-1 TO CG  
PC: AUGUST 28, 2008  
CC: SEPTEMBER 16, 2008  
APPROVED SUBJECT TO PLATTING.  
7.20 ACRES  
SECTION 4/T18N/R15E  
ORD.

**BAZ-1812**



300' Radius



Subject Tract

**BAZ-1812**



4-18-15