

Exhibit "A.1"

Buff Creek Blocks 1-7, Broken Arrow, Oklahoma

Utility Easement For Offsite Sanitary Sewer 1 Description

A TRACT OF LAND THAT IS A PART OF THE NORTHEAST QUARTER (NE/4) OF SECTION SEVEN (7), TOWNSHIP EIGHTEEN (18) NORTH, RANGE FIFTEEN (15) EAST OF THE INDIAN MERIDIAN, WAGONER COUNTY, STATE OF OKLAHOMA, ACCORDING TO THE U.S. GOVERNMENT SURVEY THEREOF, BEING MORE PARTICULARLY DESCRIBED AS FOLLOWS:

COMMENCING AT THE NORTHEAST CORNER OF THE NORTHEAST QUARTER (NE/4) OF SAID SECTION 7; THENCE SOUTH 88°43'47" WEST AND ALONG THE NORTH LINE OF SAID NE/4, FOR A DISTANCE OF 69.74 FEET; THENCE SOUTH 1°16'13" EAST AND PERPENDICULAR TO SAID NORTH LINE, FOR A DISTANCE OF 110.00 FEET TO A POINT, SAID POINT BEING THE INTERSECTION OF THE PRESENT SOUTH RIGHT-OF-WAY LINE OF EAST KENOSHA STREET AND THE PRESENT WEST RIGHT-OF-WAY LINE OF SOUTH 209TH EAST AVENUE AND BEING THE POINT OF BEGINNING;

THENCE SOUTH 1°24'12" EAST AND ALONG SAID WEST RIGHT-OF-WAY LINE, FOR A DISTANCE OF 15.00 FEET; THENCE SOUTH 88°43'47" WEST AND PARALLEL WITH THE NORTH LINE, FOR A DISTANCE OF 744.50 FEET; THENCE NORTH 1°24'12" WEST AND PARALLEL WITH THE WEST LINE, FOR A DISTANCE OF 25.25 FEET; THENCE SOUTH 88°43'47" WEST AND PARALLEL WITH THE NORTH LINE, FOR A DISTANCE OF 550.47 FEET; THENCE SOUTH 1°16'13" EAST AND PERPENDICULAR TO THE NORTH LINE, FOR A DISTANCE OF 248.14 FEET; THENCE SOUTH 46°55'31" WEST FOR A DISTANCE OF 233.68 FEET; THENCE SOUTH 76°55'42" WEST FOR A DISTANCE OF 135.14 FEET; THENCE SOUTH 35°03'37" WEST FOR A DISTANCE OF 218.67 FEET; THENCE SOUTH 1°16'13" EAST AND PERPENDICULAR TO THE NORTH LINE, FOR A DISTANCE OF 37.54 FEET; THENCE SOUTH 88°43'47" WEST AND PARALLEL WITH THE NORTH LINE, FOR A DISTANCE OF 15.00 FEET; THENCE NORTH 1°16'13" WEST AND PERPENDICULAR TO THE NORTH LINE, FOR A DISTANCE OF 42.46 FEET; THENCE NORTH 35°03'37" EAST FOR A DISTANCE OF 229.33 FEET; THENCE NORTH 76°55'42" EAST FOR A DISTANCE OF 136.86 FEET; THENCE NORTH 46°55'31" EAST FOR A DISTANCE OF 222.95 FEET; THENCE NORTH 1°16'13" WEST AND PERPENDICULAR TO THE NORTH LINE, FOR A DISTANCE OF 256.43 FEET TO A POINT, SAID POINT BEING 84.75 FEET PERPENDICULARLY DISTANT FROM THE NORTH LINE; THENCE NORTH 88°43'47" EAST AND PARALLEL WITH THE NORTH LINE, FOR A DISTANCE OF 580.44 FEET; THENCE SOUTH 1°24'12" EAST AND PARALLEL WITH THE WEST LINE, FOR A DISTANCE OF 25.25 FEET; THENCE NORTH 88°43'47" EAST AND PARALLEL WITH THE NORTH LINE, FOR A DISTANCE OF 729.50 FEET TO THE POINT OF BEGINNING;

SAID TRACT CONTAINING 33,125 SQUARE FEET OR 0.760 ACRES.

Basis of Bearing

THE BEARINGS SHOWN HEREON ARE BASED UPON THE OKLAHOMA STATE PLANE COORDINATE SYSTEM, NORTH ZONE (3501), NORTH AMERICAN DATUM 1983 (NAD83); SAID BEARINGS ARE BASED LOCALLY UPON FIELD-OBSERVED TIES TO THE FOLLOWING MONUMENTS:

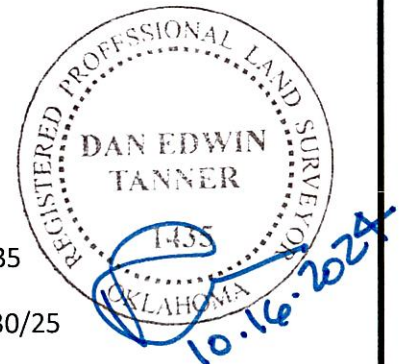
- (1) FOUND 1" IRON PIN AT THE NORTHWEST CORNER OF THE NORTHEAST QUARTER (NE/4) OF SECTION 7;
- (2) FOUND MAG NAIL AT THE NORTHEAST CORNER OF THE NORTHEAST QUARTER (NE/4) OF SECTION 7;

THE BEARING BETWEEN SAID MONUMENTS BEING NORTH 88°43'47" EAST.

Certification

I, DAN E. TANNER, OF TANNER CONSULTING, LLC, CERTIFY THAT THE ATTACHED DESCRIPTION CLOSES IN ACCORD WITH EXISTING RECORDS, IS A TRUE REPRESENTATION OF THE EASEMENT AS DESCRIBED, AND MEETS THE MINIMUM TECHNICAL STANDARDS FOR LAND SURVEYING OF THE STATE OF OKLAHOMA.

DAN E. TANNER, P.L.S.
OKLAHOMA P.L.S. #1435
OKLAHOMA CA #2661
EXPIRATION DATE: 6/30/25

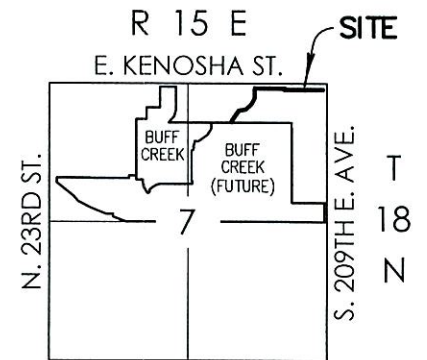
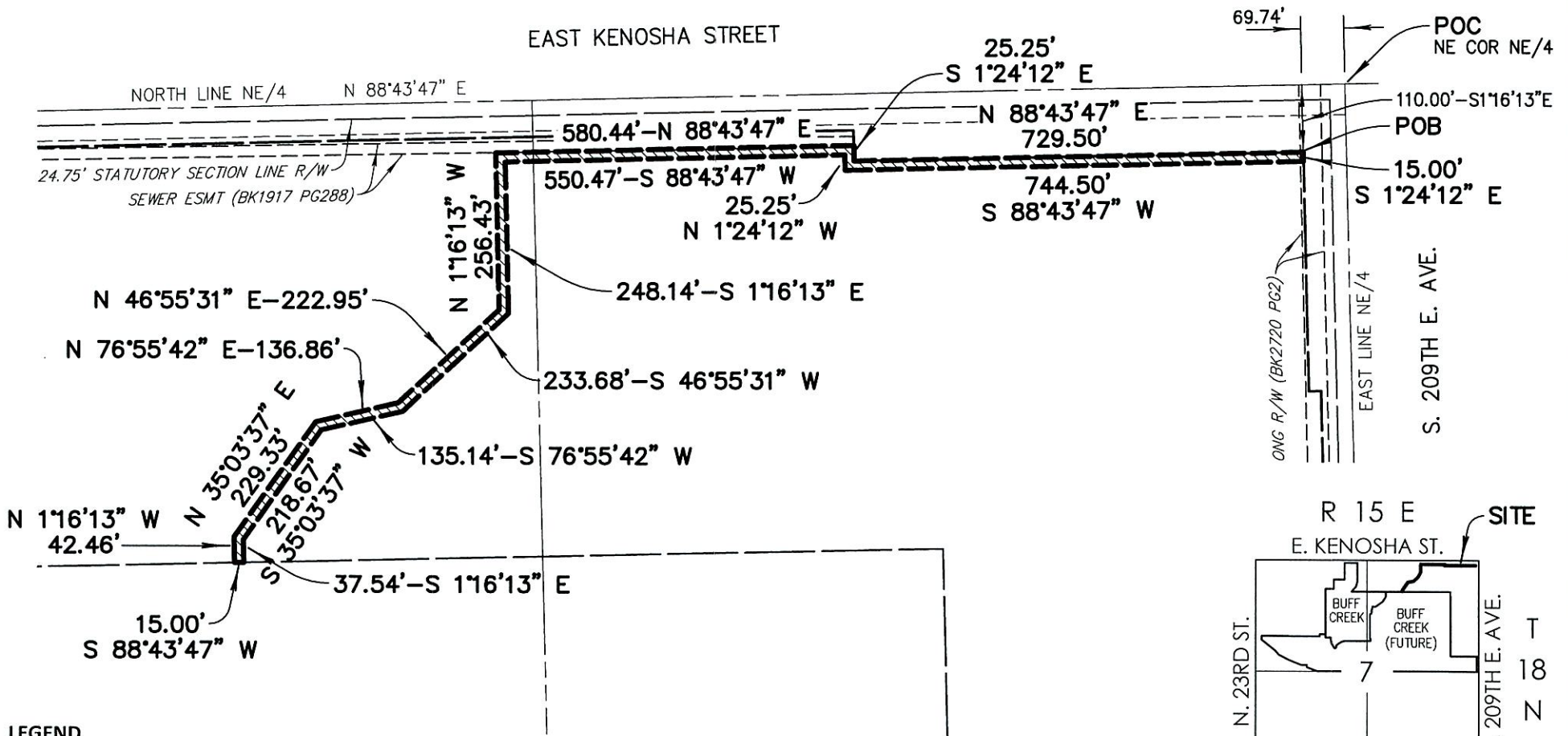




NORTH
NOT TO SCALE

Exhibit "A.2"

Buff Creek Blocks 1-7, Broken Arrow, Oklahoma Utility Easement For Offsite Sanitary Sewer 1 Exhibit



Location Map

LEGEND

- BK PG BOOK & PAGE
- COR CORNER
- ESMT EASEMENT
- POB POINT OF BEGINNING
- POC POINT OF COMMENCEMENT
- R/W RIGHT-OF-WAY