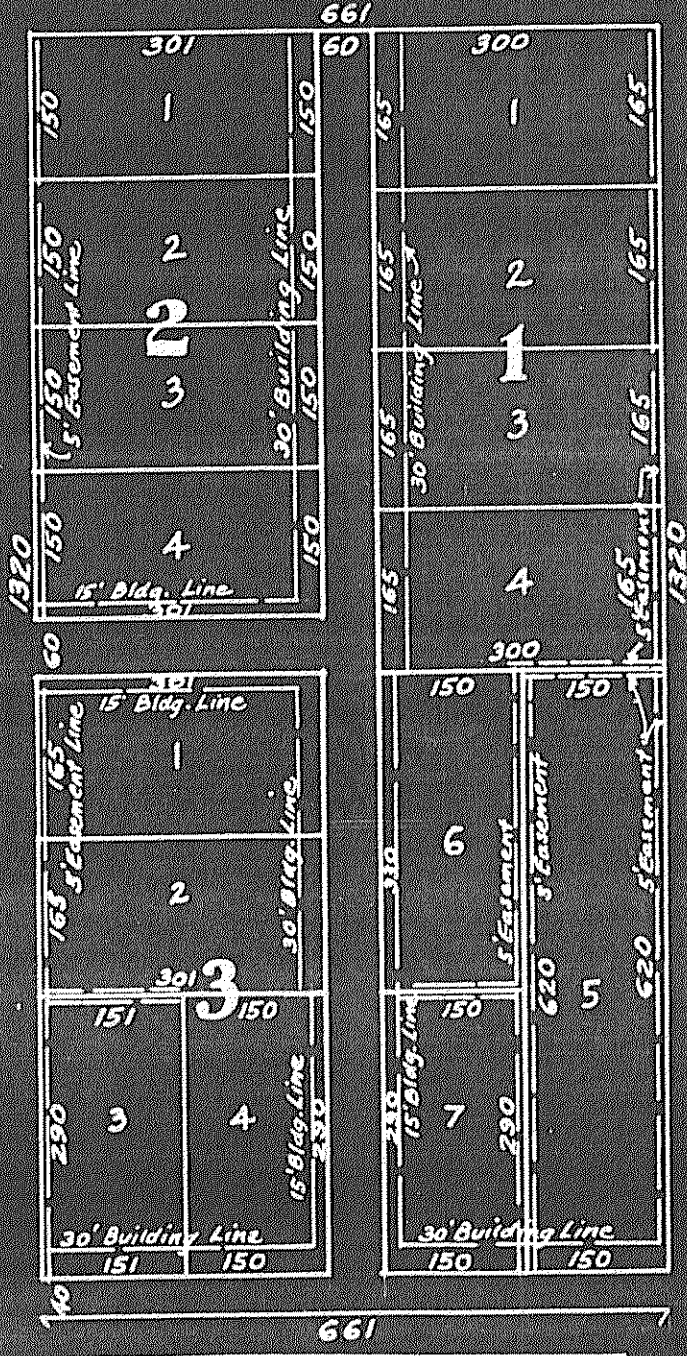
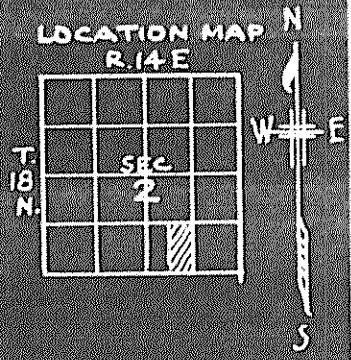


KENWOOD ACRES

AN ADDITION IN TULSA COUNTY
OKLAHOMA

E 1/2 OF SW 1/4 OF SE 1/4 IN SEC. 2, T. 18 N., R. 14 E.

SCALE 1" = 200'



PHONE
62557

PLAT BOOK, CITY OF TULSA & VICINITY
COMPILED BY A. C. THORNE, ARCHITECT

PLAT NO. 1417, FILED 7/12/48
RECORD NO. 84652B