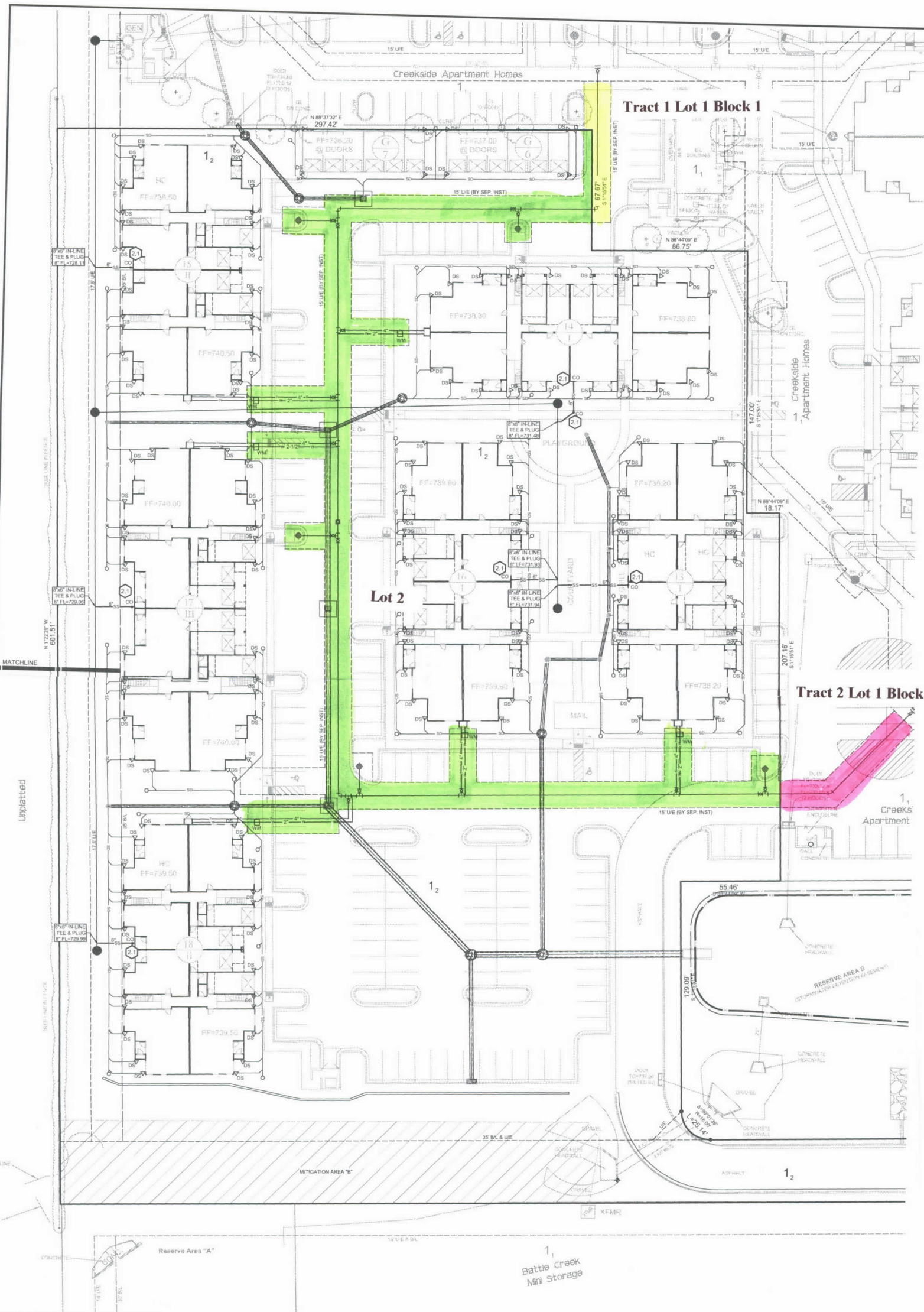




- Legend**
- EXISTING SANITARY
 - EXISTING WATER LINE
 - PROPOSED SANITARY SEWER SERVICE LINE
 - PROPOSED WATER SERVICE LINE (SEE NOTE #2)
 - PROPOSED FIRE LINE
 - CLEAN OUT
 - WATER METER
 - DOWNSPOUT CONNECTIONS

- Notes**
1. SEE SHEETS C18 & C17 FOR DOWNSPOUT LOCATION & PIPE SIZE.
 2. FOR EACH 2" AND 3-1/2" SERVICE LINE, RUN THE LINE UNDER A GREEN AREA AND INSTALL 2" AND 3-1/2" BALL VALVES, WRAP LOCATOR TAPE AROUND THE VALVE, AND BRING THE TAPE TO THE SURFACE AND MAKE A VALVE LOCATION MARKER ON THE ADJACENT CURB.



STORMWATER DETENTION ACCOMMODATIONS FOR THIS SITE ARE PROVIDED IN ACCORDANCE WITH DETENTION DETERMINATION NUMBER: DD-032514-12.

NO.	DATE	DESCRIPTION



ALL CONSTRUCTION TO BE IN STRICT ACCORDANCE WITH CURRENT CITY OF BROKEN ARROW PUBLIC WORKS DEPARTMENT SPECIFICATIONS, INCLUDING O.D.D.T. 2008 EDITION SPECIFICATIONS.

SWA **Stamore Welz & Associates, Inc.**
 88 EAST 30th PLACE
 TULSA, OKLAHOMA 74106
 C.A. NO. 10000
 PHONE: (918) 485-1800
 FAX: (918) 485-8888
 WWW: SWA.COM

Creekside Apt. Homes-Ph II
 Utility Plan (S/2)
 (LOTS 1 & 2, BLOCK 1)
 DETENTION DETERMINATION NUMBER: DD-032514-12

SCALE	DESIGN	DATE	DRAFTED	DATE
PLAN: 1"=20'	QTW	5/26/17	LAD	5/26/17
HORZ: N/A	REVIEWED	DATE	APPROVED	DATE
VERT: N/A				
DRAWING NAME	SHEET	C14	WORK ORDER NO.	
7141-30UT-PLWG	OF	19	17141.30	