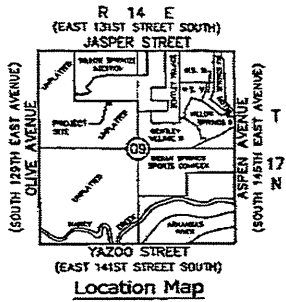


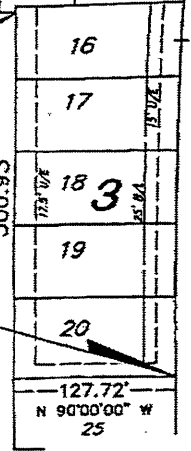
Unplatted



Point of Commencing

NORTHEAST CORNER OF LOT 25 IN BLOCK 5 OF BENTLEY VILLAGE II, PLAT NUMBER 5875.

Unplatted



PROPOSED EASEMENT

Legal Description

COMMENCING AT THE NORTHEAST CORNER (NE) OF LOT 25, BLOCK 5, BENTLEY VILLAGE II, AN ADDITION TO THE CITY OF BROKEN ARROW, TULSA COUNTY, OKLAHOMA, RECORDED AS PLAT # 5875; THENCE N 90° 00' 00" W A DISTANCE OF 127.72 FEET TO THE NORTHWEST CORNER (NW) OF SAID LOT 25, BLOCK 5 OF SAID BENTLEY VILLAGE II; THENCE N 00° 25' 44" W A DISTANCE OF 300.93 FEET; THENCE S 89° 54' 53" W A DISTANCE OF 805.98 FEET TO THE "POINT OF BEGINNING"; THENCE CONTINUING S 89° 54' 53" W A DISTANCE OF 80.00 FEET; THENCE S 00° 05' 07" E A DISTANCE OF 80.00 FEET; THENCE N 89° 54' 53" E A DISTANCE OF 80.00 FEET; THENCE N 00° 05' 07" W A DISTANCE OF 80.00 FEET TO THE "POINT OF BEGINNING".

CONTAINING 6,400.00 SQUARE FEET / 0.15 ACRES.

Notes

1. THE BEARINGS SHOWN HEREON ARE BASED ON A BEARING USING PLATTED BEARINGS OF "BENTLEY VILLAGE II" PLAT NO. 5875, CITY OF BROKEN ARROW, TULSA COUNTY, OKLAHOMA. SECTION 9, T-17-N, R-14-E.

Bentley Village II

EXHIBIT A
Scale: 1"=100'

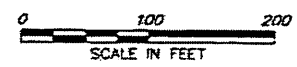


EXHIBIT OF EASEMENT
(TEMPORARY TURNAROUND EASEMENT)

HRA HALL, ROSENBAUM, ALMON & ASSOCIATES, INC.
1815 WEST TACOMA - SUITE C MOBILE (918) 258-3737
BROKEN ARROW, OKLAHOMA 74002 FAX: (918) 258-2394
CIVIL ENGINEER EXP. DATE: 6-30-2027