

CITY OF BROKEN ARROW BRIDGE: 67
NBI NO.: 16464
STRUCTURE NO.: 72E0690N4020002

COUNTY: TULSA
FACILITY CARRIED: NEW ORLEANS ST.
FACILITY INTERSECTED: HAIKEY CREEK



PHOTO 1: NORTH PROFILE (LOOKING SOUTH)



PHOTO 2: SOUTH PROFILE (LOOKING NORTH)

CITY OF BROKEN ARROW BRIDGE: 67
NBI NO.: 16464
STRUCTURE NO.: 72E0690N4020002

COUNTY: TULSA
FACILITY CARRIED: NEW ORLEANS ST.
FACILITY INTERSECTED: HAIKEY CREEK



PHOTO 3: CHANNEL, UPSTREAM (LOOKING NORTH)



PHOTO 4: CHANNEL, DOWNSTREAM (LOOKING SOUTH)

CITY OF BROKEN ARROW BRIDGE: 67
NBI NO.: 16464
STRUCTURE NO.: 72E0690N4020002

COUNTY: TULSA
FACILITY CARRIED: NEW ORLEANS ST.
FACILITY INTERSECTED: HAIKEY CREEK



PHOTO 5: WEST ABUTMENT SCOUR - 22 FT. (LENGTH) X 6 FT. MAX (HEIGHT) X 6.5 FT. MAX (DEEP) EXPOSING 6 STEEL PILES



PHOTO 6: WEST ABUTMENT SCOUR - 22 FT. (LENGTH) X 6 FT. MAX (HEIGHT) X 6.5 FT. MAX (DEEP) EXPOSING 6 STEEL PILES

CITY OF BROKEN ARROW BRIDGE: 67
NBI NO.: 16464
STRUCTURE NO.: 72E0690N4020002

COUNTY: TULSA
FACILITY CARRIED: NEW ORLEANS ST.
FACILITY INTERSECTED: HAIKEY CREEK



PHOTO 7: WEST ABUTMENT SCOUR - TYPICAL EXPOSED STEEL PILE



PHOTO 8: WEST ABUTMENT SCOUR - 22 FT. (LENGTH) X 6 FT. MAX (HEIGHT) X 6.5 FT. MAX (DEEP) EXPOSING 6 STEEL PILES

CITY OF BROKEN ARROW BRIDGE: 67
NBI NO.: 16464
STRUCTURE NO.: 72E0690N4020002

COUNTY: TULSA
FACILITY CARRIED: NEW ORLEANS ST.
FACILITY INTERSECTED: HAIKEY CREEK



PHOTO 9: WEST ABUTMENT SCOUR - 22 FT. (LENGTH) X 6 FT. MAX (HEIGHT) X 6.5 FT. MAX (DEEP) EXPOSING 6 STEEL PILES



PHOTO 10: WEST ABUTMENT SCOUR - 22 FT. (LENGTH) X 6 FT. MAX (HEIGHT) X 6.5 FT. MAX (DEEP) EXPOSING 6 STEEL PILES

CITY OF BROKEN ARROW BRIDGE: 67
NBI NO.: 16464
STRUCTURE NO.: 72E0690N4020002

COUNTY: TULSA
FACILITY CARRIED: NEW ORLEANS ST.
FACILITY INTERSECTED: HAIKEY CREEK

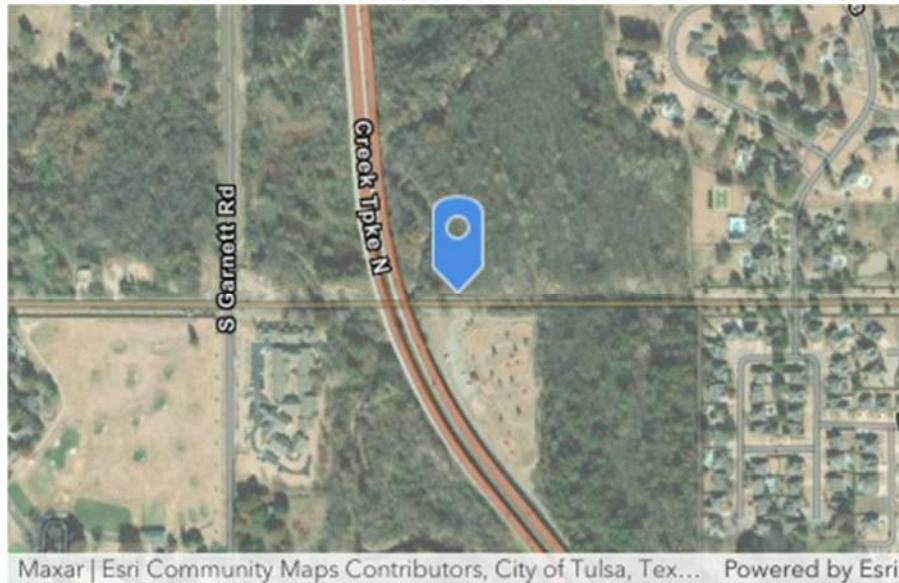
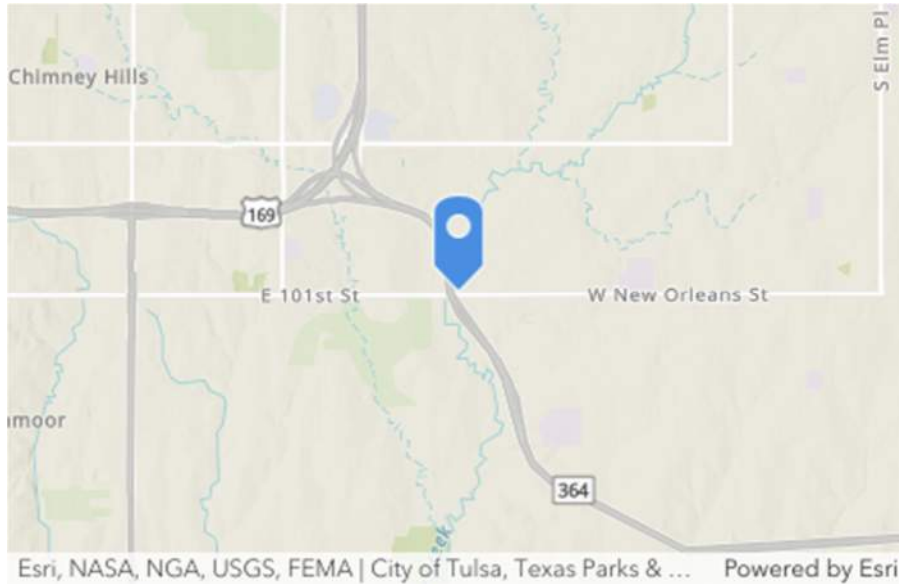


PHOTO 11: WEST
ABUTMENT SCOUR - 22
FT. (LENGTH) X 6 FT. MAX
(HEIGHT) X 6.5 FT. MAX
(DEEP) EXPOSING 6 STEEL
PILES

CITY OF BROKEN ARROW BRIDGE: 67
NBI NO.: 16464
STRUCTURE NO.: 72E0690N4020002

COUNTY: TULSA
FACILITY CARRIED: NEW ORLEANS ST.
FACILITY INTERSECTED: HAIKEY CREEK

INSPECTED BY: JMHoak@GarverUSA.com_Garver
INSPECTION DATE: 11/22/2024
LOCATION: -95.8477, 36.01746



LOCATION NOTES