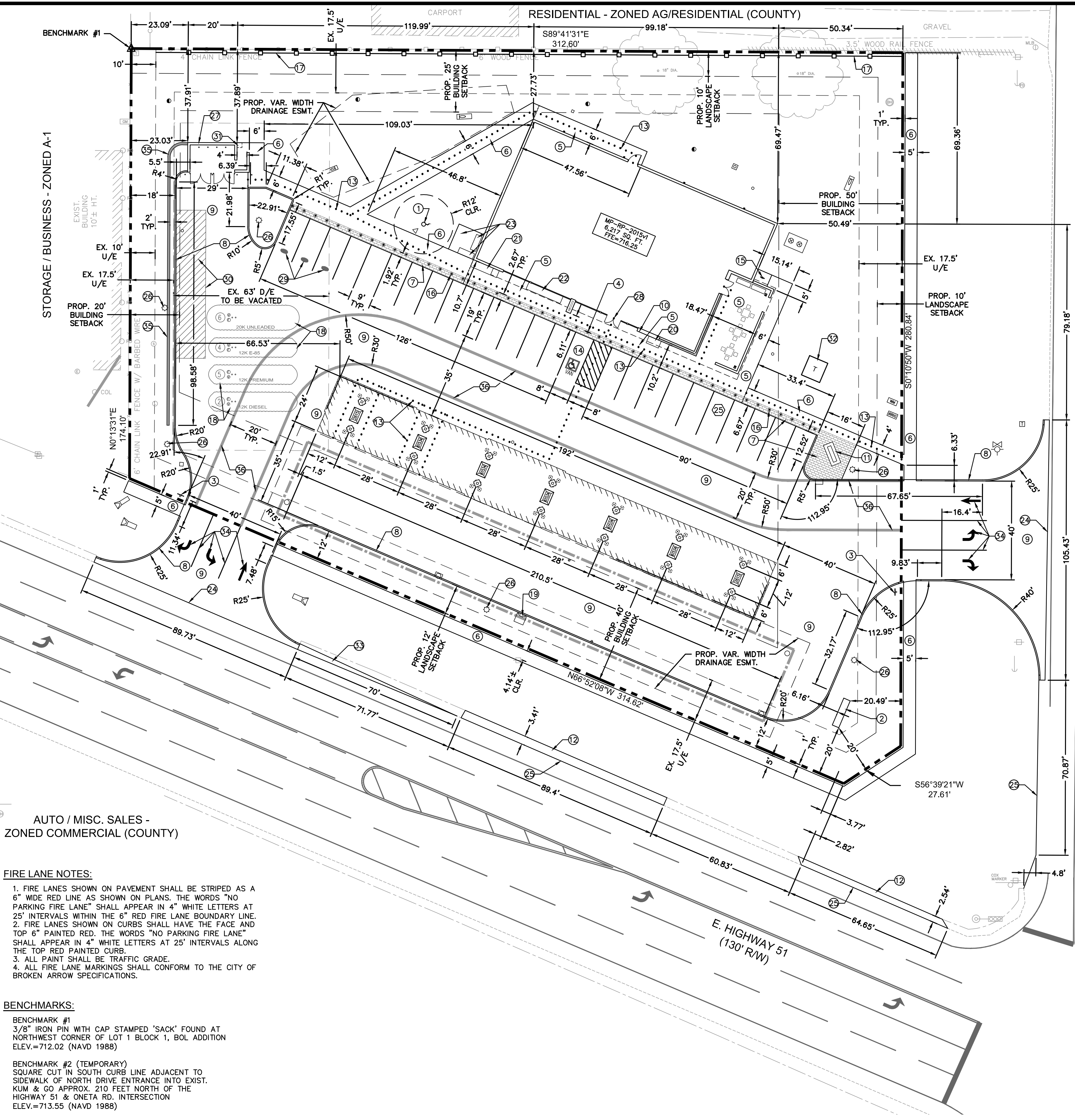


DWG: F:\PROJECTS\015-1926\40-Design\AutoCAD\Preliminary Plans\Sheets\LDVP\C_SIT_51926.dwg USER: mchodwick
 DATE: Dec 04, 2015 10:54am C:\BASE-PRE_51926 C:\BASE-PRE_51926

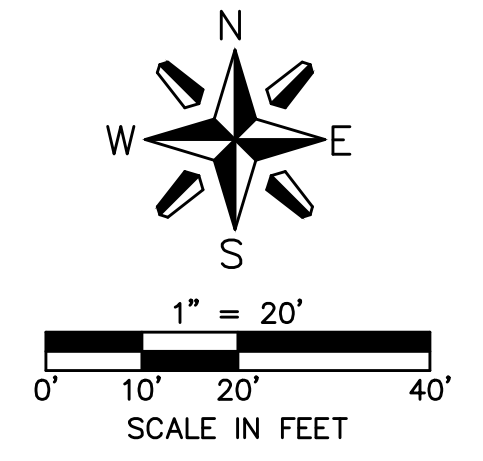



FLAG NOTES:

- 1 PROPOSED FLAGPOLE (40' HEIGHT), SEE DETAIL SHEET C5.2
- 2 PROPOSED MONUMENT SIGN (25' HEIGHT), SEE DETAIL SHEET C5.2
- 3 INSTALL R1-1 "STOP" SIGN PER MUTCD STANDARDS, SEE DETAIL SHEET C5.1
- 4 INSTALL BOLLARD MOUNTED ADA PARKING SIGN, SEE DETAIL SHEET C5.1
- 5 PROPOSED CONCRETE BUILDING SIDEWALK (1.5% MAX. SLOPE)
- 6 PROPOSED CONCRETE SIDEWALK, SEE DETAIL SHEET C5.1
- 7 PROPOSED DECORATIVE CONCRETE SIDEWALK TREATMENT, SEE SHEET C4.1
- 8 PROPOSED 6" INTEGRAL CONCRETE CURB, SEE DETAIL SHEET C5.1
- 9 PROPOSED CONCRETE PAVEMENT, SEE SHEET C4.1
- 10 APPROXIMATE LOCATION OF KNOX BOX. REFER TO ARCHITECTURAL PLANS FOR DETAILS & SPECIFICATIONS
- 11 PROPOSED 4'-0" X 9'-0" CONCRETE PAD FOR AMPERSAND ART SCULPTURE, SEE DETAIL SHEET C5.2
- 12 PROPOSED GRAVEL SHOULDER AT EDGE OF PAVEMENT REMOVAL PER ODOT STANDARDS
- 13 PROPOSED ADA ACCESSIBLE ROUTE, SEE SHEET C4.3
- 14 PROPOSED LIFT VAN ACCESSIBLE PARKING SPACE
- 15 INSTALL BOLLARD BIKE RACK, SEE DETAIL SHEET C5.1
- 16 INSTALL BOLLARD (SPACED AT 5'-0" O.C.), TYPICAL, SEE DETAIL SHEET C5.4 & C5.5
- 17 INSTALL 8' HT. SOLID WOOD SCREEN FENCE, SEE DETAIL SHEET C5.2
- 18 PROPOSED UNDERGROUND STORAGE TANK LOCATIONS
- 19 PROPOSED AIR MACHINE, SEE SHEET C5.1
- 20 PROPOSED ICE MERCHANDISE
- 21 PROPOSED RED BOX(ES) VENDING MACHINE
- 22 PROPOSED MISCELLANEOUS MERCHANDISE
- 23 PROPOSED 11' X 11' PAD FOR PROPANE CAGE, PLACED PER NFPA 58 REQUIREMENTS
- 24 LIMITS OF PROPOSED PAVEMENT
- 25 LIMITS OF PAVEMENT REMOVAL
- 26 PROPOSED LIGHT POLE, SEE PHOTOMETRIC PLAN ON SHEET SE1.1. ALL BASES SHALL BE PLACED 48" FROM CENTER OF BASE TO BACK OF CURB OR SIDEWALK UNLESS OTHERWISE NOTED ON PLANS
- 27 PROPOSED 12' X 20' TRASH ENCLOSURE, SEE ARCHITECTURAL PLANS
- 28 FRONT ENTRY, SEE ARCHITECTURAL PLANS
- 29 PROPOSED 1' X 2' SOLID RED OVAL FOR KUM & GO ASSOCIATE PARKING
- 30 PROPOSED 12' X 60' LOADING ZONE, SEE SHEET C4.1
- 31 PROPOSED 2' X 2' DESIGNATED SMOKING AREA
- 32 PROPOSED TRANSFORMER PAD LOCATION, SEE SHEET C3.1
- 33 INSTALL ASPHALT PAVEMENT TAPER TO MATCH EXISTING SECTION
- 34 INSTALL ENTRANCE PAVEMENT MARKINGS, SEE DETAIL SHEET C5.2
- 35 PROPOSED MODULAR BLOCK RETAINING WALL
- 36 STRIPE FIRE LANE. SEE FIRE LANE NOTES ON THIS SHEET


LEGEND

- PROPOSED BOUNDARY
- SETBACK LINE
- EXISTING EASEMENT LINE
- LIMITS OF UNDERGROUND DETENTION SYSTEM
- PROPOSED INTEGRAL CONCRETE CURB
- ADA ACCESSIBLE ROUTE
- PROPOSED BUILDING
- PROPOSED DECORATIVE SIDEWALK TREATMENT
- PROPOSED BOLLARD
- PROPOSED SANITARY SEWER CLEANOUT
- PROPOSED SAMPLING MANHOLE
- PROPOSED GREASE INTERCEPTOR
- PROPOSED WATER METER
- PROPOSED IRRIGATION METER
- PROPOSED PUBLIC FIRE HYDRANT
- PROPOSED STORM SEWER CLEANOUT
- PROPOSED FLARED END SECTION
- PROPOSED STORM SEWER STRUCTURE
- PROPOSED UNDERGROUND DETENTION INSPECTION PORT
- PROPOSED STORM SEWER STRUCTURE
- PROPOSED TELEPHONE PEDESTAL
- PROPOSED TRANSFORMER
- PARKING STALL COUNT PER BAY
- BENCHMARK
- EXIST. SIGN
- EXIST. MAILBOX
- EXIST. DECIDUOUS TREE
- EXIST. TELEPHONE PEDESTAL
- EXIST. GAS METER
- EXIST. GUY WIRE
- EXIST. POWER POLE
- EXIST. SANITARY SEWER LAMPHOLE
- EXIST. SANITARY SEWER MANHOLE
- EXIST. SEWER CLEANOUT
- EXIST. ROOF DRAIN
- EXIST. FIBER OPTIC POST
- EXIST. ELECTRIC PEDESTAL
- EXIST. TRANSFORMER
- EXIST. TRAFFIC SIGNAL MANHOLE
- EXIST. TRAFFIC SIGNAL WITH ARM
- EXIST. FIRE HYDRANT
- EXIST. WATER METER
- EXIST. WATER VALVE
- EXIST. EDGE OF ASPHALT
- EXIST. CONCRETE CURB
- EXIST. EDGE OF GRAVEL
- EXIST. CHAINLINK FENCE W/ BARBED WIRE
- EXIST. WOOD FENCE
- EXIST. CHAINLINK FENCE
- EXIST. SPLIT RAIL FENCE
- PROPOSED WOOD FENCE





Olsson Associates, Inc.
 500 S. Walnut St.
 Des Moines, IA 50319
 TEL: 515-281-8800
 FAX: 515-281-8800
 www.olssonassociates.com



6400 Westown Parkway
 West Des Moines, Iowa
 50266
 P: 515-226-0128
 F: 515-223-9873

#837 - BROKEN ARROW, OK
 24055 E. HIGHWAY 51

SITE PLAN

KG PROJECT TEAM:
 RDR: JWH
 SDM: NDH
 CPM: SDN

DATE	REVISION DESCRIPTION	REVISIONS

DATE: 12-04-15

SHEET NUMBER:
C1.1
 2 OF 13