

Final Plat - PUD #147

5917 Bristol Ponds

AN ADDITION TO THE CITY OF BROKEN ARROW, TULSA COUNTY, STATE OF OKLAHOMA; BEING A PART OF THE SE/4 OF SECTION 15, T-18-N, R-14-E, OF THE INDIAN BASE AND MERIDIAN; A RESUBDIVISION OF PART OF 'METROLAND COMMERCIAL CENTER', AN ADDITION TO THE CITY OF BROKEN ARROW, TULSA COUNTY, STATE OF OKLAHOMA (PLAT #4955) AND PART OF 'VILLAGE PARK', AN ADDITION TO THE CITY OF BROKEN ARROW, TULSA COUNTY, STATE OF OKLAHOMA (PLAT #5152)

Owner/Developer
 BREEZE PETROLEUM, LLC
 7170 S. BRADEN AVE. #200
 TULSA, OK 74136
 PHONE: (918) 492-5090

Engineer/Surveyor
 HALL, ROSENBAUM, ALMON & ASSOCIATES, INC.
 1913 WEST TACOMA, SUITE-C
 BROKEN ARROW, OKLAHOMA 74012-1472
 PHONE: (918) 258-3737
 FAX: (918) 258-2554
 C.A.#3643 EXPIRES JUNE 30, 2007

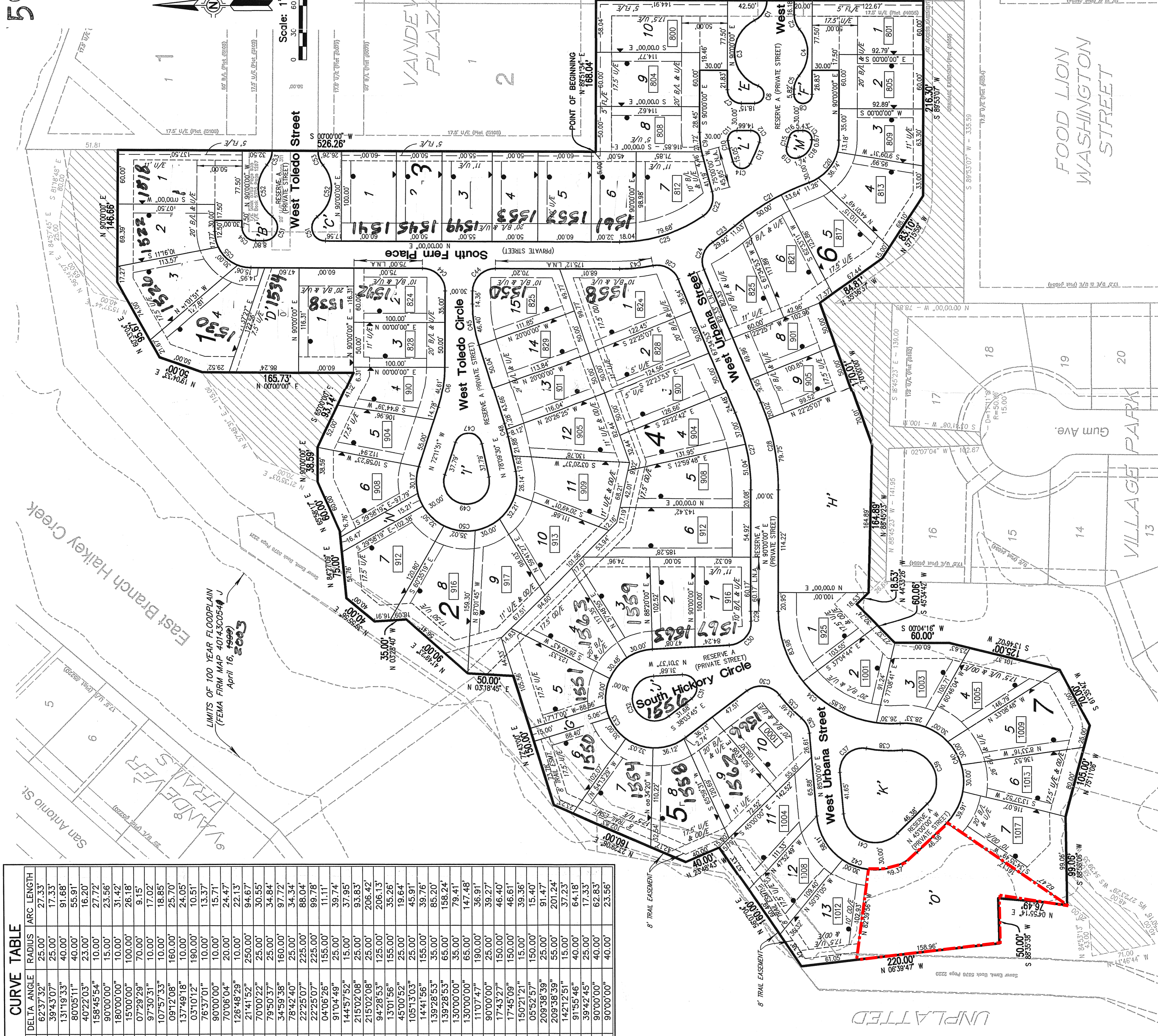
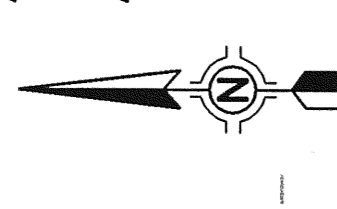
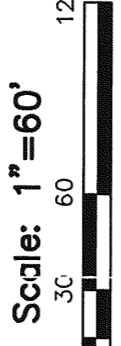
Basis of Bearing
 PLATTED BEARING OF S 00°00'00" W
 ALONG THE WEST LINE OF "VANDEVER
 PLAZA II" AND ADDITION TO THE CITY
 OF BROKEN ARROW, TULSA COUNTY,
 STATE OF OKLAHOMA (PLAT NO. 5108).

Notes
 ADDRESSES SHOWN ON THIS PLAT WERE
 ACCURATE AT THE TIME THIS PLAT WAS
 FILED. ADDRESSES ARE SUBJECT TO
 CHANGE AND SHOULD NEVER BE RELIED
 ON IN PLACE OF LEGAL DESCRIPTION.

Monumentation
 ALL CORNERS SHOWN HEREON WERE
 SET USING A #3 X 18" REBAR PIN
 WITH A PLASTIC CAP STAMPED "PLS
 1283". UNLESS OTHERWISE NOTED.

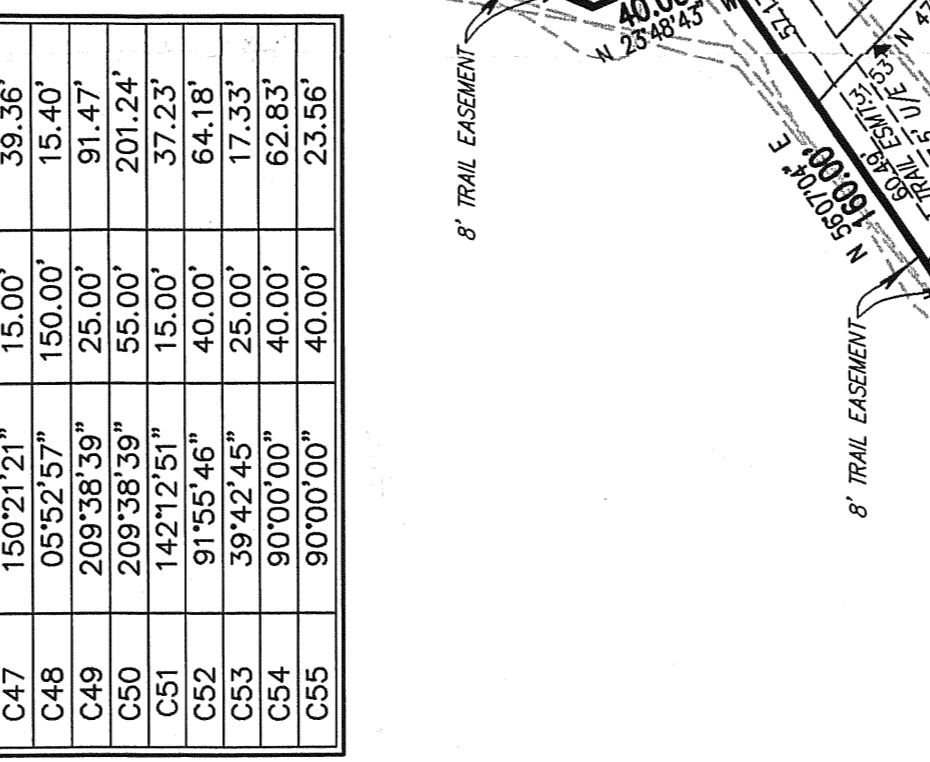
Monumentation
 ALL PRIVATE STREETS SHOWN HEREON
 ARE DEDICATED AS RESERVE A BY THIS
 PLAT.

ALL WATER AND SANITARY SEWER
 SERVICES WILL BE SUPPLIED AND
 MAINTAINED BY THE CITY OF BROKEN
 ARROW.



BLOCK	LOTS	FINISH FLOOR ELEVATION	TOP OF MANHOLE ELEVATION
1	1	706.50	28
1	2	706.50	28
1	3	706.50	28
1	4	706.50	28
1	5	706.50	28
2	1	706.50	28
2	2	706.50	28
2	3	706.50	28
2	4	706.50	28
2	5	706.50	28
2	6	706.50	28
2	7	706.50	28
2	8	706.50	28
2	9	706.50	28
2	10	706.50	28
2	11	706.50	28
2	12	706.50	28
2	13	706.50	28
2	14	706.50	28
2	15	706.50	28
3	1	709.50	29
3	2	709.50	29
3	3	709.50	29
3	4	709.50	29
3	5	709.50	29
3	6	709.50	29
3	7	709.50	29
3	8	709.50	29
3	9	709.50	29
3	10	709.50	29
3	11	709.50	29
3	12	709.50	29
3	13	709.50	29
3	14	709.50	29
3	15	709.50	29
4	1	704.50	18
4	2	704.50	18
4	3	704.50	18
4	4	704.50	18
4	5	704.50	18
4	6	704.50	18
4	7	704.50	18
4	8	704.50	18
4	9	704.50	18
4	10	704.50	18
4	11	704.50	18
4	12	704.50	18
4	13	704.50	18
4	14	704.50	18
4	15	704.50	18
5	1	704.00	6
5	2	704.00	6
5	3	704.00	6
5	4	704.00	6
5	5	704.00	6
5	6	704.00	6
5	7	704.00	6
5	8	704.00	6
5	9	704.00	6
5	10	704.00	6
5	11	704.00	6
5	12	704.00	6
5	13	704.00	6
5	14	704.00	6
5	15	704.00	6

NUMBER	DELTA ANGLE	RADIUS	ARC LENGTH
C1	62.3732°	25.00'	27.33'
C2	39.4307°	25.00'	17.33'
C3	131.1933°	40.00'	91.68'
C4	80.0511°	40.00'	55.91'
C5	40.2203°	10.00'	16.20'
C6	158.4554°	10.00'	27.72'
C7	90.0000°	15.00'	23.56'
C8	180.0000°	10.00'	31.42'
C9	15.0000°	100.00'	26.18'
C10	97.3031°	70.00'	9.15'
C11	107.5733°	10.00'	17.02'
C12	89.1208°	10.00'	18.85'
C13	137.4918°	10.00'	24.05'
C14	3.1012°	190.00'	10.51'
C15	76.3701°	10.00'	13.37'
C16	90.0000°	10.00'	15.71'
C17	70.0604°	20.00'	24.47'
C18	126.9829°	10.00'	22.13'
C19	121.4152°	250.00'	94.67'
C20	70.0022°	25.00'	30.55'
C21	79.5037°	25.00'	34.84'
C22	78.4240°	160.00'	97.72'
C23	22.2507°	25.00'	34.34'
C24	22.2507°	225.00'	88.04'
C25	40.0626°	155.00'	99.78'
C26	91.0449°	25.00'	11.11'
C27	144.5752°	15.00'	39.74'
C28	215.0208°	25.00'	37.95'
C29	215.0208°	25.00'	93.83'
C30	94.2853°	125.00'	206.42'
C31	13.0156°	155.00'	35.26'
C32	45.0052°	25.00'	19.64'
C33	105.1303°	25.00'	49.91'
C34	14.4156°	155.00'	39.76'
C35	139.2853°	35.00'	85.20'
C36	139.2853°	65.00'	158.24'
C37	130.0000°	65.00'	179.41'
C38	130.0000°	65.00'	147.48'
C39	110.0000°	190.00'	36.91'
C40	90.0000°	25.00'	39.27'
C41	17.4327°	150.00'	46.40'
C42	17.4327°	150.00'	46.61'
C43	15.0221°	15.00'	39.36'
C44	05.5257°	150.00'	15.40'
C45	209.3839°	55.00'	201.24'
C46	14.2121°	15.00'	37.23'
C47	91.5546°	40.00'	64.18'
C48	39.4245°	25.00'	17.33'
C49	90.0000°	40.00'	62.83'
C50	90.0000°	40.00'	23.56'



CERTIFICATE
 I hereby certify that all real estate taxes involved in this plat have been paid as reflected by the current tax rolls. Security as required has been provided in the amount of \$ 8,557.00 per trust receipt no. 055555 to be applied to 20 05 taxes. This certificate is NOT to be construed as payment of 20 05 taxes in full but only in order that this plat may be filed on record. NO fee may be collected in excess of the amount of the certificate. \$ 8,557.00
 Date: 11/02/05
 Tulsa County Clerk
 By: *[Signature]*
 Deputy

APPROVED 11-05 by the City Council of the City of Broken Arrow, Oklahoma.
 Mayor: *[Signature]*
 Attest: City Clerk: *[Signature]*
 Dated the 11th day of November, 2005
 EARLENE WILSON, Tulsa County Clerk
 Deputy

STATE OF OKLAHOMA }
 COUNTY OF TULSA }
 I, County Clerk, do hereby certify that the foregoing is a true and correct copy of a file maintained now on file in my office.
 Dated the 11th day of November, 2005
 EARLENE WILSON, Tulsa County Clerk
 Deputy

Legend
 B/L BUILDING LINE
 U/E UTILITY EASEMENT
 T/E TURNAROUND EASEMENT
 F/E FENCE & LANDSCAPE EASEMENT
 M/AE MUTUAL ACCESS EASEMENT
 O/E OVERLAP DRAINAGE EASEMENT
 R/W RIGHT OF WAY
 LNA LIMITS OF NO ACCESS
 POB POINT OF BEGINNING
 TRAFFIC CONTROL MEDIAN
 [] STREET ADDRESS
 [] AREA DEDICATED TO CITY OF BROKEN ARROW
 [] 10' BUILDING SETBACK LINE
 [] MANDATORY BUILDING LINE

BACKFLOW PREVENTER VALVE TABLE