

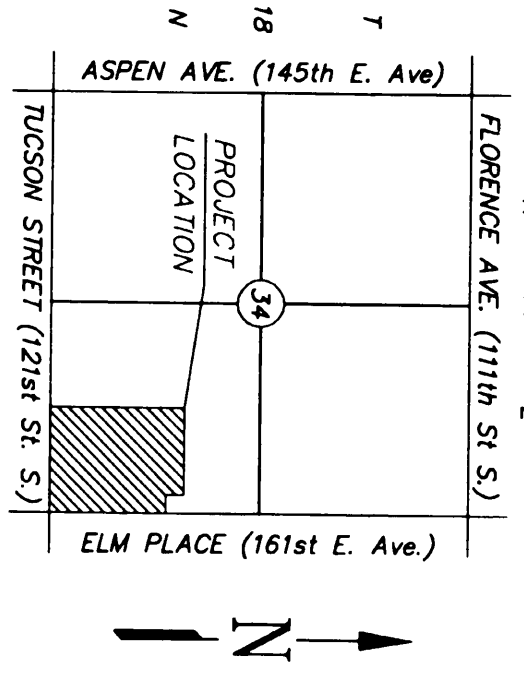
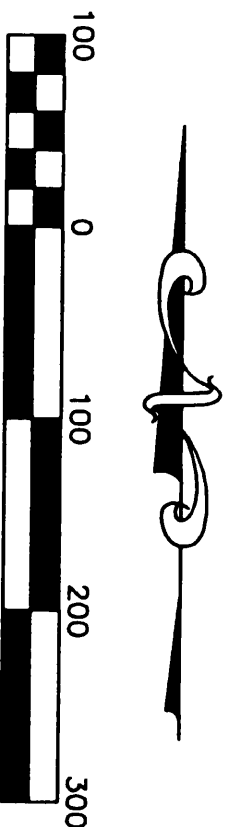
Tulsa County Clerk - EARLINE WILSON
 Plat # 02102623, Page 1 of 2, 6803/2001-2007
 Record # 601534 08/15/02 14:20:23
 Fee 15.00

-5633 WATERLOO WAY

PUD 126

A PART OF THE SE/4 OF SECTION 34, T-18-N, R-14-E, I.M.
 BROKEN ARROW, TULSA COUNTY, OKLAHOMA

FINAL PLAT



LEGEND

- D/E = DRAINAGE EASEMENT
- U/E = UTILITY EASEMENT
- R/D = ROW DEDICATED BY THIS PLAT
- B/L = BOUNDING LINE
- ROW = RIGHT OF WAY
- ROW DEDICATED BY THIS PLAT
- P.O.B. = POINT OF BEGINNING
- L.I.A. = LINE OF INTERSECTION
- L/E = LANDSCAPE EASEMENT
- O.H.E. = OVERHEAD ELECTRIC
- 6-00 = ADDRESS

OWNER/DEVELOPER:
 WAIN & MCGALLER CO. INC.
 2001 S.E. 10TH ST.
 BENTONVILLE, ARK. 72716-0560
 (901) 277-7700

ENGINEER:
 SPRENG & MCGALLER CO. INC.
 2001 S.E. 10TH ST.
 BENTONVILLE, ARK. 72716-0560
 (901) 277-7715

SURVEYOR:
 SMITH ROBERTS BALDOWILLER, LLC
 25 S. OKLAHOMA AVE., SUITE 400
 OKLAHOMA CITY, OK. 73104
 (405) 840-7094
 C.A. NUMBER 3848, EXPIRES JUNE 30, 2003

NOTE:
 EASEMENTS SHOWN HEREON OR SPECIFIC RECORDING INFORMATION ARE SHOWN FOR REFERENCE PURPOSES ONLY AND ARE NOT DEDICATED PURSUANT TO THIS FINAL PLAT. ADDRESSES SHOWN ON THIS PLAT WERE PROVIDED BY THE OWNER AND WERE ACCURATE AT THE TIME THE PLAT WAS FILED ON IN FORCE OF THE DEED DESCRIPTION.

- BM #1 CURT "C" CENTER OF HEADWALL
 EAST N.E. CORNER
 ELEVATION 88.81 CITY DATUM
- BM #2 DOUBLE END NAILS IN S. SIDE
 150' N. OF S.W. CORNER
 ELEVATION 88.81 CITY DATUM
- BM #3 DOUBLE END NAILS IN S. SIDE
 150' N. OF S.W. CORNER
 ELEVATION 88.81 CITY DATUM
- BM #4 DOUBLE END NAILS IN S.S.W. CORNER
 150' N. OF S.W. CORNER
 ELEVATION 88.81 CITY DATUM

NOTE: THE LIMIT OF MEASUREMENT SHOWN FOR DIMENSIONS ON THE FINAL PLAT IS FEET.
 The assumed bearing of South 88°36'59" West as shown on certificate of Tucson Street is the basis of bearing used for this survey.

APPROXIMATE LOT SUMMARY

LOT #1	22.92 AC.
LOT #2	11.81 AC.
LOT #3	0.87 AC.
LOT #4	1.83 AC.
LOT #5	1.10 AC.
LOT #6	1.12 AC.
RSV #A/B	3.15 AC.
RSV #C	0.95 AC.
PTG RD R/W	3.78 AC.
TOTAL	48.71 AC.

APPROVED 4-11-01 by the City Council of the City of Broken Arrow, Oklahoma.
 Attest: City Clerk, M. J. O'Neil

