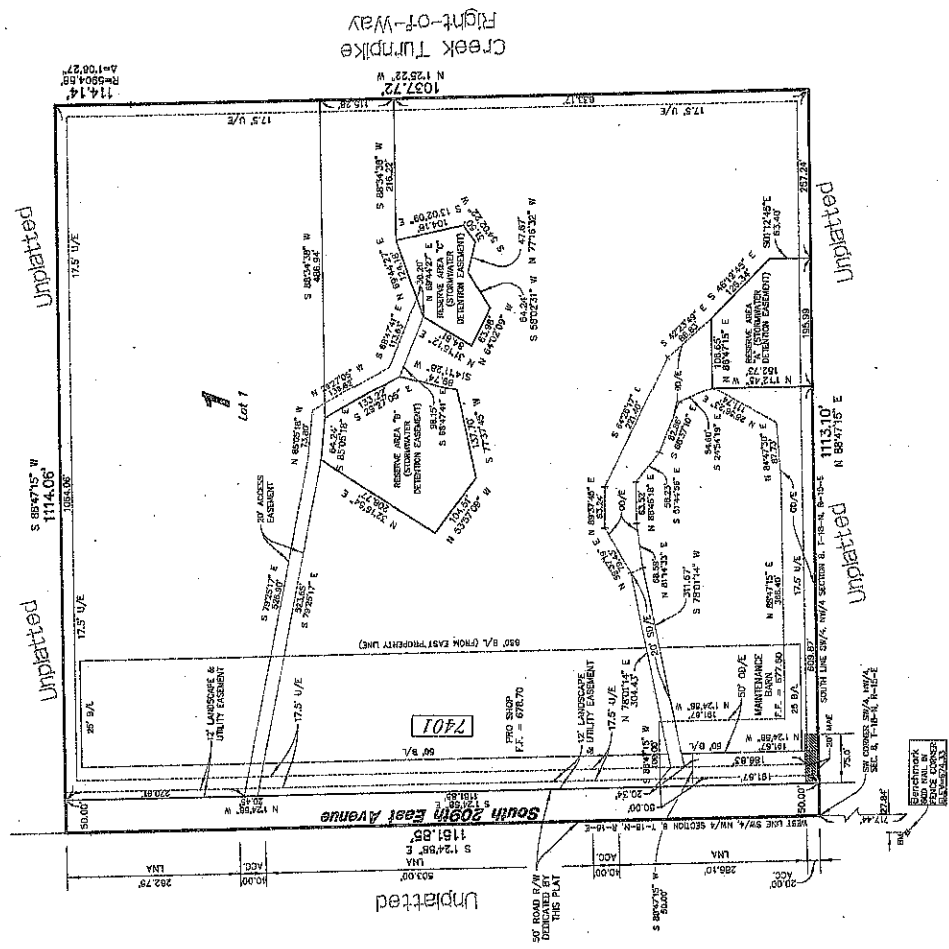
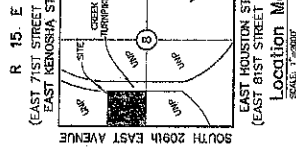


# Tee Town Golf Ranch

PART OF THE SW/4 OF SECTION 5, TOWNSHIP 18 NORTH, RANGE 15 EAST,  
 OF THE INDIAN BASE & MERIDIAN, A SUBDIVISION IN THE CITY OF BROKEN ARROW, WAGONER COUNTY, OKLAHOMA



Scale: 1"=100'

**Benchmark and Datum**  
 580 WALNUT CORNER 777.44 FEET SOUTH  
 CHANGING PROPERTY  
 CORNER ELEV: 674.33 (NVD 29)

**Basis of Bearings**  
 BASIS OF BEARINGS IS ASSUMED USING THE  
 WEST LINE OF THE NW/4 AS S 07243P E.

**Monumentation**  
 MONUMENTS SET AT ALL PROPERTY CORNERS.

- Legend:**
- B/L = BENCHMARK
  - L/A = LANTERN
  - L/E = LANDSCAPE EMBELLISHMENT
  - L/S = LOT SURFACE EMBELLISHMENT
  - S/E = SURFACE EMBELLISHMENT
  - D/E = DRIVE AND DRIVEWAY EMBELLISHMENT
  - U/A = UNITS OF NO ACCESS
  - F/L = FENCED FLOOR LAMP
  - M/A = METAL ACCESS EMBELLISHMENT
  - S/S = STREET ADDRESS

**notes:**  
 ALL LINES SHOWN ON THIS PLAT ARE DRAWN BY THE  
 ENGINEERING DEPARTMENT OF THE CITY OF BROKEN ARROW  
 AND WERE ACCURATE AT THE TIME THE PLAT WAS FILED.  
 THE ENGINEER HAS CONDUCTED A VISUAL INSPECTION AND  
 NOT BE RELIED ON IN PLACE OF THE LEGAL DESCRIPTION.

**Owner/Developer:**  
**Tee Town Golf Ranch, Inc.**  
 An Oklahoma Corporation  
 1212 East 167th Street South  
 Glenpool, Oklahoma 74033  
 Phone: (918) 827-5891

**Engineer/Surveyor:**  
**Sisemore Weisz & Associates, Inc.**  
 Certificate of Authorization No. 2423 Exp. June 30, 2003  
 6111 East 32nd Place  
 Tulsa, Oklahoma 74135  
 Phone: (918) 865-3600

APPROVED: 5/6/02 By the City  
 Council of the City of Broken Arrow,  
 Oklahoma.  
 Mayor: James C. Reynolds  
 City Clerk: Brenda Ray Orr

STATE OF OKLAHOMA )  
 COUNTY OF WAGONER ) SS  
 I, the undersigned, County Clerk of Wagoner County, Oklahoma, do hereby certify that  
 this plat was filed in accordance with the provisions of the Oklahoma Statutes  
 relating to the recording of plats and that the same are correct copies of the  
 original as filed with me.  
 Dated this 5/13 day of May, 2002.  
 Wagoner County Clerk

**CERTIFICATE**  
 I hereby certify that all real estate taxes levied in this plat have  
 been paid in full to the satisfaction of the County Clerk of Wagoner County,  
 Oklahoma, and that the same have been paid to the amount of \$2,820.70  
 per tract except tax \$279 to be credited on payment of 2002 taxes.  
 This certificate is not to be construed as payment of 2002 taxes.  
 The amount of taxes levied on this plat is \$2,820.70.  
 2002 taxes shall exceed the amount of the security deposit.  
 Paid: \$2,820.70  
 5/28/02

Wagoner County Treasurer  
 by: *[Signature]*

