

UNION
PUBLIC
SCHOOLS

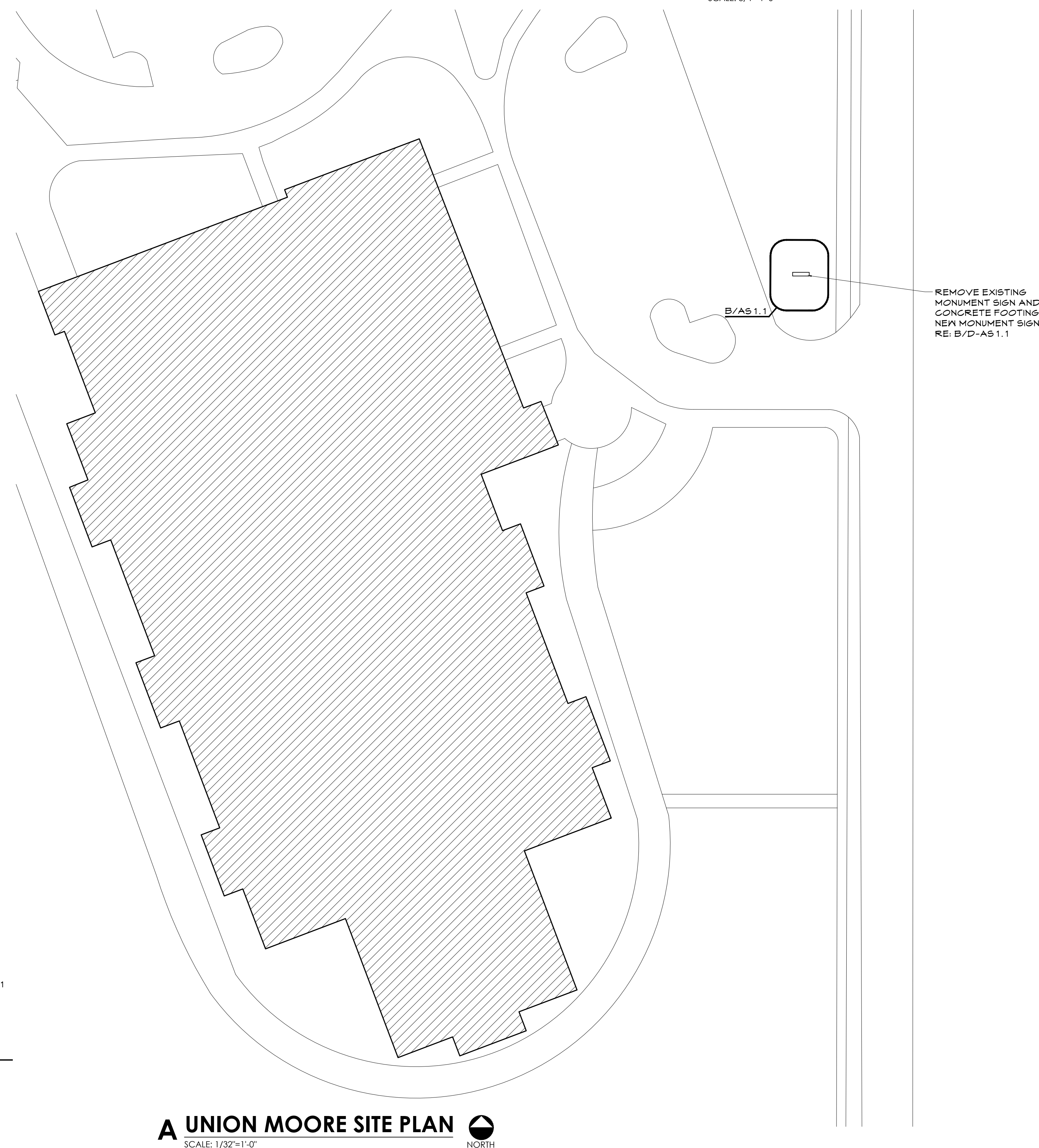
STATE OF OKLAHOMA
ANDREW A. KINSLOW
No. 2941
TULSA OKLA.
LICENSED ARCHITECT

03/18/19

[illegible]

SITE PLAN

MO-AS1.1



A UNION MOORE SITE PLAN

SCALE: 1/32"=1'-0"

NORTH