

Scale: 1"=300'

Legend:

	Ridgelines
	Drainageways

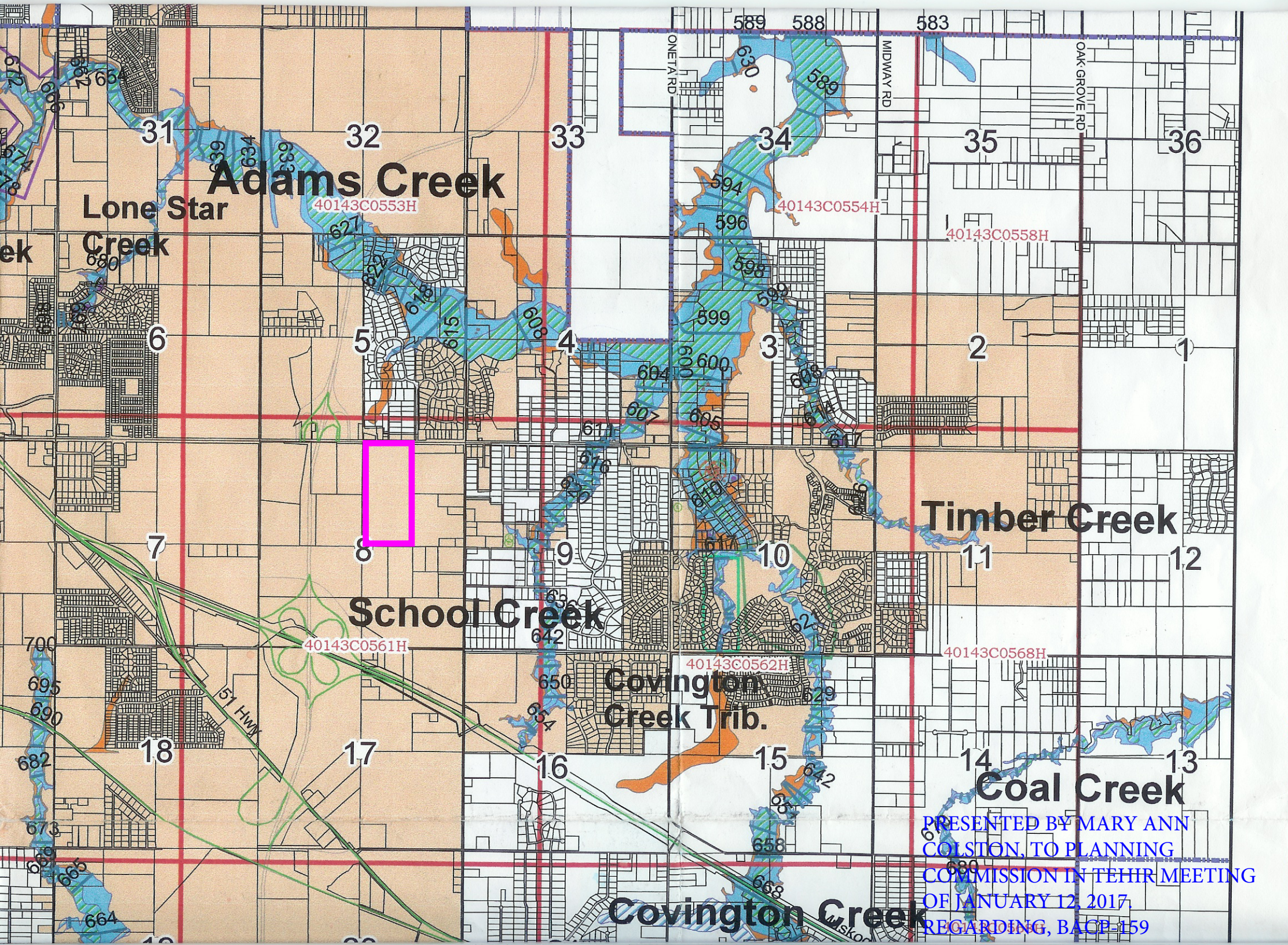
Line Table

No.	Bearing	Distance
L1	N 01°19'28"W	150.00'
L2	N 02°29'23"E	150.33'
L3	N 01°19'28"W	65.00'
L4	N 43°40'32"E	49.50'

PRESENTED BY MARY ANN COLSTON, TO PLANNING COMMISSION IN TEHIR MEETING OF JANUARY 12, 2017. REGARDING, BACP-159

Exhibit C
Muhich Tract
 Existing Conditions Plan





Adams Creek

Lone Star

Creek

Timber Creek

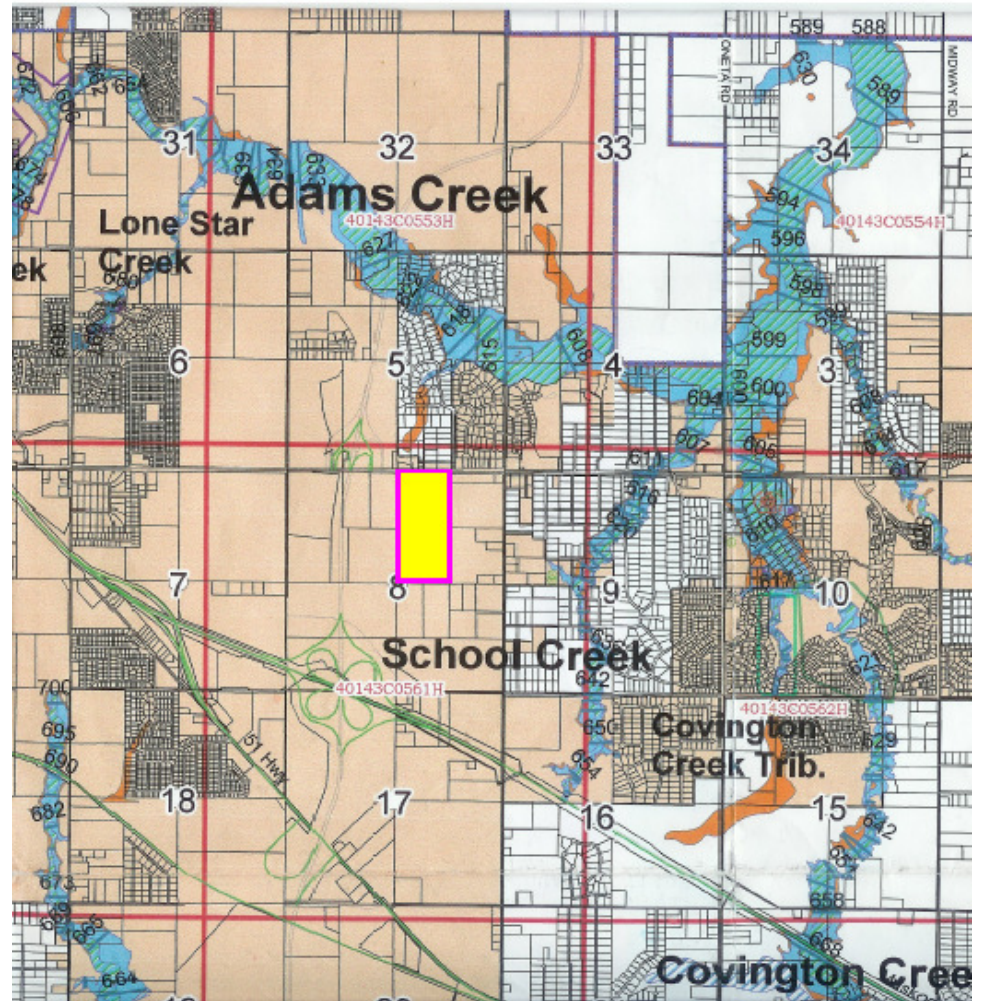
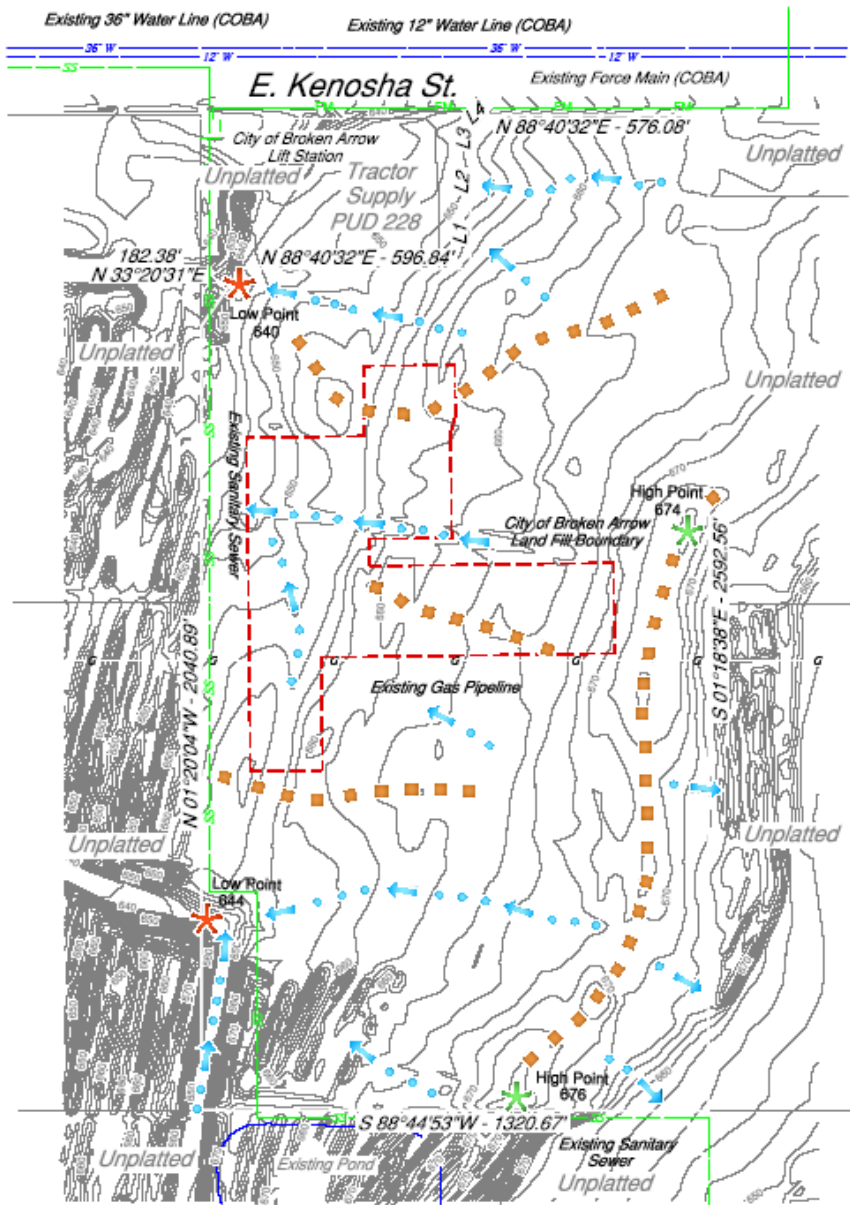
School Creek

Covington
Creek Trib.

Coal Creek

Covington Creek

PRESENTED BY MARY ANN COLSTON, TO PLANNING COMMISSION IN THEIR MEETING OF JANUARY 12, 2017, REGARDING, BACP-159



PRESENTED BY MARY ANN COLSTON, TO PLANNING COMMISSION IN THEIR MEETING OF JANUARY 12, 2017. REGARDING, BACP-159