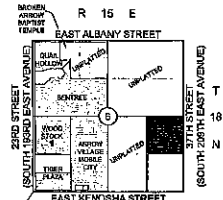
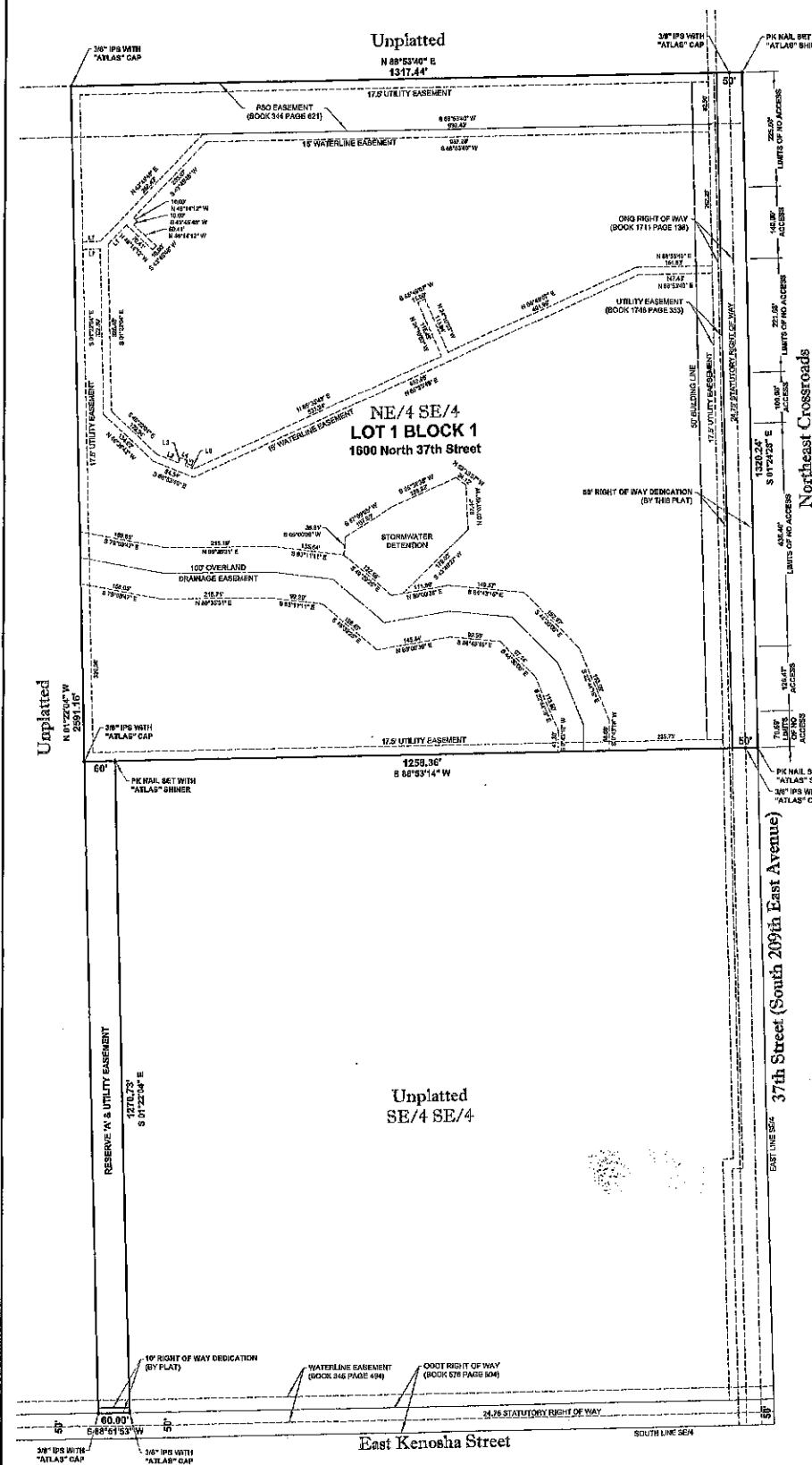


# Exhibit A BAPS ES #15 & MS #6

A SUBDIVISION OF THE SOUTHEAST QUARTER (SE/4) OF SECTION SIX (6), TOWNSHIP EIGHTEEN (18) NORTH, RANGE FIFTEEN (15) EAST, OF THE INDIAN BASE AND MERIDIAN, CITY OF BROKEN ARROW, WAGONER COUNTY, STATE OF OKLAHOMA, ACCORDING TO THE U.S. GOVERNMENT SURVEY THEREOF.



### Location Map

### Subdivision Statistics

SUBDIVISION CONTAINS ONE (1) LOT IN ONE (1) BLOCK:  
 GROSS SUBDIVISION AREA:  
 181,823.78 SQ. FEET / 4.130 ACRES



**Owner / Developer**  
 BROKEN ARROW PUBLIC SCHOOLS  
 731 SOUTH MAIN  
 BROKEN ARROW, OK 74012  
 PHONE: (918) 258-7400  
 EMAIL: info@bapublicschools.org

**Engineer**  
 WALLACE ENGINEERING -  
 STRUCTURAL CONSULTANTS, INC.  
 200 EAST MATTHEW BRADY STREET  
 TULSA, OKLAHOMA 74103  
 PHONE: (918) 584-5835  
 WWW.WEENGINEERING.COM  
 C.A. #1450 EXPIRES 6-30-2017

**Surveyor**  
 ATLAS LAND OFFICE, LLC  
 202 SOUTH MAIN STREET  
 WAGONER, OKLAHOMA 74467  
 PHONE: (918) 465-9987  
 EMAIL: info@atlaslandoffice.com  
 C.A. # 8152 EXPIRES: 6-30-2018

**Monumentation**  
 ALL CORNERS SHOWN HEREON WERE SET  
 USING A 3/8" x 18" STEEL PIN WITH A  
 PLASTIC CAP STAMPED "ATLAS 6152" AT ALL  
 CORNERS.

### Addresses

ADDRESSES SHOWN ON THIS PLAT WERE  
 ACCURATE AT THE TIME THIS PLAT WAS  
 FILED. ADDRESSES ARE SUBJECT TO  
 CHANGE AND SHOULD NEVER BE RELIED ON  
 IN PLACE OF LEGAL DESCRIPTION.

### Basis of Bearings

NON-ASTRONOMICAL GRID BEARINGS OF  
 THE OKLAHOMA STATE PLANE COORDINATE  
 SYSTEM - ZONE NORTH

### Benchmark

3" ALUMINUM CAP-FLUSH SET IN  
 CONCRETE STAMPED "DA 37" SET NW. OF  
 9187 ST, AND 1830 D LANE  
 ELEVATION = 608.373 (NAVD 83)

### Water and Sewer

SANITARY SEWER SERVICES WILL BE  
 SUPPLIED AND MAINTAINED BY THE CITY OF  
 BROKEN ARROW. WATER SERVICES WILL  
 BE SUPPLIED AND MAINTAINED BY RURAL  
 WATER DISTRICT #1.

### Detention Determination

STORM WATER DETENTION WILL BE  
 PROVIDED IN ACCORDANCE WITH  
 DETENTION DETERMINATION # 06-2414-41

Line Table		
NO.	DISTANCE	BEARING
1.1	52.20'	S 47° 00' 00" E
1.2	44.47'	S 31° 00' 00" E
1.3	11.82'	S 81° 00' 00" W
1.4	13.89'	S 89° 00' 00" W
1.5	10.27'	S 27° 00' 00" W
1.6	17.34'	S 58° 00' 00" E
1.7	34.87'	S 89° 00' 00" E

APPROVED BY THE CITY  
 COUNCIL OF THE CITY OF BROKEN ARROW,  
 OKLAHOMA  
 MAYOR CRAIG THURGOOD  
 ATTEST: CITY CLERK

COUNTY TREASURER STAMP


 OFFICE OF THE COMMISSIONER  
 COMMISSIONER #12001513

County Recorder  
*Don Hendrich*  
 Don Hendrich, Wagoner County Clerk


 CASE #PT18-101  
 HAPS #16 & MS #6  
 SHEET 2 OF 2