

JOB 26308      PIECE 04

PARCEL NO. 21.0

COUNTY: TULSA

PROJECT: 23rd Street Improvements  
- Kenosha to Houston

TOTAL PROPERTY DESCRIPTION: SE/4 OF THE  
SE/4

SEC. 12, T-18-N, R-14-E

SCALE 1" = 1600'

BEFORE GROSS	656,942.00 SQ. FT.	15.08 ACRES
EXISTING R/W	72,094.42 SQ. FT.	1.66 ACRES
PERMANENT R/W	18,931.18 SQ. FT.	0.43 ACRES
REM IN OTR	565,916.40 SQ. FT.	12.99 ACRES
PERPETUAL EASEMENT	0.00 SQ. FT.	0.00 ACRES
TEMP R/W	0.00 SQ. FT.	0.00 ACRES
TEMP R/W	0.00 SQ. FT.	0.00 ACRES

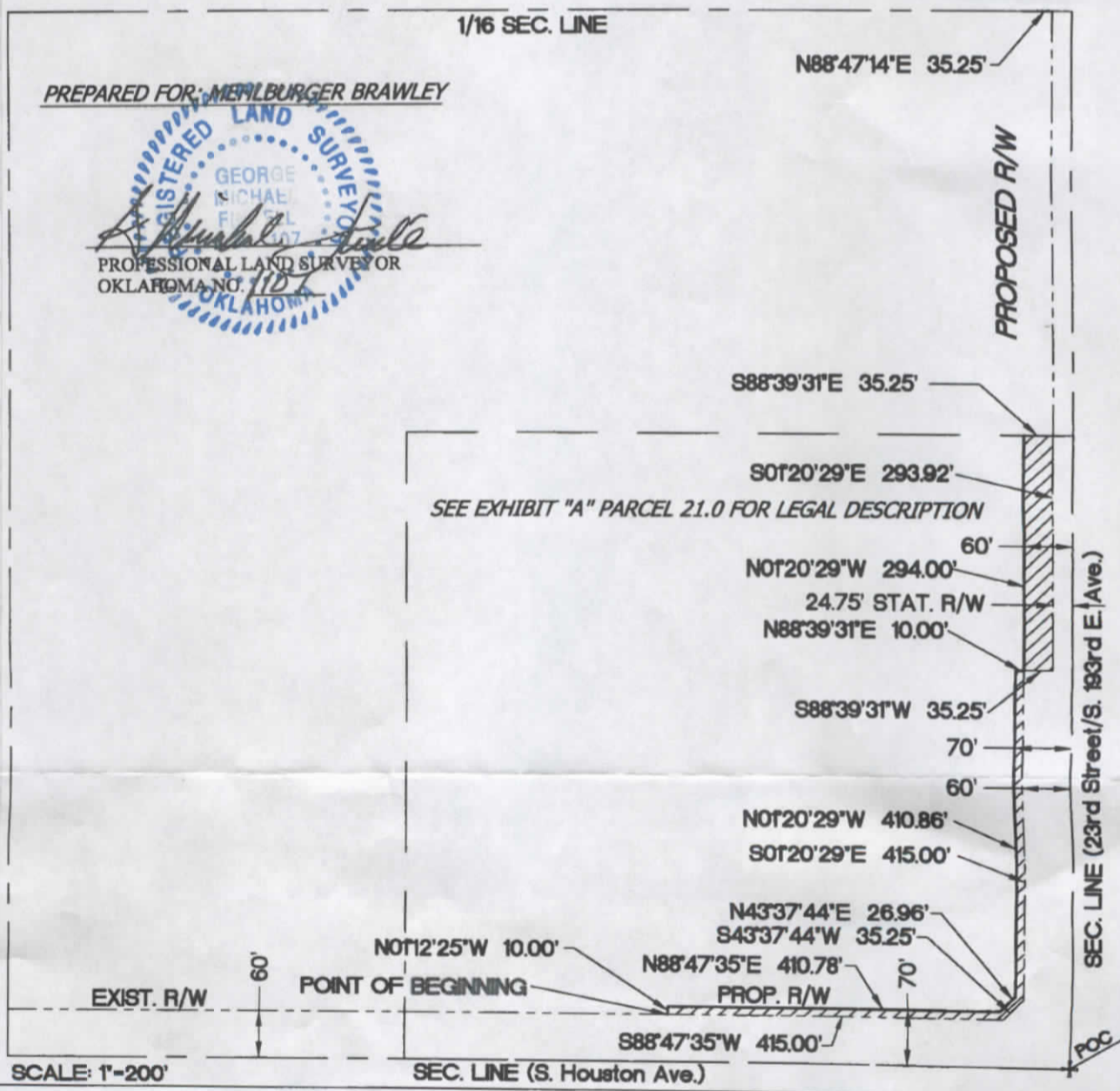


FIGURE 2.0