

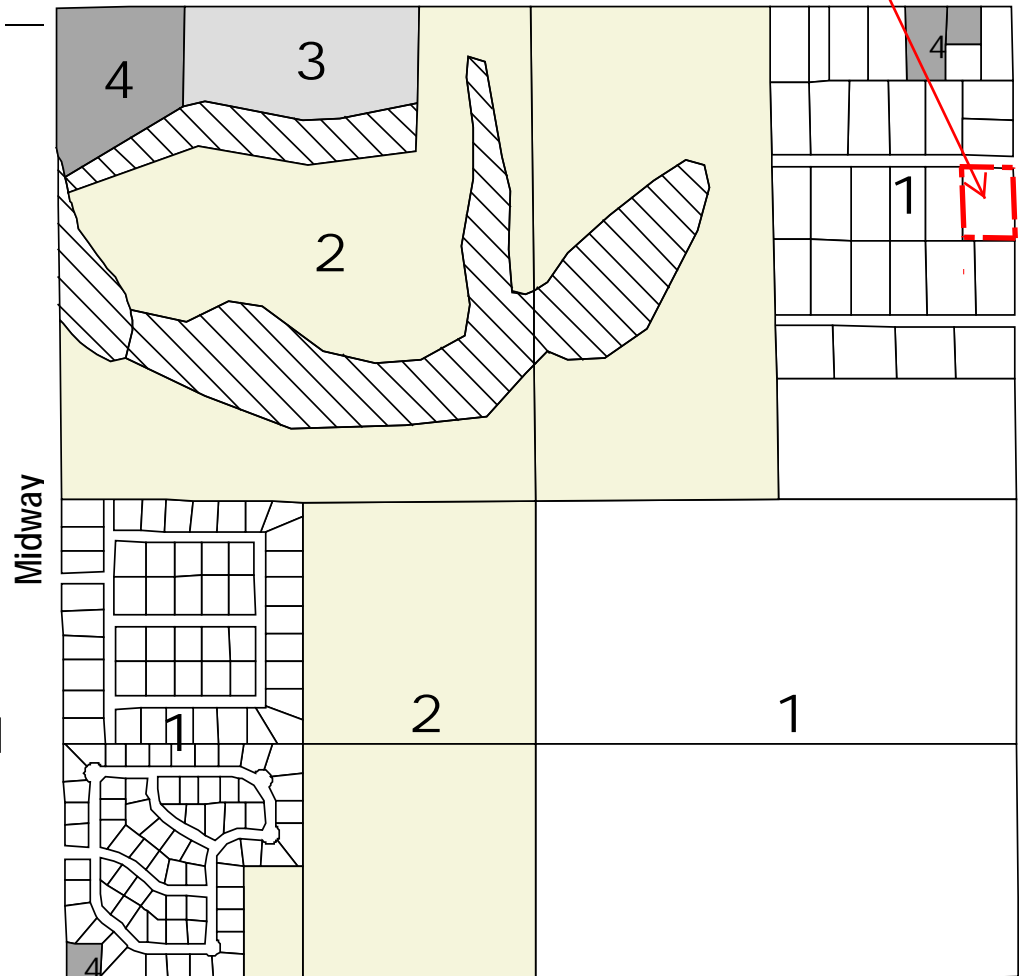
Kenosha/Oak Grove/Houston/Midway (Section 11-18-15)

Level 4 designations are given to tracts in the northwest corner based on existing zoning and the LUIS model. Level 4 designations are given to tracts in the northeast and southwest corners based on existing zoning and land uses. Level 3 designations are given to tracts in the northwest corner as a buffer to Level 4 areas in accordance with existing zoning and the LUIS model. Level 2 designations are given to tracts in the southwest quarter section east of the Oak Ridge Estate subdivision in anticipation that sewer service would be available at some point in the future. Level 1 designations are given to remaining tracts that are not part of the Forest Ridge PUD to reflect existing development in the northeast quarter section and in the southeast quarter section in anticipation that sewer service would not be available in the near or distant future to support more intense residential development.

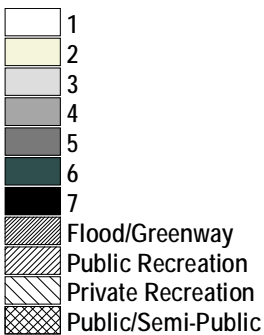
BAZ 1977

Kenosha

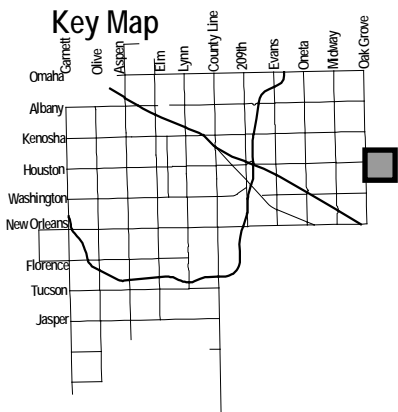
Oak Grove



LUIS Classification



Key Map



Houston