

Geographic Technologies Group

7815 S. Elm Place

JUN 05 2017

188 ft

OWNER
 BROWN STEELERS LIMITED CORP
 1000 N. 17TH E. AVE. # 74011
 OMAHA, NE 68114
 (414) 453-1858

PARKING DATA

EXISTING: 1800 SQ. FT.
 REQUIRED: 1800 SQ. FT.
 NO PARKING REQUIRED: 0 SQ. FT.
 NO PARKING REQUIRED: 0 SQ. FT.
 NO PARKING REQUIRED: 0 SQ. FT.
 NO PARKING REQUIRED: 0 SQ. FT.
 NO PARKING REQUIRED: 0 SQ. FT.
 NO PARKING REQUIRED: 0 SQ. FT.

SITE DATA

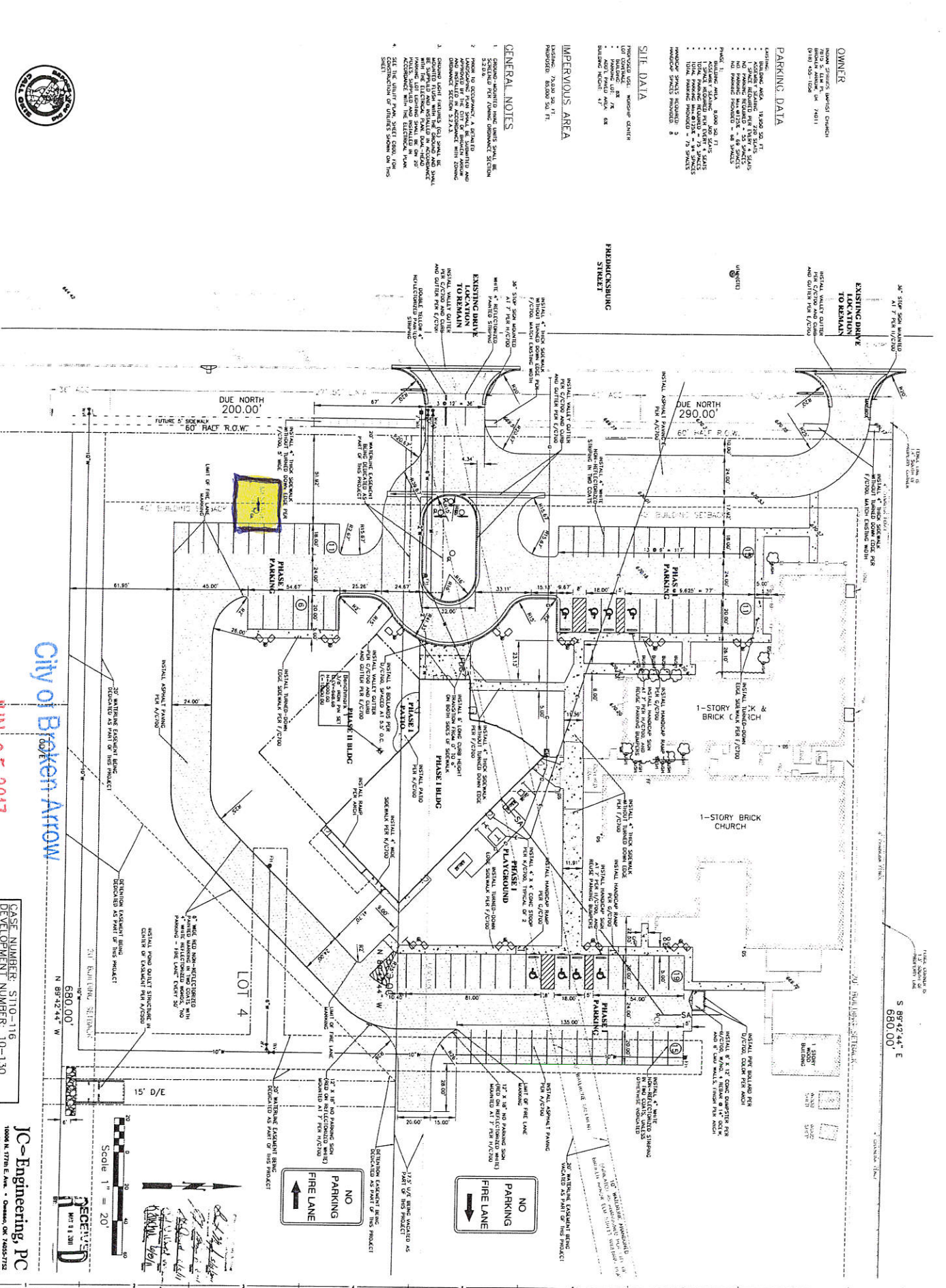
LOT 4
 680.00' x 680.00'
 100% CONSTRUCTION DOCUMENTS

IMPERVIOUS AREA

PERCENT: 5.0%

GENERAL NOTES

1. CONSTRUCTION SHALL BE IN ACCORDANCE WITH THE LATEST EDITION OF THE IBC AND ALL APPLICABLE CODES.
2. PROVIDE TO OCCUPANT, A SERIES OF CONSTRUCTION DOCUMENTS APPROVED BY THE CITY OF INDIAN SPRINGS, INCLUDING BUT NOT LIMITED TO, THE CONSTRUCTION SPECIFICATIONS AND GENERAL NOTES.
3. CONSTRUCTION SHALL BE IN ACCORDANCE WITH THE LATEST EDITION OF THE IBC AND ALL APPLICABLE CODES.
4. SET THE UTILITIES SHOWN ON THIS PLAN IN ACCORDANCE WITH THE CITY OF INDIAN SPRINGS.



City of Broken Arrow

JUN 05 2017

CASE NUMBER: S110-116
 DEVELOPMENT NUMBER: 10-130
 DEFINITION NUMBER: DD-101310-19

JC-Engineering, PC
 10000 N. 17TH E. AVE. • OMAHA, NE 68132-7172
 (414) 735-5211 • www.jc-engineering.com
 OMAHA OFFICE: 10000 N. 17TH E. AVE. SUITE 201 • OMAHA, NE 68132-7172

Scale 1" = 20'
 NORTH
 100% CONSTRUCTION DOCUMENTS
 S110-116
 10-130
 DD-101310-19

INDIAN SPRINGS BAPTIST CHURCH

7615 S. Elm Pl. Broken Arrow, OK 74011

100% CONSTRUCTION DOCUMENTS

SIE PLAN

C40

Arch