

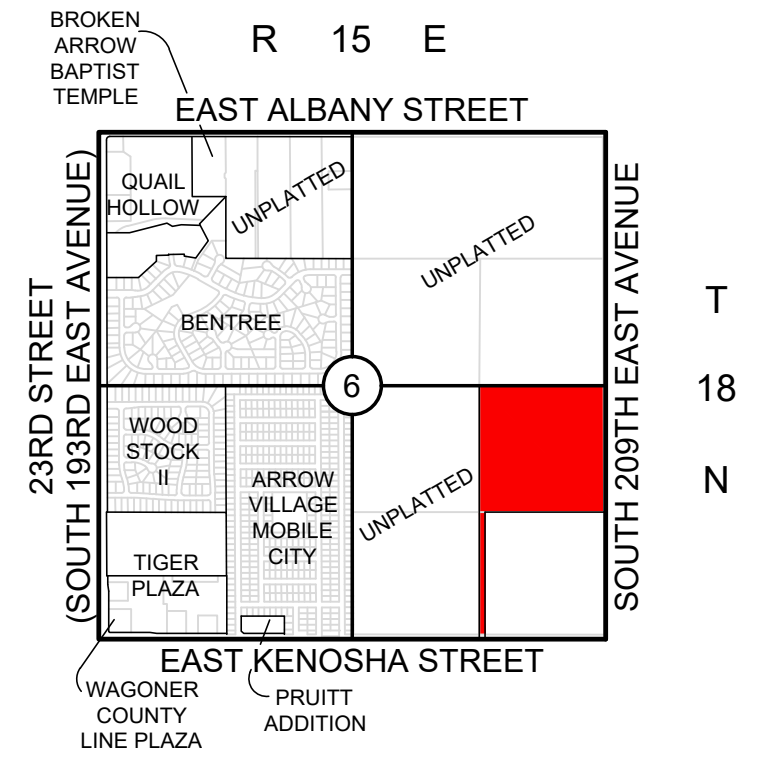
Backflow Preventer Valve Table				
BLOCK	LOTS	FINISH FLOOR ELEVATION	UPSTREAM MANHOLE	TOP OF RIM ELEVATION
1	1	711.00	5	666.50

* REQUIRES BACKFLOW PREVENTER VALVE.

IF THE ACTUAL FINISH FLOOR ELEVATION IS LOWER THAN ONE (1) FOOT ABOVE THE TOP OF RIM ELEVATION OF THE UPSTREAM MANHOLE, IT SHALL BE THE BUILDER'S RESPONSIBILITY TO INSTALL A BACKFLOW PREVENTER VALVE NEAR THE BUILDING ACCORDING

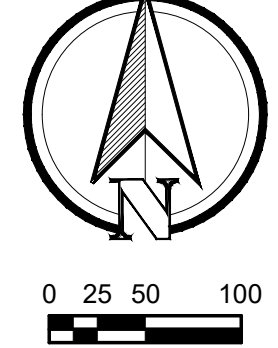
CONDITIONAL FINAL PLAT BAPS ES #15 & MS #6

A SUBDIVISION OF THE SOUTHEAST QUARTER (SE/4) OF SECTION SIX (6), TOWNSHIP EIGHTEEN (18) NORTH, RANGE FIFTEEN (15) EAST, OF THE INDIAN BASE AND MERIDIAN, WAGONER COUNTY, STATE OF OKLAHOMA, ACCORDING TO THE U.S. GOVERNMENT SURVEY THEREOF.



Location Map
SCALE: 1"=2000'

Subdivision Statistics
SUBDIVISION CONTAINS ONE (1) LOT IN ONE (1) BLOCK:
GROSS SUBDIVISION AREA:
1816272.76 SQ. FEET / 41.70 ACRES



Owner / Developer
BROKEN ARROW PUBLIC SCHOOLS
701 SOUTH MAIN
BROKEN ARROW, OK 74012
PHONE: (918) 259-7400
EMAIL: ratolomeo@baschools.org

Engineer
WALLACE ENGINEERING - STRUCTURAL CONSULTANTS, INC
200 EAST MATHEW BRADY STREET
TULSA, OKLAHOMA 74103
PHONE: (918) 584-5858
www.wallacesc.com
C.A. #1460 EXPIRES 6-30-2017

Surveyor
ATLAS LAND OFFICE, LLC
202 SOUTH MAIN STREET
WAGONER, OKLAHOMA 74467
PHONE: (918) 485-9987
EMAIL: info@atlaslandoffice.com
C.A. # 6752 EXPIRES: 6-30-2016

Monumentation
ALL CORNERS SHOWN HEREON WERE SET USING A 3/8" x 18" STEEL PIN WITH A PLASTIC CAP STAMPED "ATLAS 6752" AT ALL CORNERS.

Addresses
ADDRESS SHOWN ON THIS PLAT WERE ACCURATE AT THE TIME THIS PLAT WAS FILED. ADDRESSES ARE SUBJECT TO CHANGE AND SHOULD NEVER BE RELIED ON IN PLACE OF LEGAL DESCRIPTION.

Basis of Bearings
NON-ASTRONOMICAL GRID BEARINGS OF THE OKLAHOMA STATE PLANE COORDINATE SYSTEM - ZONE NORTH.

Benchmark
3" ALUMINUM CAP-FLUSH-SET IN CONCRETE-STAMPED "BA 37", SET N.W. OF 61ST ST. AND 193RD E. AVE.
ELEVATION = 698.373' (NAVD 1988)

Water and Sewer
SANITARY SEWER SERVICES WILL BE SUPPLIED AND MAINTAINED BY THE CITY OF BROKEN ARROW. WATER SERVICES WILL BE SUPPLIES AND MAINTAINED BY RURAL WATER DISTRICT #4.

Detention Determination
STORM WATER DETENTION WILL BE PROVIDED IN ACCORDANCE WITH DETENTION DETERMINATION # DD-22416-01

Line Table		
NO	DISTANCE	BEARING
L1	62.29'	N 43°45'48" E
L2	44.44'	S 68°52'04" E
L3	11.02'	S 21°07'56" W
L4	15.00'	N 68°52'04" W
L5	10.99'	S 21°07'56" W
L6	17.31'	S 68°53'40" E

APPROVED BY THE CITY COUNCIL OF THE CITY OF BROKEN ARROW, OKLAHOMA.
MAYOR: CRAIG THURMOND
ATTEST: CITY CLERK

COUNTY TREASURER STAMP

