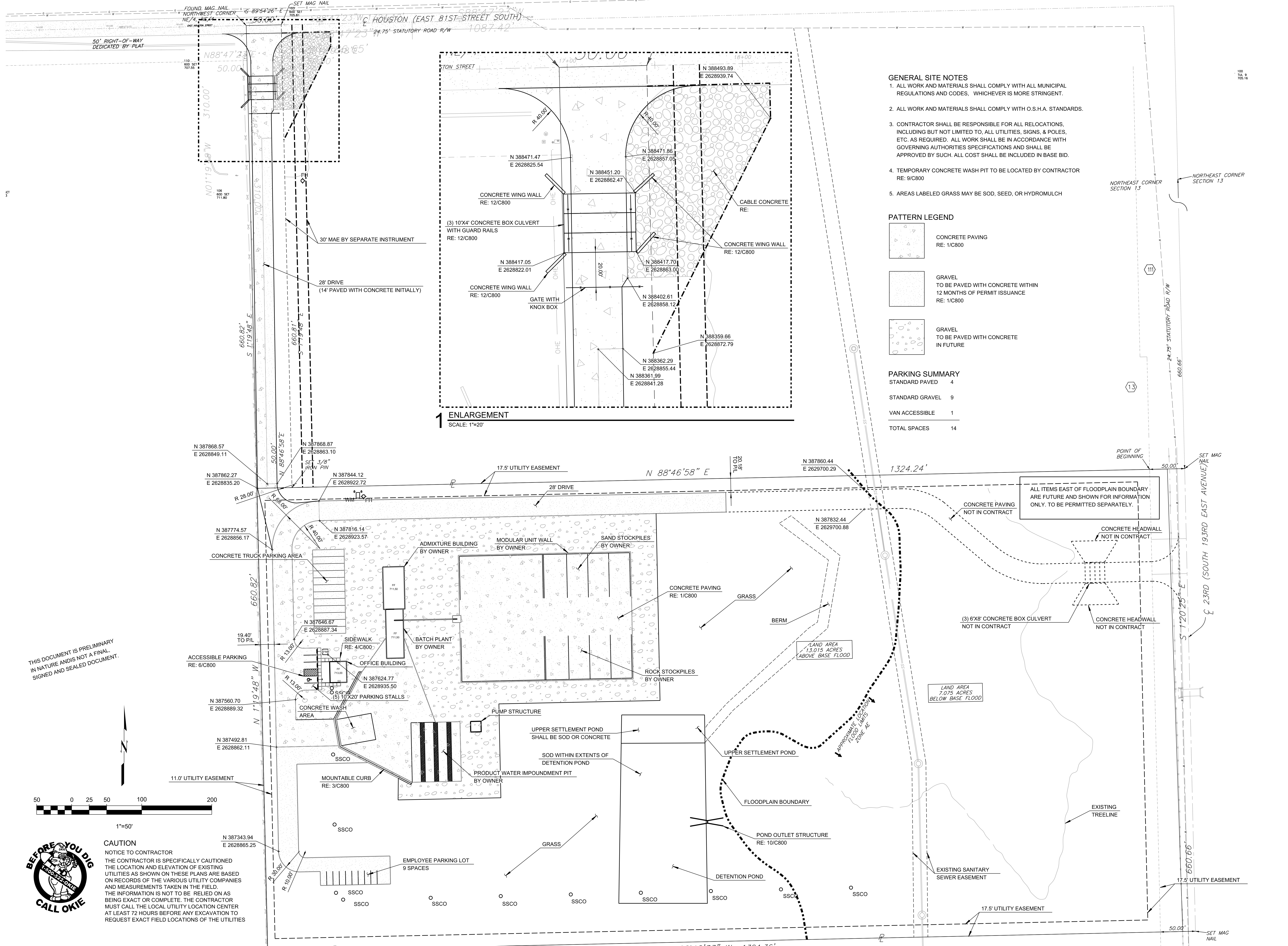


12/20/17 4:10:18 PM \\chris\server\projects\1640145\Twin Cities Ready Mix\Draw\Diagrams\DWG\C400Site.dwg



- GENERAL SITE NOTES**
1. ALL WORK AND MATERIALS SHALL COMPLY WITH ALL MUNICIPAL REGULATIONS AND CODES, WHICHEVER IS MORE STRINGENT.
  2. ALL WORK AND MATERIALS SHALL COMPLY WITH O.S.H.A. STANDARDS.
  3. CONTRACTOR SHALL BE RESPONSIBLE FOR ALL RELOCATIONS, INCLUDING BUT NOT LIMITED TO, ALL UTILITIES, SIGNS, & POLES, ETC. AS REQUIRED. ALL WORK SHALL BE IN ACCORDANCE WITH GOVERNING AUTHORITIES SPECIFICATIONS AND SHALL BE APPROVED BY SUCH. ALL COST SHALL BE INCLUDED IN BASE BID.
  4. TEMPORARY CONCRETE WASH PIT TO BE LOCATED BY CONTRACTOR RE: 9/C800
  5. AREAS LABELED GRASS MAY BE SOD, SEED, OR HYDROMULCH

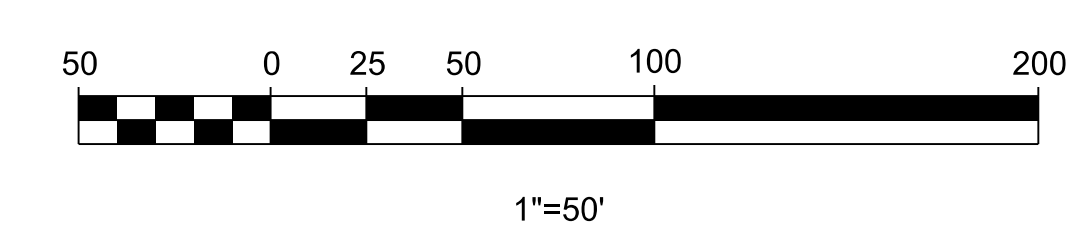
- PATTERN LEGEND**
- CONCRETE PAVING RE: 1/C800
  - GRAVEL TO BE PAVED WITH CONCRETE WITHIN 12 MONTHS OF PERMIT ISSUANCE RE: 1/C800
  - GRAVEL TO BE PAVED WITH CONCRETE IN FUTURE

**PARKING SUMMARY**

STANDARD PAVED	4
STANDARD GRAVEL	9
VAN ACCESSIBLE	1
<b>TOTAL SPACES</b>	<b>14</b>

**1 ENLARGEMENT**  
SCALE: 1"=20'

THIS DOCUMENT IS PRELIMINARY IN NATURE AND IS NOT A FINAL, SIGNED AND SEALED DOCUMENT.



**CAUTION**  
NOTICE TO CONTRACTOR  
THE CONTRACTOR IS SPECIFICALLY CAUTIONED THE LOCATION AND ELEVATION OF EXISTING UTILITIES AS SHOWN ON THESE PLANS ARE BASED ON RECORDS OF THE VARIOUS UTILITY COMPANIES AND MEASUREMENTS TAKEN IN THE FIELD. THE INFORMATION IS NOT TO BE RELIED ON AS BEING EXACT OR COMPLETE. THE CONTRACTOR MUST CALL THE LOCAL UTILITY LOCATION CENTER AT LEAST 72 HOURS BEFORE ANY EXCAVATION TO REQUEST EXACT FIELD LOCATIONS OF THE UTILITIES

**Conceptual Engineering**

TWIN CITIES READY MIX PLANT  
PHASE 2  
2101 EAST HOUSTON STREET  
BROKEN ARROW, OK 74012

ISSUED  
ISSUE LOG

#	DATE	DESCRIPTION

JOB #: 1640145.01  
DWN. BY: HCW CHK. BY: JDB

**SITE PLAN**

SHEET NO.

**C400**

