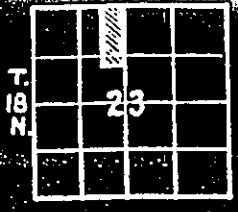


ARROW ACRES

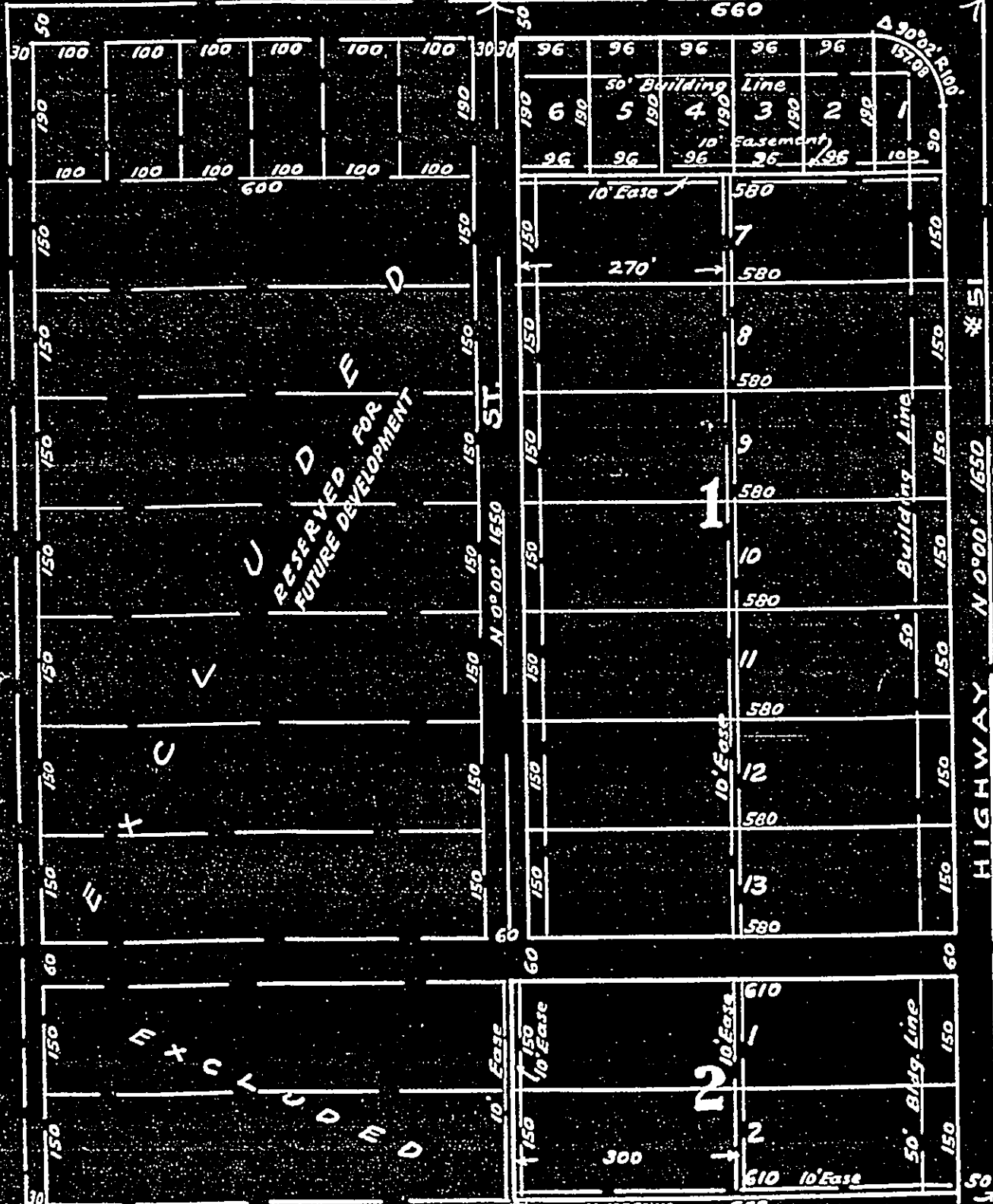
AN ADDITION IN TULSA COUNTY

SCALE 1" = 200'

LOCATION MAP



UNPLATTED
91 ST. S 89° 58' W. ST. 660



PHONE 62557

UNPLATTED - N 89° 58' W. 660
PLAT BOOK, CITY OF TULSA & VICINITY
COMPILED BY A. T. THORNE, ARCHITECT

PLAT NO. 1782, FILED 1/19/53
RECORD NO. 127,079