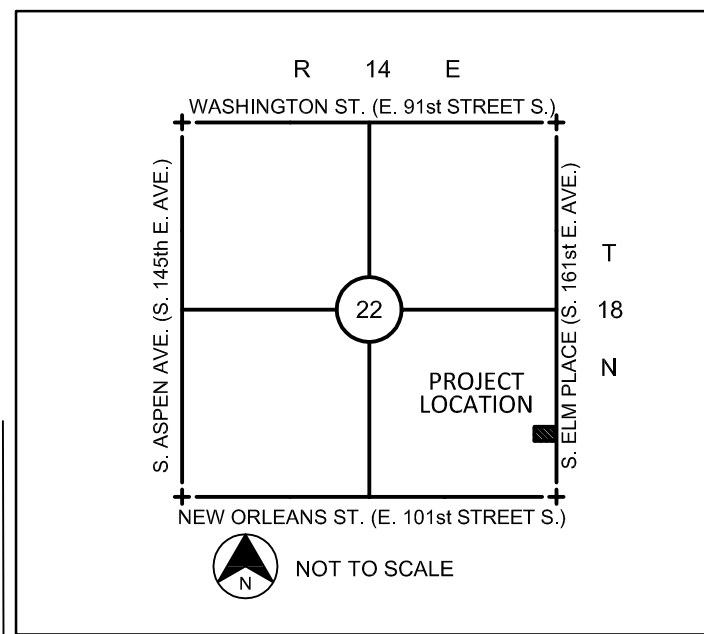
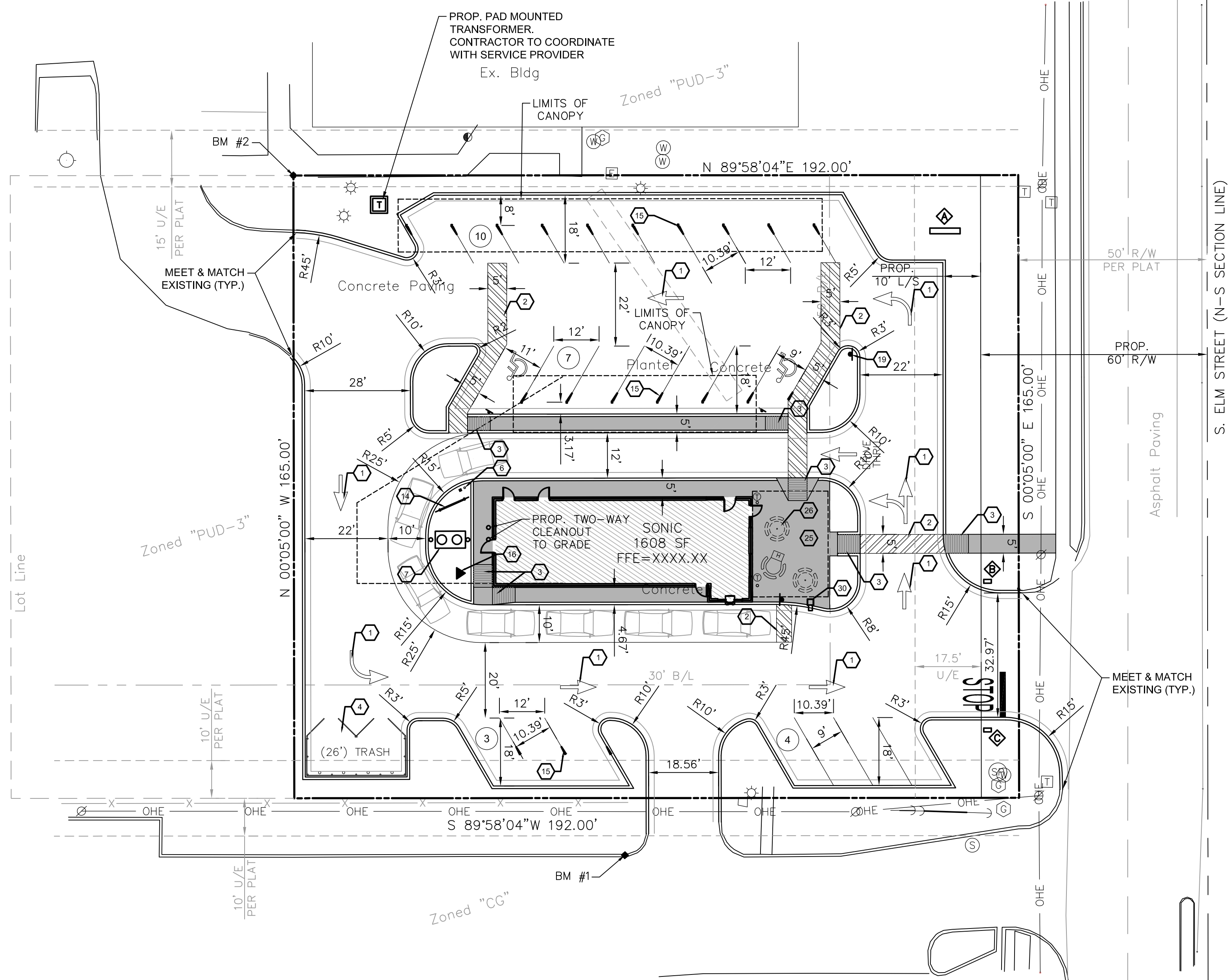
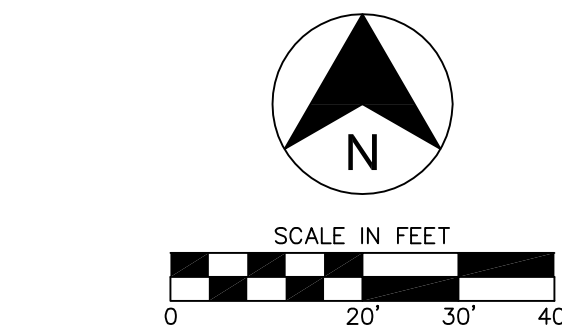


NOTE: ONSITE AREA DISTURBED APPROXIMATELY .73 ACRES (31,679.99 S.F.)

NOTE: REFER TO ARCHITECTURAL PLANS FOR COORDINATION OF BUILDING, APPURTENANCES, DIMENSIONS, AND UTILITY ENTRANCE LOCATIONS.



VICINITY MAP



Benchmark #1
Cut "X" on top of curb
Northing=49819.906
Easting=50087.812
Elevation=731.533

Benchmark #2
Cut "X" in sidewalk
NW property corner
Northing=50000.000
Easting=50000.000
Elevation=728.955

GENERAL NOTES:

- ALL DIMENSIONS AT CURBS ARE TO FACE OF CURB UNLESS OTHERWISE NOTED.
- PROPOSED UTILITIES ARE SHOWN IN SCHEMATIC ONLY. EXACT LOCATIONS SHALL BE DETERMINED TO ALLOW FOR THE MOST ECONOMICAL AND PRACTICAL INSTALLATION.
- THE CONTRACTOR SHALL COORDINATE WITH ALL UTILITY COMPANIES TO DETERMINE EXACT POINT OF SERVICE CONNECTION AT EXISTING UTILITY. REFER TO THE BUILDING ELECTRICAL AND PLUMBING DRAWINGS FOR UTILITY SERVICE ENTRANCE LOCATIONS, SIZES AND CIRCUITING.
- LOCATIONS OF PYLON / MONUMENT SIGNS AND ENTER / EXIT SIGNS ARE NOT EXACT. THE CONTRACTOR SHALL VERIFY EXACT LOCATIONS WITH OWNER / CONSTRUCTION MANAGER.
- ALL LANDSCAPE AREAS SHALL BE ROUGH GRADED TO 6" BELOW TOP OF ALL WALKS AND CURBS. TOP SOIL TO BE ADDED TO THE LEVEL OF WALKS OR CURBS.
- THE CONTRACTOR SHALL NOT DISTURB ANY ADJACENT PROPERTIES.

SITE PLAN KEYNOTES

ITEM	NOTE
1	TRAFFIC FLOW ARROW (TYPICAL), REF: CIVIL DETAILS
2	4" PAINTED STRIPES (TYPICAL), REF: SPECIFICATIONS, SECTION 02500, SHEET SP1
3	CURB RAMP (TYPICAL), REF: CIVIL DETAILS
4	TRASH ENCLOSURE, REF: ARCH DETAILS
5	RAILING, REF: CIVIL DETAILS
6	BOLLARD, REF: CIVIL DETAILS
7	GREASE TRAP, REF: PLUMBING PLANS
8	4" SANITARY SEWER LINE
9	2" UNDERGROUND GAS LINE
10	1" UNDERGROUND WATER LINE UTILIZING EXISTING METER
11	UNDERGROUND ELECTRIC LINE
12	2" UNDERGROUND TELEPHONE LINE
13	4" PVC PIPE SLEEVE UNDER DRIVE FOR IRRIGATION SYSTEM
14	ORDER BOARD AND DETECTOR LOOP, REF: CIVIL DETAILS
15	MENU / CANOPY POST (TYPICAL), REF: ARCH PLANS
16	GAS METER
17	CONCRETE PAVING
18	8" THICK, CONCRETE PAVING IN THIS AREA
19	"CARHOP CROSSING" SIGNAGE, REF: CIVIL DETAILS
20	"PICK UP ORDER HERE" SIGNAGE, REF: CIVIL DETAILS
21	- NOT USED -
22	POLE MOUNTED FLOOD LIGHTS, REF: CIVIL DETAILS AND FIXTURE SCHED. ON ELECTRICAL AND LIGHTING PLANS
23	NOT USED
24	CONC. CURB & GUTTER, REF: DETAILS ON CIVIL SHEETS
25	CONC. WALKS AND PATIO REF: CIVIL DETAILS
26	LOOSE TABLES & CHAIRS. REF: CIVIL DETAILS
27	3/4" YARD HYDRANT OFF IRRIGATION LINE, SUPPLIED AND INSTALLED BY PLUMBING CONTRACTOR.
28	FLOWER POTS PROVIDED BY SONIC.
29	- NOT USED -
30	TRASH CANS ON 1'-6"x1'-6" CONCRETE PAD

SIGN SCHEDULE

ITEM	QTY.	REFERENCE	SIGN TYPE
1	1	SIGN PLAN	MONUMENT SIGN (SEE SIGN PLAN)
2	1	SIGN PLAN	ENTER SIGN (SEE SIGN PLAN)
3	1	SIGN PLAN	EXIT SIGN (SEE SIGN PLAN)
4	1	SIGN PLAN	SIGN ON BLDG. (SEE SIGN PLAN)
5	2	SIGN PLAN	HANDICAPPED PARKING SIGN
6	0	SIGN PLAN	VAN ACCESSIBLE HANDICAPPED SIGN

LEGEND

	FIRE HYDRANT		EX. POWER POLE
	WATER VALVE		PROP. POWER POLE
	EX. WATER METER PIT		EX. TELEPHONE PED.
	EX. WATER METER		EX. SS MANHOLE
	PROP. WATER METER		PROP. SS MANHOLE
	EX. ELECTRICAL PED.		EX. GAS METER
	EX. ELECT. TRANSFORMER		PROP. GAS METER
	EX. ELECT. METER		EX. ELECT. MANHOLE
	PROP. TRANSFORMER		EX. ELECT. MANHOLE
	EX. SIGNAGE		EX. STORM MANHOLE
	EX. LIGHT POLE		VERTICAL SEPARATION REQUIREMENT
	PROP. LIGHT POLE		

LEGAL DESCRIPTION

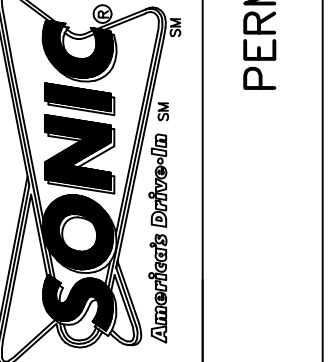


NO	DATE	REVISIONS

NO	DATE	REVISIONS

CEDAR CREEK
ENGINEERING - PLANNING - CONSULTING
P.O. Box 14534 Oklahoma City, OK 73113
in@cedarcreekinc.com
Phone: 405-406-2372
Fax: 405-406-2372
OK CA 5884
Exp. 05/05/18

SONIC CORPORATION
300 JOHNNY BENCH DRIVE
OKLAHOMA CITY, OK 73104
OFFICES: 405-225-5000
Customer: 1-800-226-4626, 9:00am-5:00pm CST



SONIC DRIVE-IN
SONIC TYPE: 12X
3208 S. ELM PLACE
BROKEN ARROW, OK
SITE PLAN

SHEET
C2.0
DWG: 16029
DATE: 05.16.16