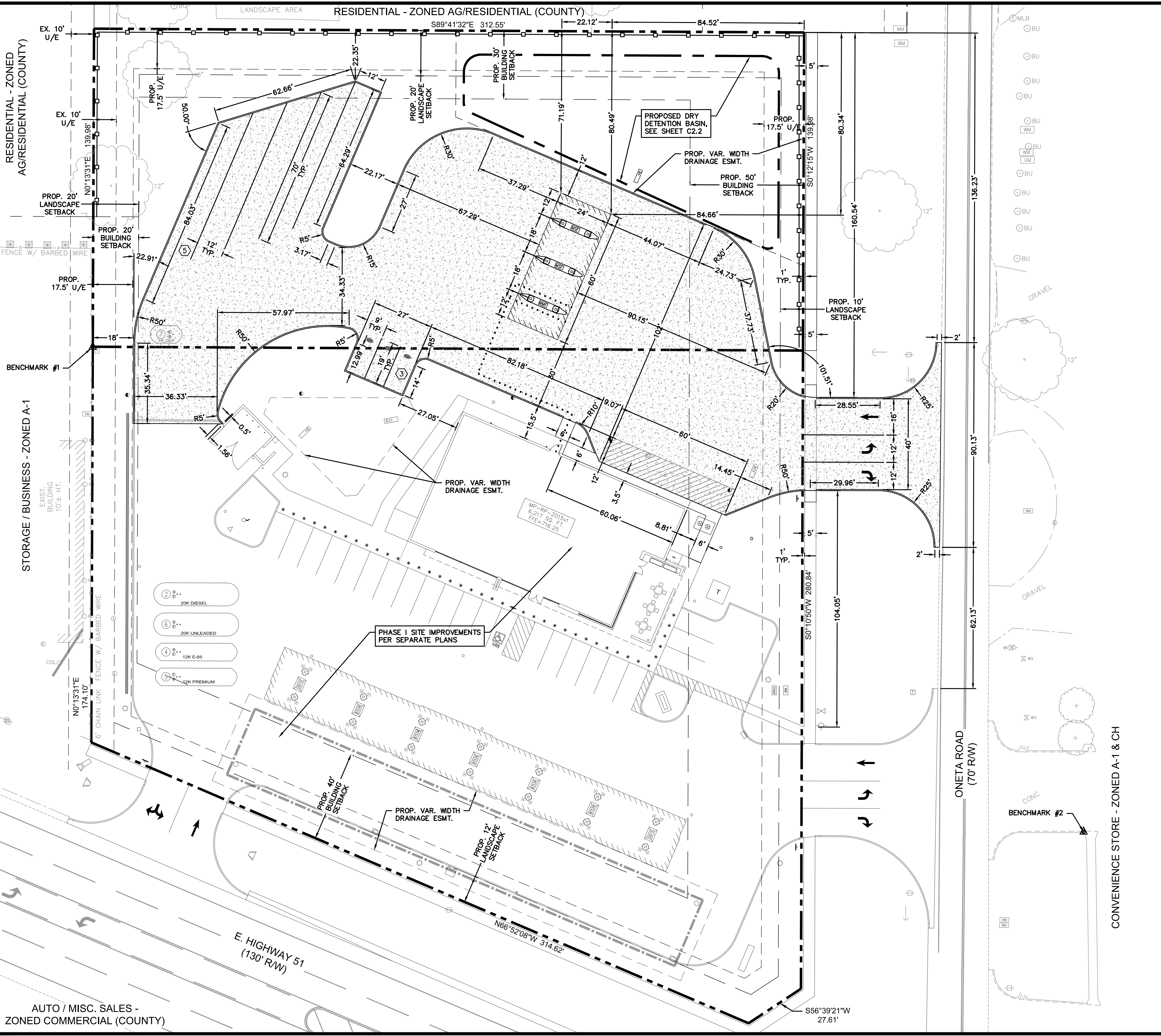


DWG: F:\PROJECTS\015-1926\40-Design\AutoCAD\Final Plans\Sheets PHZ 2\C_SIT_51926.dwg
 DATE: Jun 23, 2016 3:15pm
 USER: mchodwick
 C:\PBASE-PHZ 2_51926
 C:\PBASE-FIN_51926
 C:\PBASE-PHZ 2_51926
 C:\PBASE-FIN_51926

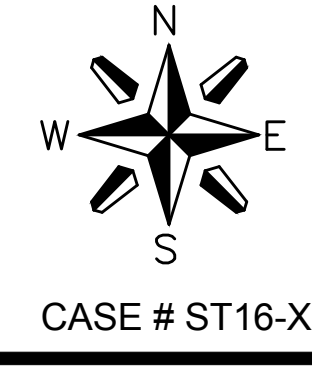


BENCHMARKS:
 BENCHMARK #1
 3/8" IRON PIN WITH CAP STAMPED
 'SACK' FOUND AT NORTHWEST
 CORNER OF LOT 1 BLOCK 1, BOL
 ADDITION
 ELEV.=712.02 (NAVD 1988)
 BENCHMARK #2 (TEMPORARY)
 SQUARE CUT IN SOUTH CURB LINE
 ADJACENT TO SIDEWALK OF NORTH
 DRIVE ENTRANCE INTO EXIST. KUM
 & GO APPROX. 210 FEET NORTH OF
 THE HIGHWAY 51 & ONETA RD.
 INTERSECTION
 ELEV.=713.55 (NAVD 1988)

NOTE:
 PROPERTY BOUNDARY LABELS
 AND INFORMATION IS SHOWN
 FOR REFERENCE ONLY

LEGEND

- PROPOSED BOUNDARY
- SETBACK LINE
- EXISTING EASEMENT LINE
- PROPOSED DRY DETENTION BASIN
- LIMITS OF UNDERGROUND DETENTION SYSTEM
- PROPOSED INTEGRAL CONCRETE CURB
- ADA ACCESSIBLE ROUTE
- PROPOSED BUILDING
- PROPOSED HEAVY DUTY CONCRETE PAVEMENT
- PROPOSED BOLLARD
- PROPOSED SANITARY SEWER CLEANOUT
- PROPOSED SAMPLING MANHOLE
- PROPOSED GREASE INTERCEPTOR
- PROPOSED WATER METER
- PROPOSED IRRIGATION METER
- PROPOSED PUBLIC FIRE HYDRANT
- PROPOSED STORM SEWER CLEANOUT
- PROPOSED FLARED END SECTION
- PROPOSED STORM SEWER STRUCTURE
- PROPOSED UNDERGROUND DETENTION INSPECTION PORT
- PROPOSED STORM SEWER STRUCTURE
- PROPOSED TELEPHONE PEDESTAL
- PROPOSED TRANSFORMER
- PARKING STALL COUNT PER BAY
- BENCHMARK
- EXIST. SIGN
- EXIST. MAILBOX
- EXIST. DECIDUOUS TREE
- EXIST. TELEPHONE PEDESTAL
- EXIST. GAS METER
- EXIST. GUY WIRE
- EXIST. POWER POLE
- EXIST. SANITARY SEWER LAMPHOLE
- EXIST. SANITARY SEWER MANHOLE
- EXIST. SEWER CLEANOUT
- EXIST. ROOF DRAIN
- EXIST. FIBER OPTIC POST
- EXIST. ELECTRIC PEDESTAL
- EXIST. TRANSFORMER
- EXIST. TRAFFIC SIGNAL MANHOLE
- EXIST. TRAFFIC SIGNAL WITH ARM
- EXIST. FIRE HYDRANT
- EXIST. WATER METER
- EXIST. WATER VALVE
- EXIST. EDGE OF ASPHALT
- EXIST. CONCRETE CURB
- EXIST. EDGE OF GRAVEL
- EXIST. CHAINLINK FENCE W/ BARBED WIRE
- EXIST. WOOD FENCE
- EXIST. CHAINLINK FENCE
- EXIST. SPLIT RAIL FENCE
- PROPOSED WOOD FENCE



6400 Westown Parkway
 West Des Moines, Iowa
 50266
 P: 515-226-0128
 F: 515-223-9873

#837 PHASE II - BROKEN ARROW, OK
 24055 E. HIGHWAY 51
SITE PLAN

KG PROJECT TEAM:
 RDR: KXW
 SDM: RRF
 CPM: SDN

REVISION DESCRIPTION	DATE	REVISIONS

DATE: XX-XX-16
 SHEET NUMBER: C1.1
 3 OF XX