

OWNER
 MEMORIAL DRIVE, L.L.C.
 2219 E. SKELLY DRIVE
 TULSA, OKLAHOMA 74105
 PHONE: (918) 749-1636

COUNTY LINE CENTER

GOVERNMENT LOT 4 OF SECTION 31, TOWNSHIP 19 NORTH,
 RANGE 15 EAST, COUNTY OF WAGONER, OKLAHOMA

FILE DATE: 08/20/2001 FILE TIME: 04:03
 WAGONER COUNTY, JERRY FIELDS - COUNTY CLERK BOOK: PLCK PAGE: 304
 RECEP: 200110544 **

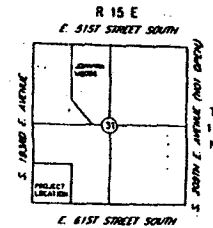
AMERICAN SOUTHWEST PROPERTIES, INC.

1700 W. ALBANY
 BROKEN ARROW, OKLAHOMA 74012
 PHONE: (918) 251-2858

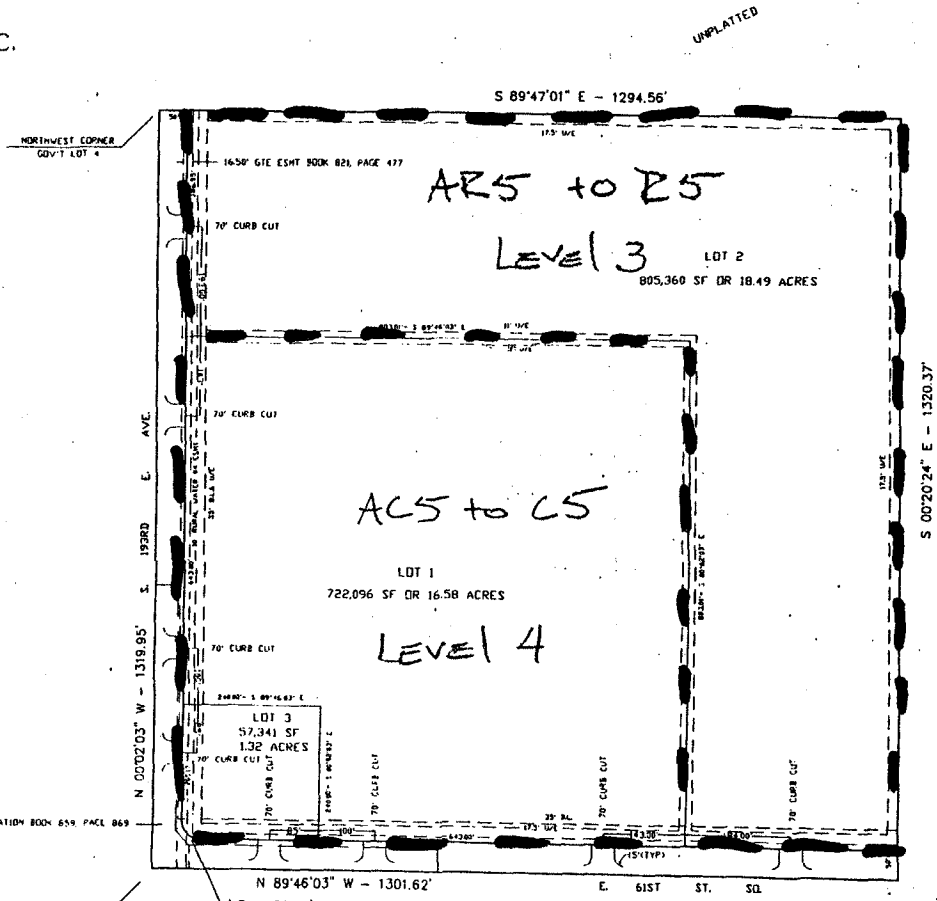
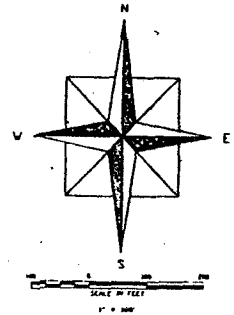
ENGINEER/SURVEYOR

TUTTLE & ASSOCIATES, INC.

9718 E. 55TH PL.
 TULSA, OKLAHOMA 74146
 PHONE: (918) 663-5567
 CERTIFICATE OF AUTHORITY CA 465
 EXPIRATION 6-30-03



LOCATION MAP
 1,713,629 SQUARE FEET
 39.34 ACRES
 3 LOTS



WAGONER COUNTY TREASURER

Jerry Fields TREASURER FOR THE COUNTY OF WAGONER,
 STATE OF OKLAHOMA, DO HEREBY STATE THAT ALL BACK TAXES HAVE
 BEEN PAID ON THE DESCRIBED PROPERTY.

DATE August 20 2001

Jerry Fields
 WAGONER COUNTY TREASURER

ACCEPTANCE OF PLAT

BE IT RESOLVED BY THE WAGONER METROPOLITAN AREA PLANNING
 COMMISSION OF WAGONER COUNTY, STATE OF OKLAHOMA, THAT THE
 ABOVE SHOWN IS ACCEPTED AND ADDED BY THE WAGONER
 METROPOLITAN AREA PLANNING COMMISSION

APPROVED BY THE CHAIRMAN OF THE WAGONER METROPOLITAN
 AREA PLANNING COMMISSION OF WAGONER COUNTY, STATE OF OKLAHOMA

DATE 8-20-01

Bruce Halton
 WAGONER METROPOLITAN
 AREA PLANNING COMMISSION

WAGONER COUNTY COMMISSION

BE IT RESOLVED BY THE WAGONER COUNTY BOARD OF COUNTY
 COMMISSIONERS WAGONER COUNTY, STATE OF OKLAHOMA, THAT THE
 ABOVE SHOWN PLAT IS APPROVED

APPROVED BY THE WAGONER COUNTY BOARD OF COMMISSIONERS
 WAGONER COUNTY, STATE OF OKLAHOMA

DATE 8-20-01

Bill Halton
 CHAIRMAN, WAGONER COUNTY
 BOARD OF COUNTY COMMISSIONERS

DEPARTMENT OF ENVIRONMENTAL QUALITY

THIS DEPARTMENT OF ENVIRONMENTAL QUALITY HAS APPROVED THIS PLAT
 FOR THE USE OF A PUBLIC WATER SYSTEM AND AN
 SEWER SYSTEM

DATE 8-20-01

Chris Keller
 CHRIS KELLER
 ENVIRONMENTAL PROGRAM MANAGER
 OKLAHOMA DEPARTMENT OF ENVIRONMENTAL QUALITY



SOUTHWEST CORNER
 SECTION 31, T19N, R15E
 POINT OF BEGINNING

R = 35.00'
 L = 54.81'
 Δ = 89°40'00"

THERE ARE NO PUBLIC WATER SUPPLY SOURCES WITHIN 300 FEET OF THIS DEVELOPMENT.
 BASIS FOR BEARINGS - SOUTH SECTION LINE ASSUMED N 89°46'03" W
 THE WATER EASEMENT IN BOOK 358, PAGE 315 AFFECTS THIS PROPERTY.

- LEGEND
- N NORTH
 - S SOUTH
 - E EAST
 - W WEST
 - B.L. BUILDING LINE
 - U/E UTILITY EASEMENT
 - R.W. #4 ESMT WAGONER COUNTY RURAL WATER #4 RESTRICTED WATER EASEMENT

CERTIFIED TRUE COPY
 JERRY FIELDS
 COUNTY CLERK