



1225 NORTH LANSING AVENUE
TULSA, OKLAHOMA 74106
PH: 918.587.7171
FAX: 918.587.7176
WEB: CNFSIGNS.COM

APPROVED AS SHOWN APPROVED AS NOTED

X
CLIENT NAME _____ DATE _____

HEREBY GIVE MY APPROVAL TO PROCEED WITH FABRICATION OF THE SIGNAGE DEPICTED IN THESE DRAWINGS IN ORDER TO MEET THE PROJECT DEADLINE IN A TIMELY FASHION. I UNDERSTAND THAT ANY CHANGES (ADDITIONS, DELETIONS, OR MODIFICATIONS) TO THE FUNDAMENTAL STRUCTURE, UNDERLYING DESIGN, OR THE SPECIFIC FEATURES OF THE SIGNAGE MAY RESULT IN SLIPPAGE OF THE COMPLETION DATE, ADDITIONAL RESOURCE REQUIREMENTS OR ADDITIONAL COST.



Store #5396
Address: 3001 N Aspen Ave
Broken Arrow Oklahoma



ACCOUNT EXEC:
Pete Webb

DESIGNER:
W.R.S.

DATE OF ORIGINAL DWG:
8/19/24

REVISION HISTORY:

SIGN TYPE/DESCRIPTION:
Site Map
Map is NOT TO SCALE

APPROVED AS SHOWN APPROVED AS NOTED

X
CLIENT NAME _____ DATE _____

HEREBY GIVE MY APPROVAL TO PROCEED WITH FABRICATION OF THE SIGNAGE DEPICTED IN THESE DRAWINGS IN ORDER TO MEET THE PROJECT DEADLINE IN A TIMELY FASHION. I UNDERSTAND THAT ANY CHANGES (ADDITIONS, DELETIONS, OR MODIFICATIONS) TO THE FUNDAMENTAL STRUCTURE, UNDERLYING DESIGN, OR THE SPECIFIC FEATURES OF THE SIGNAGE MAY RESULT IN SLIPPAGE OF THE COMPLETION DATE, ADDITIONAL RESOURCE REQUIREMENTS OR ADDITIONAL COST.



ACCOUNT EXEC:
Pete Webb

DESIGNER:
W.R.S.

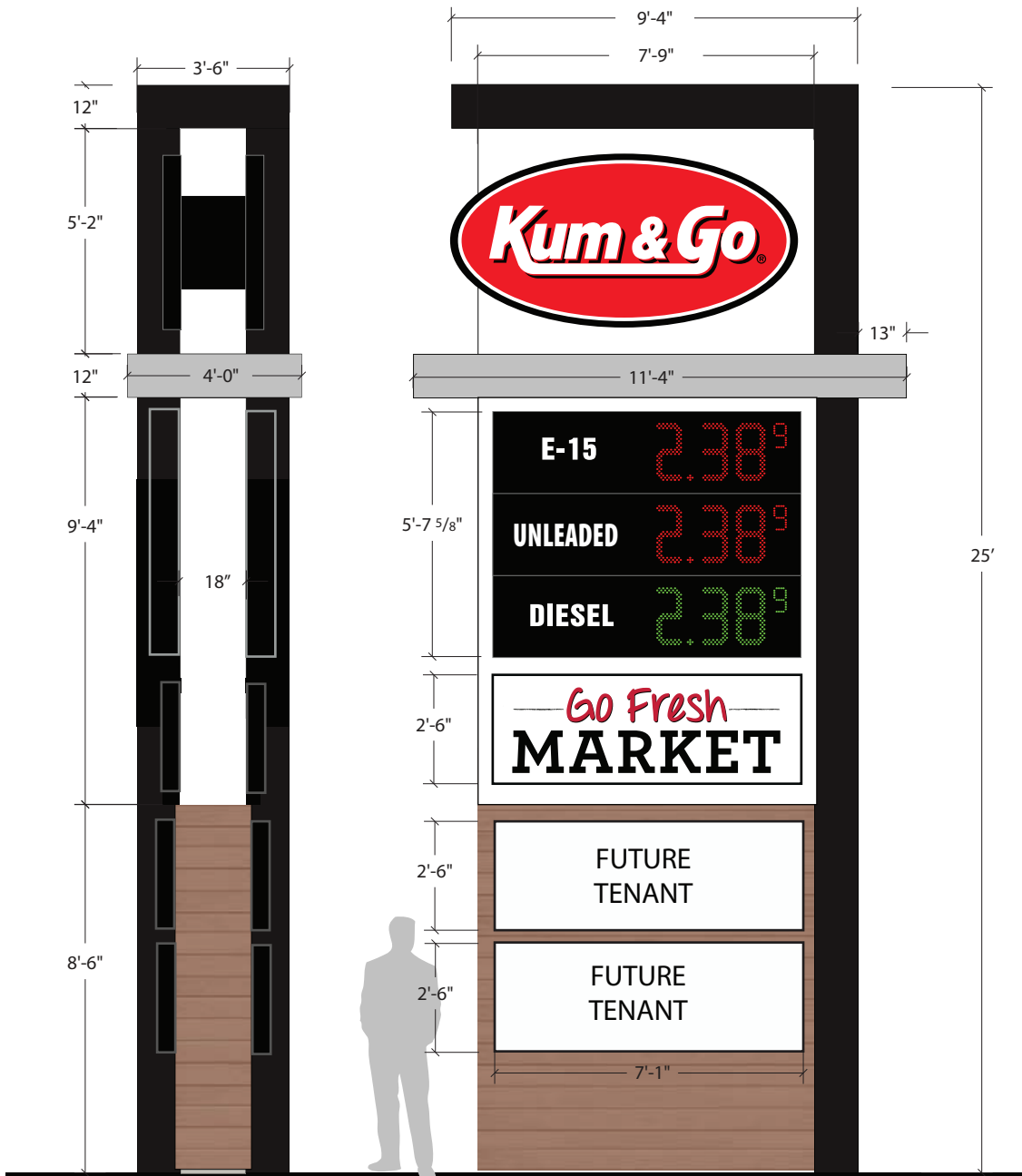
DATE OF ORIGINAL DWG:
8/19/24

REVISION HISTORY:
11/15/24

SIGN TYPE/DESCRIPTION:
25' Monument



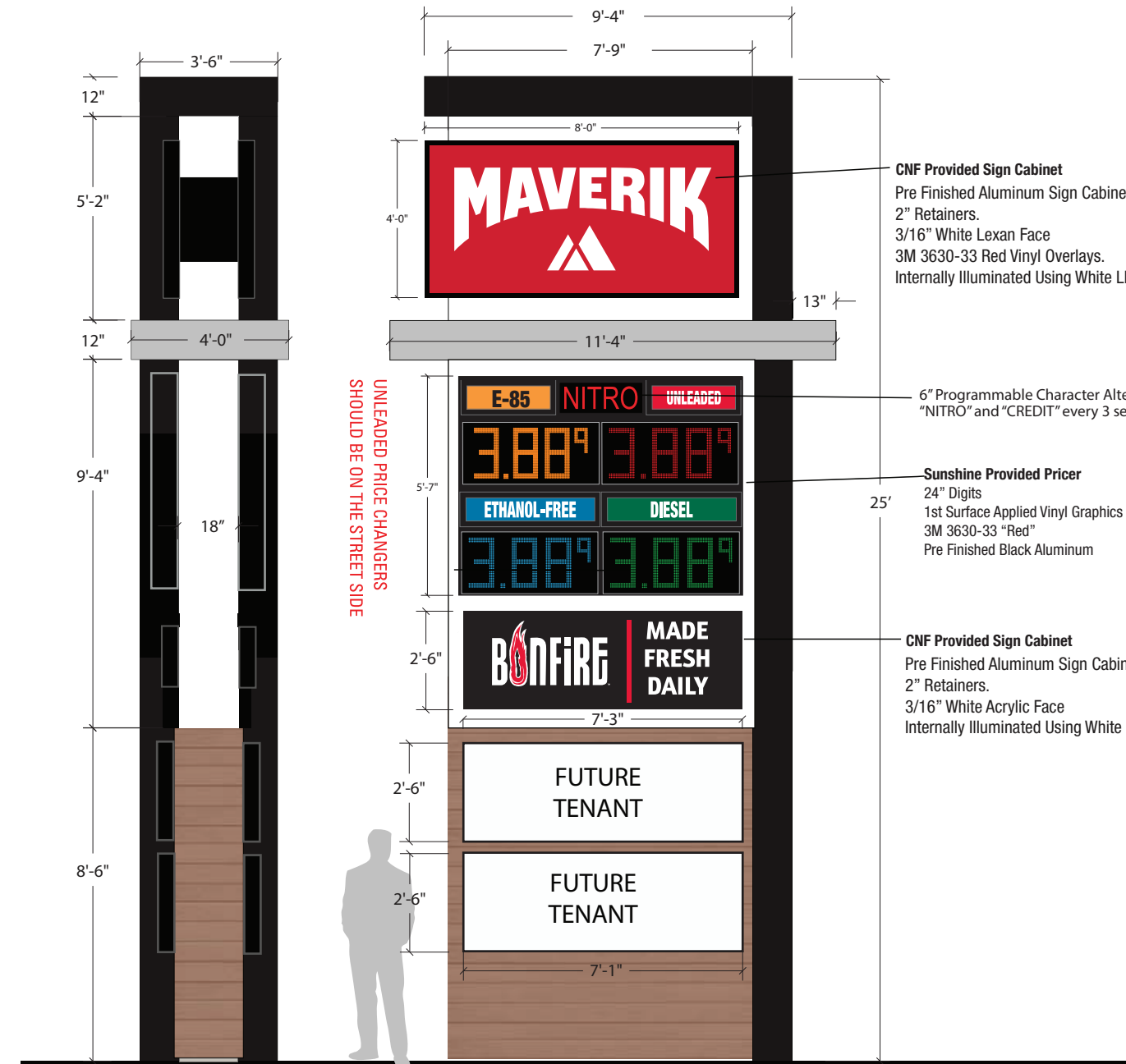
SHEET NAME: **ST-1.0**



SIGN 1

Existing Scale:
1/4" - 1'

Existing Kum & Go Signage = 90.15 sq. ft.
with 35.4 square feet of Future Tenant Signage.



SIGN 1

Proposed Scale:
1/4" - 1'

Proposed Maverik Signage = 90.15 sq. ft.
with 35.4 square feet of Future Tenant Signage.

CNF Provided Sign Cabinet
Pre Finished Aluminum Sign Cabinet with 2" Retainers.
3/16" White Lexan Face
3M 3630-33 Red Vinyl Overlays.
Internally Illuminated Using White LEDs.

6" Programmable Character Alternates "NITRO" and "CREDIT" every 3 seconds

Sunshine Provided Pricer
24" Digits
1st Surface Applied Vinyl Graphics
3M 3630-33 "Red"
Pre Finished Black Aluminum

CNF Provided Sign Cabinet
Pre Finished Aluminum Sign Cabinet with 2" Retainers.
3/16" White Acrylic Face
Internally Illuminated Using White LEDs.

UNLEADED PRICE CHANGERS SHOULD BE ON THE STREET SIDE



1225 NORTH LANSING AVENUE
TULSA, OKLAHOMA 74106
PH: 918.587.7171
FAX: 918.587.7176
WEB: CNFSIGNS.COM

APPROVED AS SHOWN APPROVED AS NOTED

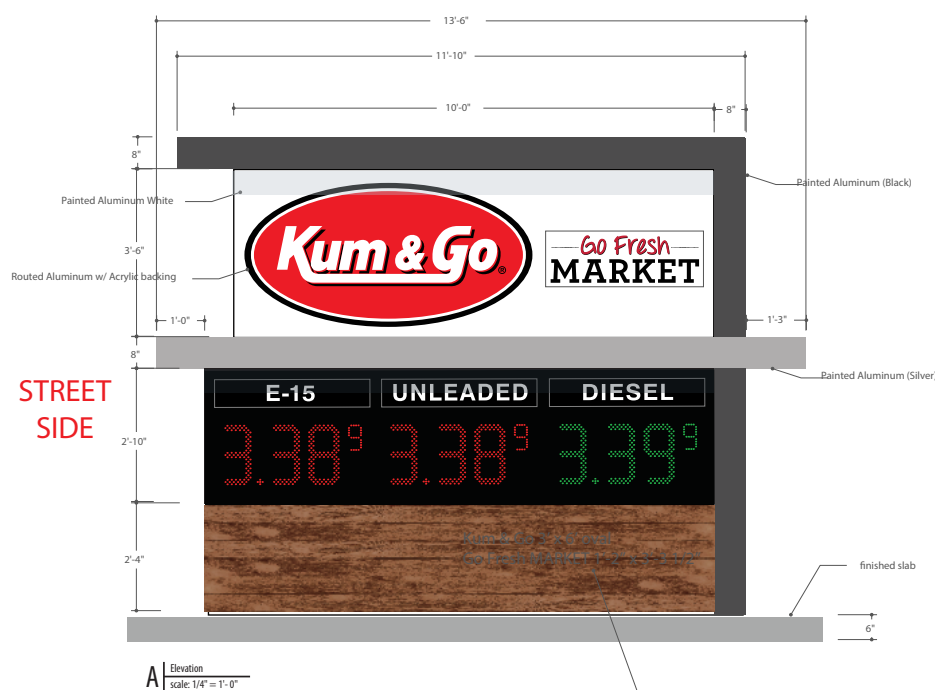
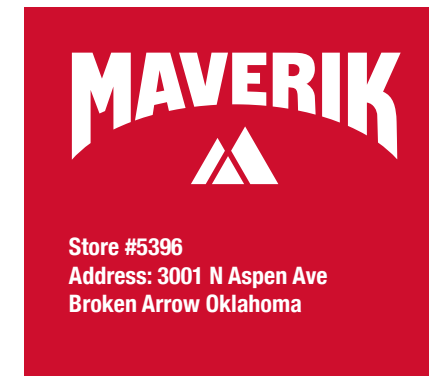
X
CLIENT NAME _____ DATE _____

I HEREBY GIVE MY APPROVAL TO PROCEED WITH FABRICATION OF THE SIGNAGE DEPICTED IN THESE DRAWINGS IN ORDER TO MEET THE PROJECT DEADLINE IN A TIMELY FASHION, UNDERSTANDING THAT ANY CHANGES (ADDITIONS, DELETIONS, OR MODIFICATIONS) TO THE FUNDAMENTAL STRUCTURE, UNDERLYING DESIGN, OR THE SPECIFIC FEATURES OF THIS SIGNAGE MAY RESULT IN SLIPPAGE OF THE COMPLETION DATE, ADDITIONAL RESOURCE REQUIREMENTS OR ADDITIONAL COST.

D/F HIGH-RISE POLE SIGN - HORIZONTAL

Maverik Cabinet	Aluminum
Paint / Color	SW Std. Black
Face Material / Color	Polycarbonate White
Face Graphics	3M Vinyl: 3630-33 "Red"
Internal Lighting	White L.E.D.
Optimal Viewing Distance	1200 ft
Pipe Support / Size	TBD by Engineer
Paint / Color	SW Std. Black
Approx. Footing Size	20' x 20' x 6'
Electrical Requirements	30 Amp - 110 Volt
Power Draw	12 - 15 Amp Draw

Electronic Price Changer	Aluminum
Paint / Color	SW Std. Black
Digit Size	48"
Color	Red / Green
Message Content	"UNLEADED" - "DIESEL"
Message Frequency	Alternates Every 3 Seconds
Electrical Requirements	30 Amp - 120 Volt

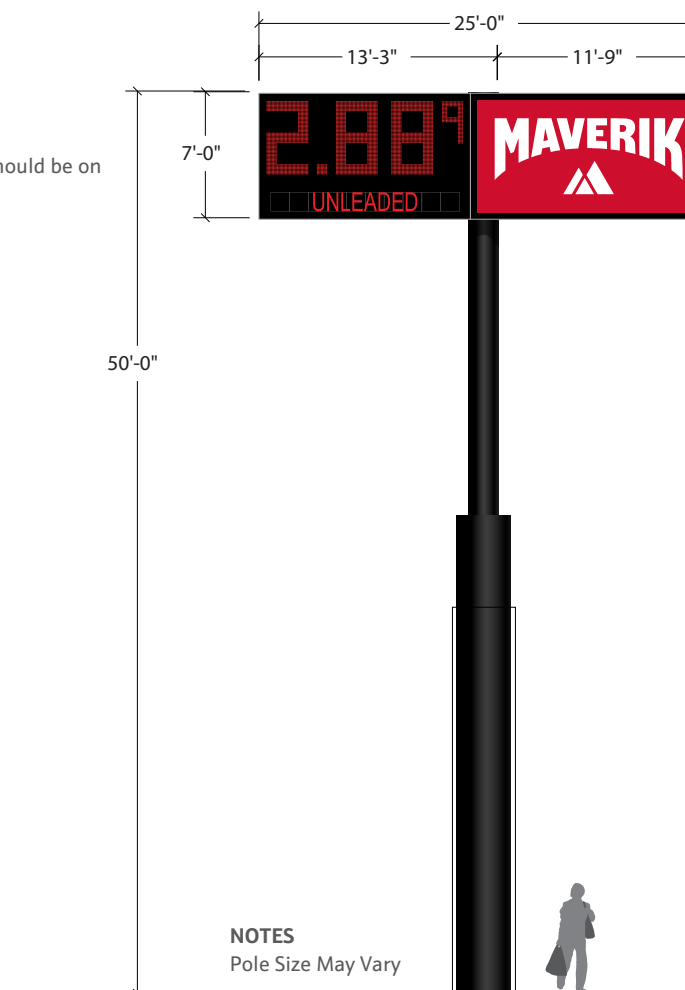


Skyline price sign: two (2) single face 2'-10" x 10'-7 1/2" x 8" deep cabinets.
E-85 / DEF panels 1' x 4'-2" x 1 1/2" aluminum pans,

SIGN 2

EXISTING SIGN TO BE REMOVED
SCALE:
1/4" - 1'

NOTES
Price changers should be on the freeway side.



NOTES
Pole Size May Vary

SIGN 2

PROPOSED 50' POLE SIGN
SCALE:
3/32" - 1'

ACCOUNT EXEC:
Pete Webb

DESIGNER:
W.T.S.

DATE OF ORIGINAL DWG:
8/19/24

REVISION HISTORY:

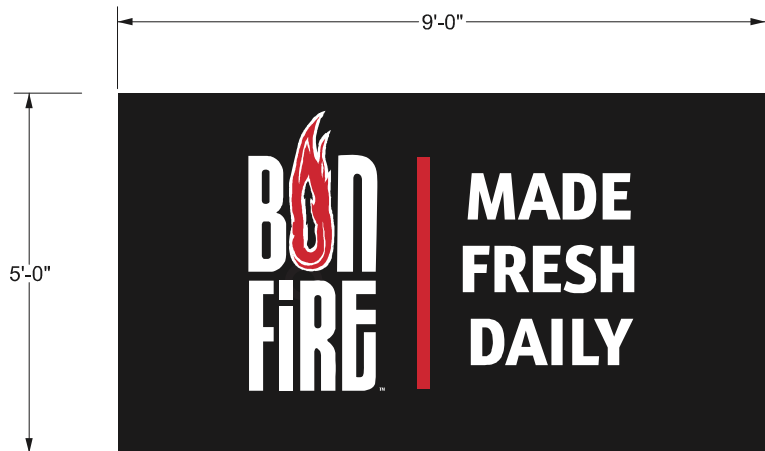
SIGN TYPE/DESCRIPTION:
10' Monument



SIGN 3A

SCALE: 3/8" = 1'

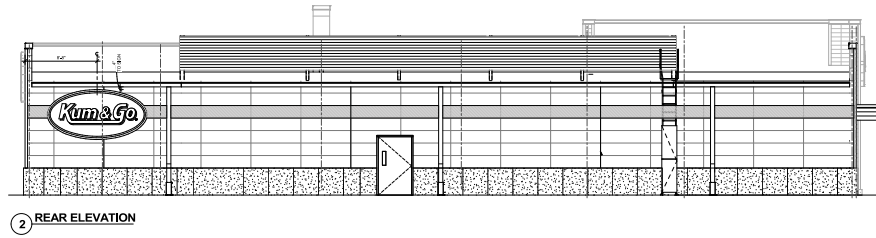
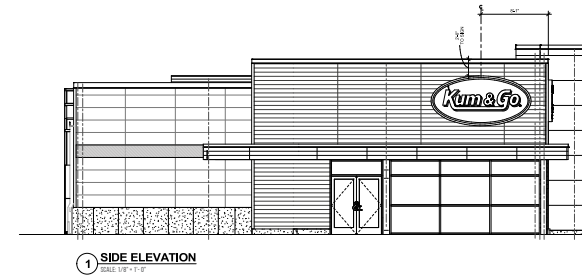
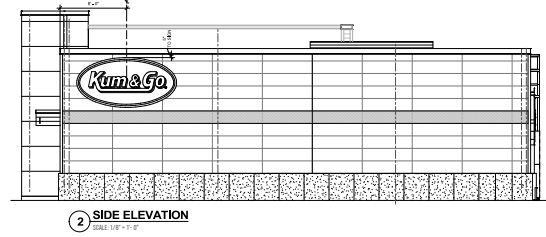
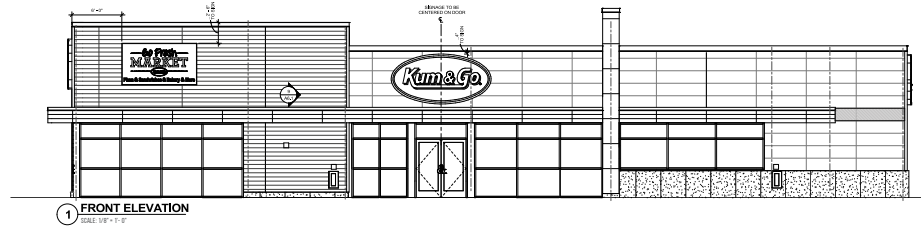
Replacement
Pre Finished Black Aluminum Sign Cabinet with hang bar and 2-1/2" Retainers.
3/16" White Lexan Face with 3M 3630-33 Red Vinyl Overlay.
Internally Illuminated Using White LEDs.



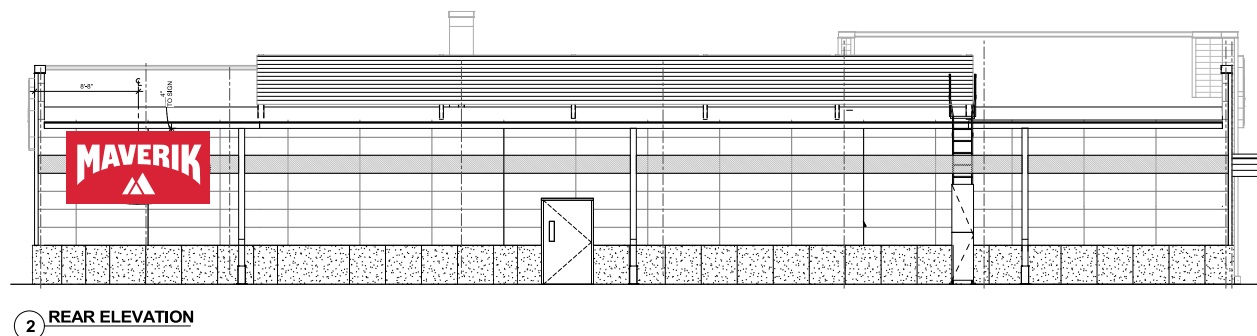
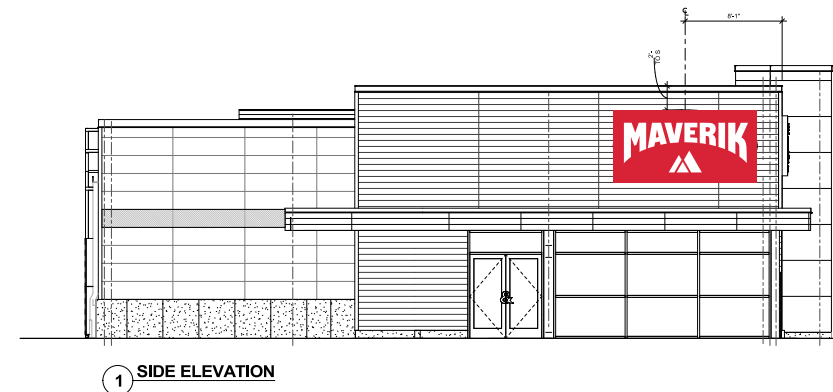
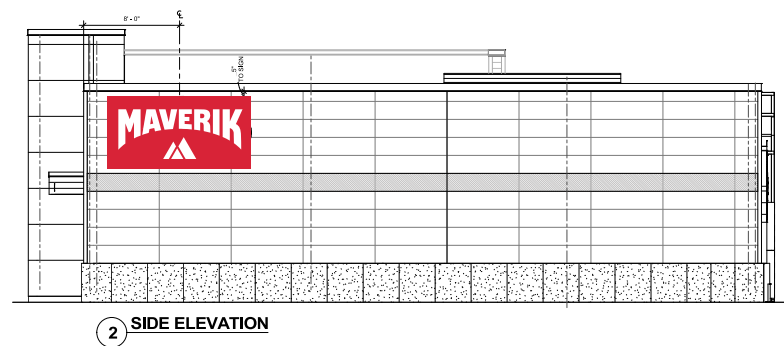
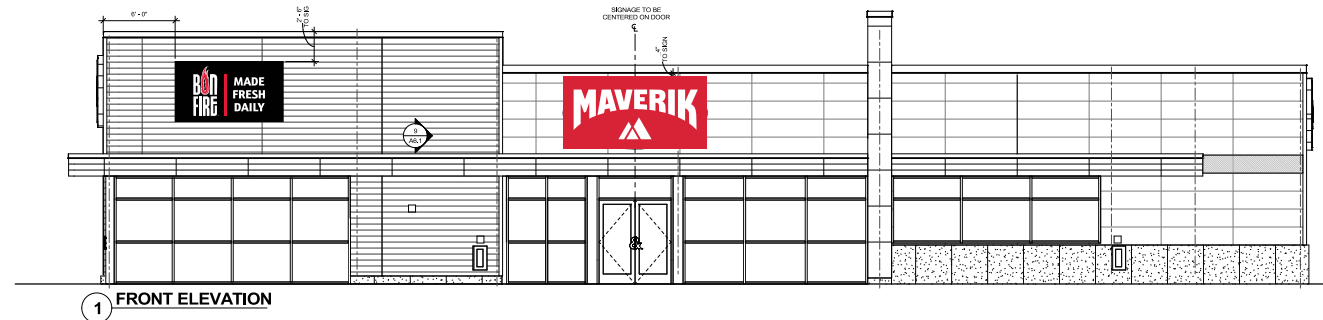
SIGN 4

Replacement
Flex Faces to Fit Existing
Bleed Face Frame.

SCALE: 3/8" = 1'



EXISTING
SCALE: NTS



PROPOSED
SCALE: 1/16" = 1'

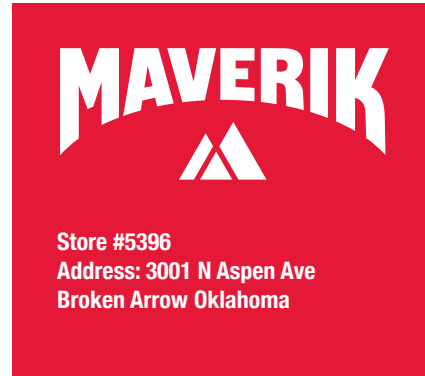


1225 NORTH LANSING AVENUE
TULSA, OKLAHOMA 74106
PH: 918.587.7171
FAX: 918.587.7176
WEB: CNFSIGNS.COM

APPROVED AS SHOWN APPROVED AS NOTED

X
CLIENT NAME _____ DATE _____

HEREBY GIVE MY APPROVAL TO PROCEED WITH FABRICATION OF THE SIGNAGE DEPICTED IN THESE DRAWINGS IN ORDER TO MEET THE PROJECT DEADLINE IN A TIMELY FASHION. I UNDERSTAND THAT ANY CHANGES (ADDITIONS, DELETIONS, OR MODIFICATIONS) TO THE FUNDAMENTAL STRUCTURE, UNDERLYING DESIGN, OR THE SPECIFIC FEATURES OF THIS SIGNAGE MAY RESULT IN SLIPPAGE OF THE COMPLETION DATE, ADDITIONAL RESOURCE REQUIREMENTS OR ADDITIONAL COST.



ACCOUNT EXEC:
Pete Webb

DESIGNER:
W.R.S.

DATE OF ORIGINAL DWG:
8/19/24

REVISION HISTORY:

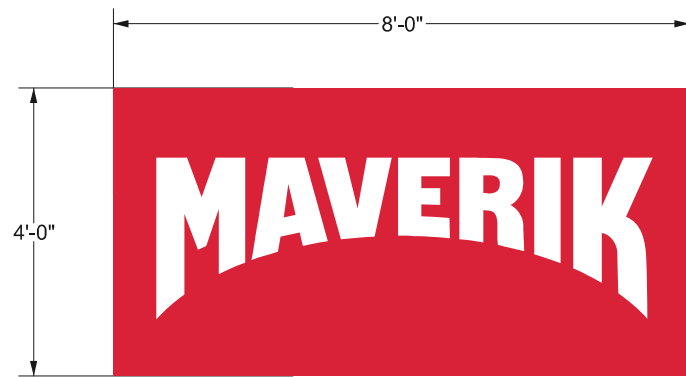
SIGN TYPE/DESCRIPTION:
Building Elevations

SHEET NAME: **ST-3.0**

APPROVED AS SHOWN APPROVED AS NOTED

X
CLIENT NAME _____ DATE _____

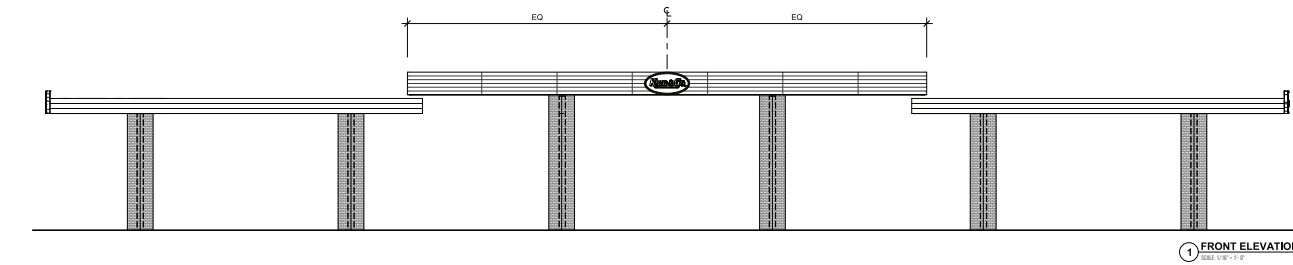
HEREBY GIVE MY APPROVAL TO PROCEED WITH FABRICATION OF THE SIGNAGE DEPICTED IN THESE DRAWINGS IN ORDER TO MEET THE PROJECT DEADLINE IN A TIMELY FASHION. I UNDERSTAND THAT ANY CHANGES (ADDITIONS, DELETIONS, OR MODIFICATIONS) TO THE FUNDAMENTAL STRUCTURE, UNDERLYING DESIGN, OR THE SPECIFIC FEATURES OF THIS SIGNAGE MAY RESULT IN SLIPPAGE OF THE COMPLETION DATE, ADDITIONAL RESOURCE REQUIREMENTS OR ADDITIONAL COST.



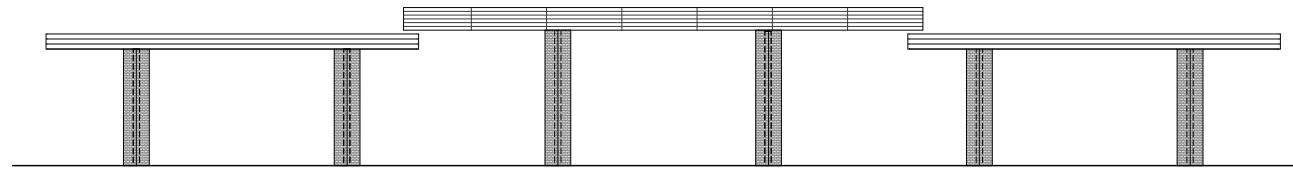
SIGN 5A

SCALE: 3/8" = 1'

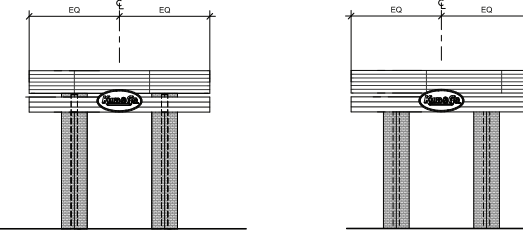
Replacement
Pre Finished Black Aluminum Sign Cabinet with hang bar and 2-1/2" Retainers.
3/16" White Lexan Face with 3M 3630-33 Red Vinyl Overlay.
Internally Illuminated Using White LEDs.



1 FRONT ELEVATION
SCALE: 3/8" = 1'



3 REAR ELEVATION
SCALE: 3/8" = 1'



EXISTING - SCALE: NTS 2 SIDE ELEVATION

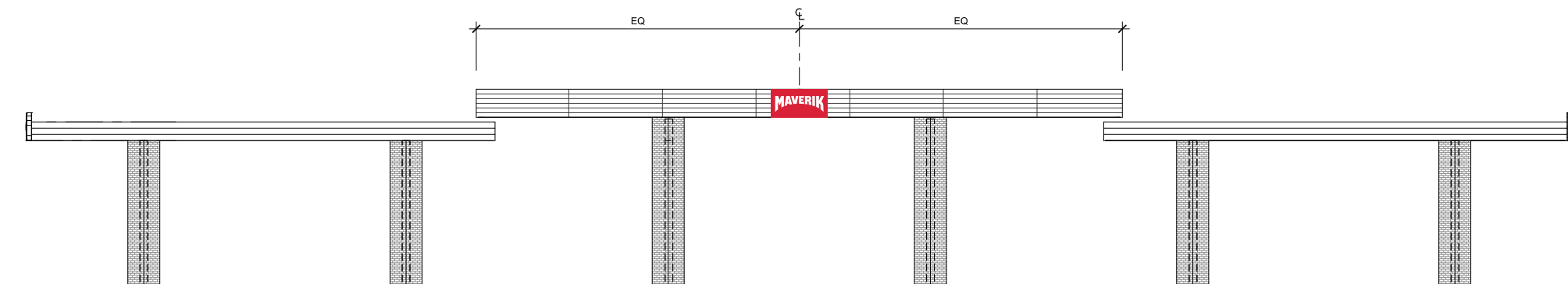
4 SIDE ELEVATION



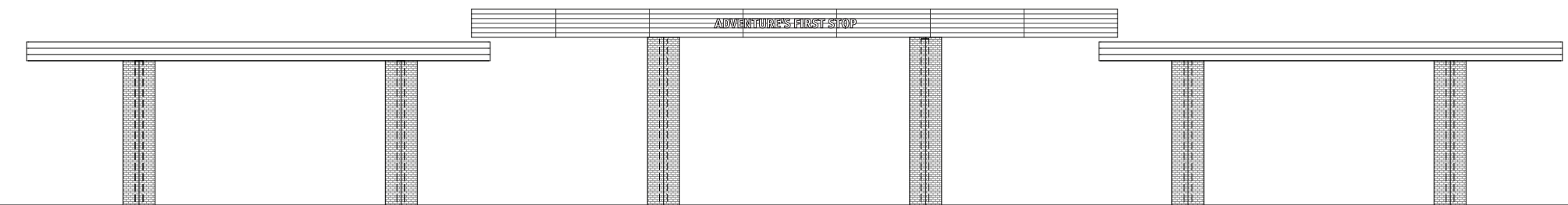
SIGN 6

SCALE: 3/8" = 1'

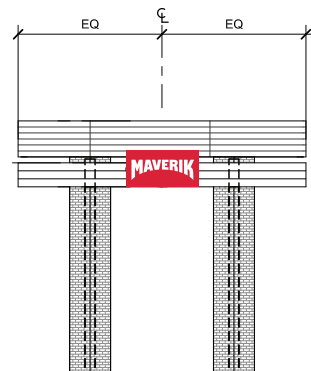
12" Tall Flat Cut Out 1/4" Aluminum Letters
Painted White
Stud Mounted



1 FRONT ELEVATION
SCALE: 1/16" = 1'-0"

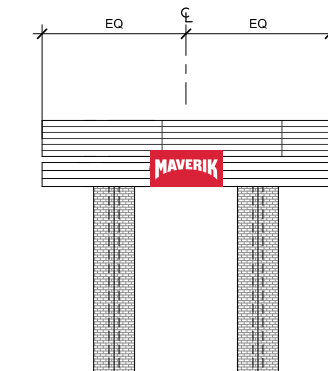


3 REAR ELEVATION
SCALE: 1/16" = 1'-0"



PROPOSED - SCALE: 1/16" = 1'

2 SIDE ELEVATION



4 SIDE ELEVATION



ACCOUNT EXEC:
Pete Webb

DESIGNER:
W.R.S.

DATE OF ORIGINAL DWG:
8/19/24

REVISION HISTORY:

SIGN TYPE/DESCRIPTION:
Canopy Sign