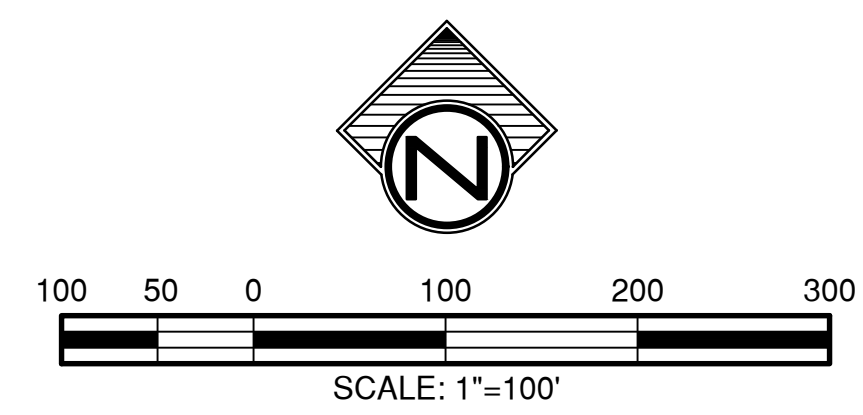
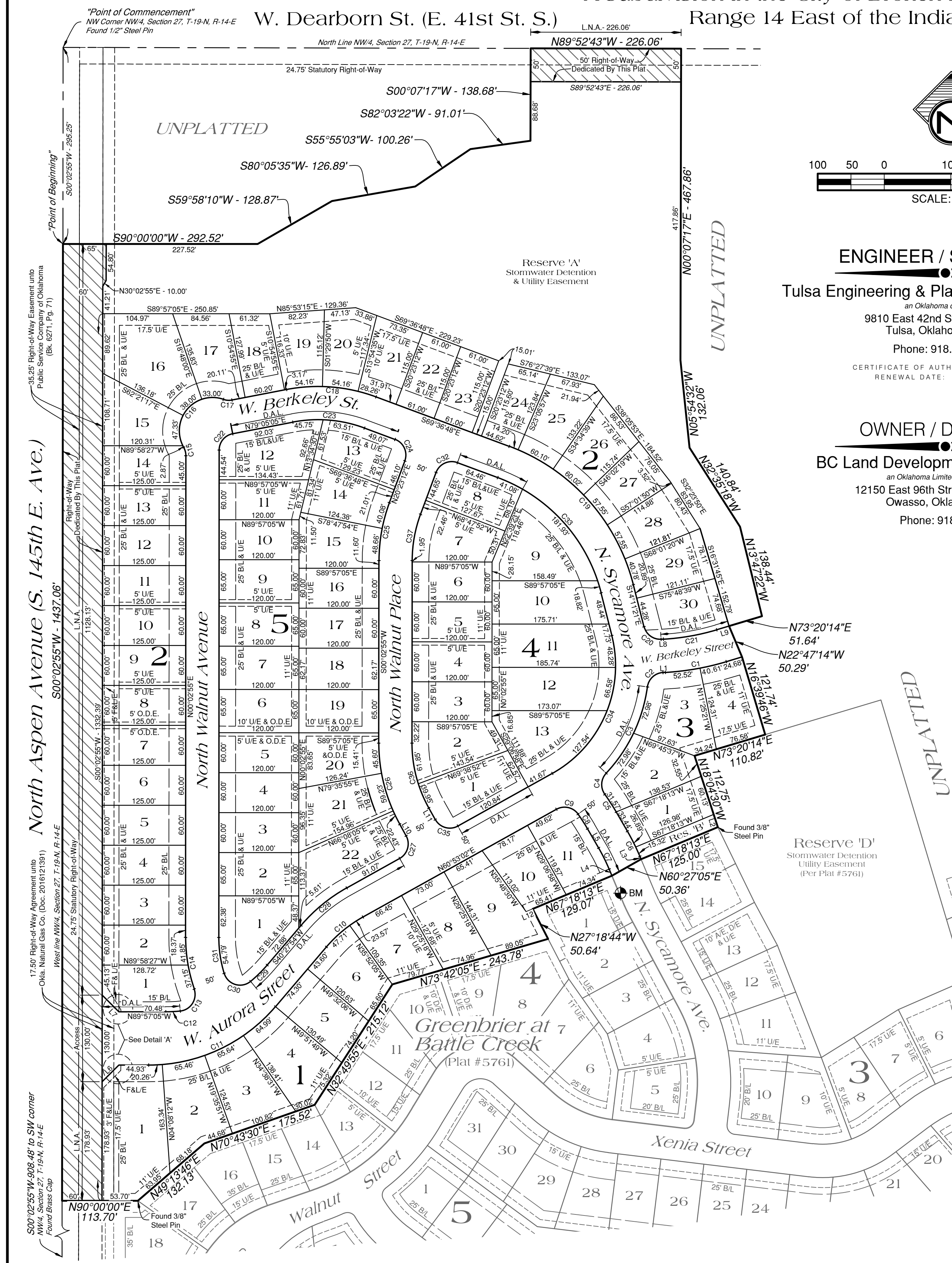


Honey Springs at Battle Creek I

PUD 94W

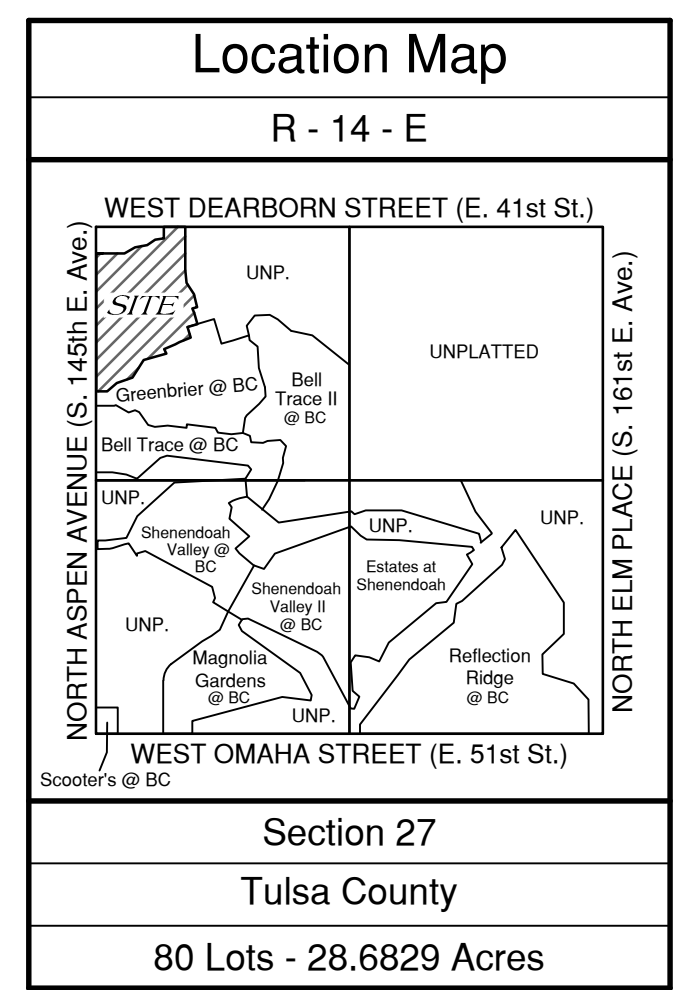
A subdivision in the City of Broken Arrow, being a part of the NW/4 of Section 27, Township 19 North, Range 14 East of the Indian Base and Meridian, Tulsa County, State of Oklahoma

CERTIFICATE
TULSA COUNTY TREASURER



ENGINEER / SURVEYOR
Tulsa Engineering & Planning Associates, Inc.
 an Oklahoma corporation
 9810 East 42nd Street, Suite 100
 Tulsa, Oklahoma 74146
 Phone: 918.252.9621
 CERTIFICATE OF AUTHORIZATION NO. 531
 RENEWAL DATE: JUNE 30, 2025

OWNER / DEVELOPER
BC Land Development Company, LLC
 an Oklahoma Limited Liability Company
 12150 East 96th Street North, Suite 202
 Owasso, Oklahoma 74055
 Phone: 918.376.6536



BLOCK 1		BLOCK 2		BLOCK 3		BLOCK 4		BLOCK 5	
Lot	Address	Lot	Address	Lot	Address	Lot	Address	Lot	Address
1	2109	1	4893	1	4903/2006	1	5011	1	5015/5024
2	2105	2	4901	2	4907	2	5017	2	5019
3	2101	3	4905	3	4911	3	5013	3	5017
4	2067	4	4901	4	4915	4	5009	4	5013
5	2063	5	4905	5	4919	5	5005	5	5009
6	2059	6	4909	6	4923	6	5001	6	5005
7	2055	7	4913	7	4927	7	5003	7	5007
8	2051	8	4917	8	4931	8	5001	8	5005
9	2009	9	4921	9	4925	9	5003	9	5007
10	2005	10	4925	10	4929	10	5001	10	5005
11	2001/4894	11	4929	11	4933	11	5003	11	5007
12	4904	12	4933	12	4937	12	5001	12	5005
13	4898	13	4937	13	4941	13	5003	13	5007
14	4912	14	4941	14	4945	14	5001	14	5005
15	4916	15	4945	15	4949	15	5003	15	5007
16	4920	16	4949	16	4953	16	5001	16	5005
17	4924	17	4953	17	4957	17	5003	17	5007
18	4928	18	4957	18	4961	18	5001	18	5005
19	4932	19	4961	19	4965	19	5003	19	5007
20	5002	20	4965	20	4969	20	5001	20	5005
21	5006	21	4969	21	4973	21	5003	21	5007
22	5010	22	4973	22	4977	22	5001	22	5005
23	5014	23	4977	23	4981	23	5003	23	5007
24	5018	24	4981	24	4985	24	5001	24	5005
25	5022	25	4985	25	4989	25	5003	25	5007
26	5026	26	4989	26	4993	26	5001	26	5005
27	5030	27	4993	27	4997	27	5003	27	5007
28	5034	28	4997	28	5001	28	5001	28	5005
29	5038	29	5001	29	5005	29	5003	29	5007
30	5042	30	5005	30	5009	30	5001	30	5005
31	5046	31	5009	31	5013	31	5003	31	5007
32	5050	32	5013	32	5017	32	5001	32	5005
33	5054	33	5017	33	5021	33	5003	33	5007
34	5058	34	5021	34	5025	34	5001	34	5005
35	5062	35	5025	35	5029	35	5003	35	5007
36	5066	36	5029	36	5033	36	5001	36	5005
37	5070	37	5033	37	5037	37	5003	37	5007
38	5074	38	5037	38	5041	38	5001	38	5005
39	5078	39	5041	39	5045	39	5003	39	5007
40	5082	40	5045	40	5049	40	5001	40	5005
41	5086	41	5049	41	5053	41	5003	41	5007
42	5090	42	5053	42	5057	42	5001	42	5005
43	5094	43	5057	43	5061	43	5003	43	5007
44	5098	44	5061	44	5065	44	5001	44	5005
45	5102	45	5065	45	5069	45	5003	45	5007
46	5106	46	5069	46	5073	46	5001	46	5005
47	5110	47	5073	47	5077	47	5003	47	5007
48	5114	48	5077	48	5081	48	5001	48	5005
49	5118	49	5081	49	5085	49	5003	49	5007
50	5122	50	5085	50	5089	50	5001	50	5005
51	5126	51	5089	51	5093	51	5003	51	5007
52	5130	52	5093	52	5097	52	5001	52	5005
53	5134	53	5097	53	5101	53	5003	53	5007
54	5138	54	5101	54	5105	54	5001	54	5005
55	5142	55	5105	55	5109	55	5003	55	5007
56	5146	56	5109	56	5113	56	5001	56	5005
57	5150	57	5113	57	5117	57	5003	57	5007
58	5154	58	5117	58	5121	58	5001	58	5005
59	5158	59	5121	59	5125	59	5003	59	5007
60	5162	60	5125	60	5129	60	5001	60	5005
61	5166	61	5129	61	5133	61	5003	61	5007
62	5170	62	5133	62	5137	62	5001	62	5005
63	5174	63	5137	63	5141	63	5003	63	5007
64	5178	64	5141	64	5145	64	5001	64	5005
65	5182	65	5145	65	5149	65	5003	65	5007
66	5186	66	5149	66	5153	66	5001	66	5005
67	5190	67	5153	67	5157	67	5003	67	5007
68	5194	68	5157	68	5161	68	5001	68	5005
69	5198	69	5161	69	5165	69	5003	69	5007
70	5202	70	5165	70	5169	70	5001	70	5005
71	5206	71	5169	71	5173	71	5003	71	5007
72	5210	72	5173	72	5177	72	5001	72	5005
73	5214	73	5177	73	5181	73	5003	73	5007
74	5218	74	5181	74	5185	74	5001	74	5005
75	5222	75	5185	75	5189	75	5003	75	5007
76	5226	76	5189	76	5193	76	5001	76	5005
77	5230	77	5193	77	5197	77	5003	77	5007
78	5234	78	5197	78	5201	78	5001	78	5005
79	5238	79	5201	79	5205	79	5003	79	5007
80	5242	80	5205	80	5209	80	5001	80	5005
81	5246	81	5209	81	5213	81	5003	81	5007
82	5250	82	5213	82	5217	82	5001	82	5005
83	5254	83	5217	83	5221	83	5003	83	5007
84	5258	84	5221	84	5225	84	5001	84	5005
85	5262	85	5225	85	5229	85	5003	85	5007
86	5266	86	5229	86	5233	86	5001	86	5005
87	5270	87	5233	87	5237	87	5003	87	5007
88	5274	88	5237	88	5241	88	5001	88	5005
89	5278	89	5241	89	5245	89	5003	89	5007
90	5282	90	5245	90	5249	90	5001	90	5005
91	5286	91	5249	91	5253	91	5003	91	5007
92	5290	92	5253	92	5257	92	5001	92	5005
93	5294	93	5257	93	5261	93	5003	93	5007
94	5298	94	5261	94	5265	94	5001	94	5005
95	5302	95	5265	95	5269	95	5003	95	5007
96	5306	96	5269	96	5273	96	5001	96	5005
97	5310	97	5273	97	5277	97	5003	97	5007
98	5314	98	5277	98	5281	98	5001	98	5005
99	5318	99	5281	99	5285	99	5003	99	5007
100	5322	100	5285	100	5289	100	5001	100	5005
101	5326	101	5289	101	5293	101	5003	101	5007
102	5330	102	5293	102	5297	102	5001	102	5005
103	5334	103	5297	103	5301	103	5003	103	5007
104	5338	104	5301	104	5305	104	5001	104	5005
105	5342	105	5305	105	5309	105	5003	105	5007
106	5346	106	5309	106	5313	106	5001	106	5005
107	5350	107	5313	107	5317	107	5003	107	5007
108	5354	108	5317	108	5321	108	5001	108	5005
109	5358	109	5321	109	5325	109	5003	109	5007
110	5362	110	5325	110	5329	110	5001	110	5005
111	5366	111	5329	111	5333	111	5003	111	5007
112	5370	112	5333	112	5337	112	5001	112	5005
113	5374	113	5337	113	5341	113	5003	113	5007
114	5378	114	5341	114	5345	114	5001	114	5005
115	5382	115	5345	115	5349	115	5003	115	5007
116	5386	116	5349	116	5353	116	5001	116	5005
117	5390	117	5353	117	5357	117	5003	117	5007
118	5394	118	5357	118	5361	118	5001	118	5005
119	5398	119	5361	119	5365	119	5003	119	5007
120	5402	120	5365	120	5369	120	5001	120	5005
121	5406	121	5369	121	5373	121	5003	121	5007
122	5410	122	5373	122	5377	122	5001	122	5005
123	5414	123	5377	123	5381	123	5003	123	5007
124	5418	124	5381	124	5385	124	5001	124	5005
125	5422	125	5385	125	5389	125	5003	125	5007
126	5426	126	5389	126	5393	126	5001	126	5005
127	5430	127	5393	127	5397	127	5003	127	5007
128	5434	128	5397	128	5401	128	5001	128	5005
129	5438	129	5401	129	5405	129	5003	129	5007
130	5442	130	5405	130	5409	130	5001	130	5005
131	5446	131	5409	131	5413	131	5003	131	5007
132	5450	132	5413	132	5417	132	5001	132	5005</

Honey Springs at Battle Creek I

DEED OF DEDICATION AND RESTRICTIVE COVENANTS PUD No. 94W

KNOW CERTAIN PERSONS BY THESE PRESENTS:

That BC Land Development Company, L.L.C., an Oklahoma limited liability company, hereinafter referred to as the "Owner/Developer", is the owner of the following described land:

A tract of land located within the Northwest Quarter (NW/4) of Section Twenty-Seven (27), Township Nineteen (19) North, Range Fourteen (14) East of the Indian Base and Meridian, Tulsa County, State of Oklahoma, according to the U.S. Government Survey thereof, being more particularly described as follows:

Commencing at the NW corner of said NW/4;

Thence S 00°02'55" W, along the west line of said NW/4, a distance of 295.25 feet to the "Point of Beginning";

Thence continuing S 00°02'55" W, along the west line of said NW/4, a distance of 1437.06 feet to the northwest corner of GREENBRIER, an addition to the City of Broken Arrow, Tulsa County, State of Oklahoma, according to recorded Plat No. 5761, as filed in the office of the Tulsa County Clerk;

Thence N 90°00'00" E, along the northerly boundary of said GREENBRIER addition (until otherwise noted), a distance of 113.70 feet;

Thence N 49°13'46" E a distance of 132.13 feet;

Thence N 70°43'30" E a distance of 175.52 feet;

Thence N 32°49'55" E a distance of 215.12 feet;

Thence N 73°42'05" E a distance of 243.78 feet;

Thence N 27°18'44" W a distance of 50.64 feet;

Thence N 67°18'13" E a distance of 129.07 feet;

Thence N 60°27'05" E a distance of 50.36 feet;

Thence N 67°18'13" E a distance of 125.00 feet;

Thence N 18°04'30" W a distance of 112.75 feet;

Thence N 73°20'14" E a distance of 110.82 feet;

Thence leaving said northerly boundary of said GREENBRIER, N 16°39'46" W a distance of 121.74 feet;

Thence N 22°47'14" W a distance of 50.29 feet;

Thence N 73°20'14" E a distance of 51.64 feet;

Thence N 13°47'22" W a distance of 138.44 feet;

Thence N 32°35'18" W a distance of 140.84 feet;

Thence N 05°54'32" W a distance of 132.06 feet;

Thence N 00°07'17" E a distance of 467.86 feet to a point on the north line of said Northwest Quarter (NW/4);

Thence N 89°52'43" W, along said north line, a distance of 226.06 feet;

Thence S 00°07'17" W a distance of 138.68 feet;

Thence S 82°03'22" W a distance of 91.01 feet;

Thence S 55°55'03" W a distance of 100.26 feet;

Thence S 80°05'35" W a distance of 126.89 feet;

Thence S 59°58'10" W a distance of 128.87 feet;

Thence S 90°00'00" W a distance of 292.52 feet to the "Point of Beginning".

Said tract contains 1,249,428 square feet or 28.6829 acres

The non-astronomical bearings contained herein are based upon the west line of GREENBRIER, an addition to the City of Broken Arrow, Tulsa County, State of Oklahoma, according to recorded Plat No. 5761, as filed in the office of the Tulsa County Clerk.

The Owner/Developer has caused the same to be engineered, surveyed, staked and platted into lots, blocks, streets, and reserve areas in conformity to the accompanying plat and survey thereof, which plat is made a part hereof (the "Plat"), and has caused the same to be named "Honey Springs at Battle Creek I", a subdivision in the City of Broken Arrow, Tulsa County, State of Oklahoma (the "Subdivision").

SECTION I. STREETS, EASEMENTS AND UTILITIES

1.1 Public Streets and General Utility Easements

The Owner/Developer does hereby dedicate for public use the streets as depicted on the accompanying plat; and does further dedicate for public use the utility easements as depicted on the accompanying plat as "Utility Easement" or "U/E", for the several purposes of constructing, maintaining, operating, repairing, replacing, and/or removing any and all public utilities, including storm sewers, sanitary sewers, telephone and communication lines, electric power lines and transformers, gas lines, water lines and cable television lines, together with all fittings, including the poles, wires, conduits, pipes, valves, meters and equipment for each of such facilities and any other appurtenances thereto, with the rights of ingress and egress to and upon the utility easements for the uses and purposes aforesaid, provided however, the Owner/Developer hereby reserves the right to construct, maintain, operate, lay and re-lay water lines and sewer lines, together with the right of ingress and egress for such construction, maintenance, operation, laying and re-laying over, across and along the public street and the utility easements depicted on the plat, for the purpose of furnishing water and/or sewer services to the area included in the plat. The Owner/Developer herein imposes a restrictive covenant, which covenant shall be binding on the Owner/Developer and shall be enforceable by the City of Broken Arrow, Oklahoma, and by the supplier of any affected utility service, that within the utility easements depicted on the accompanying plat no building, structure or other above or below ground obstruction shall be placed, erected, installed or maintained, provided however, nothing herein shall be deemed to prohibit drives, parking areas, fencing, curbing, irrigation and landscaping or other similar improvements that do not constitute an obstruction.

1.2 Underground Service

1.2.1 Overhead poles may be located along the west perimeter of the subdivision as necessary if located in utility easements for the purpose of the supply of underground service. Street light poles or standards may be served by underground cable, and except as provided in the immediately

preceding sentence, all electric and communication supply lines shall be located underground, in the easement-ways reserved for general utility services and streets, shown on the attached plat. The Owner/Developer does hereby restrict the utility easements shown and designated on the accompanying plat to a single supplier of electrical service.

1.2.2 All supply lines in the subdivision including electric, telephone, cable television and gas lines shall be located underground in the easements reserved for general utility services and streets shown on the plat of the subdivision. Service pedestals and transformers, as sources of supply at secondary voltages, may also be located in said easements.

1.2.3 Underground service cables and gas service lines to all structures which may be located on all lots in the subdivision may be run from the nearest gas main, service pedestal or transformer to the point of usage determined by the location and construction of such structure as may be located upon each said lot: provided that upon the installation of such a service cable or gas service line to a particular structure, the supplier of service shall thereafter be deemed to have a definitive, permanent, and effective right-of-way easement on said lot, covering a five-foot strip extending 2.5 feet on each side of such service cable or line, extending from the service pedestal, transformer or gas main to the service entrance on the structure or a point of metering.

1.2.4 The supplier of electric, telephone, cable television and gas services, through its authorized agents and employees, shall at all times have right of access to all such easements shown on the plat to the subdivision or provided for in this Deed of Dedication for the purpose of installing, maintaining, removing or replacing any portion of the underground electric, telephone, cable television or gas service facilities so installed by it. The supplier of electric, telephone and cable television also reserves the perpetual right, privilege and authority to cut down, trim, or treat any trees and undergrowth on said easement.

1.2.5 The owner of each lot in the subdivision shall be responsible for the protection of the underground facilities located on his property and shall prevent the alteration of grade or any construction activity which may interfere with said electric, telephone, cable television or gas facilities. The supplier of service will be responsible for ordinary maintenance of underground facilities, but the owner of each lot in the subdivision will pay for damage or relocation of such facilities caused or necessitated by acts of such owner or his agents or contractors. The foregoing covenants concerning underground facilities shall be enforceable by the supplier of electric, telephone, cable television or gas service.

1.3 Water and Sewer Service

1.3.1 The owner of the lot shall be responsible for the protection of the public water and sewer mains located on his lot.

1.3.2 Within the depicted utility easement area, if the ground elevations are materially altered from the contours existing upon the completion of the installation of a public water or sewer main, all ground level apertures, to include: valve boxes, fire

hydrants and manholes will be adjusted to the new grade by the owner or at the owner's expense.

1.3.3 The City of Broken Arrow, Oklahoma, or its successors, shall be responsible for ordinary maintenance of public water and sewer mains, but the owner shall pay for damage or relocation of such facilities caused or necessitated by acts of the owner, his agents or contractors.

1.3.4 The City of Broken Arrow, Oklahoma, or its successors, shall at all times have right of access to all easement ways depicted on the accompanying plat, or otherwise provided for in this Deed of Dedication, for the purpose of installing, maintaining, removing or replacing any portion of underground water or sewer facilities.

1.3.5 The foregoing covenants set forth in this subsection 1.3 shall be enforceable by the City of Broken Arrow, Oklahoma, or its successors, and the owner of the lot agrees to be bound hereby.

1.4 Surface Drainage

Each lot on the Plat shall receive and drain, in an unobstructed manner, the storm and surface waters from drainage areas of higher elevation and from public streets and easements. Each lot owner, by taking title to a lot, shall be deemed to understand and agree that stormwater from other lots will flow across his/her lot and the lot owner shall not construct or permit to be constructed any fencing or other obstructions which would impair the drainage of storm and surface waters over and across the lot. The Owner/Developer expressly reserves the right to enter upon each lot for the purpose of resolving or curing drainage issues related to adjacent or nearby lots, including the trimming of trees, shrubs or turf, and the removal of fencing, as necessary. The foregoing covenants set forth in this paragraph 1.4 shall be enforceable by any affected lot owner and by the City of Broken Arrow, Oklahoma.

1.5 Limits of No Access

The undersigned Owner/Developer hereby relinquishes rights of vehicular ingress or egress from any portion of the property adjacent to North Aspen Avenue and West Dearborn Street within the bounds designated as "Limits of No Access" (L.N.A.) on the Plat, which "Limits of No Access" may be amended or released by the Broken Arrow Planning Commission, or its successor, and with the approval of the City of Broken Arrow, Oklahoma, or as otherwise provided by the statutes and laws of the State of Oklahoma pertaining thereto, and the limits of no access above established shall be enforceable by the City of Broken Arrow, Oklahoma.

1.6 Fence and Landscape Easements

The Owner/Developer herein establishes and reserves for subsequent conveyance to the Honey Springs at Battle Creek Homeowners' Association, Inc., formed pursuant to SECTION III - HOMEOWNERS' ASSOCIATION, a perpetual non-exclusive easement to erect and maintain fencing, walls, landscaping, and/or irrigation along the West property boundary of the subdivision within the Fence and Landscape Easement depicted on the accompanying plat. Fencing and walls shall meet the requirements of Section 5.2.E of the City of Broken Arrow, Oklahoma Zoning Ordinance.

1.7 Fence, Landscape, and Paving Repair

The owner of each lot shall be responsible for the repair and replacement of any fencing, landscaping, and paving located within the utility easements in the event it is necessary to repair any underground water, sanitary sewer mains, storm sewers, electric, natural gas, telephone, or cable television service. No lot owner shall place any fencing, landscaping, or plant any trees or shrubbery in dedicated utility easements or rights-of-ways which would potentially endanger, threaten, or harm any utilities located within said easements or rights-of-ways. If it is determined that any fencing, landscaping, trees or shrubbery located within said easements or rights-of-way are damaging or endangering utilities in said easements or rights-of-way, the City of Broken Arrow and or respective utility provider shall have the right to remove said fencing, landscaping, trees or shrubbery upon five (5) days' notice at the lot owner's expense, or within such time the lot owner may remove the same.

1.8 Homeowners' Association

As part of the development of the Subdivision, the Owner/Developer thereof has created or will create as per the Subdivision Regulations for the City of Broken Arrow the "Honey Springs at Battle Creek Homeowners' Association, L.L.C.", an Oklahoma not-for-profit, as set forth in the Restrictive Covenants, Conditions, and Restrictions for "Honey Springs at Battle Creek I". There is to be one Homeowners' Association, for Honey Springs at Battle Creek, even though the property may be platted in phases.

1.9 Reserve Areas

Reserve areas shall be used for open space, signage, landscaping, walls, fencing, drainage, overland drainage, stormwater detention, utilities, parking and ingress and egress and is reserved for subsequent conveyance to the Homeowners' Association to be comprised of the owners of the residential lots within "Honey Springs at Battle Creek I" as set forth within SECTION III - HOMEOWNERS' ASSOCIATION hereof. All costs and expenses associated with all reserves, including maintenance of various improvements will be the responsibility of the property owner.

1.10 Retaining Walls

A retaining wall is a structural wall measuring over 4 feet in height from the top of the leveling course to the top of the wall. Retaining walls will need to be designed by a licensed structural engineer and submitted for review and permitting to the City.

1.11 Restrictive Covenants

Additional covenants and restrictions for "Honey Springs at Battle Creek I" are filed, as a separate instrument, in the Tulsa County Clerk's office.

Honey Springs at Battle Creek I

Date of Preparation: November 25, 2024

Sheet 2 of 3

SECTION II. PLANNED UNIT DEVELOPMENT

WHEREAS, "HONEY SPRINGS AT BATTLE CREEK I" was submitted as a planned unit development (entitled PUD No. 94W) as provided within Section 6.4 of the Zoning Ordinance of the City of Broken Arrow, Oklahoma (Ordinance No. 2931) as amended and existing on December 1, 2020 (hereinafter the "Broken Arrow Zoning Ordinance"), which PUD No. 94W was approved by the Broken Arrow Planning Commission on November 5, 2020 and approved by the City of Broken Arrow City Council, on December 1, 2020; and WHEREAS, the planned unit development provisions of the Broken Arrow Zoning Ordinance require the establishment of covenants of record, inuring to and enforceable by the City of Broken Arrow, Oklahoma, sufficient to assure the implementation and continued compliance with the approved planned unit development; and

WHEREAS, the Owner/Developer desires to establish restrictions for the purpose of providing for an orderly development and to ensure adequate restrictions for the mutual benefit of the Owner/Developer, its successors and assigns, and the City of Broken Arrow, Oklahoma;

THEREFORE, the Owner/Developer does hereby impose the following restrictions and covenants which shall be covenants running with the land and shall be binding upon the Owner/Developer, its successors and assigns, and shall be enforceable as hereinafter set forth:

2.1 Development Standards – (Blocks 1-5):

- 2.1.1 Permitted Uses: Executive Homesites (single family dwellings as permitted in an R-2 District as existing on 1.31.08)
- 2.1.2 Maximum Number of Dwelling Units 175
- 2.1.3 Maximum Density 3.50 DUs/Acres
- 2.1.4 Minimum Lot Size 7,000 sq. ft.
- 2.1.5 Maximum Building Height 2 stories (35 ft.)
- 2.1.6 Minimum Lot Frontage 60 ft. (at building line)*
- 2.1.7 Minimum Lot Depth 110 ft.
- 2.1.8 Minimum Yard if Abutting Public/Private Street 20/25 ft. (private)
- 2.1.9 Side Yard Abutting Public Street 15 ft.**
- 2.1.10 Minimum Rear Yard 20 ft.
- 2.1.11 Minimum Side Yards 5/5 ft.
- 2.1.12 Minimum Yard Abutting Arterial Street 25 ft. (rear or side yard)

* All lots that back up to Block 4 of Greenbrier subdivision shall be a minimum of 65 feet in width at the building line.

** Garage openings shall be permitted on the Side Yard abutting a public street if the Side Yard setback is increased to 20 ft. Setbacks between building lines shall be offset no more than 10 feet.

2.2 Building Materials:

Private Covenants, Conditions & Restrictions (CCR's) shall be filed with Tulsa County concurrently with the Final Plat, which CCR's shall require and describe in detail that the first story exterior walls shall be of at least seventy five

percent (75%) masonry. Vinyl or aluminum siding of any exterior wall is prohibited.

2.3 Detention Easement:

A Detention Access Easement shall be provided adjacent to Lot 1, Block 3 over and across Reserve 'B'.

SECTION III. HOMEOWNERS' ASSOCIATION

3.1. Formation

The Owner/Developer has formed or shall be caused to be formed, an association of owners of lots within the subdivision, which shall be named "Honey Springs at Battle Creek Homeowners' Association, Inc.", a not for profit (the "Association") for the general purposes of the maintenance and ownership of the common areas and to enhance the desirability and attractiveness of the Subdivision. The Owner/Developer will control the Association until such time that it is turned over to the Homeowners' Association. Every record owner of a fee interest in a lot in the subdivision shall be a member of the Association and such membership shall be appurtenant to and may not be separated from ownership of a lot. The acceptance of a deed to a lot shall constitute acceptance of membership in the Association. All members of the Association covenant and agree to pay to the Association an annual assessment established by the Association which shall be no less than the minimum amount necessary to adequately maintain and support all common areas of interest, including, without limitation, all reserve areas, and common areas as designated on the plat provided, however, no assessment shall be made or attach to any lot owned by the Owner/Developer.

3.2. Maintenance

3.2.1 Reserve Areas: The owner of the property associated with the Reserve Areas, and the Fence and Landscape Easement located adjacent to North Aspen Avenue, shall be responsible for the maintenance of improvements and landscaping within all reserve areas designated on the plat and the reserve areas are reserved for subsequent conveyance to the Association.

3.2.2 Fence and Landscape Easement: The owner of the property associated with the Fence and Landscape Easements located adjacent to North Aspen Avenue, shall be responsible for the maintenance of improvements and landscaping within the Fence and Landscape Easement as designated on the plat.

SECTION IV. ENFORCEMENT, DURATION, AMENDMENT, AND SEVERABILITY

4.1. Enforcement

The restrictions herein set forth shall run with the land and shall be binding upon the Owner/Developer, its successors and assigns. Within the provisions of SECTION I. STREETS, EASEMENTS AND UTILITIES, are set forth certain covenants and the enforcement rights pertaining thereto, and whether or not therein so stated the covenants within Section I, shall inure to the benefit of and be enforceable by the City of Broken Arrow, Oklahoma.

4.2. Duration

These restrictions shall remain in full force and effect until 40 years from the date of filing this plat of record, and thereafter shall automatically be continued for successive periods of 10 years, unless terminated or amended as hereinafter provided.

4.3. Amendment

The covenants contained within SECTION I. STREETS, EASEMENTS AND UTILITIES, may be amended or terminated at any time by written instrument signed and acknowledged by the owners of the affected lot or parcel and by the Broken Arrow Planning Commission or its successors with the approval of the City of Broken Arrow, Oklahoma. All other covenants may be amended by the Owner/Developer unilaterally, in its sole discretion, for so long as the Owner/Developer owns a lot in the Subdivision or a later adjacent subdivision known as HONEY SPRINGS AT BATTLE CREEK II; and, thereafter, at any time by an instrument in writing signed by the owners of at least sixty percent (60%) of all lots in the Subdivision; providing, however, that until the Owner/Developer has sold all lots in the Subdivision, the Owner/Developer reserves the right to amend any of the covenants contained herein without the consent of the other owners if such amendment, in the sole opinion and discretion of the Owner/Developer, is necessary for the development and sale of the lots in the Subdivision. In this Section 4.3, the term "the Subdivision" shall explicitly mean the Plat of "Honey Springs at Battle Creek I".

4.4. Severability

Invalidation of any restriction set forth herein, or any part thereof, by an order, judgment, or decree of any court, or otherwise, shall not invalidate or affect any of the other restrictions of any part hereof as set forth herein, which shall remain in full force and effect.

4.5 Lot Owner's Responsibilities

The respective lot owner of each dwelling and said lot owner's builder shall be responsible for all structure design, geotechnical design, foundation design, grading, drainage, and all other structural aspects of the dwelling independent of the Owner/Developer and the Owner/Developer's engineer. The respective lot owner of each dwelling and the lot owner's builder shall be responsible for determining the proper finish floor elevation of the respective dwelling. The finished floor elevation shall be determined relative to, but not limited to: roadways, areas of higher elevations, borrow ditches, culvert pipes, elevation of adjacent lots, etc. It is the dwelling owner's responsibility to prepare the finished grade of each individual home site so as to ensure that storm water is properly managed around the perimeter of the subject home. Said lot owner and its builder shall construct the dwelling in accordance with the municipal, county and, state building codes that are customarily applicable in this region to such construction.

IN WITNESS WHEREOF, the undersigned Owner/Developer, has executed this instrument this ____ day of _____, 2025.

BC Land Development Company, L.L.C.
an Oklahoma limited liability company

By: David E. Charney, President of
Charney Properties, Inc., as Manager BC
Land Development Company, L.L.C.

State of Oklahoma)
) S.S.
County of Tulsa)

Subscribed and sworn before me, a Notary Public, this ____ day of _____, 2025, by David E. Charney, Manager of BC Land Development Company, L.L.C.

Notary Public

CERTIFICATE OF SURVEY

I, Bobby D. Long, of Tulsa Engineering & Planning Associates, Inc., a professional land surveyor registered in the State of Oklahoma, hereby certify that I have carefully and accurately surveyed, subdivided, and platted the tract of land described above, and that the accompanying plat designated herein as "Honey Springs at Battle Creek I", a subdivision in the City of Broken Arrow, Tulsa County, State of Oklahoma, is a representation of the survey made on the ground using generally accepted land surveying practices and meets or exceeds the Oklahoma Minimum Standards for the Practice of Land Surveying as adopted.

Executed this ____ day of _____, 2025.

Bobby D. Long
Registered Professional Land Surveyor
Oklahoma No. 1886

State of Oklahoma)
) S.S.
County of Tulsa)

The foregoing Certificate of Survey was acknowledged before me this ____ day of _____, 2025, by Bobby D. Long.

Jack Taber, Notary Public
My commission No. 12005192
My commission expires May 31, 2028