

417672

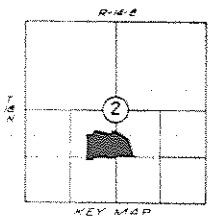
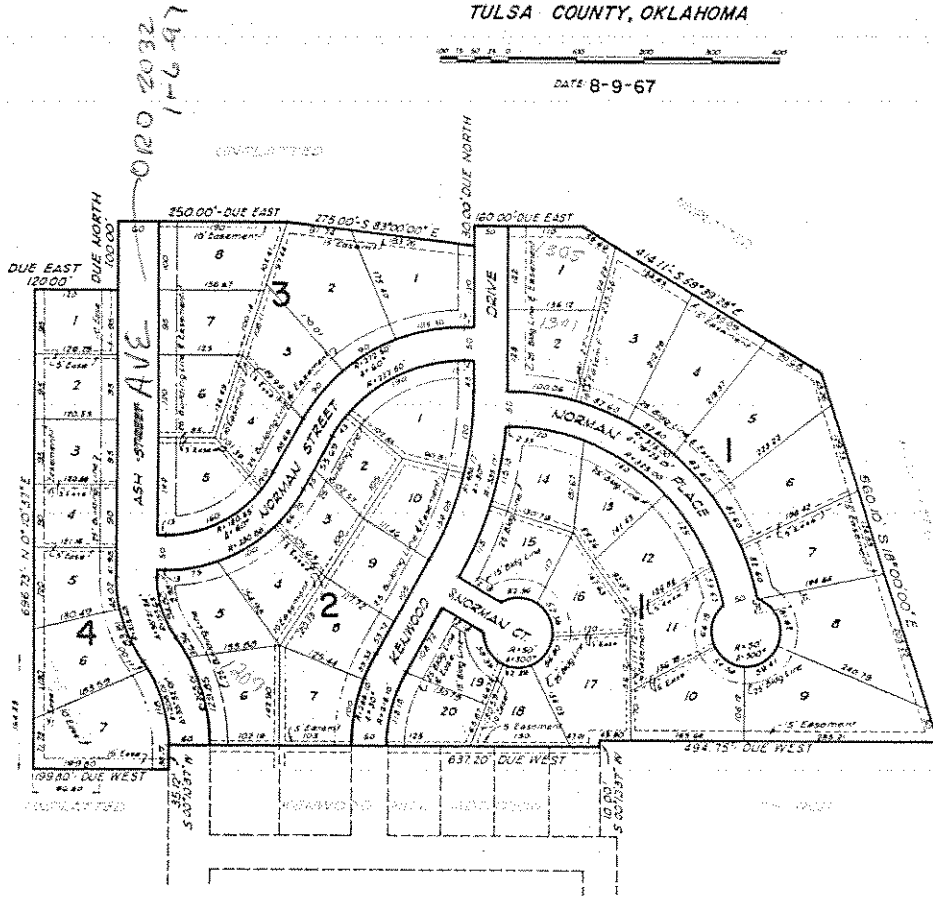
Plat 2892

KENWOOD HILLS SECOND ADDITION

A PART OF THE S 1/2 OF SECTION 2, T-18-N; R-14-E
TULSA COUNTY, OKLAHOMA



DATE 8-9-67



— ENGINEER —
COLPIT T. MIDDLETON & NICKLE
TULSA, OKLAHOMA

— DEVELOPER —
OAK CREST DEVELOPMENT CO.
BROKEN ARROW, OKLAHOMA

RECORDED IN OKLAHOMA
PLAT 2892
JUN 12 3 39 PM '68
TULSA COUNTY CLERK

"THE PLAT BOOK" - CITY OF TULSA & VICINITY
COMPILED FROM OFFICIAL RECORDS BY JIM PLUMMER & ROY MALENEE
CITY MAP SERVICE
5409 S QUINCY
COPYRIGHT 1968
PH. RI. 2 1018

PLAT NO. 2892